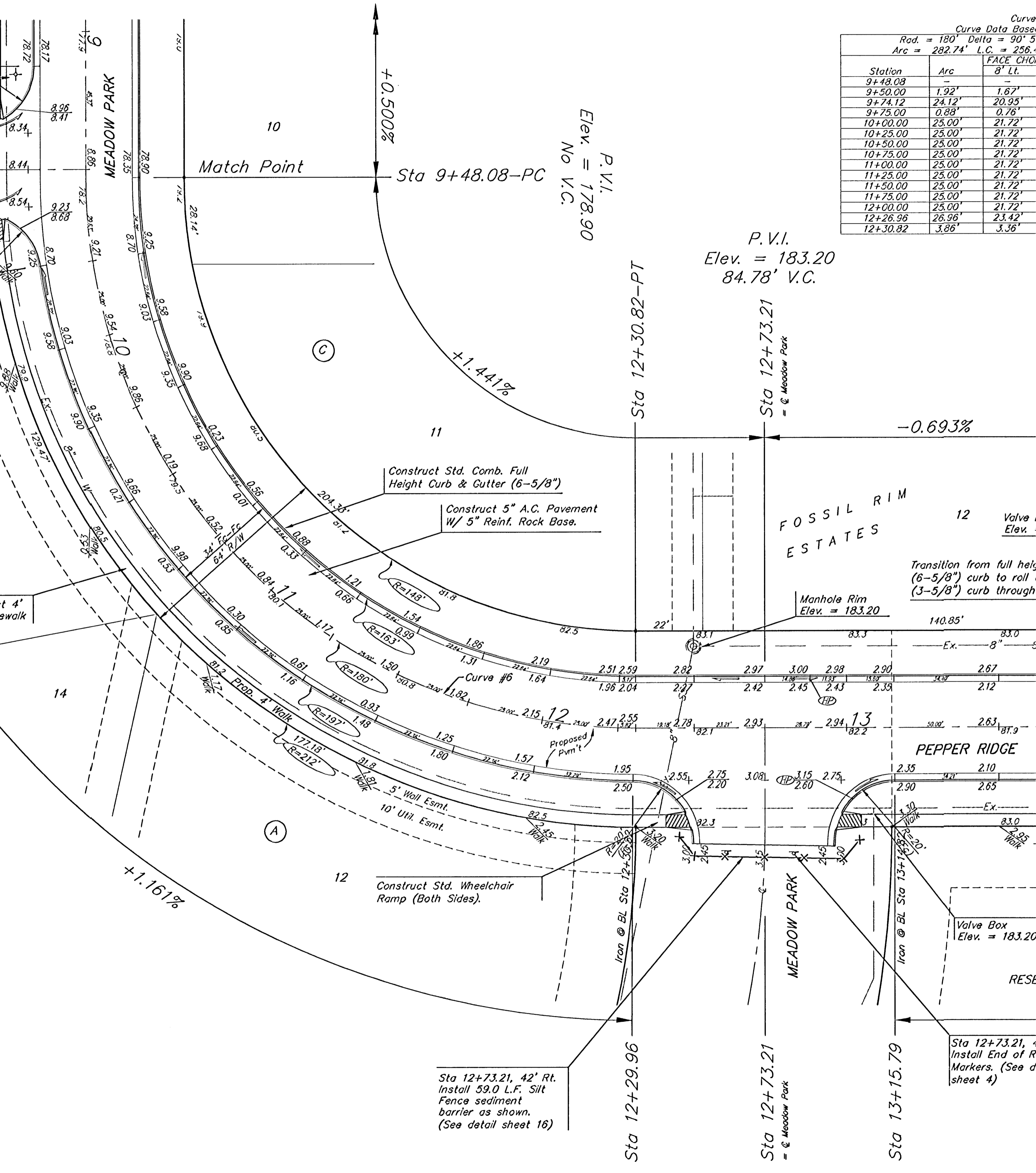


Curve Data Base  
 Rad. = 180' Delta = 90' 5"  
 Arc = 282.74' L.C. = 256.4'

Station	Arc	FACE CHO
9+48.08	-	-
9+50.00	1.92'	1.67'
9+74.12	24.12'	20.95'
9+75.00	0.88'	0.76'
10+00.00	25.00'	21.72'
10+25.00	25.00'	21.72'
10+50.00	25.00'	21.72'
10+75.00	25.00'	21.72'
11+00.00	25.00'	21.72'
11+25.00	25.00'	21.72'
11+50.00	25.00'	21.72'
11+75.00	25.00'	21.72'
12+00.00	25.00'	21.72'
12+26.96	26.96'	23.42'
12+30.82	3.86'	3.36'



Sta 12+73.21, 42' Rt.  
 Install 59.0 L.F. Silt  
 Fence sediment  
 barrier as shown.  
 (See detail sheet 16)

Sta 12+73.21, 4'  
 Install End of R  
 Markers. (See d  
 sheet 4)

Valve Box  
 Elev. = 183.20

Manhole Rim  
 Elev. = 183.20

Construct Std. Comb. Full  
 Height Curb & Gutter (6-5/8")

Construct 5" A.C. Pavement  
 W/ 5" Reinf. Rock Base.

Construct Std. Wheelchair  
 Ramp (Both Sides).

Transition from full height  
 (6-5/8") curb to roll  
 (3-5/8") curb through