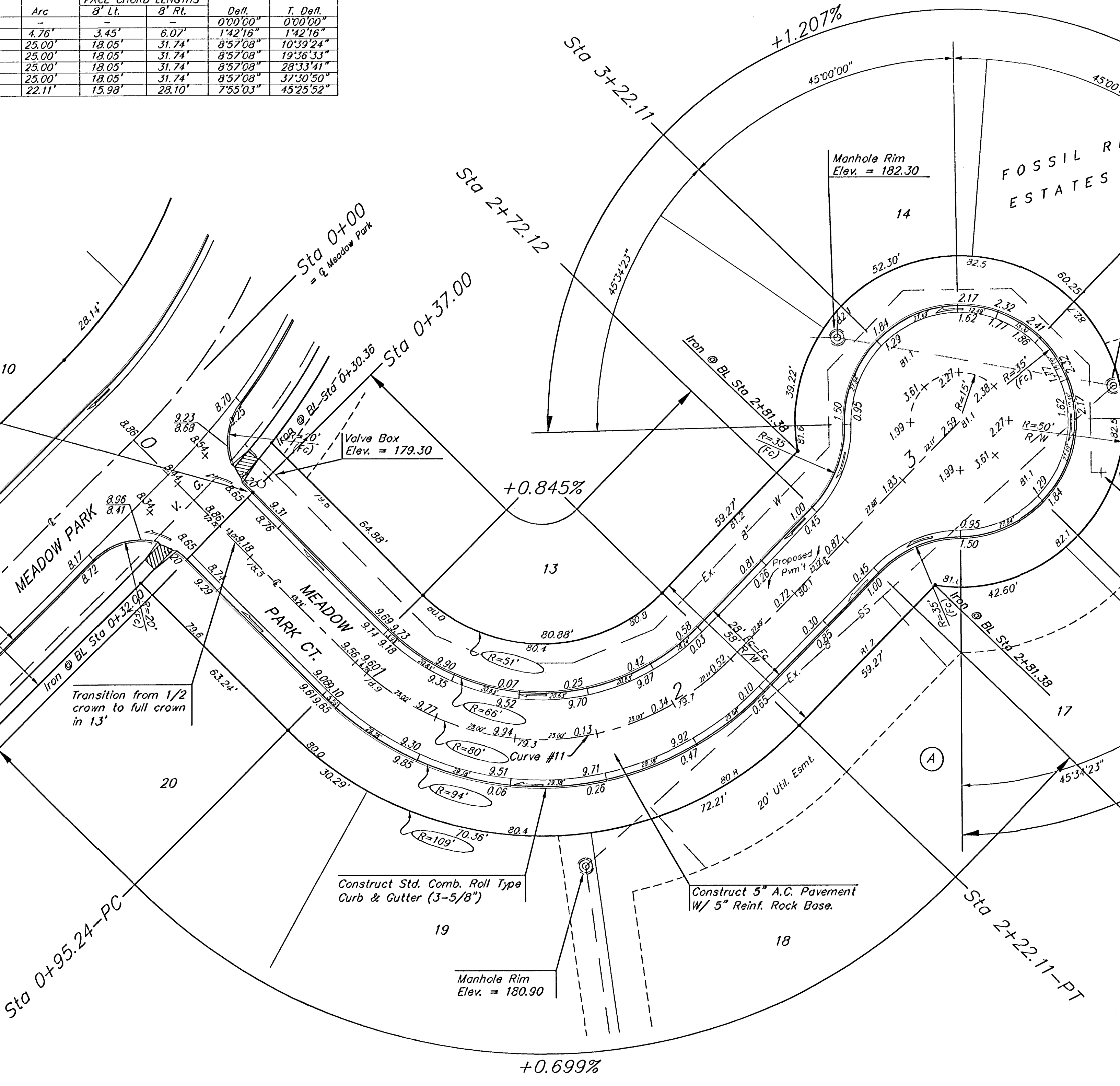


Curve #11
Curve Data Based on Centerline
 $\Delta = 80^\circ$ Delta = $90^\circ 51' 45''$ Tangent = 81.21'
 $L = 126.87'$ L.C. = 113.99' Def/Ft. = 21.48558 Min.

Arc	FACE CHORD LENGTHS		Defl.	T. Defl.
	8' Lt.	8' Rt.		
-	-	-	0'00"00"	0'00"00"
4.76'	3.45'	6.07'	1'42"16"	1'42"16"
25.00'	18.05'	31.74'	8'57"08"	10'39"24"
25.00'	18.05'	31.74'	8'57"08"	19'36"33"
25.00'	18.05'	31.74'	8'57"08"	28'33"41"
25.00'	18.05'	31.74'	8'57"08"	37'30"50"
22.11'	15.98'	28.10'	7'55"03"	45'25"52"



NOTE: ROLL TYPE CURB & BE CONSTRUCTED TO BE CONSTRUCTED TO PAVEMENT SHOWN ON TOP OF CURB ELEV. GIVEN FOR FULL HE