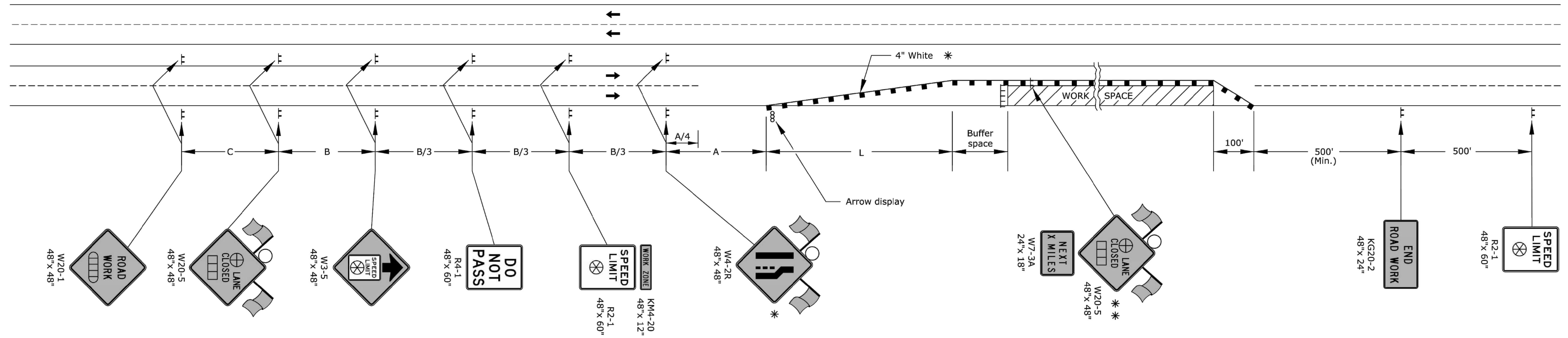
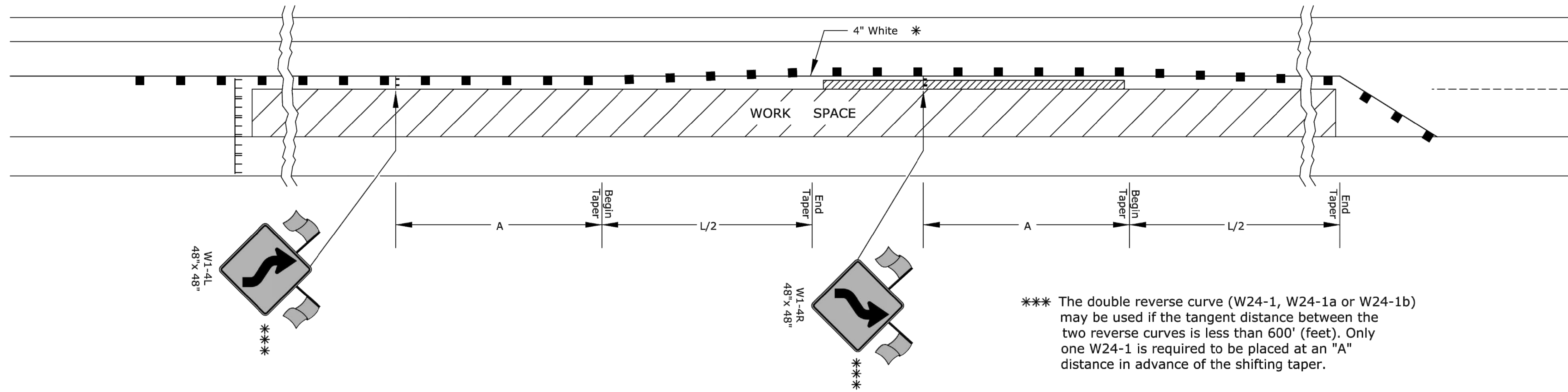


STATE	PROJECT NO.	YEAR	SHEET NO.	TOTAL SHEETS
KANSAS	472-85237	2017	24	XX

SHIFTING TAPER DETAIL

Add signs and devices as shown for work inside a closed lane that extends near to (or into) the open traffic lane.



- ▬▬▬ Type 3 barricades
- X Length to the nearest whole mile
- Channelizing device
- ▭▭▭ Ahead, 1500 ft, or 1 mile
- ▭▭▭ Ahead, 1000 ft, 1500 ft, or 1/2 mile
- ⊕ Right or left
- ⊗ Speed to be determined by the Engineer
- Type "A" low intensity warning light

- * For left lane closures use W4-2L and yellow edge line along channelizing devices.
- * * The W20-5 (⊕ Lane Closed) and W7-3A (Next X Miles) signs should be placed at 2 mile increments on a project of 4 miles or longer.

Left-side signs shall be omitted for a four-lane undivided highway.

One flagger should be stationed within each multi-lane roadway activity area where work is in a closed lane adjacent to traffic and not separated by a concrete safety barrier system.

Sowed 03-23-2017 8:45:43 AM by BJS
Plot Scale 1:1 04-13-2017 7:56:07 AM
U:\Vichita-Civil\2015\15138\004\Drawings\15138-004-24C-FOUR-LANE HIGHWAY ONE LANE CLOSURE

3					
2					
1					
NO.	DATE	REVISIONS	BY	APP'D	
KANSAS DEPARTMENT OF TRANSPORTATION					
TRAFFIC CONTROL LANE CLOSURE ON MULTILANE HWY					
TE744					
DESIGNED	B.A.H.	APP'D	R.W.B.	QUANTITIES	TRACED
DESIGN CK.	DETAIL CK.	QUAN. CK.	TRACE CK.		