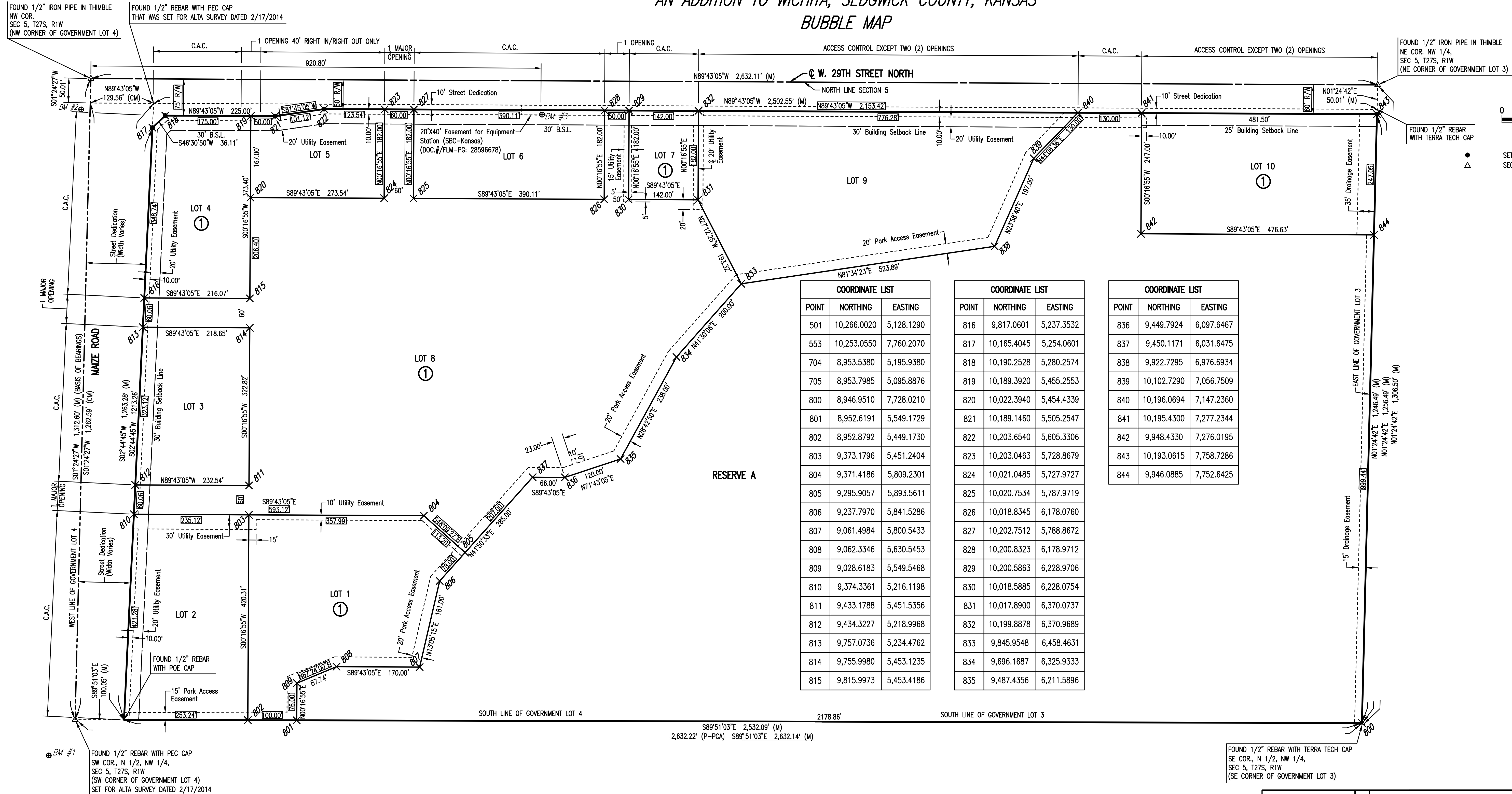


CADILLAC LAKE

AN ADDITION TO WICHITA, SEDGWICK COUNTY, KANSAS

BUBBLE MAP



SCALE: 1" = 100'

0 100 200

LEGEND

● SET 1/2" REBAR W/PEC CAP

△ SECTION CORNER

POINT	NORTHING	EASTING
501	10,266.0020	5,128.1290
553	10,253.0550	7,760.2070
704	8,953.5380	5,195.9380
705	8,953.7985	5,095.8876
800	8,946.9510	7,728.0210
801	8,952.6191	5,549.1729
802	8,952.8792	5,449.1730
803	9,373.1796	5,451.2404
804	9,371.4186	5,809.2301
805	9,295.9057	5,893.5611
806	9,237.7970	5,841.5286
807	9,061.4984	5,800.5433
808	9,062.3346	5,630.5453
809	9,028.6183	5,549.5468
810	9,374.3361	5,216.1198
811	9,433.1788	5,451.5356
812	9,434.3227	5,218.9968
813	9,757.0736	5,234.4762
814	9,755.9980	5,453.1235
815	9,815.9973	5,453.4186

POINT	NORTHING	EASTING
816	9,817.0601	5,237.3532
817	10,165.4045	5,254.0601
818	10,190.2528	5,280.2574
819	10,189.3920	5,455.2553
820	10,022.3940	5,454.4339
821	10,189.1460	5,505.2547
822	10,203.6540	5,605.3306
823	10,203.0463	5,728.8679
824	10,021.0485	5,727.9727
825	10,020.7534	5,787.9719
826	10,018.8345	6,178.0760
827	10,202.7512	5,788.8672
828	10,200.8323	6,178.9712
829	10,200.5863	6,228.9706
830	10,018.5885	6,228.0754
831	10,017.8900	6,370.0737
832	10,199.8878	6,370.9689
833	9,845.9548	6,458.4631
834	9,696.1687	6,325.9333
835	9,487.4356	6,211.5896

POINT	NORTHING	EASTING
836	9,449.7924	6,097.6467
837	9,450.1171	6,031.6475
838	9,922.7295	6,976.6934
839	10,102.7290	7,056.7509
840	10,196.0694	7,147.2360
841	10,195.4300	7,277.2344
842	9,948.4330	7,276.0195
843	10,193.0615	7,758.7286
844	9,946.0885	7,752.6425

Served 03-22-2017 7:52:11 AM by BJS
 Plot Scale 1" = 100' - 2017 7:55:06 AM by BJS
 U:\Wichita-Civil\2015\15138\004\Drawings\15138-004-PLAT-CADILLAC LAKE

GARY JANZEN, P.E.
CITY ENGINEER
CITY OF WICHITA PROJECT NO. 472-85237

No.	Revision	By	Date

CADILLAC LAKE PHASE 1
MAIZE ROAD TURNING LANES

PLAT-CADILLAC LAKE

PROFESSIONAL ENGINEERING CONSULTANTS, P.A.
303 SOUTH TOPEKA WICHITA, KS 67202
316-262-2691 www.pec1.com

Designed by **BMM**

Drawn by **BJS**

Job No. **35-15138-004**

Date **April 2017**

Sht. **03** of **28**