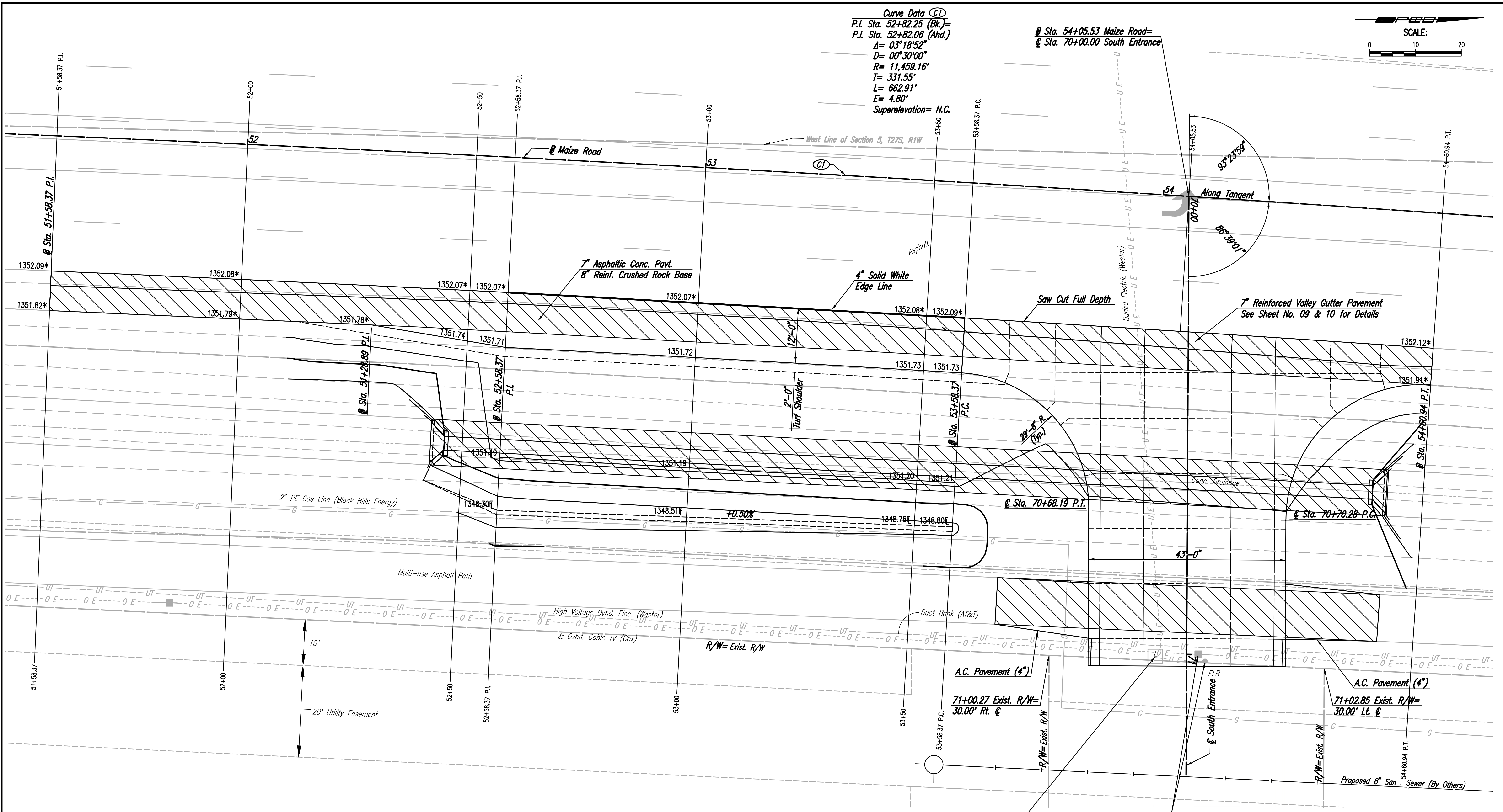


Curve Data (C1)
 P.I. Sta. 52+82.25 (Bk.)=
 P.I. Sta. 52+82.06 (Ahd.)
 $\Delta = 03^{\circ}18'52''$
 $D = 00^{\circ}30'00''$
 $R = 11,459.16'$
 $T = 331.55'$
 $L = 662.91'$
 $E = 4.80'$
 Superelevation = N.C.

Maize Road =
 Sta. 54+05.53
 Sta. 70+00.00 South Entrance



PAVEMENT MARKING				
ROADWAY	STATION TO STATION	SIDE	4" SOLID WHITE EDGE LINE (L.F.)	
Maize Road	52+58.37	53+58.37	Rt.	100
TOTALS				100

LEGEND
 Pavement Removal=609.3 S.Y. (S) *
 * Match Existing

(S) The Bid Item "Pavement Removal" Includes Multi-use Asphalt Path Removal, Asphalt Shoulder Removal, and Concrete Ditch Lining Removal.



No.	Revision	By	Date
CADILLAC LAKE PHASE 1 MAIZE ROAD TURNING LANES PAVING PLAN-SOUTH ENTRANCE GARY JANZEN, P.E. - CITY ENGINEER CITY OF WICHITA PROJECT NO. 472-85237			
PROFESSIONAL ENGINEERING CONSULTANTS, P.A. 303 SOUTH TOPEKA WICHITA, KS 67202 316-262-2691 www.pec1.com			
Designed by	BMM	Job No.	35-15138-004
Drawn by	BJS	Date	April 2017
			Sht. 04 of 28

Sowed 04-07-2017 9:44:19 AM by BJS
 Plot Scale 1:1 04-13-2017 7:55:23 AM by BJS
 U:\Wichita-Civil\2015\15138\004\Drawings\15138-004-PAVING PLAN-SOUTH ENTRANCE