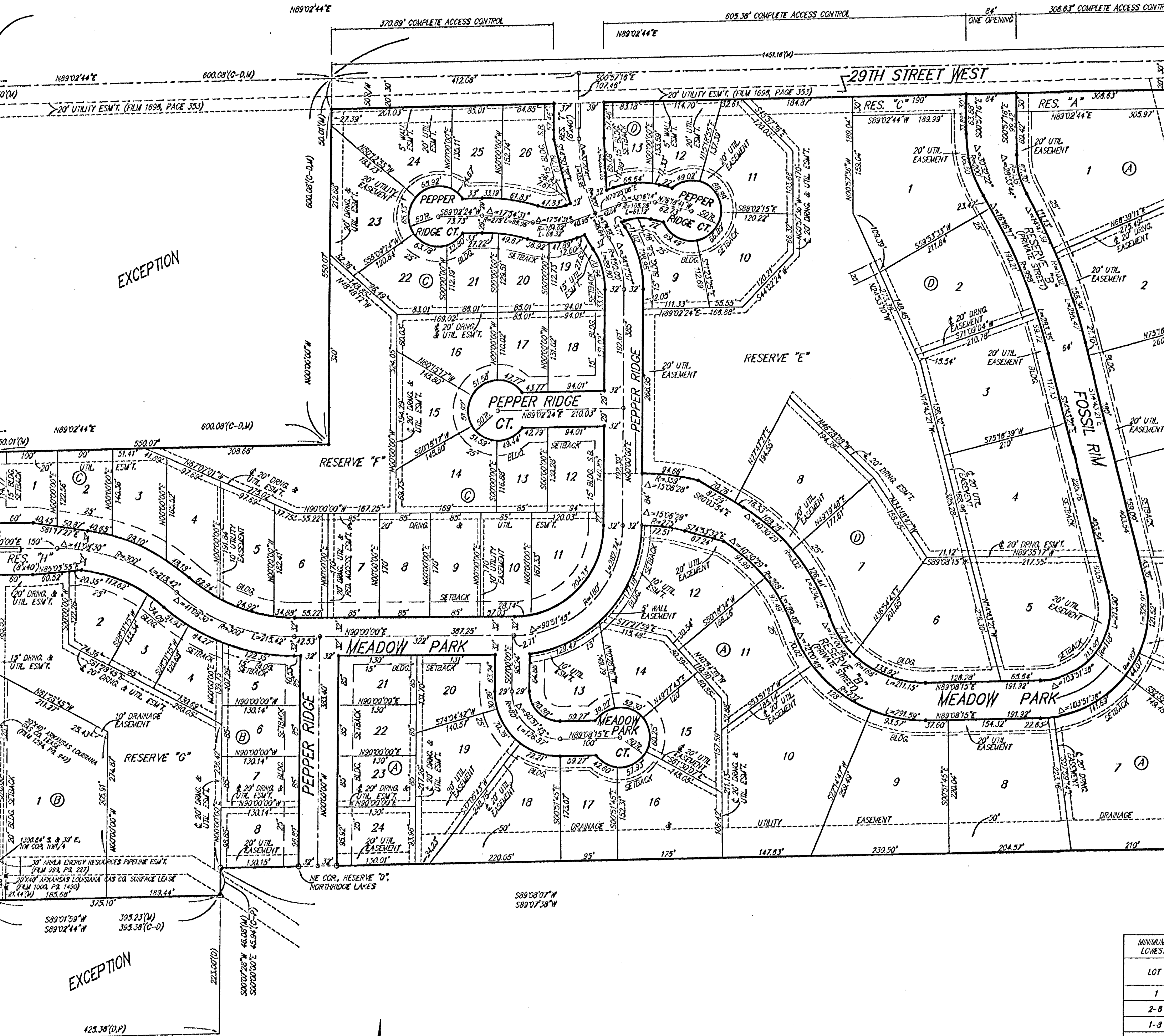


FOSSIL RIM ESTATES WICHITA, SEDGWICK COUNTY, KANSAS



- = #4 Rebar w/ "Daughman" Cap (Set)
- = 3/4" Iron w/ "P.E.C." cap (Found)
- = 1/2" Iron in Thimble (Found)
- △ = 3/4" Iron (Found)
- ⊙ = 1/2" Iron (Found)
- × = #3 Rebar (Found)

- (M) = Measured
- (D) = Described
- (P) = Platted
- (C-D) = Calculated per Described Info
- (C-P) = Calculated per Platted Info

NOTE:
License to establish and maintain a surface water drainage system over the north 500 feet of the E1/2 of the NW1/4 of Sec. 4, to carry surface water to the north line of said NW1/4, (Film 1174, Page 554).

NOTE:
A master grading plan for drainage has been developed for this subdivision and is on file with the City of Wichita, Kansas. All drainage easements, right-of-ways, or reserves shall remain at established grades or as modified with the approval of the City Engineer of the City of Wichita, Kansas. No obstructions which impede the flow of this drainage system be allowed.

MINIMUM LOWEST	LOT
	1
	2-8
	1-8
	3-5
	6
	7,8
	14,15
	16,22,23
	1-4
	5
	6
	7
	8
	9-11

BENCHMARKS
City of Wichita
Tie Time on
Elev. = 142.

COR. NW1/4, SEC. 4,
P. 27-S, R-1-W