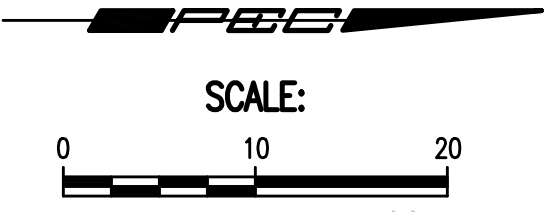
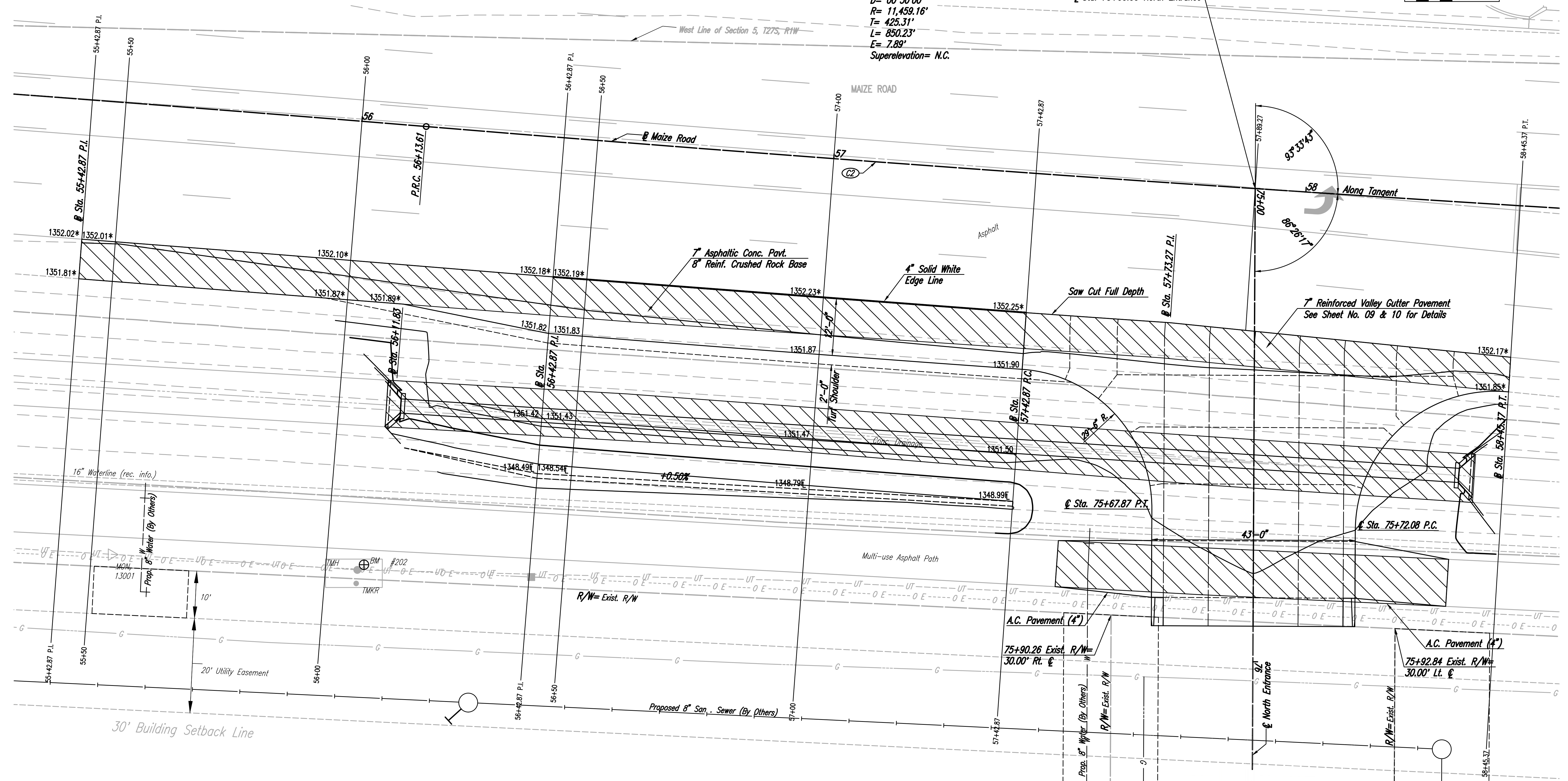


Curve Data (C2)
 P.I. Sta. 60+38.92 (Bk.)=
 P.I. Sta. 60+38.53 (Ahd.)
 A= 04°15'04"
 D= 00°30'00"
 R= 11,459.16'
 T= 425.31'
 L= 850.23'
 E= 7.89'
 Superelevation= N.C.



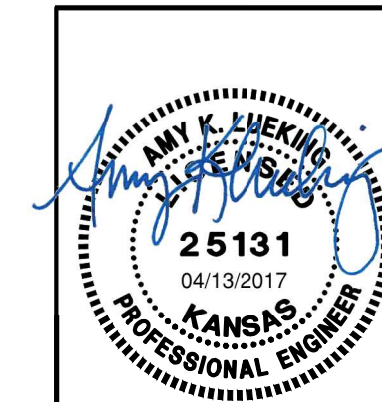
Sta. 57+89.27 Maize Road=
 Sta. 75+00.00 North Entrance



PAVEMENT MARKING			
ROADWAY	STATION TO STATION	SIDE	4" SOLID WHITE EDGE LINE (L.F.)
Maize Road	56+42.87 57+42.87	Rt.	100
TOTALS			100

LEGEND
 Pavement Removal=600.8 S.Y.⊕
 * Match Existing

⊕ The Bid Item "Pavement Removal" Includes Multi-use Asphalt Path Removal, Asphalt Shoulder Removal, and Concrete Ditch Lining Removal.



No.	Revision	By	Date
CADILLAC LAKE PHASE 1 MAIZE ROAD TURNING LANES PAVING PLAN-NORTH ENTRANCE GARY JANZEN, P.E. - CITY ENGINEER CITY OF WICHITA PROJECT NO. 472-85237			
PROFESSIONAL ENGINEERING CONSULTANTS, P.A. 303 SOUTH TOPEKA WICHITA, KS 67202 316-262-2691 www.pec1.com			
Designed by	BMM	Job No.	35-15138-004
Drawn by	BJS	Date	April 2017
			Sht. 05 of 28

Sowed 04-03-2017 4:58:08 PM by BJS
 Plot Scale 1:1 04-13-2017 7:55:35 AM by BJS
 U:\Wichita-Civil\2015\15138\004\Drawings\15138-004-05C-PAVING PLAN-NORTH ENTRANCE