

GENERAL NOTES:

1. Contractor will be required to provide notice to utility companies a minimum of forty-eight (48) hours prior to any excavation, as follows:

Kansas One-Call 687-2470

The Contractor must notify the following in case of an emergency:

- Cox Communications 262-4270
- Kansas Gas Service 1-888-482-4950
- Westar Energy 383-8650
- Aquila Energy 1-800-303-0357
- AT&T 268-2245
- City of Wichita Water Dept. 268-4563
- City of Wichita Sewer Maint. 268-4024
- City of Wichita Storm Sewer Maint. 268-4090
- City of Wichita Traffic Maint. 268-4034
- Conoco Phillips Pipeline Co. 1-877-267-2290
- Southern Star Pipeline Co. 529-6600
- Kinder-Morgan Pipeline Co. 1-888-844-5658

2. Utility service lines, poles, valve boxes, meters, and etcetera are to be adjusted as necessary by others prior to construction unless the plans specifically call for their adjustment by the Contractor or unless the plans specifically identify a utility to be adjusted by its owner during construction. Existing utilities and their location, as shown on the plans, represent the best information obtainable for design. The Contractor will be required to work around existing utilities within the right-of-way which do not conflict with proposed construction.

3. Rubble from the removal of miscellaneous structures and excess excavation which is to be wasted shall be disposed of on sites to be provided by the Contractor. These sites shall be approved by the Engineer as to suitability, appearance and site location. Locations, in the opinion of the Engineer, that will leave an unsightly appearance will not be approved. All disposal sites must be approved by the Kansas Department of Health and Environment. Material either stockpiled or disposed of in a flood plain would require a Kansas State Board of Agriculture permit. Any material dumped in waters of the United States or wetlands is subject to U.S. Corps of Engineers permitting regulations. Any material buried or stockpiled beyond approved construction limits would require additional archaeological investigations unless buried in a previously approved borrow location.

4. Trees and shrubs in public right-of-way which are in direct conflict with proposed new construction shall be removed by the Contractor with the Engineer's approval. Trees and shrubs which are not in direct conflict with proposed new construction shall be saved and protected from damage.

5. The Contractor shall give all property owners and/or tenants of developed property abutting the construction of this project a minimum of ten (10) days notice prior to start of construction.

6. The Contractor shall be responsible for preserving property irons. The Contractor will be required to re-establish any property irons which are damaged or destroyed by his construction operations. Such irons shall be re-established by a licensed land surveyor in accordance with state laws.

7. All existing and proposed erosion control measures including silt fencing, erosion control mat, straw bales, inlet barriers, and const. entrance shall be maintained throughout construction by the contractor and until project is accepted by the City of Wichita. The on-site engineer shall complete weekly reports on the status of erosion control measures. The contractor shall be required to comply with maintenance and/or replacement of erosion control measures as determined by the on-site engineer until project is accepted by City of Wichita. Maintenance and/or replacement of erosion control measures to be paid by L.S. bid item "Maintain Existing BMP's."

8. A saw cut of at least one-half the depth of existing surface courses or one-fourth the depth of the existing total pavement thickness shall be provided at locations where proposed construction abuts the existing surface course or pavement for which partial removal of that surface or pavement is required. Sawed joint to facilitate removal within three (3) feet of existing joints will not be permitted and for such instances the limits of removal shall extend to the existing joint. Such saw cuts will not be paid for directly and this cost shall be considered as subsidiary to the removal of the surface or pavement.

9. All areas disturbed during construction shall be seeded as follows (Temporary Seeding):

Seed: Rye grass (PLS)--5 lbs./1000 Sq. Ft.

All costs associated with seeding shall be included in bid item "Seeding". All seeding operations shall conform to City of Wichita Standard Specifications.

10. The Contractor shall adjust valve boxes as necessary to match proposed grade. Cost to be included in bid item, "Site Restoration."

11. Limits of earthwork shall match existing ground elevations at the right-of-way line unless otherwise noted on the plans with a new finished grade elevation. When a new finished grade elevation is shown, the earthwork shall extend one foot beyond the right-of-way line and then slope up or down using permissible slopes to match the existing ground surface.

12. The Developer for this project is Jay Russell (316) 722-2417.

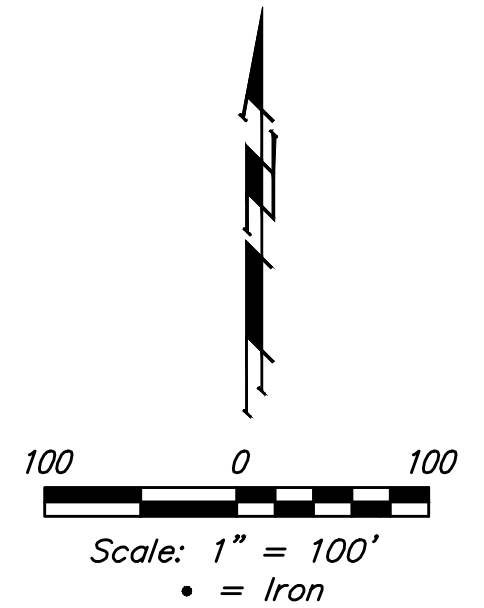
STREET PAVING FOR ASTER to serve VASSAR ADDITION - PHASE III CITY OF WICHITA, KANSAS

Gary Janzen, P.E. City Engineer

Project Number 472-85258

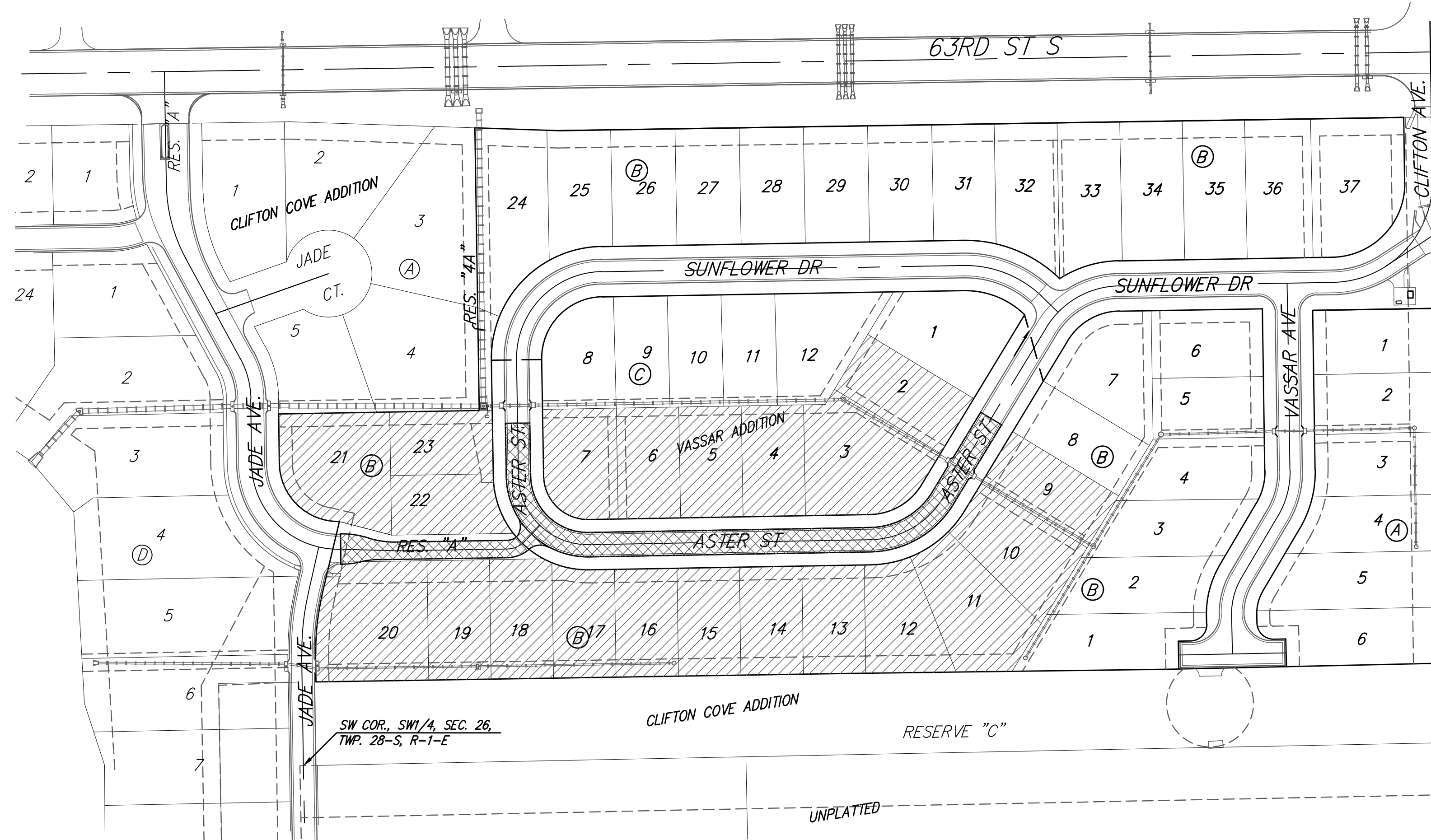
OCA Number 766385

Aster St.: from the south line of Lot 8, Block B; west and north to the south line of Lot 8, Block C.
Pavement from the west line of Aster St. to the east line of Jade Ave. (as platted in Clifton Cove Addition)
to serve as an emergency access within Reserve "A", Vassar Addition.



SHEET INDEX

Title Sheet	1
Asphalt Paving Detail	2
Alley Paving Details	3
Curb & Gutter Details	4
Aster	5-6
Reserve "A" Paving	7
Erosion Control Plan	8
Erosion Control BMP Details	9-13
Cross Sections	14-16
Coordinate Sheet	17
Copy of Plat	18

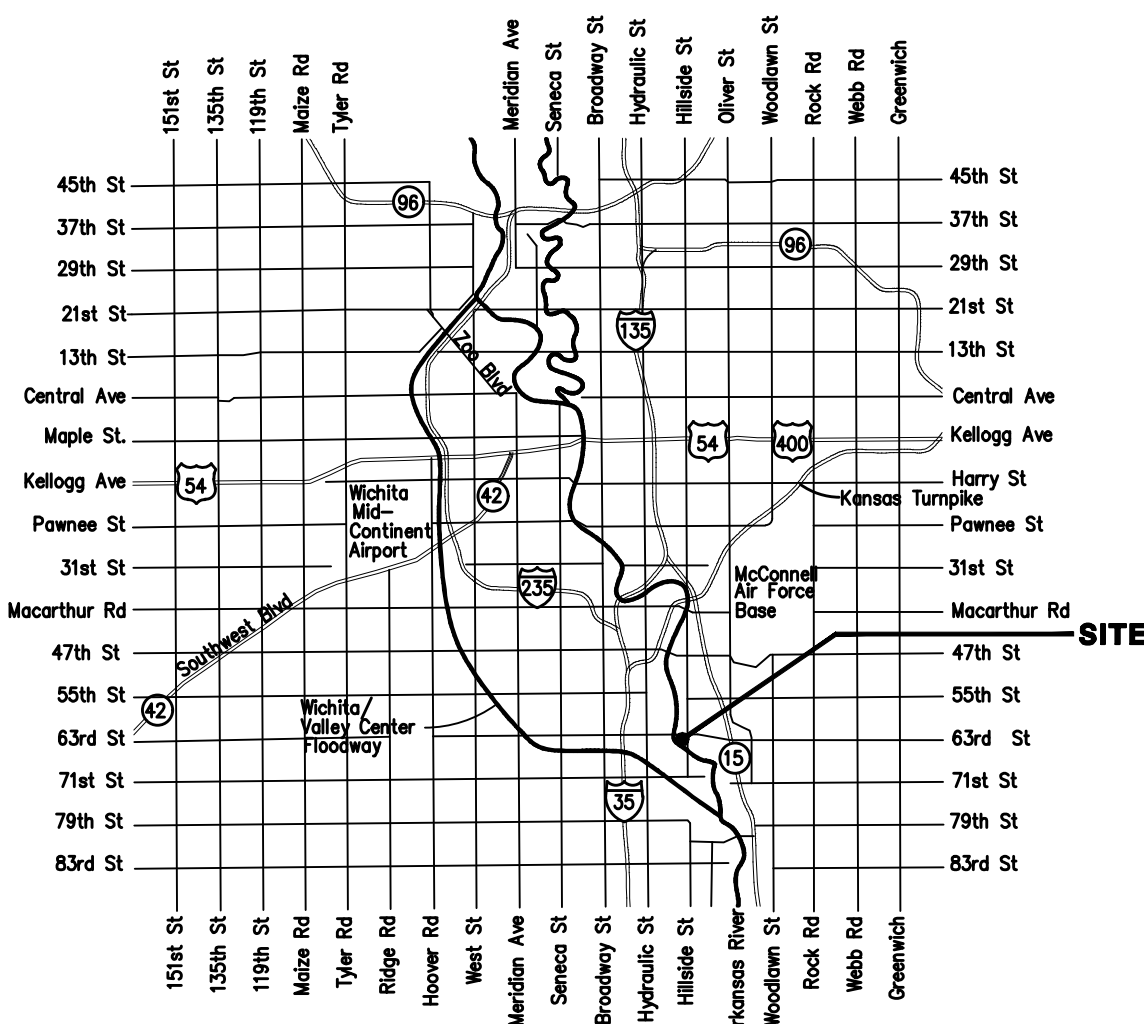


BENCHMARKS

Chiseled square on top of catch basin, 43.5' N. & 20.4' W. of the northwest corner of Lot 24, Block B, Vassar Addition.
Elev. = 1259.55 NGVD29

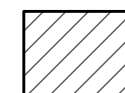
Chiseled cross on top of catch basin, 48.2' N. & 41.2' W. of the northeast corner of Lot 37, Block B, Vassar Addition.
Elev. = 1258.46 NGVD29

Chiseled cross on walk, most easterly corner, (block corner), Lot 4, Block D, Clifton Cove Addition, 35.2' W. & 8.5' S. of the northwest corner, Lot 20, Block B, Vassar Addition.
Elev. = 1258.62 NGVD29



Vicinity Map

BENEFIT DISTRICT



PROPOSED PAVEMENT



Street (R/W)	Excavation	Loose Fill (not a bid item)	Compacted Fill
	541	317	0
Total Project Length			
932 L.F. = 0.18 Miles			



Baughman Company, P.A. 315 Ellis St. Wichita, KS 67211 P 316-262-7271 F 316-262-0149
ENGINEERING | SURVEYING | PLANNING | LANDSCAPE ARCHITECTURE

