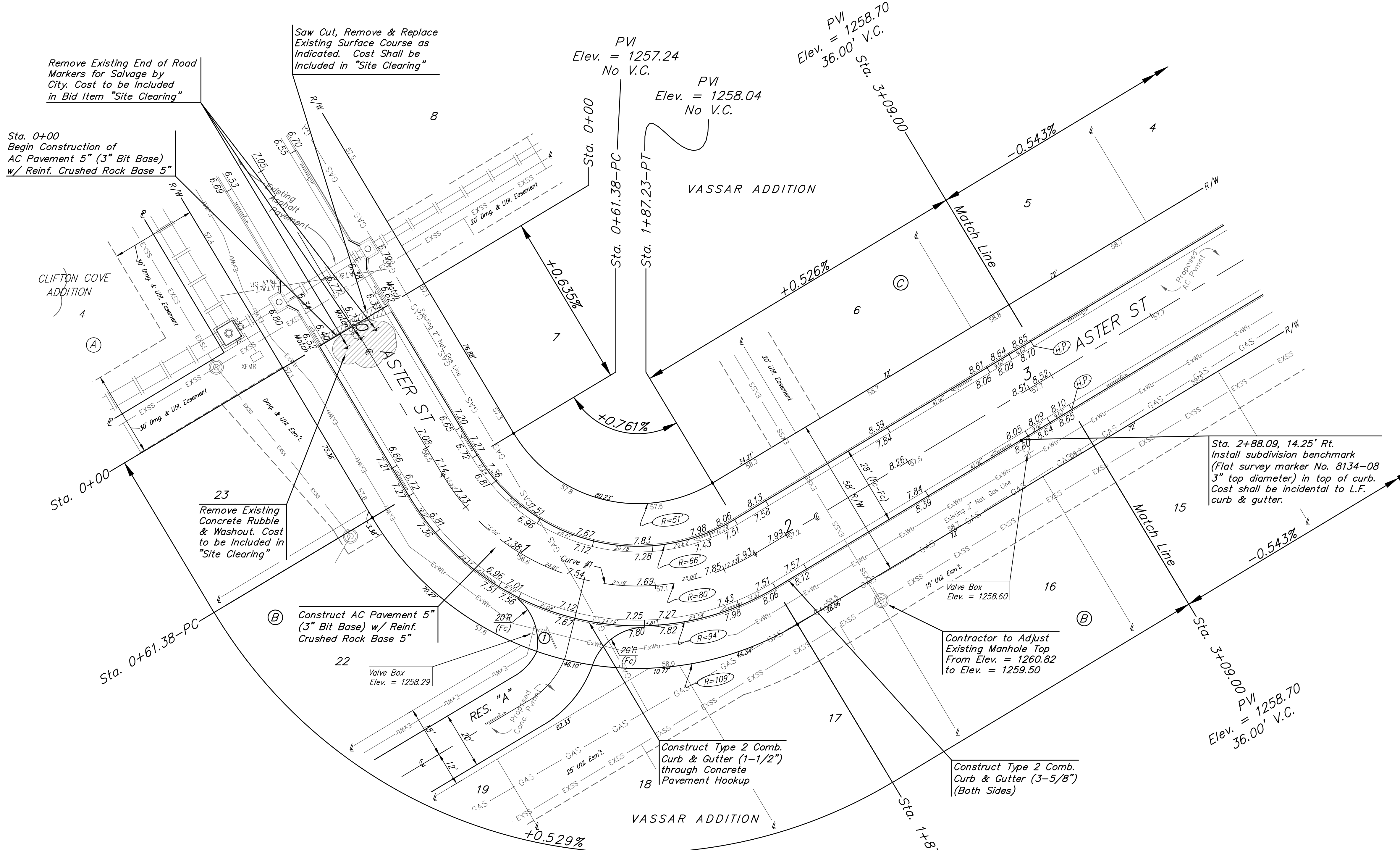
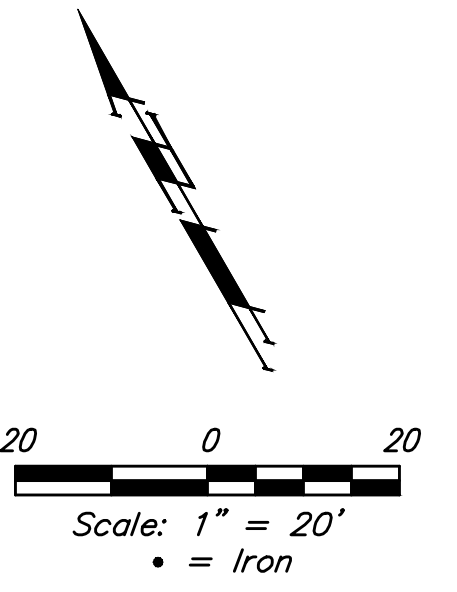


BENCHMARKS:
 Chiseled square on top of catch basin, 43.5' N. & 20.4' W. of the northwest corner of Lot 24, Block B, Vassar Addition.
 Elev. = 1259.55 NGVD29

Chiseled cross on top of catch basin, 48.2' N. & 41.2' W. of the northeast corner of Lot 37, Block B, Vassar Addition.
 Elev. = 1258.46 NGVD29

Chiseled cross on walk, most easterly corner, (block corner), Lot 4, Block D, Clifton Cove Addition, 35.2' W. & 8.5' S. of the northwest corner, Lot 20, Block B, Vassar Addition.
 Elev. = 1258.62 NGVD29



Curve #1
 Curve Data Based on Centerline
 Rad. = 80' Delta = 90°08'08" Tangent = 80.19'
 Arc = 125.85' L.C. = 113.27' Def./Ft. = 21.48643 Min.

Station	Arc	Face Chord Length		Defl.	Total Defl.
		8' Left	8' Right		
0+61.38	-	-	-	0°00'00"	0°00'00"
0+75.00	13.62'	9.86'	17.34'	4°52'39"	4°52'39"
1+00.00	25.00'	18.05'	31.75'	8°57'09"	13°49'48"
1+25.00	25.00'	18.05'	31.75'	8°57'10"	22°46'58"
1+50.00	25.00'	18.05'	31.75'	8°57'10"	31°44'08"
1+75.00	25.00'	18.05'	31.75'	8°57'09"	40°41'17"
1+87.23	12.23'	8.86'	15.58'	4°22'47"	45°04'04"

SUBDIVISION BENCH MARKS

Street & Station	Location Description	Elevation
Aster St	Adjacent to Fire Hydrant at SW Corner of Lot 15, Block B	

VALVE LOCATION TABLE

Valve Number	Baseline Station	Offset Distance	Offset Direction
1	1+14.55	24'	Rt

Type 2 Comb. Curb & Gutter (3-5/8") to be constructed on the pavement on this sheet. Top of curb elevation are given for full height curb (6-5/8").

Baughman Vassar Addition - Phase III
ASTER ST
 Sta. 0+00 to Sta. 3+09.00

Baughman Company, P.A. 315 Ellis St. Wichita, KS 67211 P 316-262-7271 F 316-262-0149
 ENGINEERING | SURVEYING | PLANNING | LANDSCAPE ARCHITECTURE

PROJECT NUMBER: 472-83258
 DESIGN: AEG
 DRAWN: JAK
 APPROVED: [Signature]
 DATE: 4/20/17

REVISIONS:

SCALE: Noted
 SHEET: **5 OF 18**

Professional Engineer Seal: JUSTIN E. GOTTLOB, No. 17919, 4/21/17, KANSAS, PROFESSIONAL ENGINEER