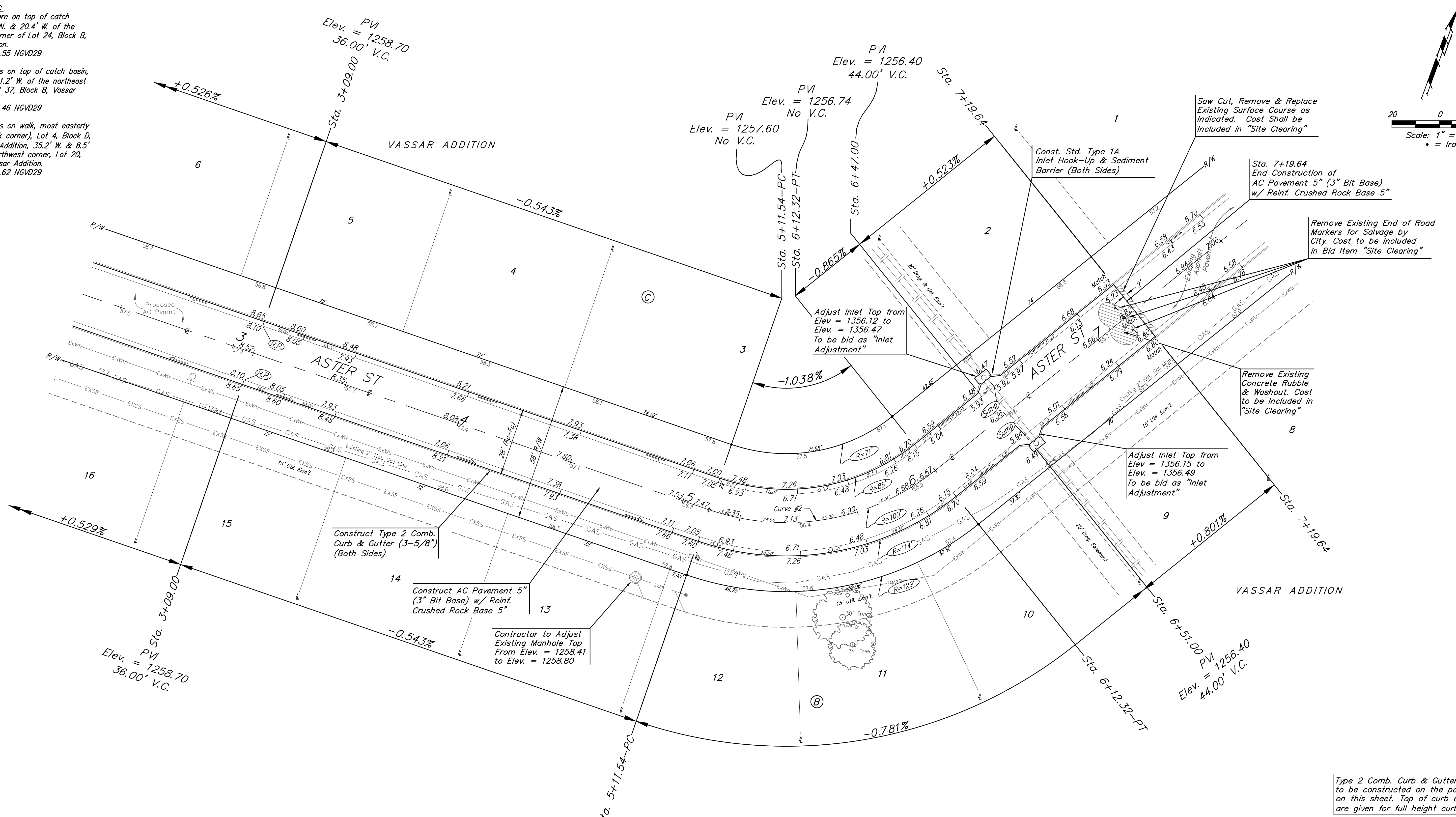
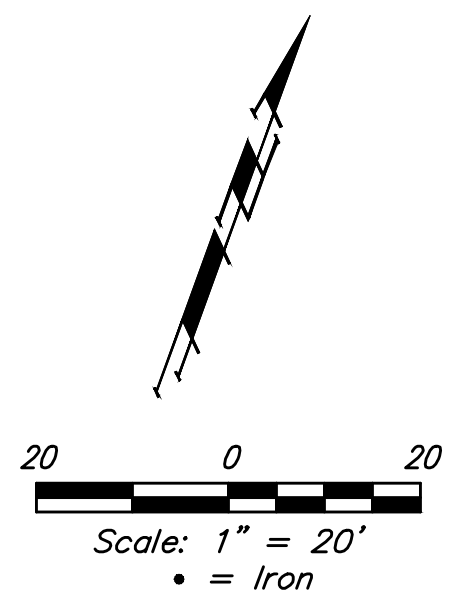


**BENCHMARKS:**  
 Chiseled square on top of catch basin, 43.5' N. & 20.4' W. of the northwest corner of Lot 24, Block B, Vassar Addition.  
 Elev. = 1259.55 NGVD29

Chiseled cross on top of catch basin, 48.2' N. & 41.2' W. of the northeast corner of Lot 37, Block B, Vassar Addition.  
 Elev. = 1258.46 NGVD29

Chiseled cross on walk, most easterly corner, (block corner), Lot 4, Block D, Clifton Cove Addition, 35.2' W. & 8.5' S. of the northwest corner, Lot 20, Block B, Vassar Addition.  
 Elev. = 1258.62 NGVD29



Curve #2  
 Curve Data Based on Centerline  
 Rad. = 100' Delta = 57°44'32" Tangent = 55.14'  
 Arc = 100.78' L.C. = 96.57' Def./Ft. = 17.18860 Min.

Station	Arc	Face Chord Length		Defl.	Total Defl.
		8' Left	8' Right		
5+11.54	-	-	-	0'00'00"	0'00'00"
5+25.00	13.46'	10.49'	16.41'	3'51'22"	3'51'22"
5+50.00	25.00'	19.45'	30.42'	7'09'42"	11'01'04"
5+75.00	25.00'	19.45'	30.42'	7'09'43"	18'10'47"
6+00.00	25.00'	19.45'	30.42'	7'09'43"	25'20'30"
6+12.32	12.32'	9.60'	15.02'	3'31'46"	28'52'16"

Type 2 Comb. Curb & Gutter (3-5/8") to be constructed on the pavement on this sheet. Top of curb elevation are given for full height curb (6-5/8").

		Vassar Addition - Phase III	
		<b>ASTER ST</b>	
Sta. 3+09.00 to Sta. 7+19.64		<small>Baughman Company, P.A. 315 Ellis St. Wichita, KS 67211 P 316-262-7271 F 316-262-0149          ENGINEERING   SURVEYING   PLANNING   LANDSCAPE ARCHITECTURE</small>	
PROJECT NUMBER 472-85258	DESIGN AEG	DRAWN JAK	DATE 4/20/17
REVISIONS:	<small>APPROVED</small> 		
	SCALE Noted	SHEET	
<b>6 OF 18</b>			

E:\Projects\Vassar Addition\_1403P029\Engineering\Phase 3\Str\_1603E423\STR PLANS.dwg