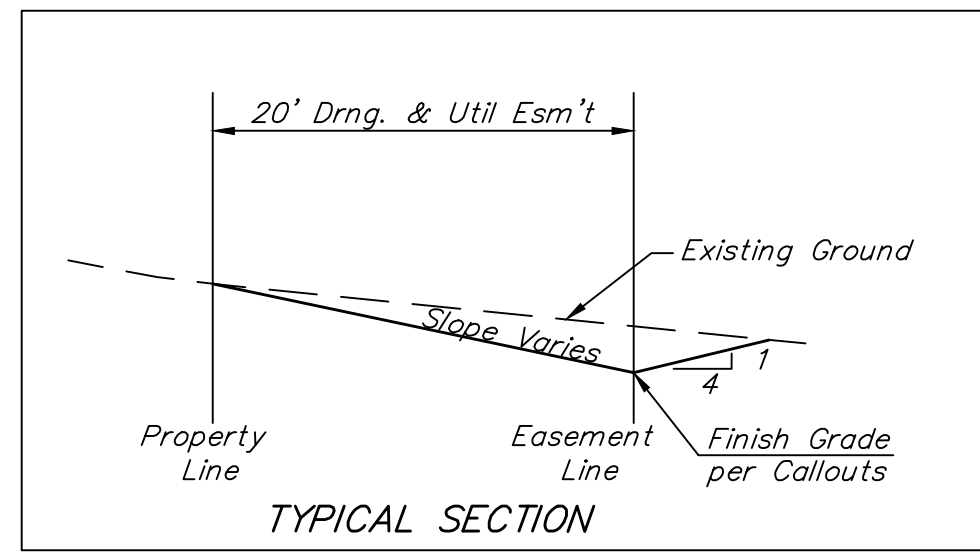


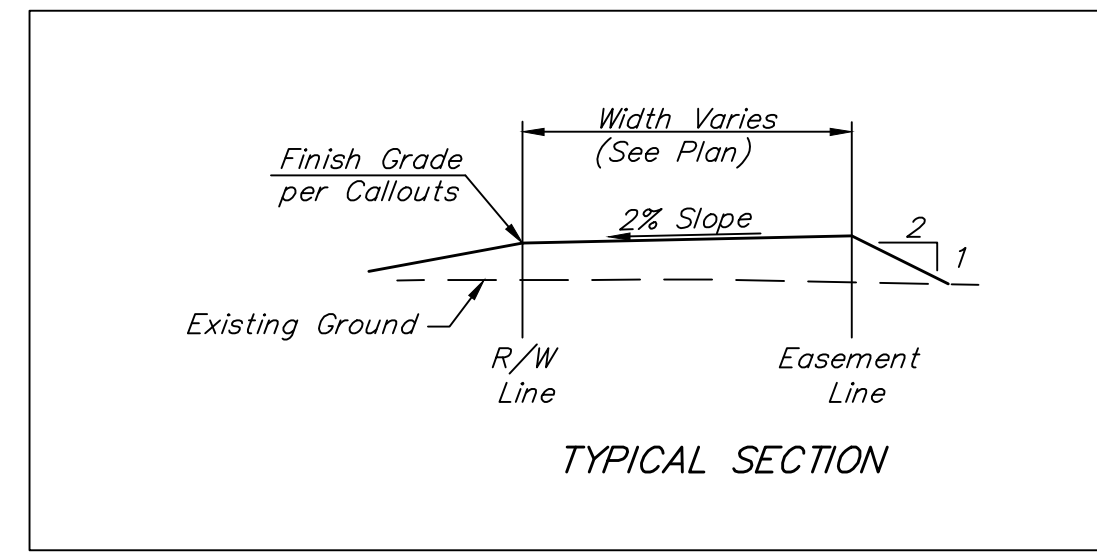
BENCHMARKS:
 Chiseled square on top of catch basin, 43.5' N. & 20.4' W. of the northwest corner of Lot 24, Block B, Vassar Addition.
 Elev. = 1259.55 NGVD29

Chiseled cross on top of catch basin, 48.2' N. & 41.2' W. of the northeast corner of Lot 37, Block B, Vassar Addition.
 Elev. = 1258.46 NGVD29

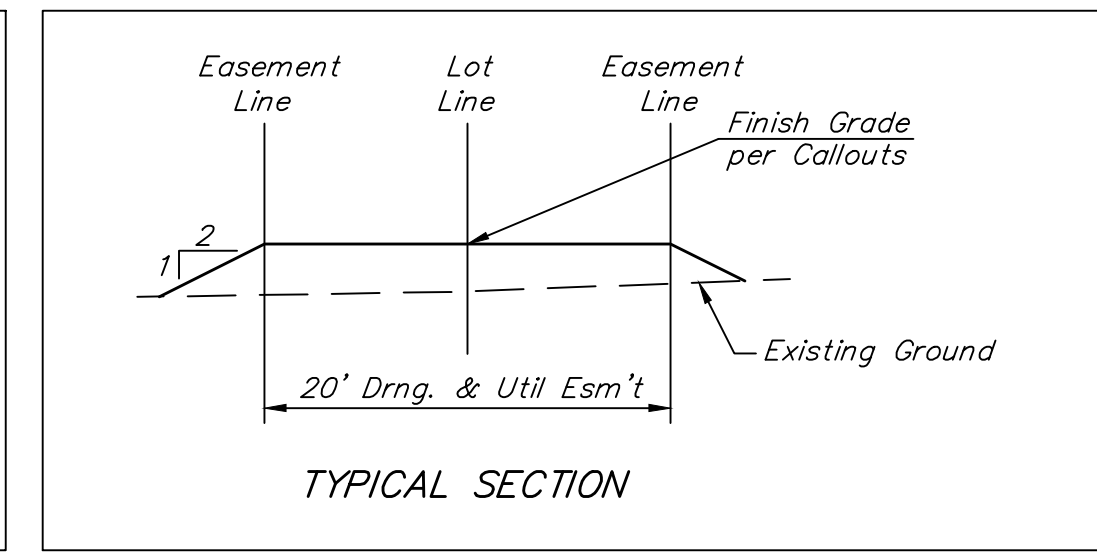
Chiseled cross on walk, most easterly corner, (block corner), Lot 4, Block D, Clifton Cove Addition, 35.2' W. & 8.5' S. of the northwest corner, Lot 20, Block B, Vassar Addition.
 Elev. = 1258.62 NGVD29



SECTION A-A



SECTION B-B



SECTION C-C

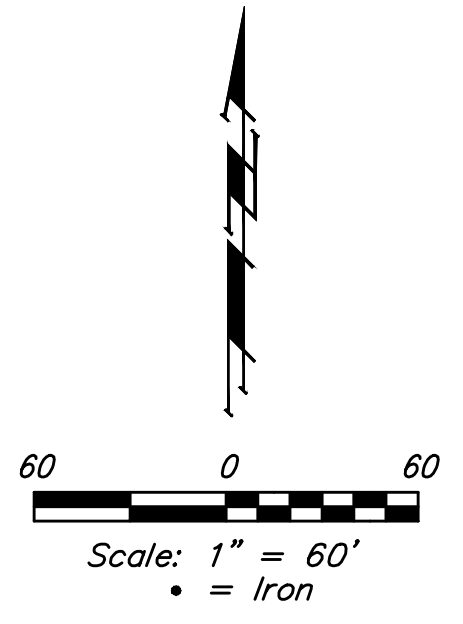
= Easements To Be Fine Graded

All easements have been previously graded with the Stormwater Sewer project. The Contractor shall fine grade the easements as shown to the elevations given on the easement grading plan.

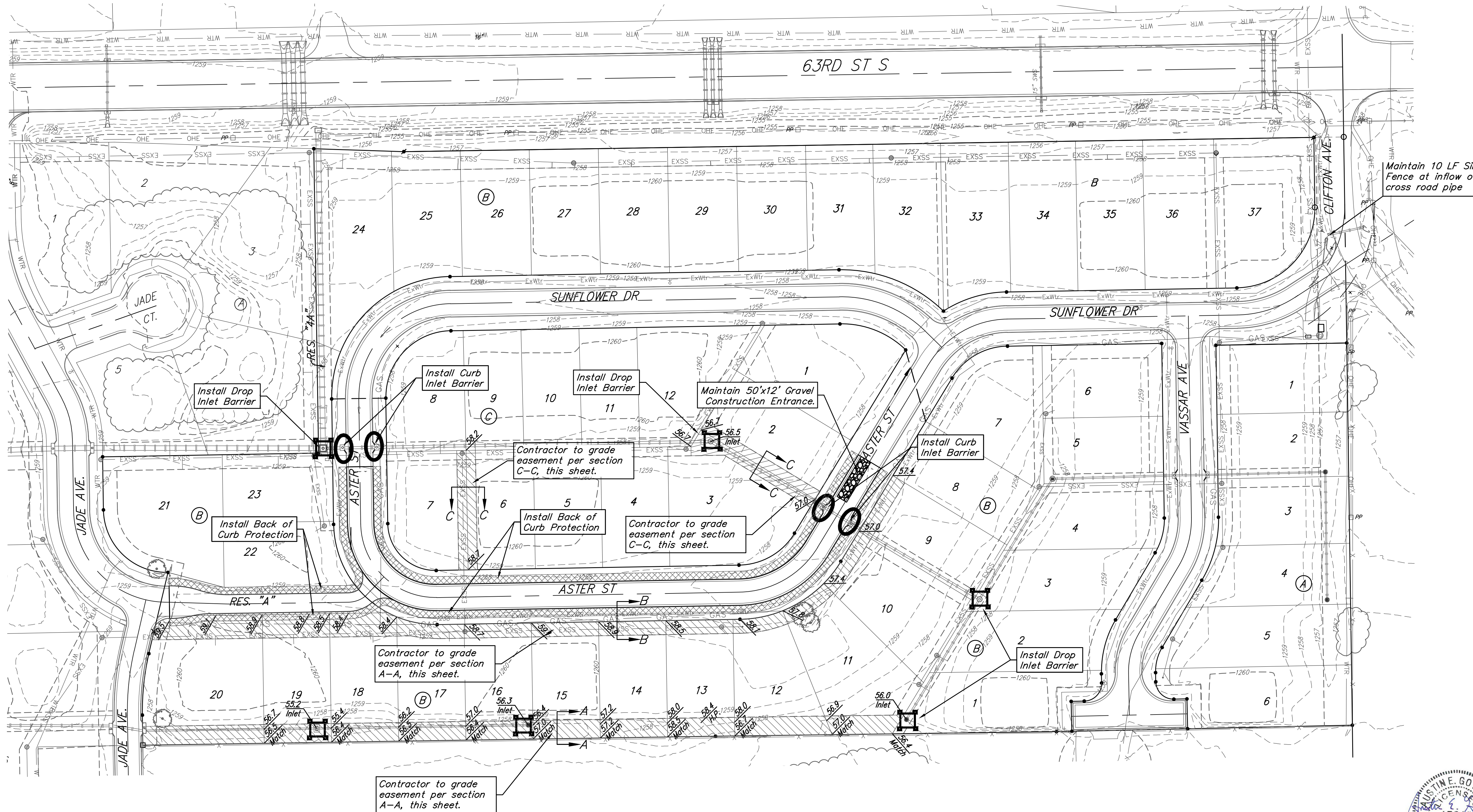
The Contractor shall 'straight' grade the easements between the elevations given. Where a callout designates 'Match', the Contractor will grade to the existing ground elevation.

Excess excavation from easement grading and from street construction shall be stockpiled on site at a location to be provided by the Engineer.

All cost to be included in the Lump Sum bid item "Easement Grading"



---1350--- Existing Grade



NOTES:
 Contractor shall make sure all erosion control is in place before project is accepted. This plan represents the minimum standard. Any additional erosion control measures shall be installed by the Contractor as needed.

All areas disturbed during construction shall be seeded, mulched, and fertilized as per Cover Sheet General Notes.

EROSION CONTROL PLAN LEGEND

- DROP INLET PROTECTION
- CURB INLET PROTECTION
- SILT FENCING
- BACK OF CURB PROTECTION

EROSION CONTROL MEASURE	INSTALL	MAINTAIN
CUT-OFF TRENCH (LF)	0	0
CONSTRUCTION ENTRANCE (EA)	1	0
CURB INLET BARRIER (EA)	4	0
DITCH CHECK (EA)	0	0
DROP INLET PROTECTION (EA)	6	0
BACK OF CURB PROTECTION (LF)	1,862	0
MULCH WATTLES (LF)	0	0
SILT FENCE (LF)	0	0
EROSION CONTROL MAT (SY)	0	0
MAINTAIN EROSION CONTROL BMP's (LS)	0	1

* ALL EXISTING BMPs INCLUDING CONSTRUCTION ENTRANCE, SEDIMENT BARRIERS, SILT FENCE, CUT-OFF TRENCH, AND EROSION CONTROL MAT SHALL BE MAINTAINED AND REPAIRED IF NECESSARY.

Baughman Vassar Addition - Phase III
EROSION CONTROL
 Street Improvements

Baughman Company, P.A. 315 Ellis St. Wichita, KS 67211 P 316-262-7271 F 316-262-0149
 ENGINEERING | SURVEYING | PLANNING | LANDSCAPE ARCHITECTURE

PROJECT NUMBER 472-85258	DESIGN AEG	DRAWN JAK
REVISIONS:	APPROVED	DATE 4/20/17
	SCALE Noted	SHEET

8 OF 18

