

## GENERAL NOTES:

- The Contractor shall comply with all applicable safety regulations. All construction shall be completed following current City Standard Specifications and Special Provisions.
- Contractor will be required to provide notice to utility companies a minimum of seventy-two (72) hours prior to any excavation, as follows:  
  
Kansas One-Call 687-2470  
  
The Contractor must notify the following in case of an emergency:  
  
AT&T 1-800-246-8464  
Black Hills Energy 1-800-694-8989  
City of Wichita Water 1-316-268-4555  
City of Wichita Sewer 1-316-268-4073  
City of Wichita Stormwater 1-316-268-4090  
City of Wichita Traffic 1-316-268-4034  
Cox Communications 1-888-249-3530  
Kansas Gas Service 1-888-482-4950  
Phillips 66 Pipeline 1-800-231-2566  
Westar Energy 1-800-544-4857
- Utility service lines, poles, etc. are to be adjusted as necessary by others prior to construction unless the plans specifically call for their adjustment by the Contractor or unless the plans specifically identify a utility to be adjusted by its owner during construction. Existing utilities and their location, as shown on the plans, represent the best information obtainable for design. The Contractor will be required to work around existing utilities within the Right-of-Way which do not conflict with proposed construction.
- Rubble from the removal of miscellaneous structures and excess excavation which is to be wasted shall be disposed of on sites to be provided by the Contractor. These sites shall be approved by the Engineer as to suitability, appearance and site location. Locations, in the opinion of the Engineer, that will leave an unsightly appearance will not be approved. All disposal sites must be approved by the Kansas Department of Health and Environment. Material either stockpiled or disposed of in a flood plain would require a Kansas State Board of Agriculture permit. Any material dumped in waters of the United States or wetlands is subject to U.S. Corps. of Engineers permitting regulations. Any material buried or stockpiled beyond approved construction limits would require additional archaeological investigations unless buried in a previously approved borrow location.
- Trees and shrubs in public Right-of-Way which are in direct conflict with proposed new construction shall be removed by the Contractor with the Engineer's approval. Trees and shrubs which are not in direct conflict with proposed new construction shall be saved and protected from damage.
- The Contractor shall give all property owners and/or tenants of developed property abutting the construction of this project a minimum of ten (10) days notice prior to start of construction.
- The Contractor shall be responsible for preserving property irons. The Contractor will be required to re-establish any property irons which are damaged or destroyed by his construction operations. Such irons shall be re-established by a licensed land surveyor in accordance with state laws.
- The Water Distribution Division shall field locate water valves one time during construction when requested by the Contractor. It shall be the Contractor's responsibility to preserve such field locations during the construction process. Water valves, valve boxes or fire hydrants damaged during construction shall be repaired by the Contractor at his own expense. Valve boxes and water meters within the project limits shall be adjusted to match field grades.+
- If traffic is impacted by construction, a traffic control plan must be submitted and approved by the City Traffic Engineer, Brian Coon at [traffic@wichita.gov](mailto:traffic@wichita.gov) before construction can begin. The Contractor shall be responsible for all traffic control measures to facilitate construction. All construction zone markings and signage shall conform to the latest version of the Manual on Uniform Traffic Control Devices (MUTCD) as published by the US Dept. of Transportation, Federal Highway Administration. All costs associated with construction markings and signage shall be the Contractors responsibility.
- All elevations shown are NAVD 88.

## SIGNALIZATION IMPROVEMENTS

to serve

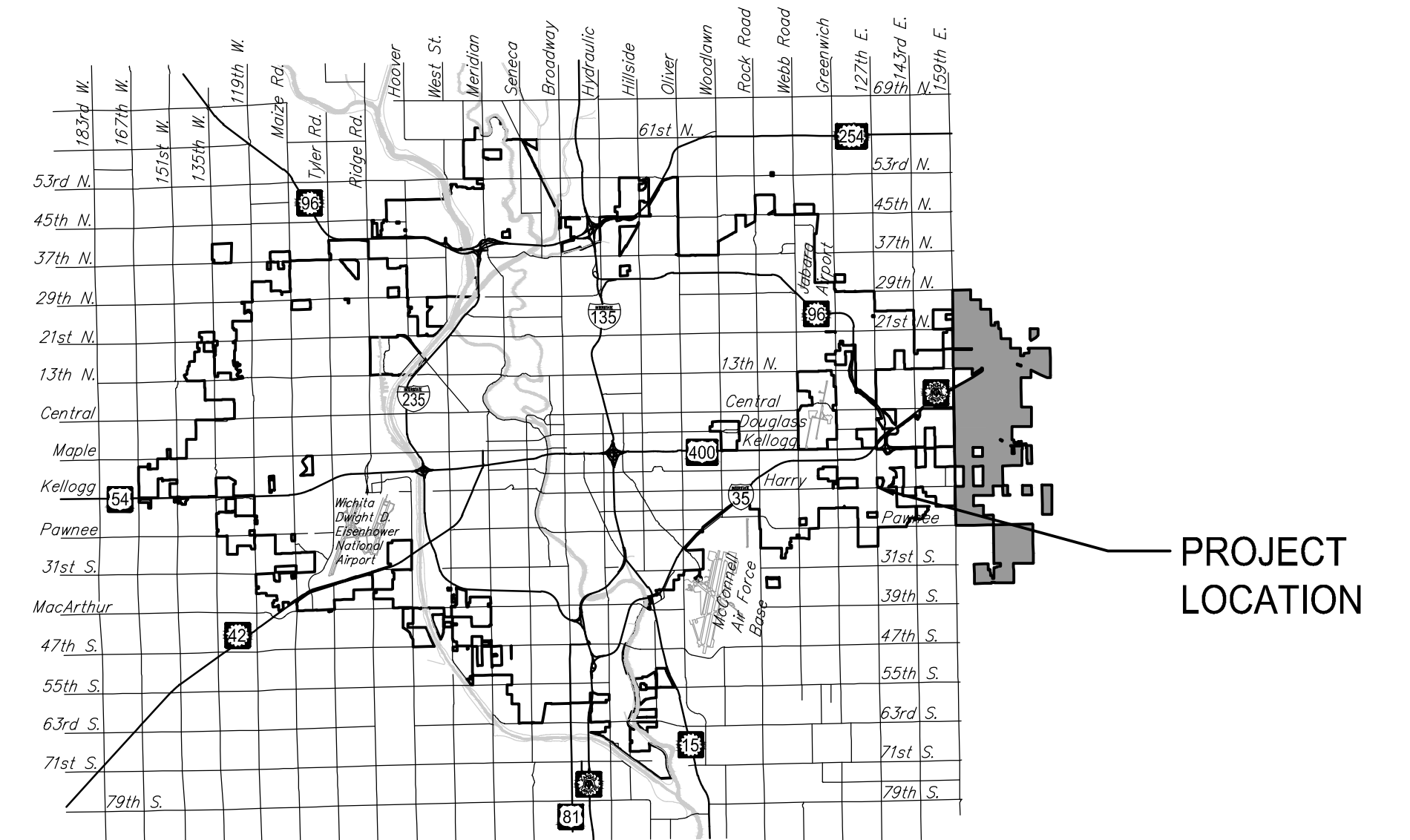
# Harry & 127th

## CITY OF WICHITA, KANSAS

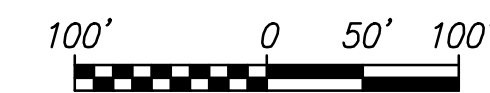
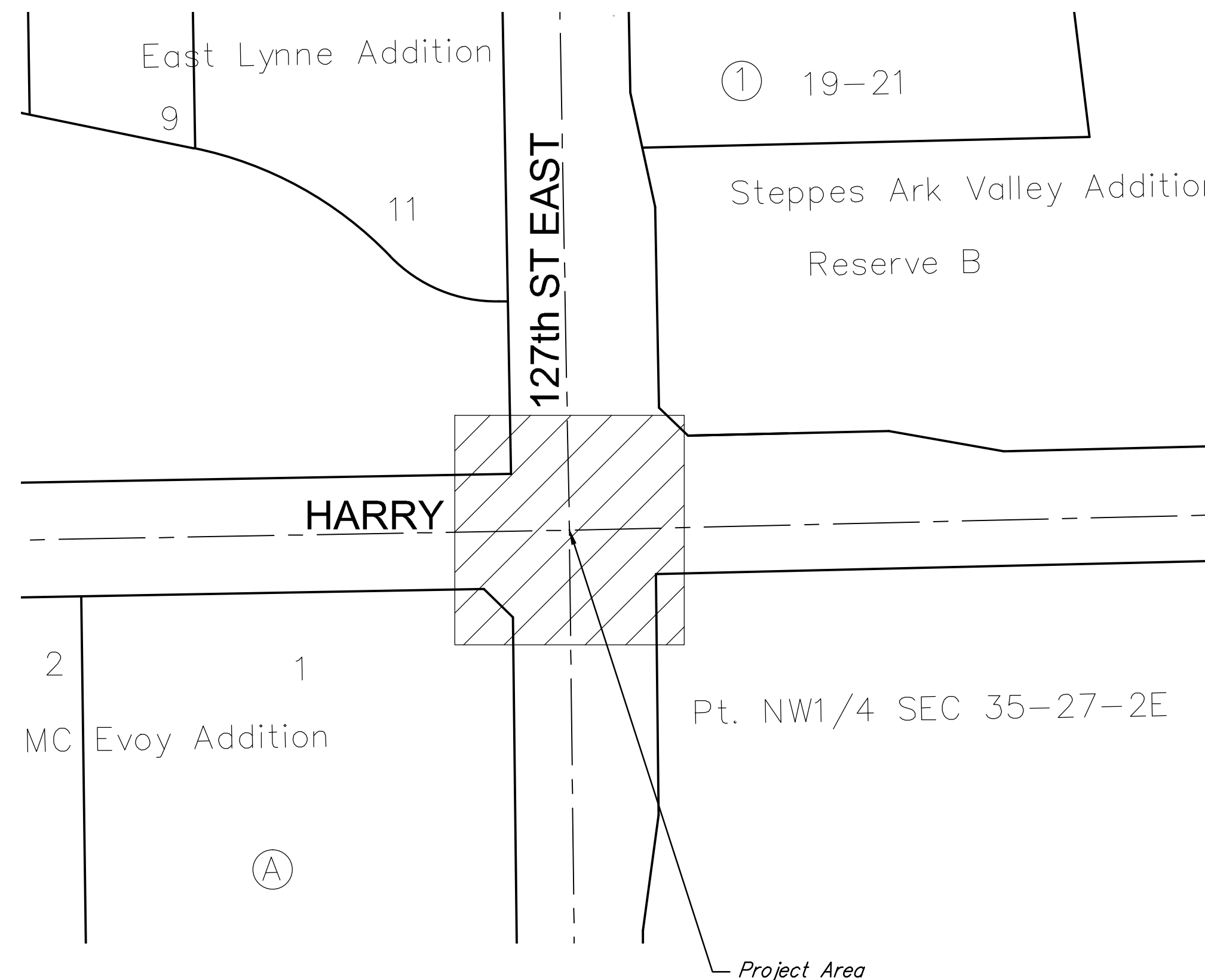
Gary Janzen, P.E. City Engineer  
Project Number 472-85337  
O.C.A. NO. 707118

- All areas disturbed during construction that will not be under proposed pavement shall be restored to match existing conditions.
- All existing pavement and curb and gutter within the construction limits shall be saw cut, full depth, to the lines shown on the plans, or to the nearest joint, and removed, unless otherwise noted. If removal limits are within three feet of a joint, remove to the joint.
- All traffic control devices in the work zone (including markings and signs) and their installation and maintenance shall comply with the latest edition of the Manual on Uniform Traffic Control Devices (MUTCD). All traffic control devices in the traveled way or clear zone shall be crashworthy (NCHRP Report 350 or MASH compliant).  
  
[http://safety.fhwa.dot.gov/roadway\\_dept/policy\\_guide/road\\_hardware/wzd](http://safety.fhwa.dot.gov/roadway_dept/policy_guide/road_hardware/wzd)
- All construction equipment, including vehicles, materials, and debris, shall be stored outside of the clear zone. Where this cannot be achieved the contractor shall place appropriate signs, object identifiers, and/or barricades in compliance with the MUTCD.
- Except when required for safety, traffic control shall not block any lanes or sidewalks when work is not being performed.

[http://safety.fhwa.dot.gov/roadway\\_dept/policy\\_guide/road\\_hardware/wzd](http://safety.fhwa.dot.gov/roadway_dept/policy_guide/road_hardware/wzd)



Vicinity Map



### BENCHMARK

- "□" CUT ON TOP OF CONCRETE WALL 145'+/- WEST AND 43'+/- NORTH OF THE SW CORNER OF SEC 26 T27S R2E OF THE 6TH PM, SEDGWICK COUNTY, KS  
  
ELEVATION 1316.36 NAVD88 G12A
- "□" CUT ON TOP OF CONCRETE WALL 97'+/- EAST AND 49'+/- NORTH OF THE SW CORNER OF SEC 26 T27S R2E OF THE 6TH PM, SEDGWICK COUNTY, KS  
  
ELEVATION 1316.36 NAVD88 G12A

### Sheet Index

- TITLE SHEET
- SIGNAL PLAN
- WIRING PLAN & QUANTITIES
- SIDEWALK ELEVATIONS
- STEEL SIGNAL POLE ASSEMBLY STANDARD DETAIL
- POWER POLE AND SPAN POLE ASSEMBLY STANDARD DETAIL
- SERVICE BOX AND CONTROLLER PAD STANDARD DETAIL
- SIGNAL PEDESTAL & BASE WITH ADA PUSH BUTTON STANDARD DETAIL
- WHEELCHAIR RAMP WITH DETECTABLE WARNING STANDARD DETAIL

MARCH 2017

PLANS PREPARED BY



# RUGGLES & BOHM

ENGINEERING | SURVEYING | LANDSCAPE ARCHITECTURE | GOVERNMENT

924 NORTH MAIN WICHITA, KANSAS 67203 P (316) 264-8008 F (316) 264-4621  
WWW.RBKANSAS.COM 4811T

