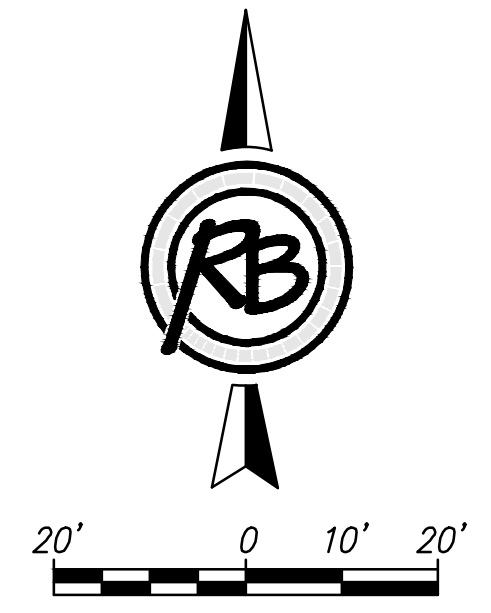
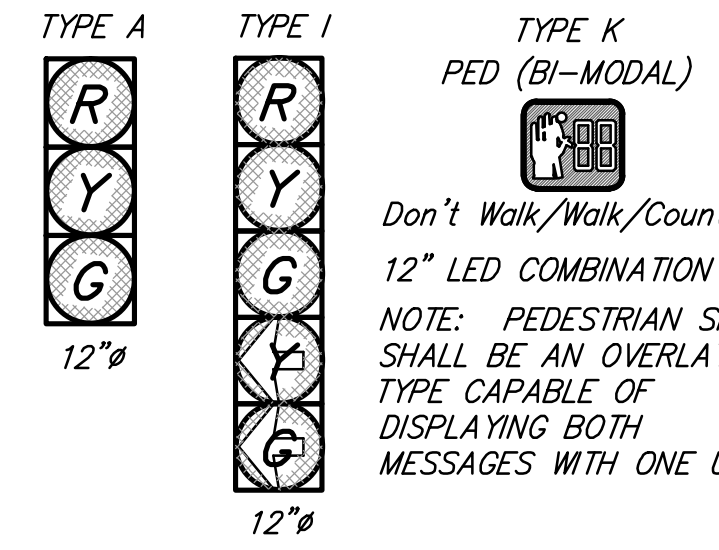


MISCELLANEOUS NOTES

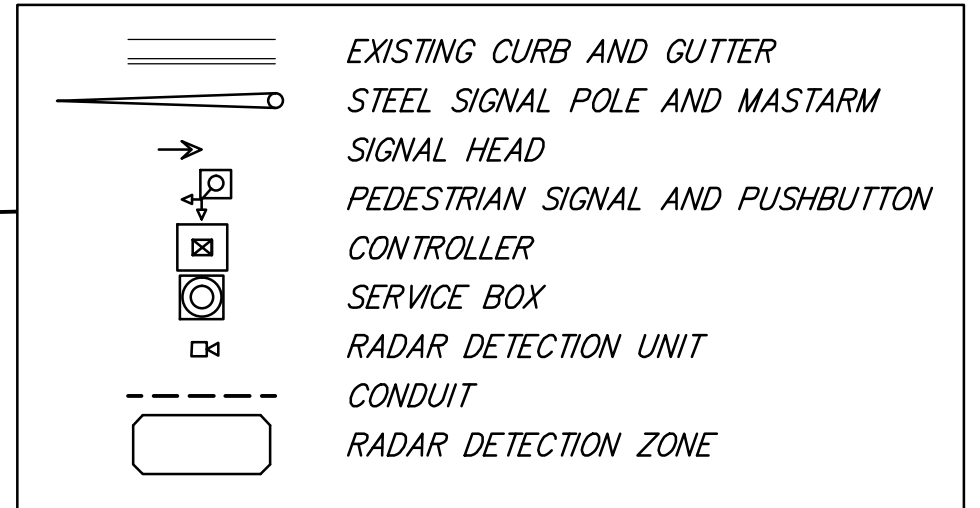
- REMOVE EXISTING STRIPING AND PAVEMENT MARKINGS AS NEEDED TO INSTALL 24" WHITE STOP BARS. SUBSIDIARY TO PAVEMENT MARKINGS.
- COVER EXISTING STOP BARS WITH BLACK PAINT TO BE SUBSIDIARY TO PAVEMENT MARKINGS
- ALL BASES, CAPS AND PADS TO BE FLUSH WITH ADJACENT GRADE OR CONCRETE
- SIDEWALK REMOVALS FOR THE SW AND NW CORNERS OF THE INTERSECTION TO MATCH EXISTING ELEVATIONS AND GRADES
- EXISTING STOP SIGNS WILL BE REMOVED BY THE CITY OF WICHITA. CONTACT THE CITY OF WICHITA, DOUG JONES, 316-268-4031 24 HOURS IN ADVANCE OF FLASHING SIGNALS.

NOTE: ALL SIGNALS SHALL BE L.E.D.

SIGNAL FACE TYPES



LEGEND



TRAFFIC SIGNAL HEAD SUMMARY

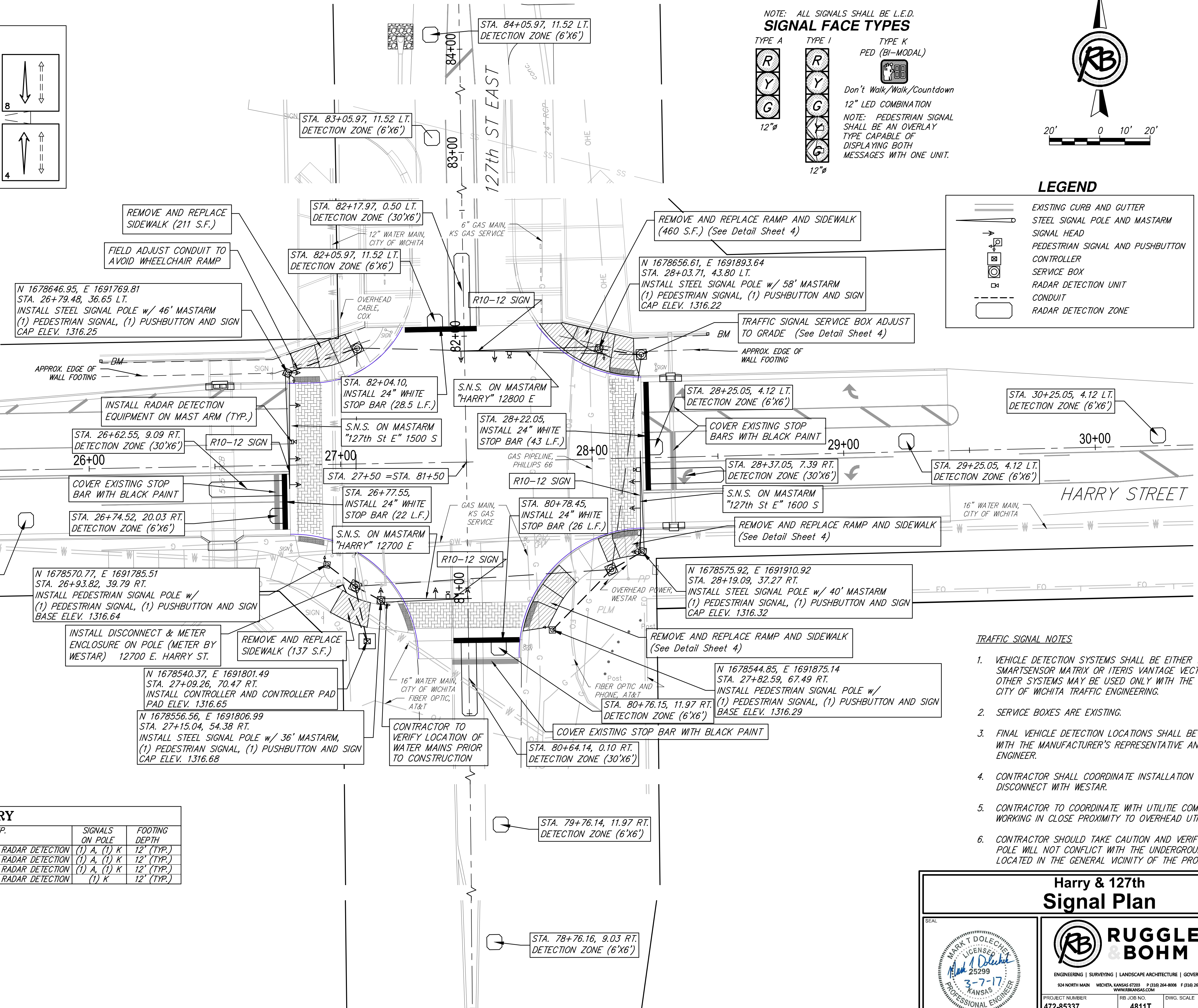
SIGNAL PHASE	TYPE	MOUNTING BRACKET	QUANTITY
1	I	TYPE I	1
2	A	TYPE I	1
2	A	TYPE III	1
3	I	TYPE I	1
4	A	TYPE I	1
5	I	TYPE I	1
6	A	TYPE I	2
6	A	TYPE III	1
7	I	TYPE I	1
8	A	TYPE I	1
8	A	TYPE III	1
2P	K	TYPE II	2
4-8P	K	TYPE II	4

TRAFFIC SIGNAL POLE SUMMARY

STATION	TYPE	ARM LENGTH (LF)	SIGNALS ON ARM	OTHER EQUIP. ON ARM	SIGNALS ON POLE	FOOTING DEPTH
26+79.48, 36.65 Lt.	STEEL	46	(2) A, (1) I	SNS, R10-12, RADAR DETECTION	(1) A, (1) K	12" (TYP.)
27+15.04, 54.38 Rt.	STEEL	36	(1) A, (1) I	SNS, R10-12, RADAR DETECTION	(1) A, (1) K	12" (TYP.)
28+19.09, 37.27 Rt.	STEEL	40	(1) A, (1) I	SNS, R10-12, RADAR DETECTION	(1) A, (1) K	12" (TYP.)
28+03.71, 43.80 Lt.	STEEL	58	(1) A, (1) I	SNS, R10-12, RADAR DETECTION	(1) K	12" (TYP.)

TRAFFIC SIGNAL PEDESTAL SUMMARY

STATION	TYPE	SIGNALS ON POLE
26+93.82, 39.79 Rt.	STEEL	(1) K
27+82.59, 67.49 Rt.	STEEL	(1) K



TRAFFIC SIGNAL NOTES

- VEHICLE DETECTION SYSTEMS SHALL BE EITHER WAVETRONIX SMARTSENSOR MATRIX OR ITERIS VANTAGE VECTOR SYSTEMS. OTHER SYSTEMS MAY BE USED ONLY WITH THE APPROVAL OF CITY OF WICHITA TRAFFIC ENGINEERING.
- SERVICE BOXES ARE EXISTING.
- FINAL VEHICLE DETECTION LOCATIONS SHALL BE COORDINATED WITH THE MANUFACTURER'S REPRESENTATIVE AND THE FIELD ENGINEER.
- CONTRACTOR SHALL COORDINATE INSTALLATION OF METER AND DISCONNECT WITH WESTAR.
- CONTRACTOR TO COORDINATE WITH UTILITE COMPANIES WHEN WORKING IN CLOSE PROXIMITY TO OVERHEAD UTILITIES
- CONTRACTOR SHOULD TAKE CAUTION AND VERIFY THE NW SIGNAL POLE WILL NOT CONFLICT WITH THE UNDERGROUND WATER MAIN LOCATED IN THE GENERAL VICINITY OF THE PROPOSED POLE

Harry & 127th Signal Plan

			DATE 3-7-2017
	ENGINEERING SURVEYING LANDSCAPE ARCHITECTURE GOVERNMENT 924 NORTH MAIN WICHITA, KANSAS 67203 P (316) 264-8008 F (316) 264-4621 WWW.RUGGLESANDBOHM.COM		DESIGN MTD DRAWN MTD REVIEW KWL SHEET 2 OF 9
PROJECT NUMBER 472-85337	RB JOB NO. 4811T	DWG. SCALE ...	(c) Copyright 2015, Ruggles & Bohm, P.A.