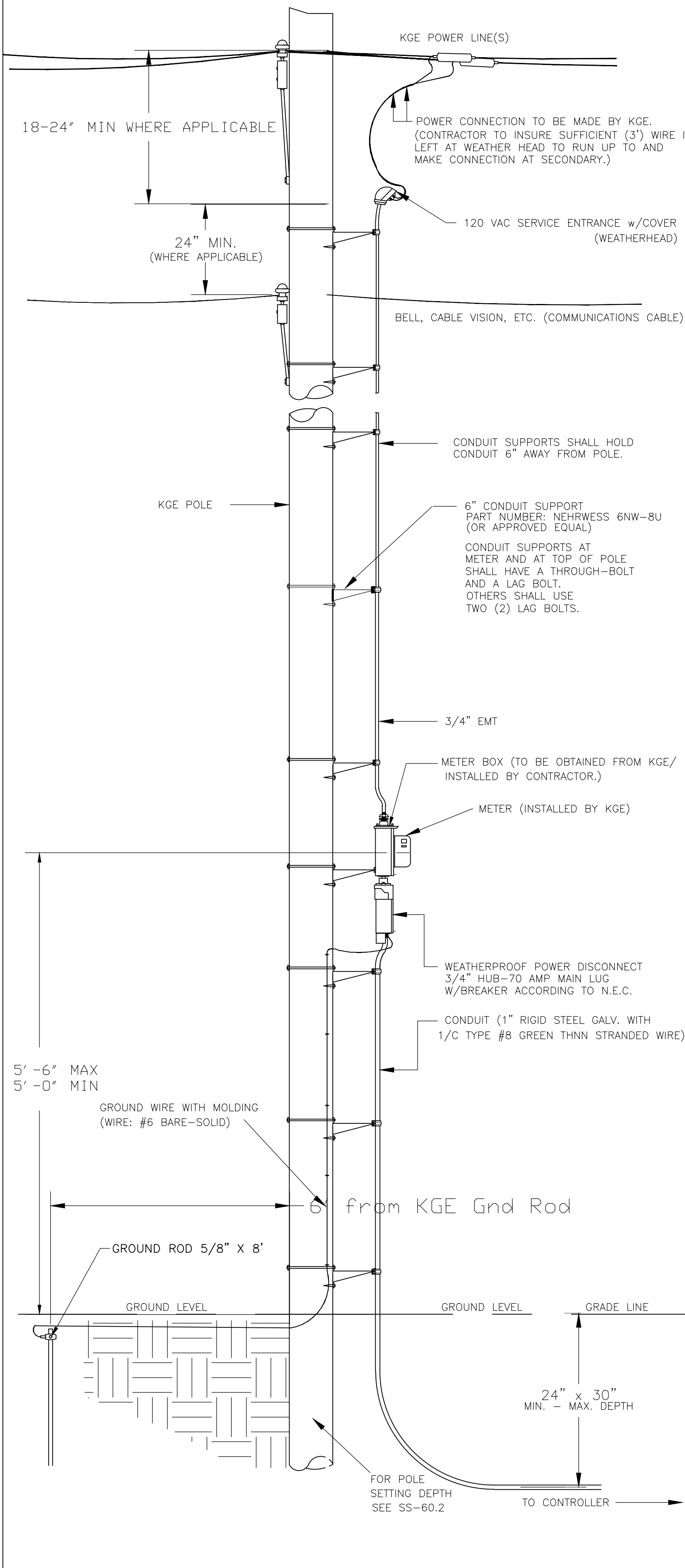
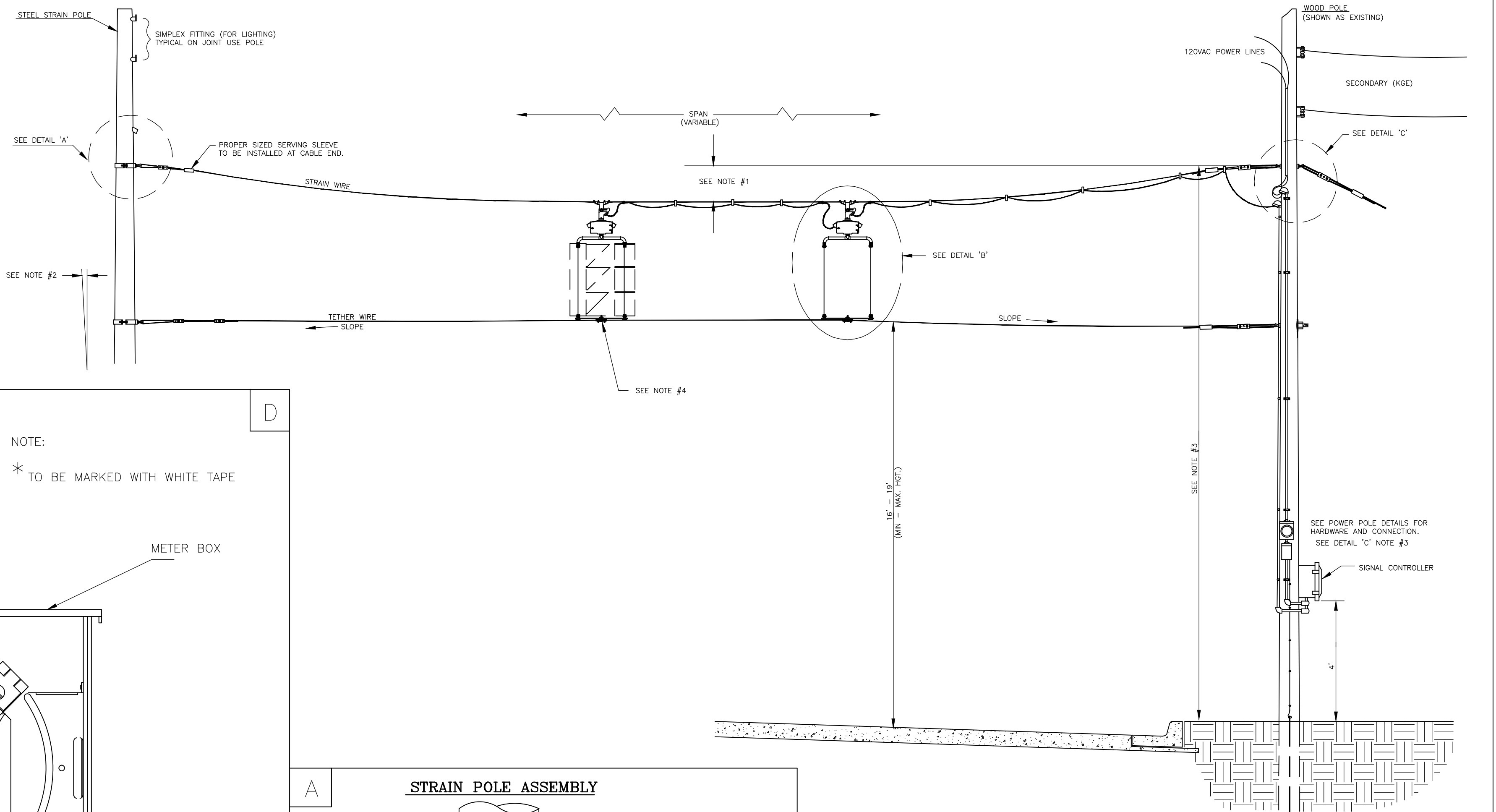


**POWER POLE DETAILS**

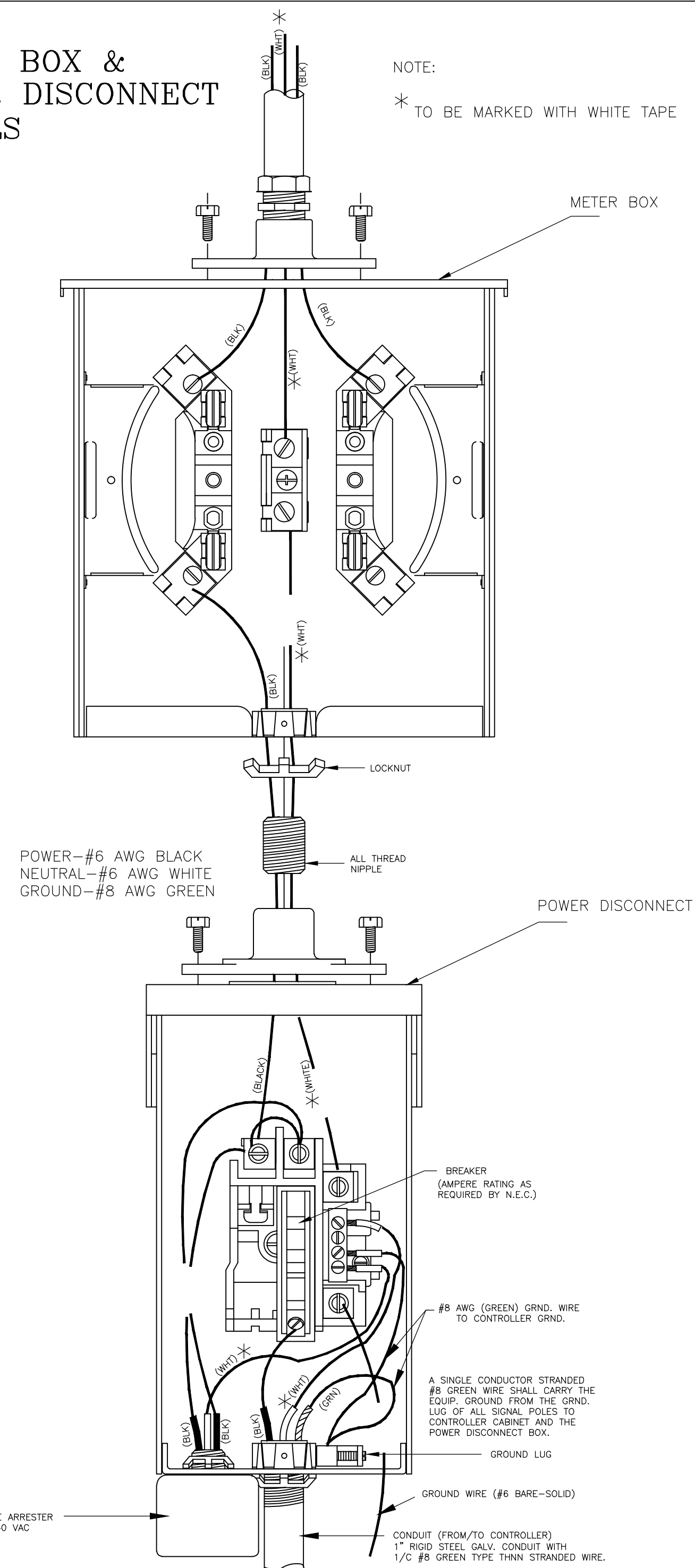


**SPANWIRE ASSEMBLY DETAILS**

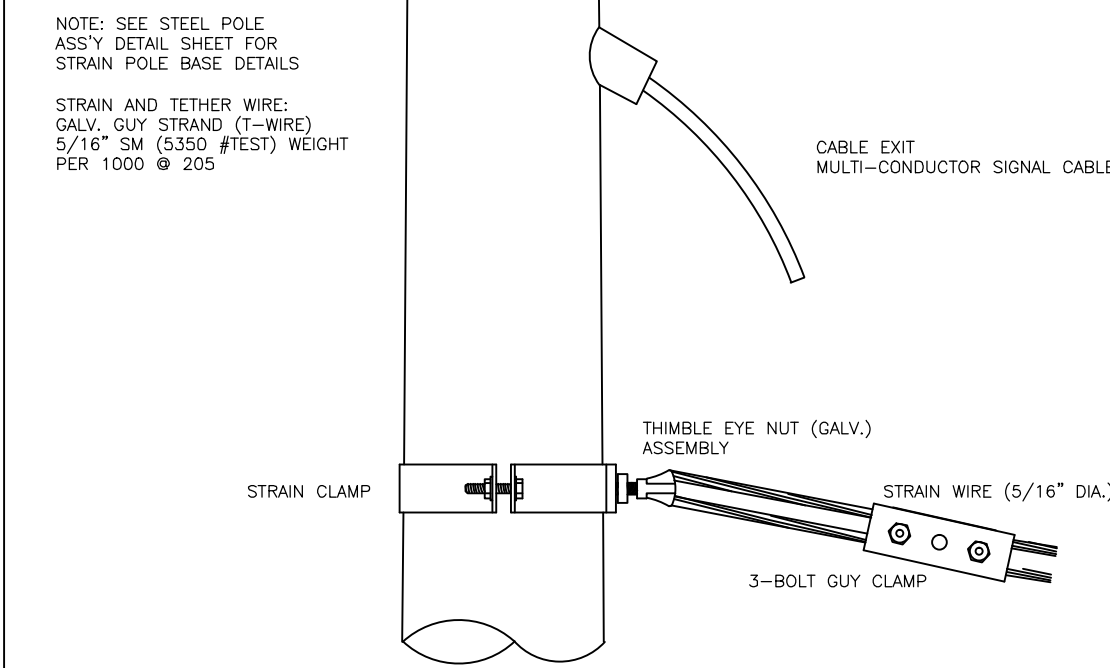
- MAX. SAG = 5% OF SPAN.
- STANDARD BACKRAKE = 1.5'
- HEIGHT OF STRAIN WIRE HOOK-UP TO BE DETERMINED BY FIELD ENGINEER. TRAFFIC SIGNAL CABLE TO BE SECURED TO STRAIN (SPAN) WIRE WEATHERABLE NYLON CABLE HANGERS (12" CTR.) DETAIL 'B'
- TETHER CLAMP TO BE DESIGNED TO RELEASE UNDER 'HIGH WIND LOAD' TO PERMIT SIGNAL 'FREE SWING'.



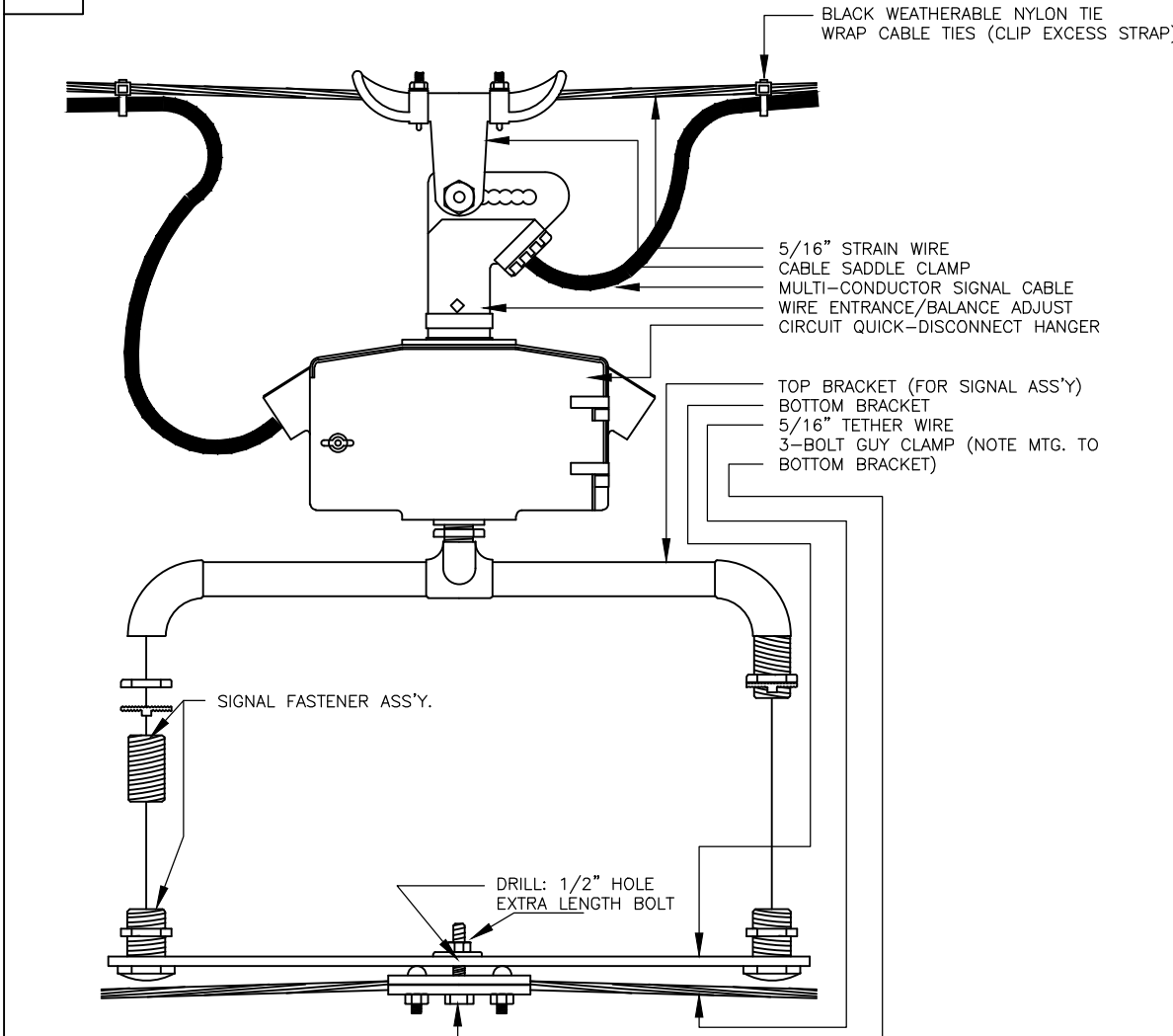
**METER BOX & POWER DISCONNECT DETAILS**



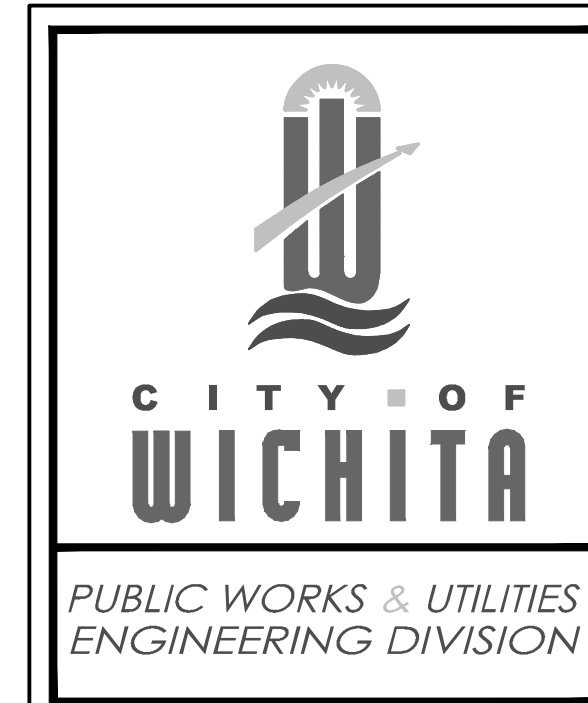
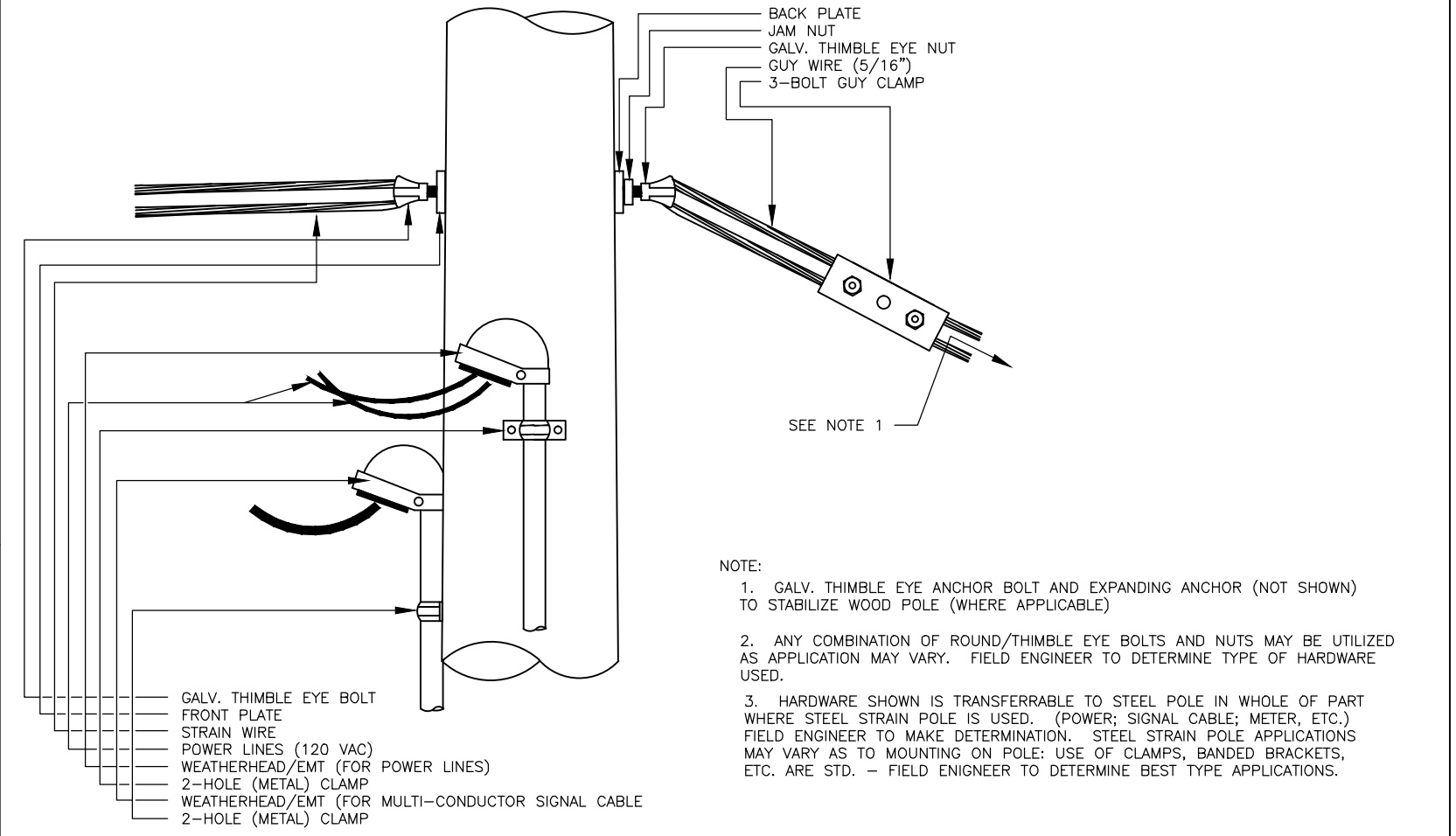
**A STRAIN POLE ASSEMBLY**



**B SIGNAL BRACKET ASSEMBLY DETAILS**



**C WOOD POLE ASSEMBLY DETAILS KGE POLE EXCLUDED**



<b>POWER POLE AND SPAN POLE ASSEMBLY DETAILS</b>		
TRAFFIC ENGINEER <b>PAUL GUNZELMAN, P.E.</b>		
PROJECT NUMBER <b>472-85337</b>	OCA NUMBER <b>707118</b>	DATE <b>11/2003</b>
CITY ENGINEER'S OFFICE CITY HALL - SEVENTH FLOOR 455 NORTH MAIN STREET WICHITA, KANSAS 67202-1620 (316) 268-4501		SHEET <b>6</b>
		<b>9</b>