

SANITARY SEWER RELOCATION PROJECT

AT

2514 W. DOUGLAS

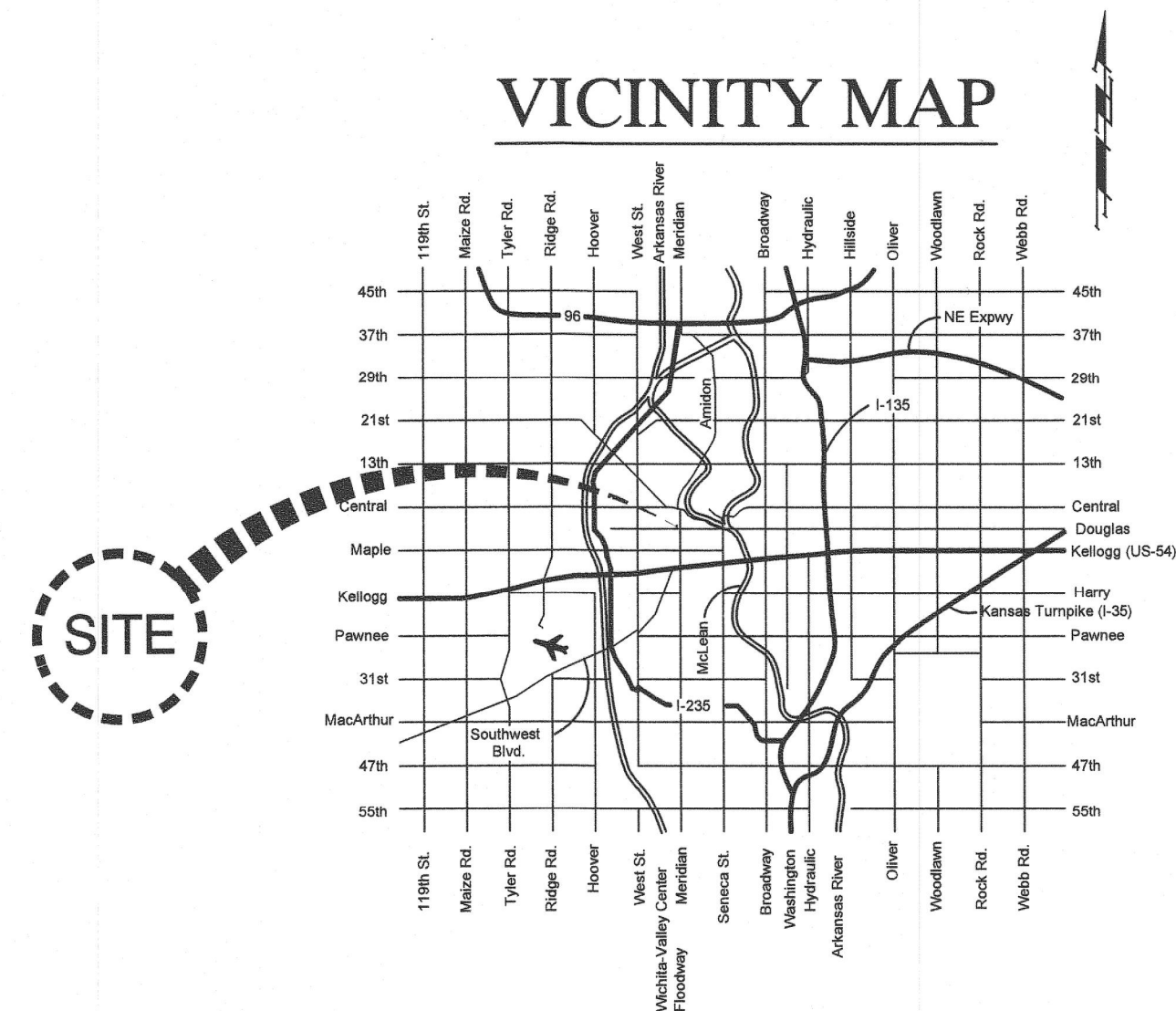
FOR
**THE CITY OF WICHITA,
 SEDGWICK COUNTY, KANSAS**
 Gary Janzen, P.E., City Engineer

City Project No. - 468-85128
 O.C.A. No. - 620851

November 2016

Index

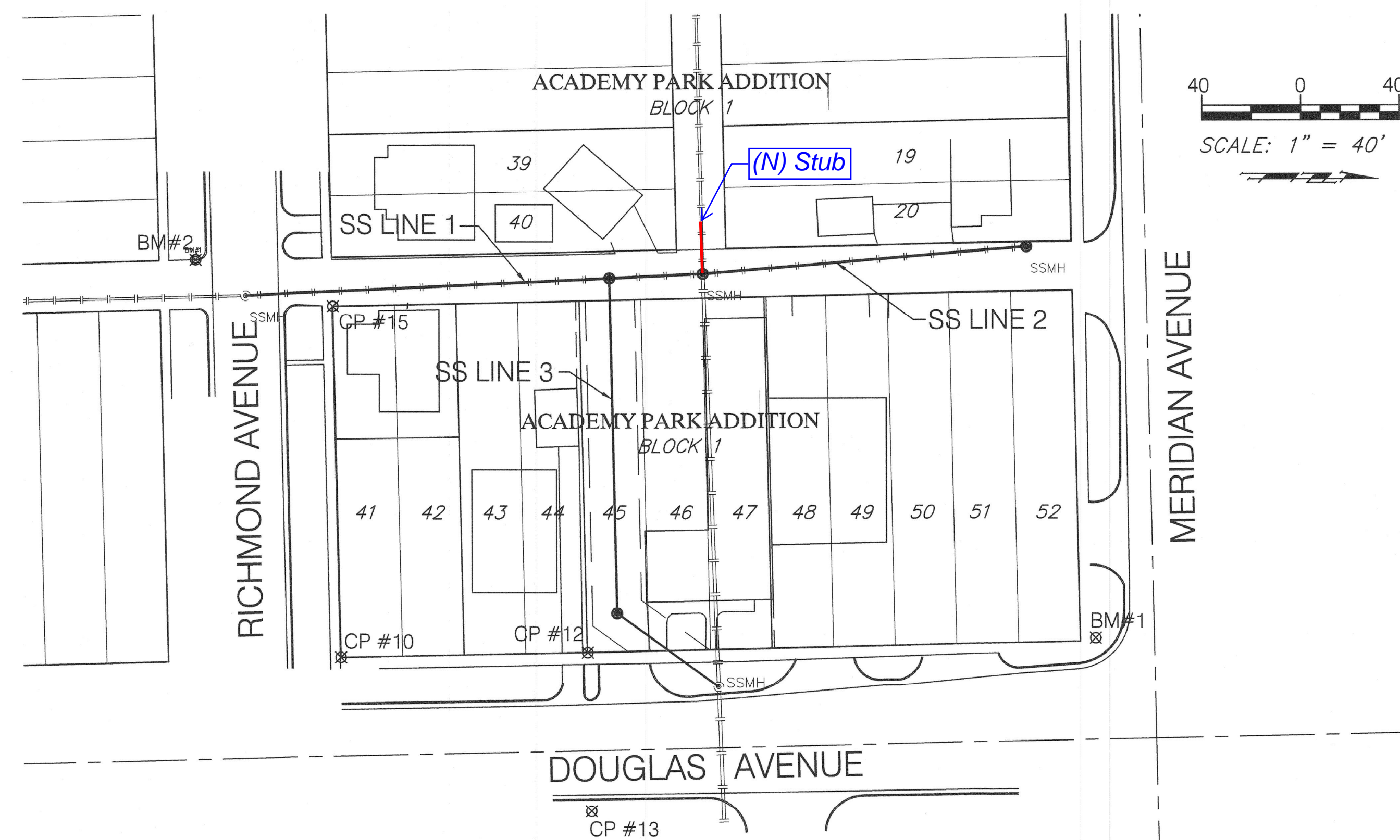
- 1 Title Sheet
- 2 Notepage
- 3 Sanitary Sewer Line 1
- 4 Sanitary Sewer Line 2
- 5-6 Standard Details
- 7-11 Erosion Control Details



Dondlinger & Sons - Contractor
J. Brand - City of Wichita, Field Project Engineer
T. Dvorak - City of Wichita, Inspector
 Stub
 As-built
 Release Date: 05/23/2017
 pdf: apr 05/23/2017

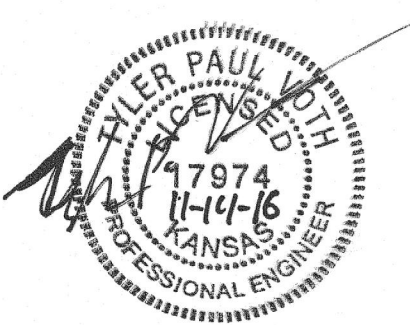
BENCHMARKS:

- BM #1 - Chiseled "X" on the Southwest Corner of the Concrete Lid of the Traffic Manhole in the Northwest Corner of Douglas & Meridian.
Elev. = 1302.73 (NAVD 88)
- BM #2 - Chiseled "□" on the Top of Curb at the West End of the North Side Return of the Alley on the West Side of Richmond.
Elev. = 1302.11 (NAVD 88)



CONTROL POINTS:

- CP #10 - 1/2" Iron Property Corner
N-84717.43
E-38644.06
- CP #12 - V-Notch
N-84719.34
E-38744.19
- CP #13 - 60d Nail
N-84654.92
E-38745.68
- CP #15 - 1/2" Iron Property Corner
N-84860.10
E-38641.02

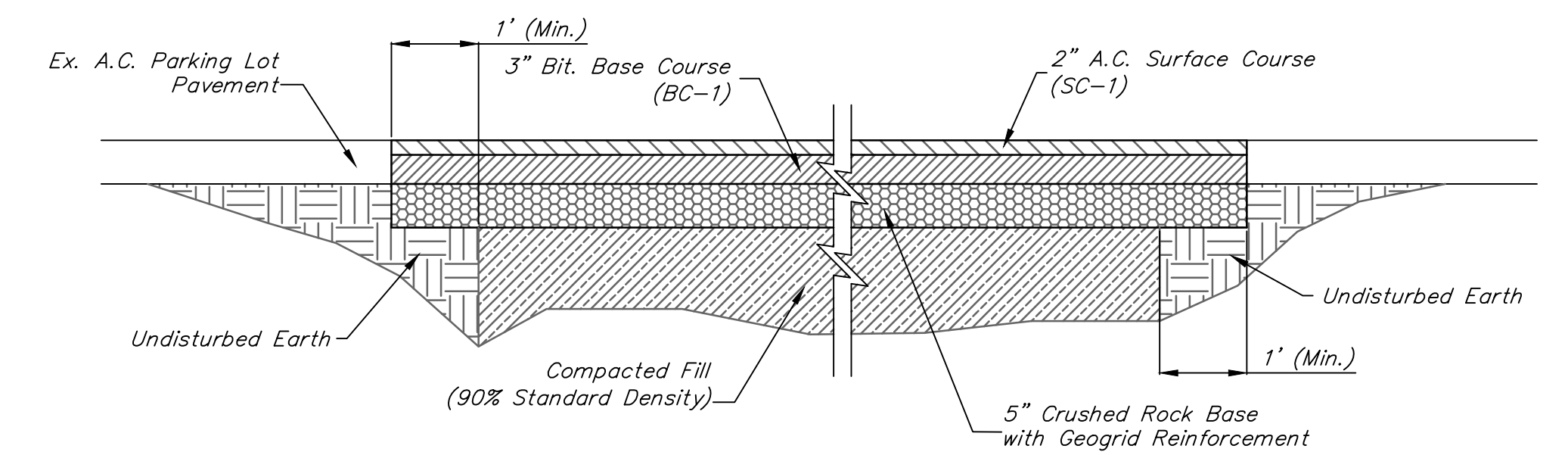


GENERAL NOTES

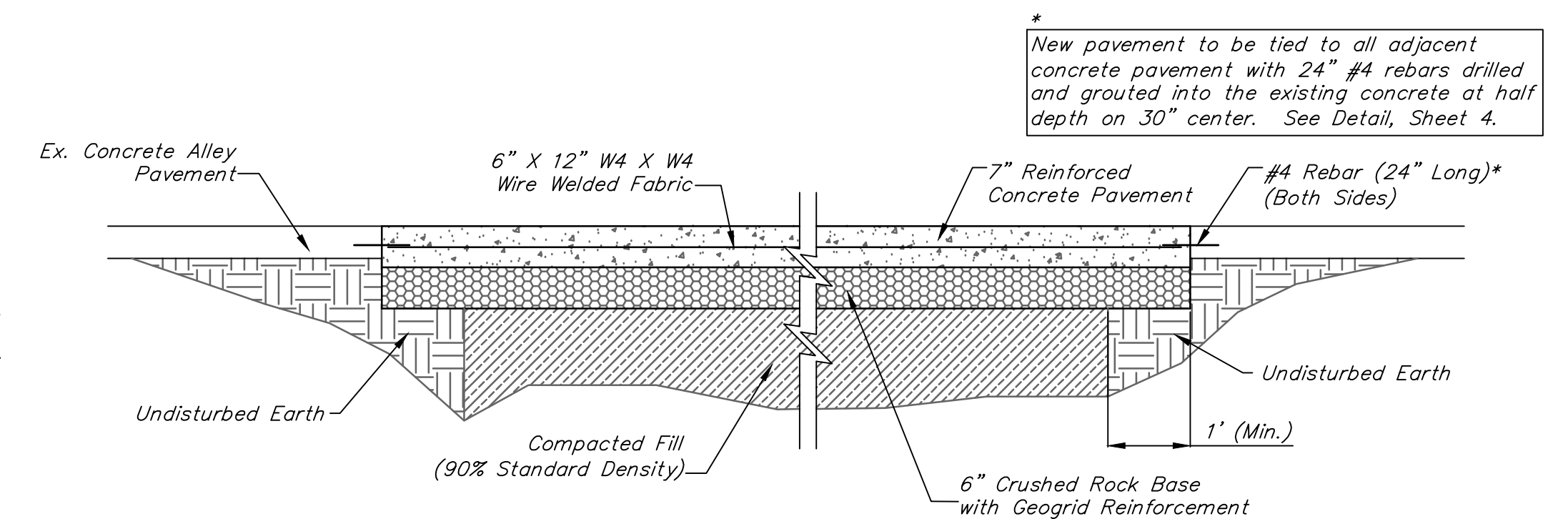
- The Contractor shall give all property owners and/or tenants of developed property abutting the project limits a minimum of ten (10) days advance notice prior to start of construction. See Project Special Provisions for additional notification requirements.
- Contractor will be required to provide a minimum advance notice of seventy-two (72) hours to utility companies prior to excavation or working adjacent to utilities. Kansas One-Call 687-2470
- Existing utilities and their locations, as shown on the plan, represent the best information obtainable at the time of design. The Contractor shall be aware that construction will occur in close proximity to existing utilities, and any conflicts with such utilities shall be reported to the Engineer. The Contractor should also be aware that some utility lines within the Project corridor may have been abandoned in place as new lines are installed. Contractor shall be responsible for notifying the affected utility to determine the status of said lines.
- The Water Department shall field locate water valves one time during construction when requested by the Contractor. It shall be the Contractor's responsibility to preserve such field locations during the construction process. Water valves, water valve boxes or fire hydrant damaged during construction shall be repaired by the Contractor at his own expense.
- All project waste including any trees, milled asphalt, rubble from miscellaneous structures, abandoned pipes, excess excavation & etc. shall be disposed of on sites to be provided by the Contractor. These sites shall be approved by the Engineer as to suitability, appearance and site location. Locations that, in the opinion of the Engineer, will leave an unsightly appearance will not be approved. All disposal sites must be approved by the Kansas Department of Health and Environment. Material either stockpiled or disposed of in a flood plain would require a Kansas State Board of Agriculture permit. Any material dumped in waters of the United States or wetlands is subject to U.S. Corps. of Engineers permitting regulations. Any material buried or stockpiled beyond approved construction limits would require additional archaeological investigations unless buried in a previously approved borrow location.
- Contractor shall be aware that some gas & telephone lines within the project corridor may have been abandoned in place as new lines are installed. The Contractor shall be responsible for contacting the appropriate owners to determine the status of said lines.
- The Contractor shall be made aware that he will be working in close proximity of existing utilities. Any conflicts with such utilities shall be reported to the Engineer. The Contractor shall coordinate the construction of this project with relocation of any existing utilities by the utility companies.
- Prior to bidding the project, each bidder shall visit the site and satisfy himself of surface & subsurface conditions. Each bidder shall also fully inform himself as to the extent of the scope of work to be performed. Each bidder shall also be aware that no additional compensation will be awarded for extra work that should have been evaluated prior to bidding.
- Irons and monuments found are shown on the Plans. The Contractor shall be responsible for notifying the Engineer prior to excavation or clearing operations that will endanger said irons so that accurate ties can be determined for resetting. The Contractor shall be responsible for replacing shown property irons that are damaged or removed during construction. The Contractor shall procure a licensed Land Surveyor to locate and re-install the property iron.
- The Contractor shall be responsible for implementing erosion control methods during construction to prevent unnecessary silt/sediment discharge through downstream properties and/or storm sewer systems. The Contractor install and maintain erosion controls as directed by the Engineer. These controls may include, but not limited to: hay bales; silt fences, temporary seeding, Excelsior I Erosion Control Blanket (Curlax), or approved equal, or other controls necessary to inhibit sediment runoff during construction.
- Sewer Service shall not be interrupted throughout the length of the Project. The Contractor shall be responsible for maintaining continuous sewage flows. Cost for by-pass pumping at all sewer crossings shall be SUBSIDIARY to other items in the Project.
- The Contractor shall not start work on the Project until the Project Inspector is assigned and is present on site. Any work done without inspection will be required to be uncovered for inspection. Staking and inspection for this Project will be the responsibility of the City of Wichita.

- The Contractor shall comply with all applicable safety regulations and City of Wichita Specifications and Standards.
- The Contractor shall be responsible for all traffic control measures to facilitate construction. All Construction Zone markings and signage shall conform to the latest version of the Manual on Uniform Traffic Control Devices (MUTCD) as published by the US Dept. of Transportation, Federal Highway Administration. All costs associated with construction markings and signage shall be SUBSIDIARY to the lump sum Bid Item "Traffic Control".
- The Contractor shall protect utility lines that cross or abut the Project corridor. For larger lines, the Contractor's method of supporting the utility structure shall be provided to the Engineer, as well as the affected Utility Company's representative for review and approval. Any shutdown of a utility line that may be required by construction of this Project shall be coordinated with the said affected utility.
- Adjacent Buildings, Structures, Parking Lots, Driveways, etc. other than those shown for replacement shall be protected from damage during construction of this Project.
- Trees that require trimming for the Project construction shall not be done with a back hoe, but only by approved methods concurrent with standard tree trimming methods. All Tree Trimming Operations shall be considered SUBSIDIARY to "Site Clearing" bid item.
- A full depth saw cut of the existing surface courses or the existing total pavement thickness shall be provided at the locations where proposed construction abuts an existing surface course or pavement for which partial removal of that surface or pavement is required. Sawed joint to facilitate removal within three (3) feet of existing joints will not be permitted and for such instances the limits of removal shall extend to the existing joint. Such saw cuts will not be paid for directly and this cost shall be considered SUBSIDIARY to the pavement removal.
- All Elevations shown are based on NAVD 88 Datum.
- The proposed SS Lines shall be backfilled with sand, flushed and vibrated, from the top of the improved bedding to within 2' below the bottom of the rock base or finished grade when not under pavement. Cost to be SUBSIDIARY to the Bid Item "Fill, Sand (Flushed & Vibrated)".
- Existing Power & Light poles may require bracing or removal/replacement during certain phases of the Project. The Contractor shall be responsible for coordinating the pole bracing with Randy Truitt with Westar at 261-6521 at least 3 weeks prior to beginning construction.
- All existing sanitary service connections that are active shall be reconnected to the new sewer line. To be paid as measured quantity bid item "Service Line Reconnections." Contractor is to confirm that all buildings that are being served will be served during and after construction and that any service found is dead before abandoning the connection.
- The existing gates at 2514 W. Douglas shall remain in working order throughout the project and shall be able to be locked at the end of each day. The contractor shall coordinate the locking and unlocking of the gates with Doug Cotter, 721-5655. All cost associated with this work shall be SUBSIDIARY to the Lump Sum Bid Item "Site Restoration".
- The proposed manholes that are to be installed with this project shall be lined with a liner from the City of Wichita's Approved Material List.
- The Contractor shall phase the construction of the sanitary sewer through the parking lot of the business at 2514 W. Douglas so that only half of the pavement is removed at one time. The Contractor shall backfill and repave the parking lot to provide access through either the north or south gate before removing the pavement on the other half of the parking lot.
- TRAFFIC CONTROL:**
One lane of traffic in each direction must be maintained on Douglas Avenue during construction of the sanitary sewer line. The Alleyways & Richmond Ave. can be closed during construction of the sewer. The Contractor shall provide, erect, and maintain traffic control devices in accordance with the Manual on Uniform Traffic Control Devices (M.U.T.C.D) as shown on the Traffic Control plans and subject to the Engineer's approval. Access to Businesses shall be maintained at all times.

RECAPITULATION OF QUANTITIES		
ITEM	QUANTITY TOTAL	UNIT
LUMP SUM BID ITEMS - SANITARY SEWER		
SITE CLEARING	1	Lump Sum
SITE RESTORATION	1	Lump Sum
SODDING	1	Lump Sum
REMOVAL OF EXISTING STRUCTURES (Includes Pipe, Manholes, etc.)	1	Lump Sum
MEASURED QUANTITY BID ITEMS - SANITARY SEWER		
PIPE, SS 8"	132	Ft.
PIPE, SS 10"	148	Ft.
PIPE, SS 12"	20	Ft.
PIPE, SS 15"	226	Ft.
MH, SHALLOW SS (4')	1	Each
MH, STANDARD SS (4') (Lined)	3	Each
FILL, SAND (Flushed & Vibrated)	526	Ft.
AIR TESTING, SS PIPE	526	Ft.
PIPE ABANDONED IN PLACE	169	Ft.
BYPASS PUMPING	1	Lump Sum
LINING OF EXISTING MANHOLE	1	Each
REPLACE RING & COVER	2	Each
SERVICE LINE RECONNECTIONS (4")	3	Each
SERVICE LINE RECONNECTIONS (6")	2	Each
LUMP SUM BID ITEMS - TRAFFIC		
TRAFFIC CONTROL	1	Lump Sum
MEASURED QUANTITY BID ITEMS - PAVING		
CONCRETE ALLEY PAVEMENT REMOVED AND REPLACED	226	S.Y.
ASPHALT PARKING LOT PAVEMENT REMOVED AND REPLACED	100	S.Y.
SIDEWALK REMOVED & REPLACED	19	S.Y.
AC PAVEMENT, 6" (Temporary)	50	S.Y.
MEASURED QUANTITY BID ITEMS - EROSION CONTROL		
BMP, CURB INLET PROTECTION	2	Each
BMP, BACK OF CURB PROTECTION	80	Ft.



A.C. PARKING LOT TYPICAL SECTION



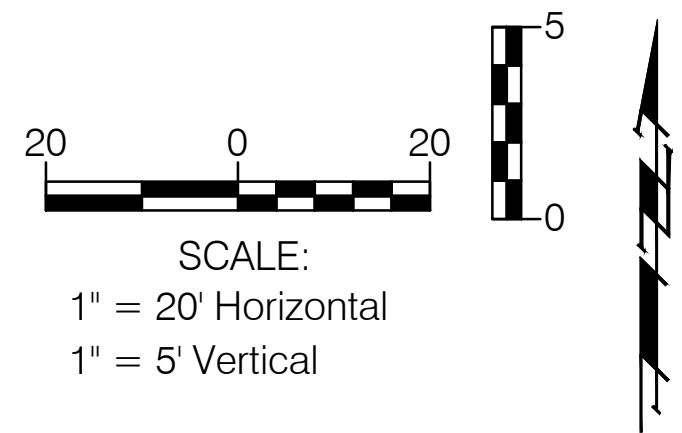
REINF. CONCRETE ALLEY TYPICAL SECTION

* New pavement to be tied to all adjacent concrete pavement with 24" #4 rebars drilled and grouted into the existing concrete at half depth on 30" center. See Detail, Sheet 4.

LIST OF UTILITY COMPANIES

TYPE	OWNER	CONTACT	TELEPHONE	(ALT.)
Locator Service	Kansas One-Call		687-2470	800-344-7233
TV	Cox Communications (Cable)	James Walburn	260-7491	262-0661
Electric	Westar Energy - Distribution	Shane Price	261-6315	383-8600
Gas	Kansas Gas Service	Joe Bridgewater	832-3158	888-482-4950
Gas	Black Hills Energy	Kelly Kraus	941-1628	832-3121
Telephone	AT&T	Jason Edwards	268-2008	800-344-7233
Water	Wichita Water Department	Greg Lalley	268-4555	268-4514
Storm Water Sewer	Wichita SWS Maintenance	Alan Johnson	268-4090	
Sanitary Sewer	Wichita Sewer Maintenance	Joe Loggins	268-4073	

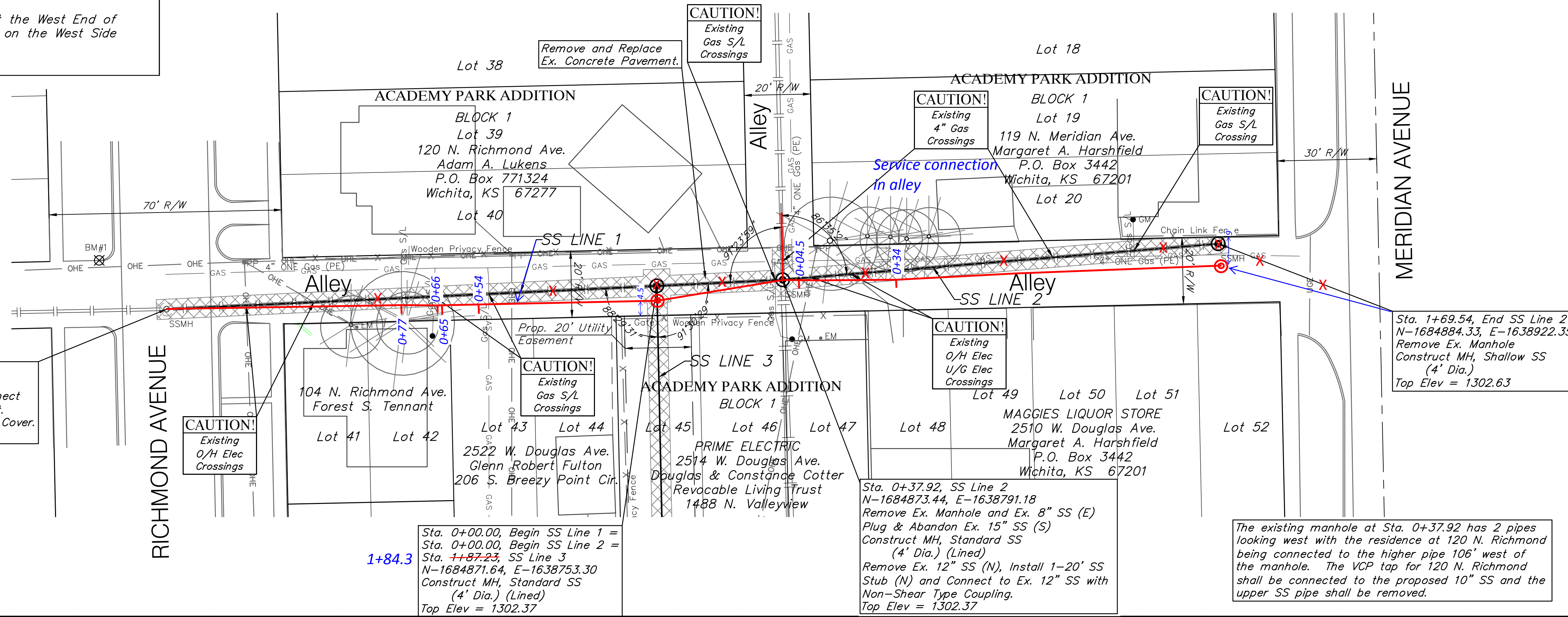
BENCHMARKS:
 BM #1 - Chiseled "X" on the Southwest Corner of the Concrete Lid of the Traffic Manhole in the Northwest Corner of Douglas & Meridian.
 Elev. = 1302.73 (NAVD 88)
 BM #2 - Chiseled "□" on the Top of Curb at the West End of the North Side Return of the Alley on the West Side of Richmond.
 Elev. = 1302.11 (NAVD 88)



SS TAP RECONNECTIONS		
ADDRESS	SS Line #	Approx. Station
104 N. Richmond	Line 1	0+78 0+77
120 N. Richmond	Line 1	0+68 0+66
2526 W. Douglas	Line 1	0+66 0+65
2522 W. Douglas	Line 1	0+54
2514 W. Douglas	Line 2	0+04.5
2510 W. Douglas	Line 2	0+34

SS TAP RECONNECTIONS		
ADDRESS	SS Line #	Approx. Station
2514 W. Douglas	Line 2	0+41
2510 W. Douglas	Line 2	0+70
2510 W. Douglas*	Line 2	0+91

* May be Dead



Sta. 1+47.80, End SS Line 1
 N-1684864.60, E-1638605.67
 Remove Ex. 10" SS (E) and Connect
 Prop. 10" SS, Grout & Seal Tight.
 Remove and Replace Ex. Ring & Cover.
 Top Elev. = 1301.97

CAUTION!
 Existing
 O/H Elec
 Crossings

CAUTION!
 Existing
 Gas S/L
 Crossings

CAUTION!
 Existing
 O/H Elec
 U/G Elec
 Crossings

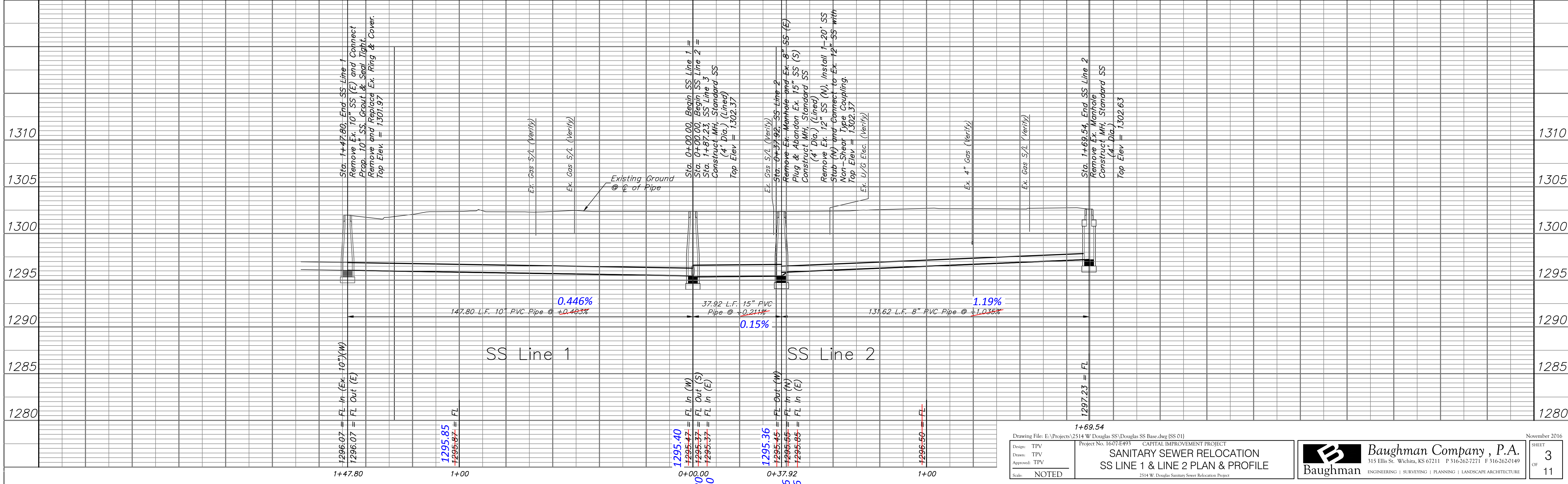
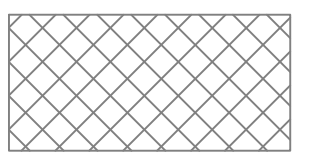
Sta. 1+69.54, End SS Line 2
 N-1684884.33, E-1638922.35
 Remove Ex. Manhole
 Construct MH, Shallow SS
 (4' Dia.)
 Top Elev = 1302.63

Sta. 0+00.00, Begin SS Line 1 =
 Sta. 0+00.00, Begin SS Line 2 =
 Sta. 1+87.23, SS Line 3
 N-1684871.64, E-1638753.30
 Construct MH, Standard SS
 (4' Dia.) (Lined)
 Top Elev = 1302.37

Sta. 0+37.92, SS Line 2
 N-1684873.44, E-1638791.18
 Remove Ex. Manhole and Ex. 8" SS (E)
 Plug & Abandon Ex. 15" SS (S)
 Construct MH, Standard SS
 (4' Dia.) (Lined)
 Remove Ex. 12" SS (N), Install 1-20' SS
 Stub (N) and Connect to Ex. 12" SS with
 Non-Shear Type Coupling.
 Top Elev = 1302.37

The existing manhole at Sta. 0+37.92 has 2 pipes
 looking west with the residence at 120 N. Richmond
 being connected to the higher pipe 106' west of
 the manhole. The VCP tap for 120 N. Richmond
 shall be connected to the proposed 10" SS and the
 upper SS pipe shall be removed.

Note:
 Pavement, Sidewalks, Etc.
 To Be Removed Are
 Indicated By:



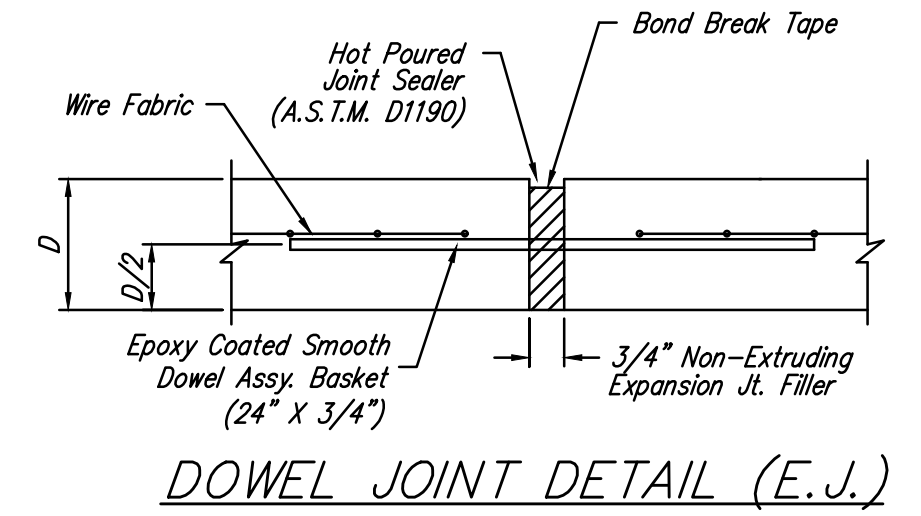
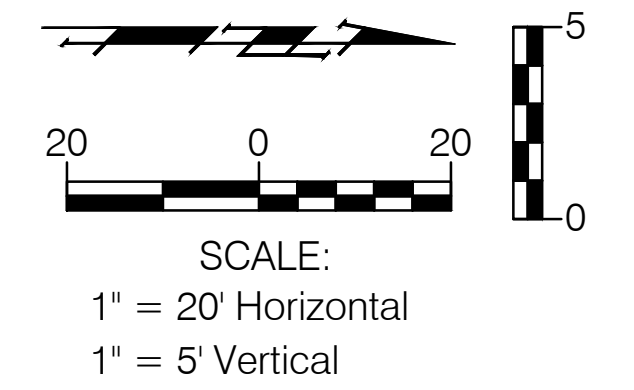
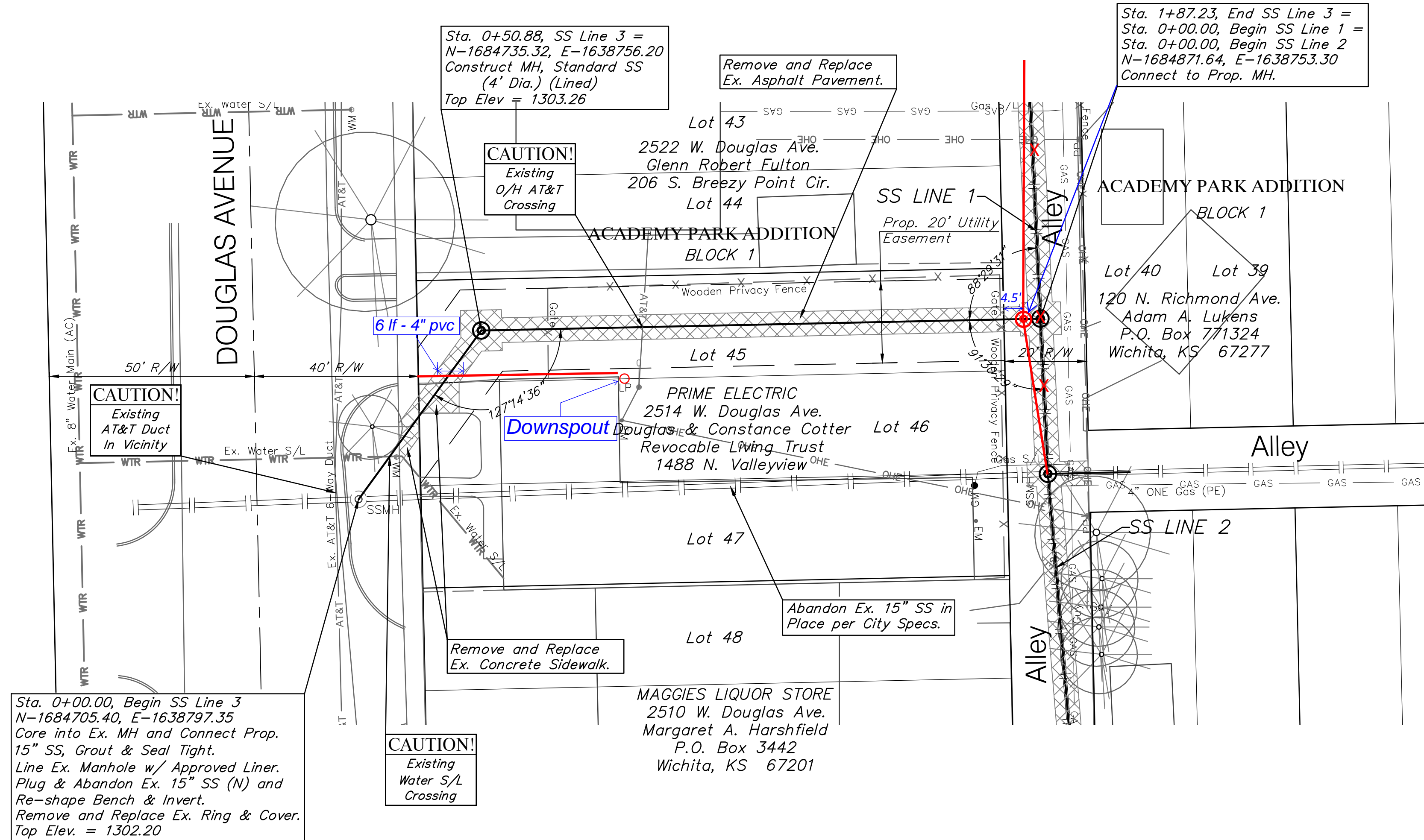
Drawing File: E:\Projects\2514 W Douglas SS\Douglas SS Base.dwg (SS 01)
 Project No. 1607 E493 CAPITAL IMPROVEMENT PROJECT
SANITARY SEWER RELOCATION
SS LINE 1 & LINE 2 PLAN & PROFILE
 2514 W. Douglas Sanitary Sewer Relocation Project

Baughman Company, P.A.
 315 Ellis St. Wichita, KS 67211 P 316-262-7271 F 316-262-0149
 ENGINEERING | SURVEYING | PLANNING | LANDSCAPE ARCHITECTURE

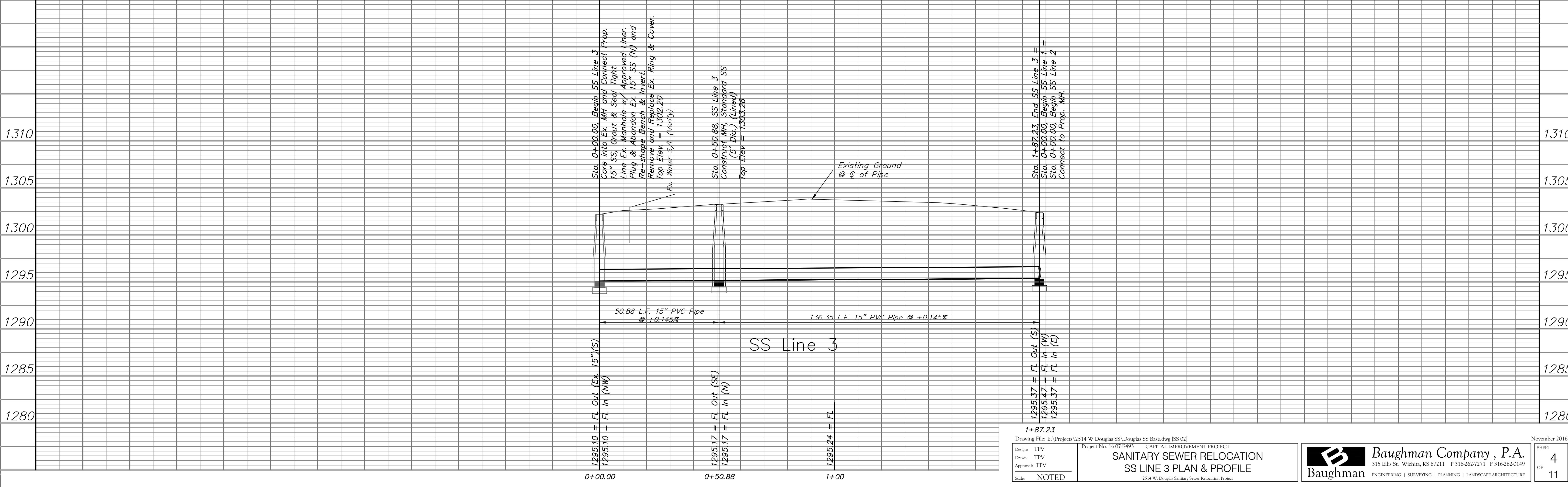
BENCHMARKS:

- BM #1 - Chiseled "X" on the Southwest Corner of the Concrete Lid of the Traffic Manhole in the Northwest Corner of Douglas & Meridian.
Elev. = 1302.73 (NAVD 88)
- BM #2 - Chiseled "□" on the Top of Curb at the West End of the North Side Return of the Alley on the West Side of Richmond.
Elev. = 1302.11 (NAVD 88)

When crossing the water meter and service line for 2514 W. Douglas, the Contractor shall remove the meter box, ring & cover and support the water meter when excavating and installing the sewer line. The Contractor shall then re-install the meter box, ring & lid to match the existing ground. All costs associated with this work shall not be paid for directly, but shall be considered SUBSIDIARY to the pipe installation.



Note:
Pavement, Sidewalks, Etc. To Be Removed Are Indicated By:



1+87.23
 Drawing File: E:\Projects\2514 W Douglas SS\Douglas SS Base.dwg (SS 02)
 Design: TPV
 Drawn: TPV
 Approved: TPV
 Scale: NOTED

Project No. 1607-E493 CAPITAL IMPROVEMENT PROJECT
SANITARY SEWER RELOCATION
SS LINE 3 PLAN & PROFILE
 2514 W. Douglas Sanitary Sewer Relocation Project

Baughman Company, P.A.
 315 Ellis St. Wichita, KS 67211 P 316-262-7271 F 316-262-0149
 ENGINEERING | SURVEYING | PLANNING | LANDSCAPE ARCHITECTURE

November 2016
 SHEET 4 OF 11