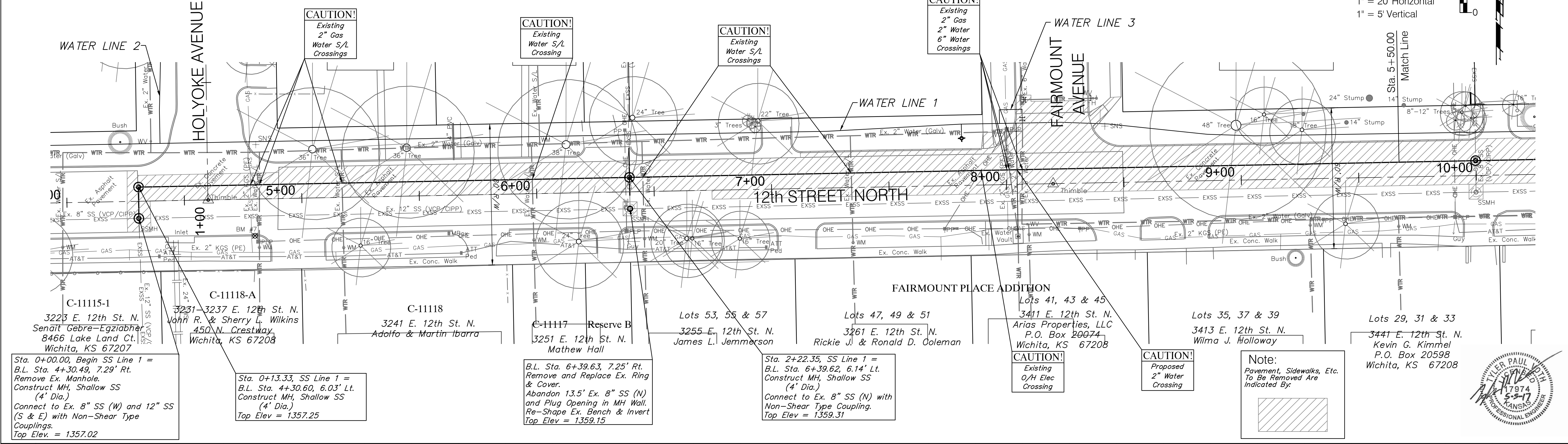
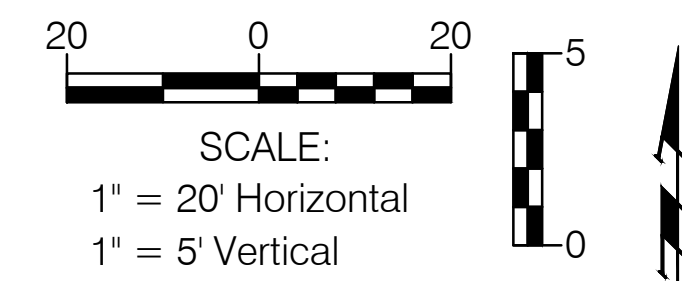


BENCHMARK:
 BM #7 - Chiseled "C" on the Top of Curb at the Northwest Curb
 Return of the Driveway to 3237 E. 12th Street North.
 Elev. = 1357.22 (NAVD 88)



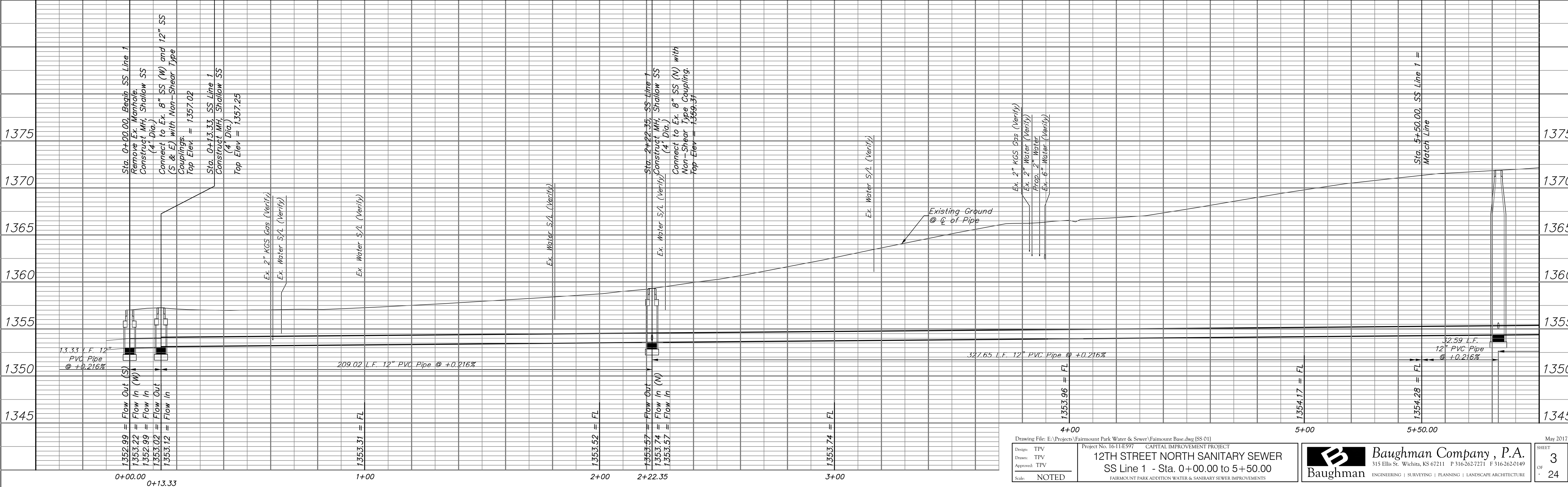
Sta. 0+00.00, Begin SS Line 1 = B.L. Sta. 4+30.49, 7.29' Rt. Remove Ex. Manhole. Construct MH, Shallow SS (4' Dia.)
 Connect to Ex. 8" SS (W) and 12" SS (S & E) with Non-Shear Type Couplings.
 Top Elev. = 1357.02

Sta. 0+13.33, SS Line 1 = B.L. Sta. 4+30.60, 6.03' Lt. Construct MH, Shallow SS (4' Dia.)
 Top Elev. = 1357.25

B.L. Sta. 6+39.63, 7.25' Rt. Remove and Replace Ex. Ring & Cover. Abandon 13.5' Ex. 8" SS (N) and Plug Opening in MH Wall. Re-Shape Ex. Bench & Invert Top Elev. = 1359.15

Sta. 2+22.35, SS Line 1 = B.L. Sta. 6+39.62, 6.14' Lt. Construct MH, Shallow SS (4' Dia.)
 Connect to Ex. 8" SS (N) with Non-Shear Type Coupling.
 Top Elev. = 1359.31

Note:
 Pavement, Sidewalks, Etc. To Be Removed Are Indicated By:



Drawing File: E:\Projects\Fairmount Park Water & Sewer\Fairmount Base.dwg (SS 01)
 Design: TPV
 Drawn: TPV
 Approved: TPV
 Scale: NOTED

12TH STREET NORTH SANITARY SEWER
 SS Line 1 - Sta. 0+00.00 to 5+50.00

Baughman Company, P.A.
 315 Ellis St. Wichita, KS 67211 P 316-262-7271 F 316-262-0149
 ENGINEERING | SURVEYING | PLANNING | LANDSCAPE ARCHITECTURE