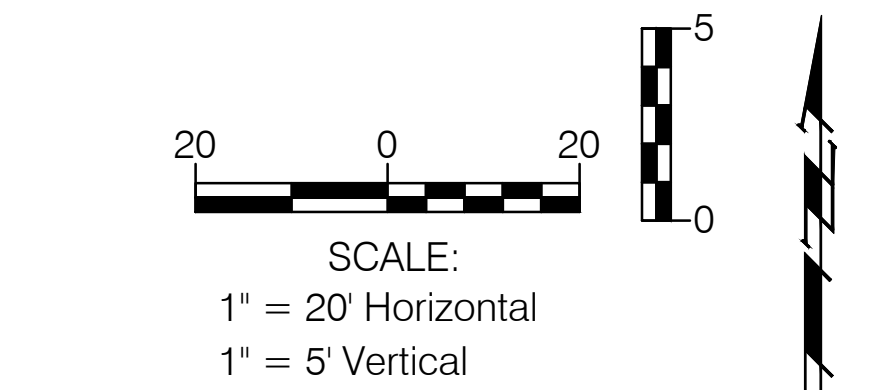
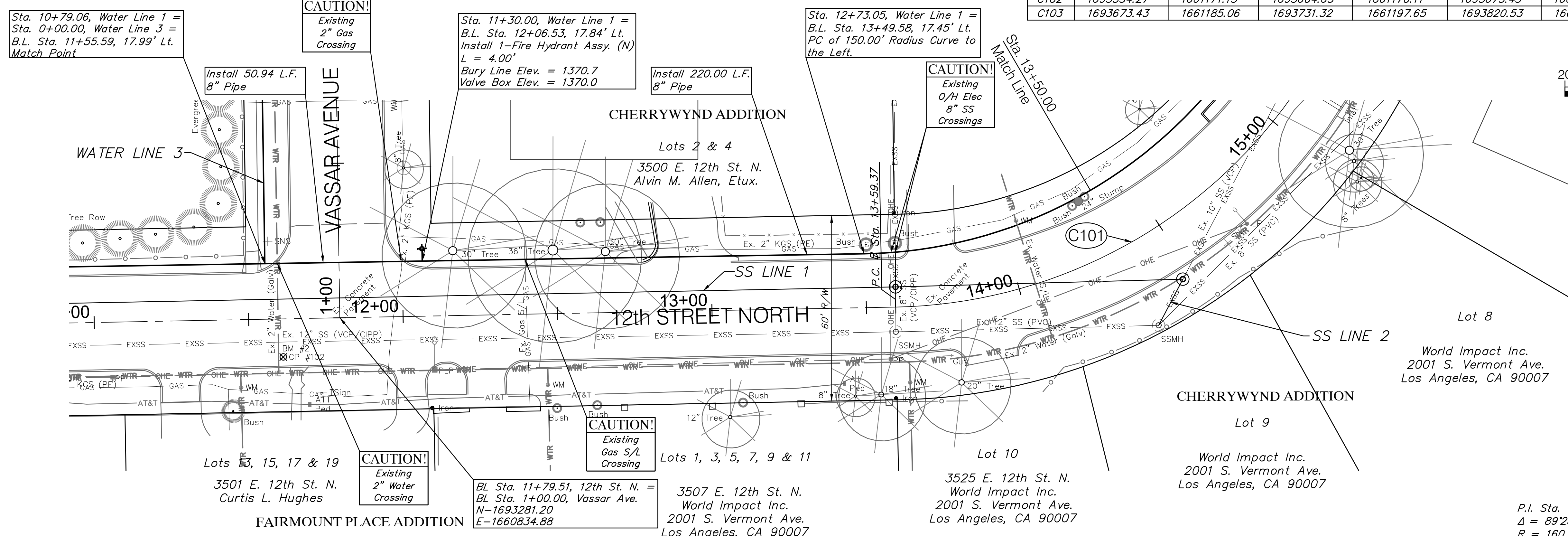
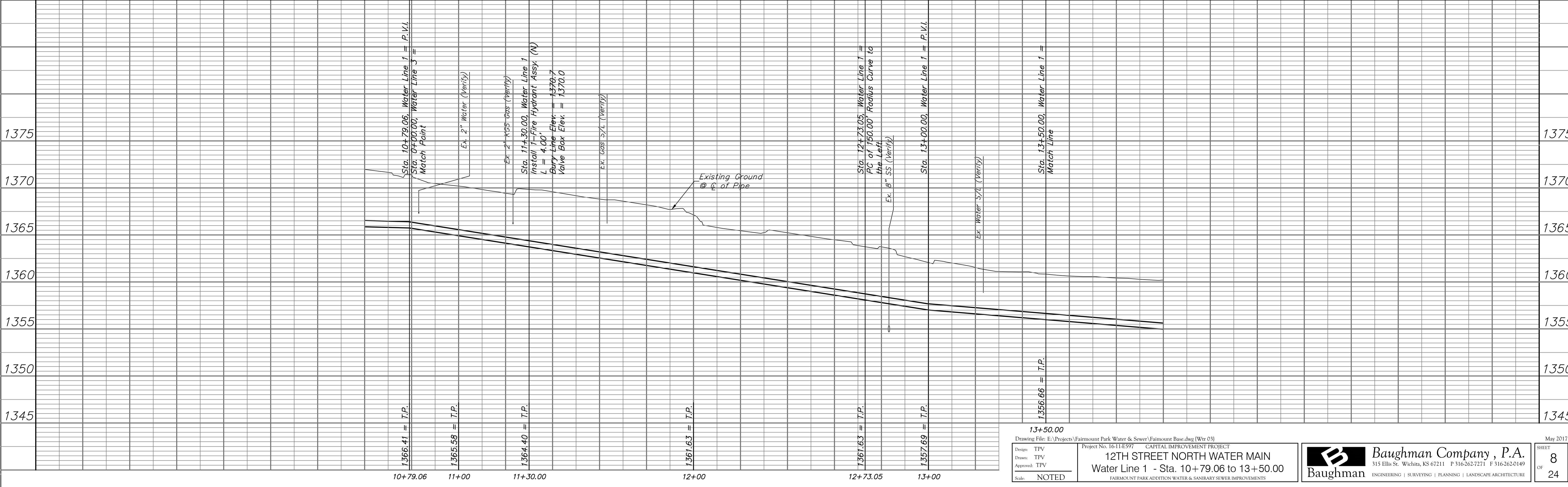


BENCHMARK:
 BM #2 - Chiseled "X" in the South Lane of 12th Street North
 Just West of the Walk to 3501 E. 12th Street North.
 Elev. = 1358.70 (NAVD 88)

CURVE NO.	P.C. COORDINATES		P.I. COORDINATES		P.T. COORDINATES		C.C. COORDINATES	
	NORTH	EAST	NORTH	EAST	NORTH	EAST	NORTH	EAST
C101	1693284.67	1661014.71	1693287.76	1661174.81	1693447.10	1661185.06	1693445.49	1661011.61
C102	1693534.27	1661171.15	1693604.65	1661170.11	1693673.43	1661185.06	1693543.37	1661783.33
C103	1693673.43	1661185.06	1693731.32	1661197.65	1693820.53	1661193.55	1693787.81	1660481.46



CURVE DATA:
 P.I. Sta. 15+19.50 Bk. = P.I. Sta. 14+51.18 Ahd.
 $\Delta = 89^{\circ}28'15''$ Lt. $L = 251.17'$
 $R = 160.85$ $E = 66.12'$
 $T = 160.13'$



Drawing File: E:\Projects\Fairmount Park Water & Sewer\Fairmount Base.dwg (Wre 01)
 Project No. 16-11-E597 CAPITAL IMPROVEMENT PROJECT
12TH STREET NORTH WATER MAIN
 Water Line 1 - Sta. 10+79.06 to 13+50.00
 FAIRMOUNT PARK ADDITION WATER & SANITARY SEWER IMPROVEMENTS

Baughman Company, P.A.
 315 Ellis St. Wichita, KS 67211 P 316-262-2271 F 316-262-0149
 ENGINEERING | SURVEYING | PLANNING | LANDSCAPE ARCHITECTURE

May 2017
 SHEET 8 OF 24