

BENCHMARK:
 BM #5 - Chiseled "X" at the Centerline of the Wheel Chair Ramp in the West Side of the Valley Gutter at Yale Avenue.
 Elev. = 1360.92 (NAVD 88)

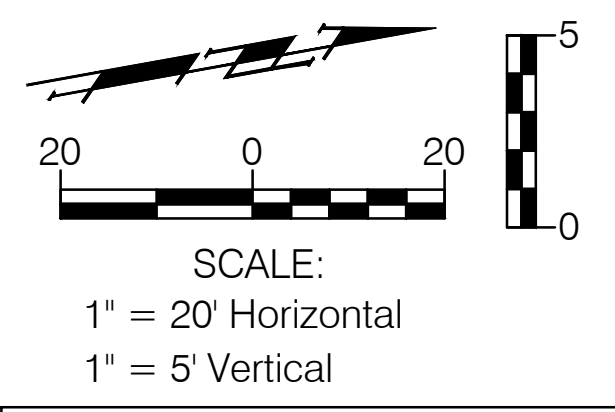
C102

CURVE DATA:
 P.I. Sta. 17+68.11 Bk. = P.I. Sta. 17+67.04 Ahd.
 $\Delta = 13'06''58''$ Rt. L = 140.15'
 R = 612.24 E = 4.03'
 T = 70.38'

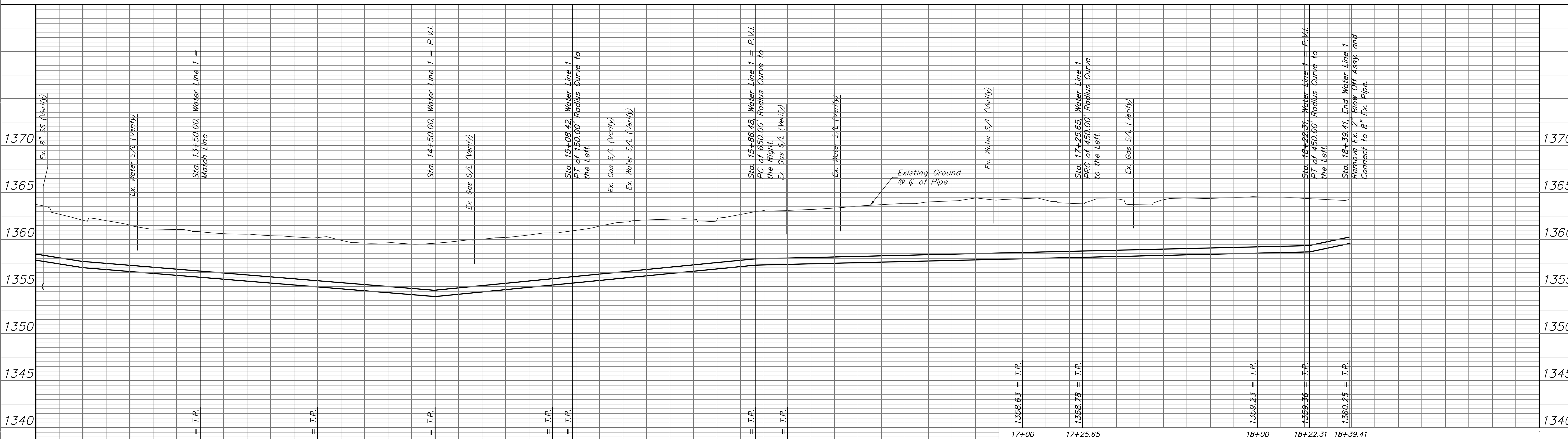
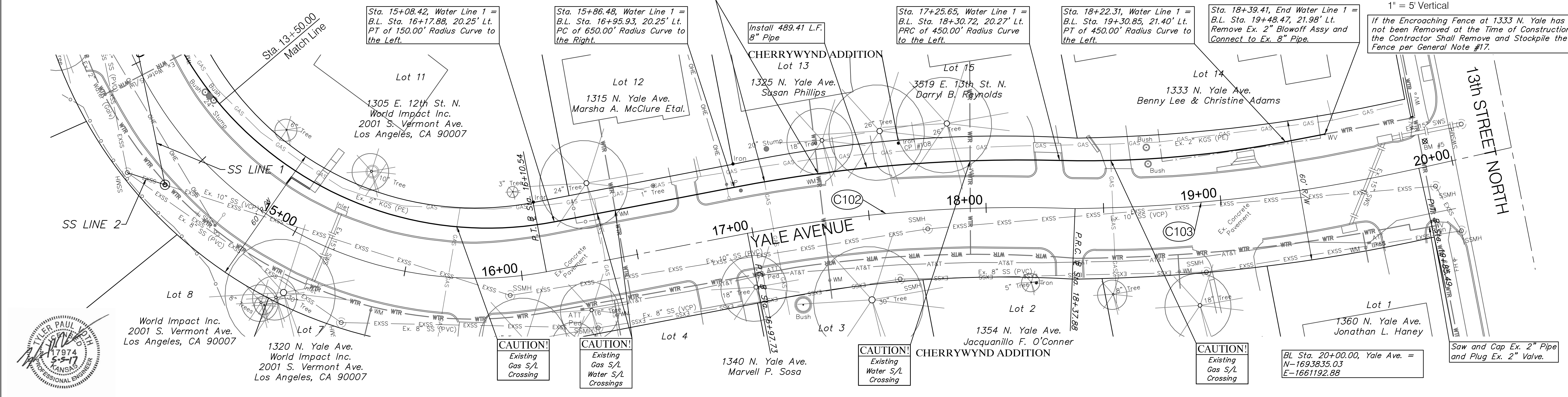
C103

CURVE DATA:
 P.I. Sta. 18+97.12 Bk. = P.I. Sta. 18+96.18 Ahd.
 $\Delta = 11'51''54''$ Lt. L = 147.62'
 R = 712.83 E = 5.57'
 T = 70.38'

Prior to Beginning Construction, The Contractor Shall Excavate the Ex. 8" Water Line at Sta. 18+39.41 to Verify Size and Location. All Necessary Adjustments to the Proposed and Existing Water Lines to Make the Connections, Including Additional Water Line and Fittings, Shall be Considered SUBSIDIARY to the Water Line Installations.



If the Encroaching Fence at 1333 N. Yale has not been Removed at the Time of Construction, the Contractor Shall Remove and Stockpile the Fence per General Note #17.



17+00 17+25.65 18+00 18+22.31 18+39.41
 Design: TPV
 Drawn: TPV
 Approved: TPV
 Scale: NOTED

12TH STREET NORTH WATER MAIN
 Water Line 1 - Sta. 13+50.00 to 18+39.41
 FAIRMOUNT PARK ADDITION WATER & SANITARY SEWER IMPROVEMENTS

Baughman Company, P.A.
 315 Ellis St. Wichita, KS 67211 P 316-262-7271 F 316-262-0149
 ENGINEERING | SURVEYING | PLANNING | LANDSCAPE ARCHITECTURE

May 2017
 SHEET 9 OF 24