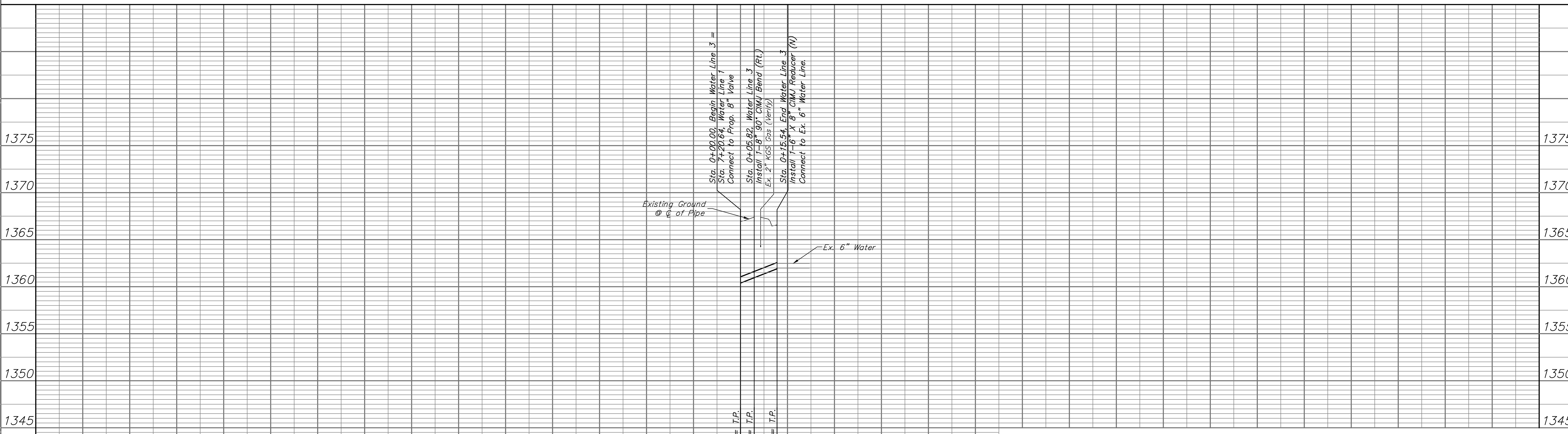
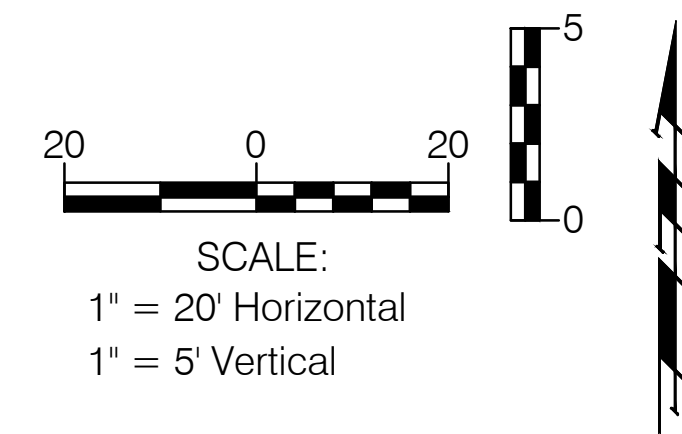
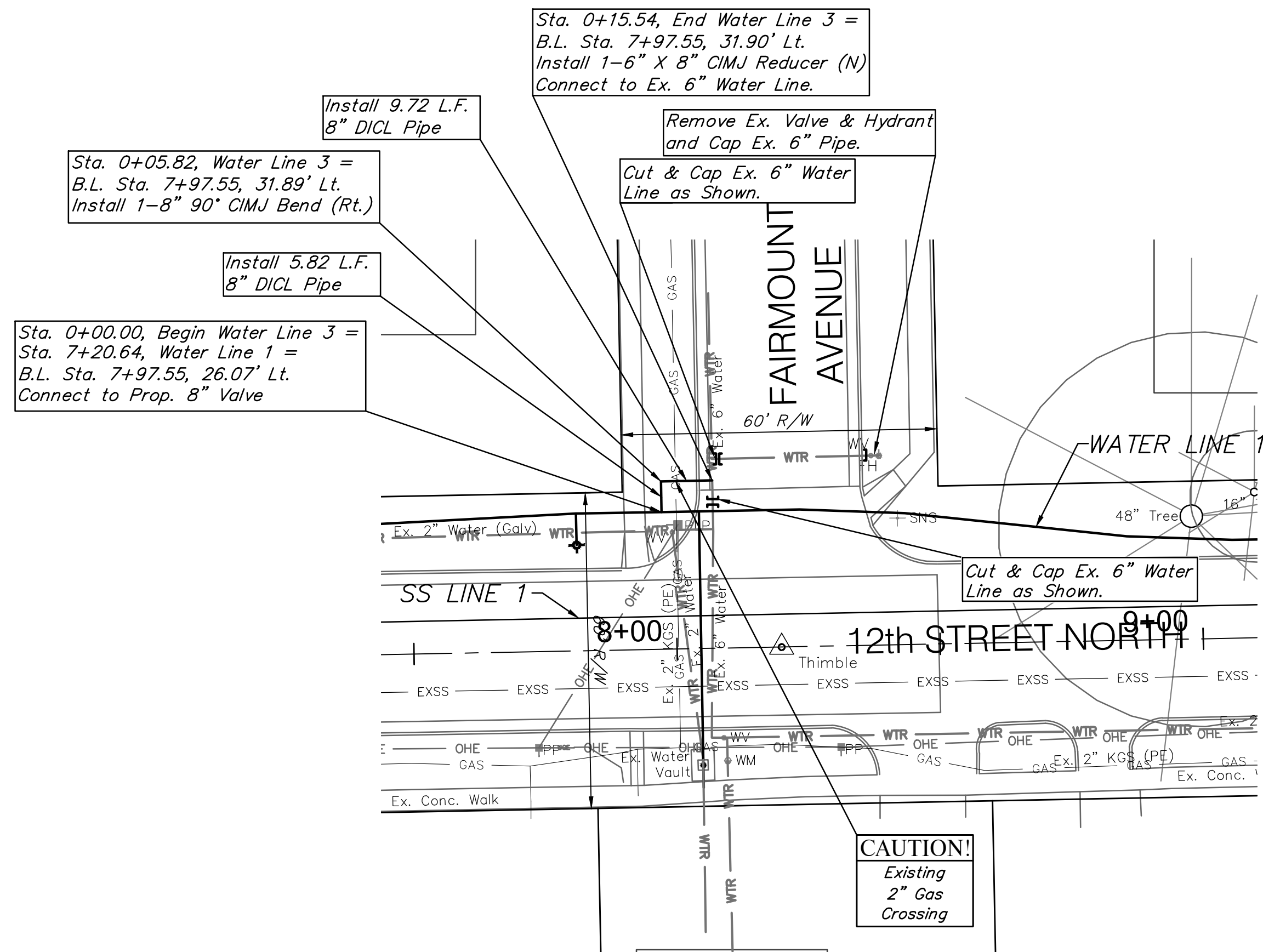


BENCHMARK:
 BM #2 - Chiseled "X" in the South Lane of 12th Street North
 Just West of the Walk to 3501 E. 12th Street North.
 Elev. = 1358.70 (NAVD 88)



Sta. 0+00.00, Begin Water Line 3 =
 Sta. 7+20.64, Water Line 1 =
 Connect to Prop. 8" Valve

Sta. 0+05.82, Water Line 3 =
 Install 1-8" 90° CIMJ Bend (Rt.)

Sta. 0+15.54, End Water Line 3 =
 B.L. Sta. 7+97.55, 31.90' Lt.
 Install 1-6" X 8" CIMJ Reducer (N)
 Connect to Ex. 6" Water Line.

Existing Ground @ C of Pipe

Ex. 6" Water

1361.05 = T.P.
 1361.62 = T.P.
 1362.57 = T.P.

0+00.00
 0+05.82
 0+15.54

