

BENCHMARK #1:
Chiseled square on top of curb, west end of south median curb within Red Oaks R/W, east side of Waterfront Parkway R/W. Elev. = 1380.50 NAVD88

BENCHMARK #2:
Chiseled cross on conc. sidewalk, deflection corner in northwest line of Reserve "J", The Waterfront Seventh Addition. Elev. = 1381.88 NAVD88

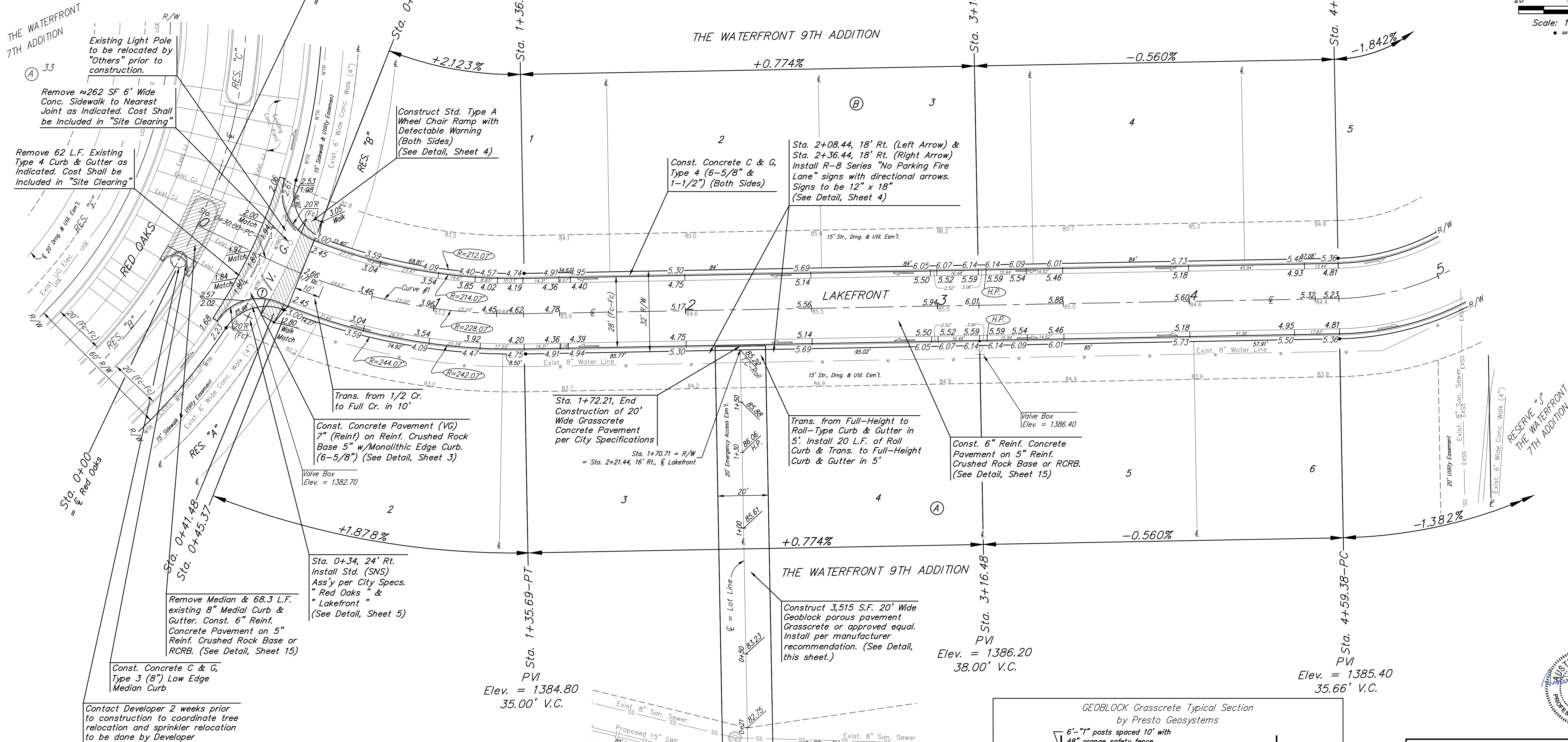
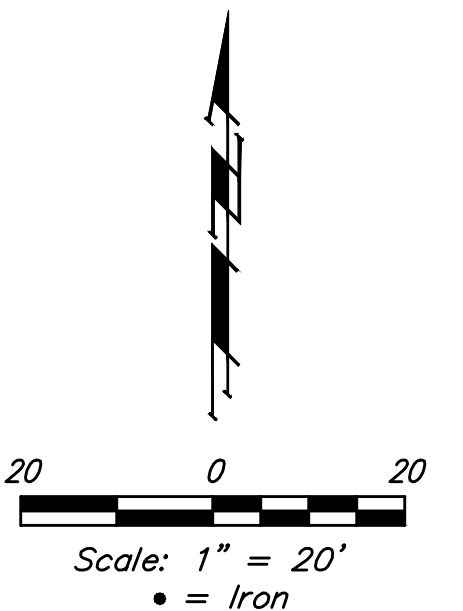
Street & Station	Location Description	Elevation
Lakefront 3+16.48, 14.25' Rt.	Adjacent to Fire Hydrant at NE Corner of Lot 4, Block A	

PVI
Elev. = 1385.40
26.89' V.C.

PVI
Elev. = 1386.20
38.00' V.C.

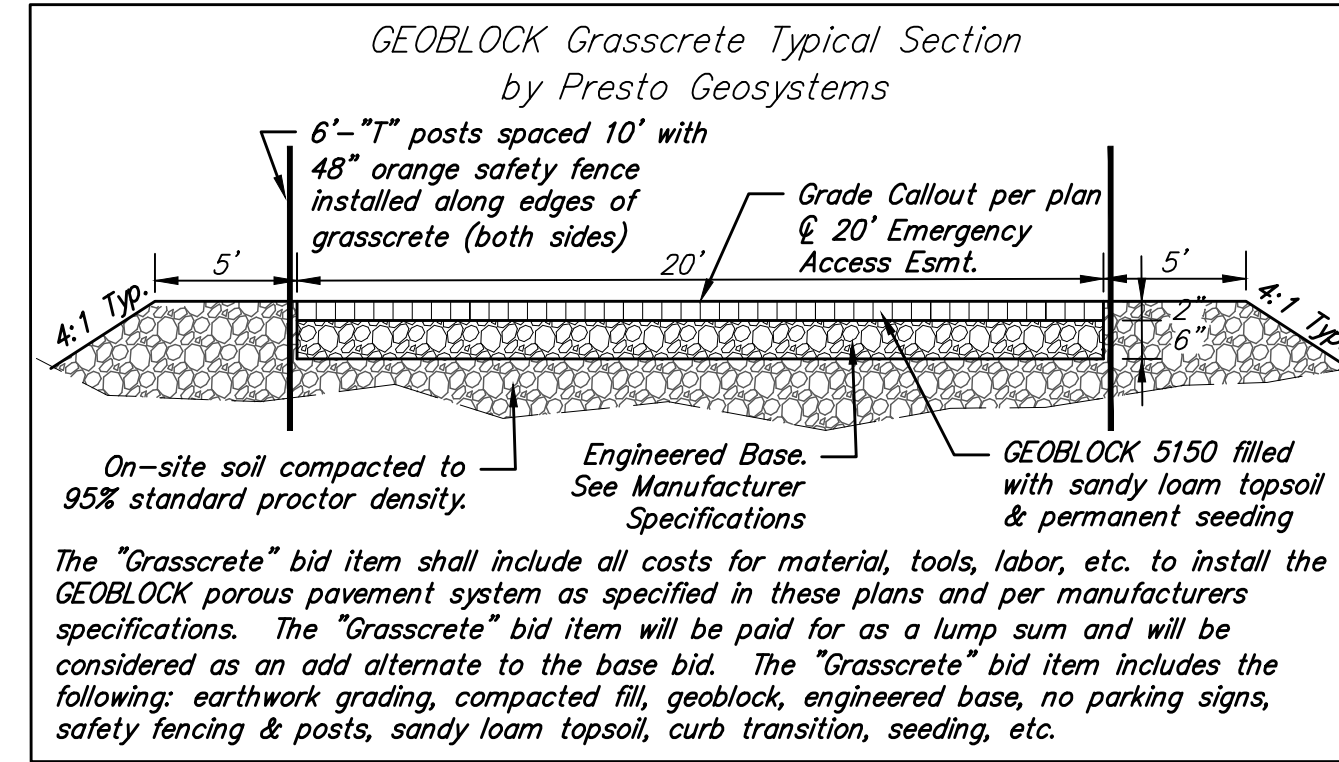
PVI
Elev. = 1384.80
37.77' V.C.

PVI
Elev. = 1384.80
35.00' V.C.



Curve #1
Curve Data Based on Centerline
Rad. = 228.07' Delta = 26°33'03" Tangent = 53.81'
Arc = 105.69' L.C. = 104.74' Def./Ft. = 7.53643 Min.

Station	Arc	Face Chord Length		Defl.	Total Defl.
		8' Left	8' Right		
0+30.00	-	-	-	0'00"00"	0'00"00"
0+41.48	11.48'	10.37'	12.59'	1'26"31"	1'26"31"
0+45.37	3.89'	3.51'	4.27'	0'29"19"	1'55"50"
0+50.00	4.63'	4.18'	5.08'	0'34"54"	2'30"44"
0+75.00	25.00'	22.58'	27.40'	3'08"24"	5'39"08"
1+00.00	25.00'	22.58'	27.40'	3'08"25"	8'47"33"
1+25.00	25.00'	22.58'	27.40'	3'08"25"	11'55"58"
1+35.69	10.69'	9.66'	11.72'	1'20"33"	13'16"31"



Baughman The Waterfront 9th Addition
LAKEFRONT
Sta. 0+00 to Sta. 4+59.36

Baughman Company, P.A. 315 Ellis St. Wichita, KS 67211 P 316-262-7271 F 316-262-0149
ENGINEERING | SURVEYING | PLANNING | LANDSCAPE ARCHITECTURE

PROJECT NUMBER 472-85377	DESIGN AEG	DRAWN JAK
REVISIONS:	APPROVED	DATE 5/05/17
	SCALE Noted	SHEET 6 OF 22

Projects\Waterfront Ninth Addition_16-09\225\Engineering\STR_1612\8635\STR PLANS.dwg