

J:\PROJECTS\2017\1401010482 - PREMIER ESTANCIA\03-CIVIL\CAD\W\FR\RESIDENTIAL\PLN\214442 - RES. CB. 01 - PH2.DWG  
 PLOTTED: Tuesday, May 16, 2017 @ 11:55AM

PLAT POINTS			
Point #	Northing	Easting	Desc.
673	1710749.38	1624788.45	PI
674	1710717.33	1624704.08	PI
676	1710676.64	1624643.40	PI
677	1710756.17	1624666.69	PI
678	1710755.59	1624664.70	PI
680	1710596.80	1624716.95	PI
681	1710596.45	1624714.96	PI
692	1710723.70	1624714.23	PI
697	1710722.53	1624712.26	PI
737	1710457.10	1624609.91	PI
738	1710334.47	1624525.32	PI
739	1710507.14	1624374.90	PI
740	1710377.17	1624377.69	PI
806	1710317.35	1624398.98	PI
807	1710183.17	1624401.85	PI
810	1710312.68	1624319.06	PI
811	1710181.46	1624321.87	PI
815	1710329.53	1624793.81	PI
869	1710770.67	1624724.39	PI
874	1710785.85	1624575.37	PI
893	1710545.91	1624134.02	PI
894	1710570.11	1624143.79	PI
895	1710505.43	1624294.92	PI
896	1710368.50	1624297.86	PI
897	1710503.72	1624214.94	PI

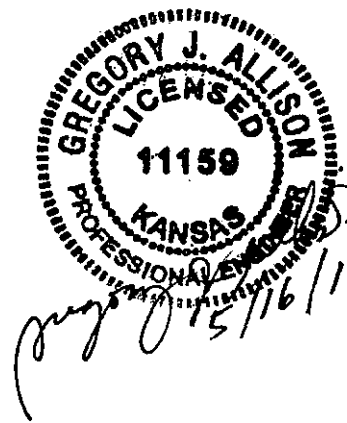
PLAT POINTS			
Point #	Northing	Easting	Desc.
898	1710365.22	1624217.91	PI
899	1710373.25	1624137.72	PI
900	1710544.20	1624054.04	PI
901	1710389.84	1624057.35	PI
902	1710542.48	1623974.06	PI
903	1710400.85	1623977.09	PI
904	1710540.77	1623894.07	PI
905	1710404.82	1623896.99	PI
909	1710539.05	1623814.09	PI
910	1710401.88	1623817.03	PI
911	1710537.34	1623734.11	PI
912	1710392.01	1623737.23	PI
914	1710543.88	1624039.04	PI
916	1710542.16	1623959.06	PI
918	1710540.45	1623879.08	PI
920	1710538.73	1623799.10	PI
922	1710537.02	1623719.12	PI
923	1710200.47	1623885.62	PI
924	1710177.71	1624146.91	PI
959	1710307.00	1624239.16	PI
960	1710179.74	1624241.89	PI
961	1710311.53	1624159.05	PI
962	1710178.03	1624161.91	PI
963	1710326.39	1624078.71	PI
964	1710183.38	1624081.78	PI

PLAT POINTS			
Point #	Northing	Easting	Desc.
965	1710340.20	1623998.40	PI
966	1710190.36	1624001.61	PI
967	1710346.67	1623908.24	PI
968	1710198.22	1623911.42	PI
969	1710343.79	1623818.28	PI
970	1710199.09	1623821.38	PI
971	1710333.37	1623738.48	PI
972	1710197.38	1623741.40	PI
975	1710356.38	1623401.13	PI
976	1710357.95	1623474.48	PI
978	1710535.30	1623639.13	PI
979	1710355.28	1623524.41	PI
981	1710533.59	1623559.15	PI
983	1710531.88	1623479.17	PI
987	1710535.63	1623654.13	PI
988	1710380.26	1623657.46	PI
989	1710533.91	1623574.15	PI
990	1710379.24	1623577.46	PI
991	1710532.20	1623494.17	PI
992	1710397.14	1623497.06	PI
1017	1710322.18	1623658.70	PI
1018	1710195.66	1623661.42	PI
1019	1710321.09	1623578.71	PI
1020	1710193.95	1623581.43	PI
1021	1710312.29	1623498.88	PI

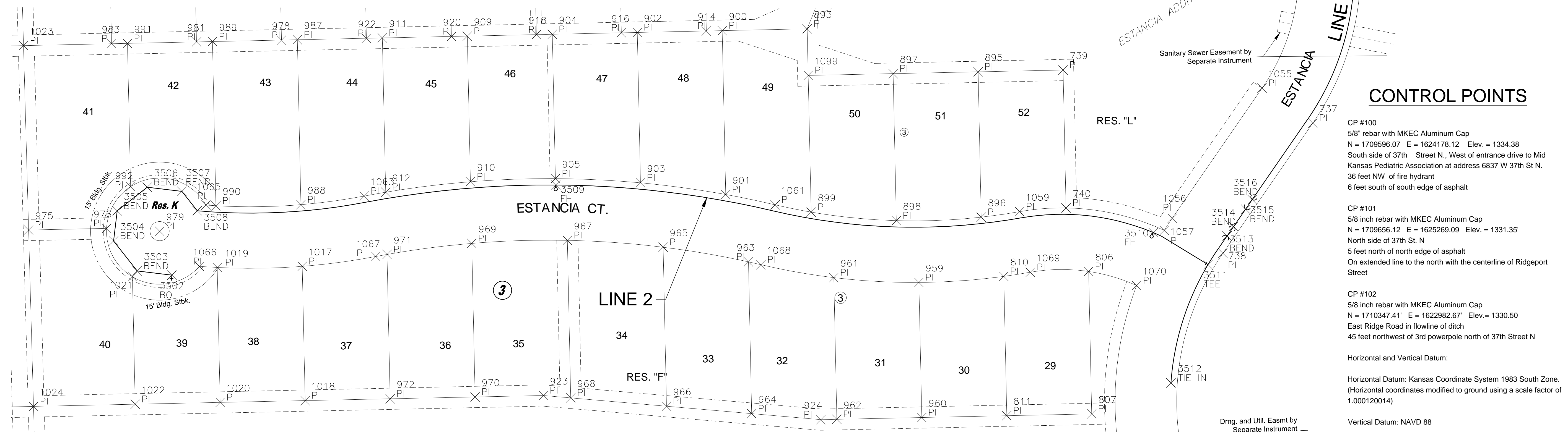
PLAT POINTS			
Point #	Northing	Easting	Desc.
1022	1710192.24	1623501.45	PI
1023	1710530.10	1623396.32	PI
1024	1710190.18	1623405.73	PI
1055	1710490.03	1624562.17	PI
1056	1710367.41	1624477.58	PI
1057	1710356.01	1624470.09	PI
1059	1710373.71	1624333.99	PI
1061	1710380.15	1624103.80	PI
1063	1710388.40	1623717.11	PI
1065	1710379.86	1623567.95	PI
1066	1710322.16	1623561.86	PI
1067	1710331.43	1623727.97	PI
1068	1710323.69	1624090.52	PI
1069	1710316.59	1624344.09	PI
1070	1710304.09	1624444.15	PI
1089	1710740.32	1624613.42	PI
1090	1710754.61	1624661.38	PI
1099	1710502.00	1624134.96	PI

WATER POINTS			
Point #	Northing	Easting	Desc.
3502	1710313.88	1623536.04	BO
3503	1710317.79	1623503.36	BEND
3504	1710346.09	1623481.10	BEND
3505	1710374.42	1623484.48	BEND
3506	1710396.68	1623512.78	BEND
3507	1710392.78	1623545.46	BEND
3508	1710374.50	1623559.83	BEND
3509	1710398.82	1623897.26	FH
3510	1710354.01	1624459.75	FH
3511	1710323.79	1624511.34	TEE
3512	1710212.31	1624476.43	TIE IN
3513	1710350.82	1624529.31	BEND

WATER POINTS			
Point #	Northing	Easting	Desc.
3514	1710359.56	1624535.34	BEND
3515	1710376.03	1624546.70	BEND
3516	1710385.05	1624552.92	BEND
3517	1710658.72	1624642.09	FH
3518	1710740.43	1624606.14	TEE
3519	1710793.03	1624558.15	BO
3533	1710753.15	1624596.92	BEND
3534	1710759.92	1624591.49	BEND
3535	1710774.76	1624578.09	BEND
3536	1710781.55	1624571.18	BEND



*Greg 5/16/17*



**CONTROL POINTS**

- CP #100  
5/8" rebar with MKEC Aluminum Cap  
N = 1709596.07 E = 1624178.12 Elev. = 1334.38  
South side of 37th Street N., West of entrance drive to Mid Kansas Pediatric Association at address 6837 W 37th St N.  
36 feet NW of fire hydrant  
6 feet south of south edge of asphalt
  - CP #101  
5/8 inch rebar with MKEC Aluminum Cap  
N = 1709656.12 E = 1625269.09 Elev. = 1331.35  
North side of 37th St. N  
5 feet north of north edge of asphalt  
On extended line to the north with the centerline of Ridgeport Street
  - CP #102  
5/8 inch rebar with MKEC Aluminum Cap  
N = 1710347.41 E = 1622982.67 Elev. = 1330.50  
East Ridge Road in flowline of ditch  
45 feet northwest of 3rd powerpole north of 37th Street N
- Horizontal and Vertical Datum:  
Horizontal Datum: Kansas Coordinate System 1983 South Zone.  
(Horizontal coordinates modified to ground using a scale factor of 1.000120014)  
Vertical Datum: NAVD 88

EVERY ATTEMPT HAS BEEN MADE TO INSURE ALL COORDINATE VALUES SHOWN ARE AN ACCURATE AND TRUE REPRESENTATION OF THE CURRENT PLANS. ALL VALUES ARE TO BE CONFIRMED WITH THE FINAL SIGNED PLAN SET BEFORE USE.



PRIVATE WATER DISTRIBUTION PLANS FOR  
**ESTANCIA ADDITION**  
 PHASE 2

©2017 MKEC Engineering All Rights Reserved www.mkec.com  
 These drawings and their contents, including, but not limited to, all concepts, designs, & ideas are the exclusive property of MKEC Engineering (MKEC), and may not be used or reproduced in any way without the express consent of MKEC.

**BUBBLE MAP 1 OF 2**

PROJECT NO.	448-90694	
DATE	MAY 2017	
SCALE	1" = 50'	
DESIGNED	DRAWN	CHECKED
DFL	RWB	GJA
NO.	REVISION	DATE
SHEET NO.		