

Benchmarks:

"□" Cut on Top of Curb at West Line of Lot 7, Block A, Auburn Hills 5th Addition. Elevation = 207.73 (City Datum)

Disc in Back of Curb, North of Front Corner Common to Lots 23 and 24, Block D, Auburn Hills 12th Addition. Elevation = 191.84 (City Datum)

"□" Cut on Center of Catch Basin North of Lot Corner Common to Lots 1 and 15, Block B, Auburn Hills 14th Addition. Elevation = 193.65 (City Datum)

Construct 8' Wide Wheel Chair Ramp (Both Sides). To be Paid as "Wheelchair Ramp w/ Detectable Warnings" (See Detail, Sheet 5)

Remove and Replace 134 S.F. Collapsed Existing Concrete Golf Cart Path as Indicated. Removal shall be Included in "Site Clearing" and Replacement shall be Paid per S.F. as "Concrete Sidewalk". Coordinate Construction with Auburn Hills Golf Course.

Remove Existing Gravel and Asphalt Golf Cart Path & Replace with 520 S.F. 8' Concrete Golf Cart Path as Indicated. Shall be Paid per S.F. as "Concrete Sidewalk". Coordinate Construction with Auburn Hills Golf Course.

Contractor shall Coordinate with Auburn Hills Golf Course prior to Construction. Contact Ron Mosher at 219-9751.

Subdivision Bench Marks		
Street & Station	Location Description	Elevation
Fawnwood 4+01.41, 17.25' Rt.	Adjacent to Fire Hydrant between Lots 18-19, Block D	
Moscelyn 2+64.85, 17.25' Rt.	Adjacent to Fire Hydrant between Lots 2-3, Block B	



Scale: 1" = 20'
• = Iron

Install 50 L.F. 24" White Pavement Marking per Detail, Sheet 10 (5 Markings, 10' L x 24" W) at Golf Cart Crossing

Saw Cut, Remove & Replace Existing Surface Course as Indicated. Cost Shall be Included in "Site Clearing" and "Site Restoration"

Remove Existing Gravel Drive. Cost of Removal to be Included in "Site Clearing"

Construct Std. Comb. Roll Type Curb & Gutter (3-5/8")

Construct 4' Wide Sidewalk

Sta 5+35.00, 25' Rt. Install std. D3 (SNS) ass'y as per City specs. "Fawnwood"

Sta 6+00.00, 25' Rt. Install std. D3 (SNS) ass'y as per City specs. "Fawnwood" & "Moscelyn".

Sta. 0+00, Begin Const. of 5" A.C. Pavement W/ 5" Reinf. Rock Base.

VALVE NUMBER	BASELINE STATION	OFFSET DISTANCE	OFFSET DIRECTION
V1	4+01.41	24'	Rt.

Paving Contractor will be Responsible to Operate all Water Valves on the Project, in the Presence of the Inspector, to Ensure Accessibility to the Valves, and that all Valves are Left in the "ON" Position when the Project is Completed.

Construct Std. 8" 20' Wide Concrete Drive per City of Wichita Specs (See Detail, Sheet 6)

Install Two (2) Maxiforce MCSP-SS1-S Collapsible Standard Hydrant-Wrench Operated Traffic Control Bollards as Indicated. Any Alternates must be Approved by the Developer and Wichita Fire Department

Construct 5" A.C. Pavement W/ 5" Reinf. Rock Base.

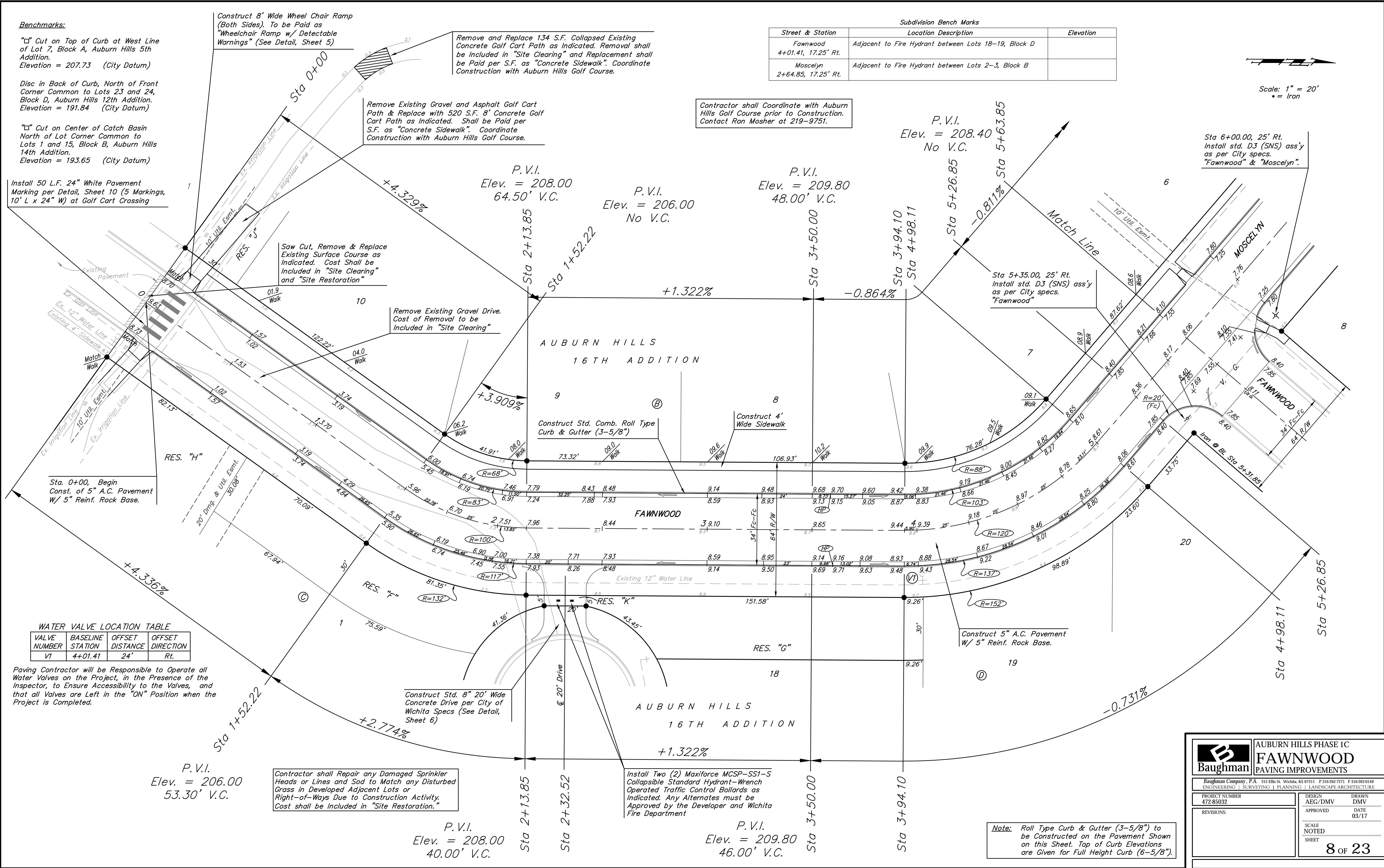
P.V.I.
Elev. = 206.00
53.30' V.C.

Contractor shall Repair any Damaged Sprinkler Heads or Lines and Sod to Match any Disturbed Grass in Developed Adjacent Lots or Right-of-Ways Due to Construction Activity. Cost shall be Included in "Site Restoration."

P.V.I.
Elev. = 208.00
40.00' V.C.

P.V.I.
Elev. = 209.80
46.00' V.C.

Note: Roll Type Curb & Gutter (3-5/8") to be Constructed on the Pavement Shown on this Sheet. Top of Curb Elevations are Given for Full Height Curb (6-5/8").



		AUBURN HILLS PHASE 1C	
		FAWNWOOD PAVING IMPROVEMENTS	
<small>Baughman Company, P.A. 315 Ellis St. Wichita, KS 67211 P 316-262-7271 F 316-262-0149 ENGINEERING SURVEYING PLANNING LANDSCAPE ARCHITECTURE</small>			
PROJECT NUMBER 472-85032	DESIGN AEG/DMV	DRAWN DMV	DATE 03/17
REVISIONS:	APPROVED	NOTED	SHEET
			8 OF 23