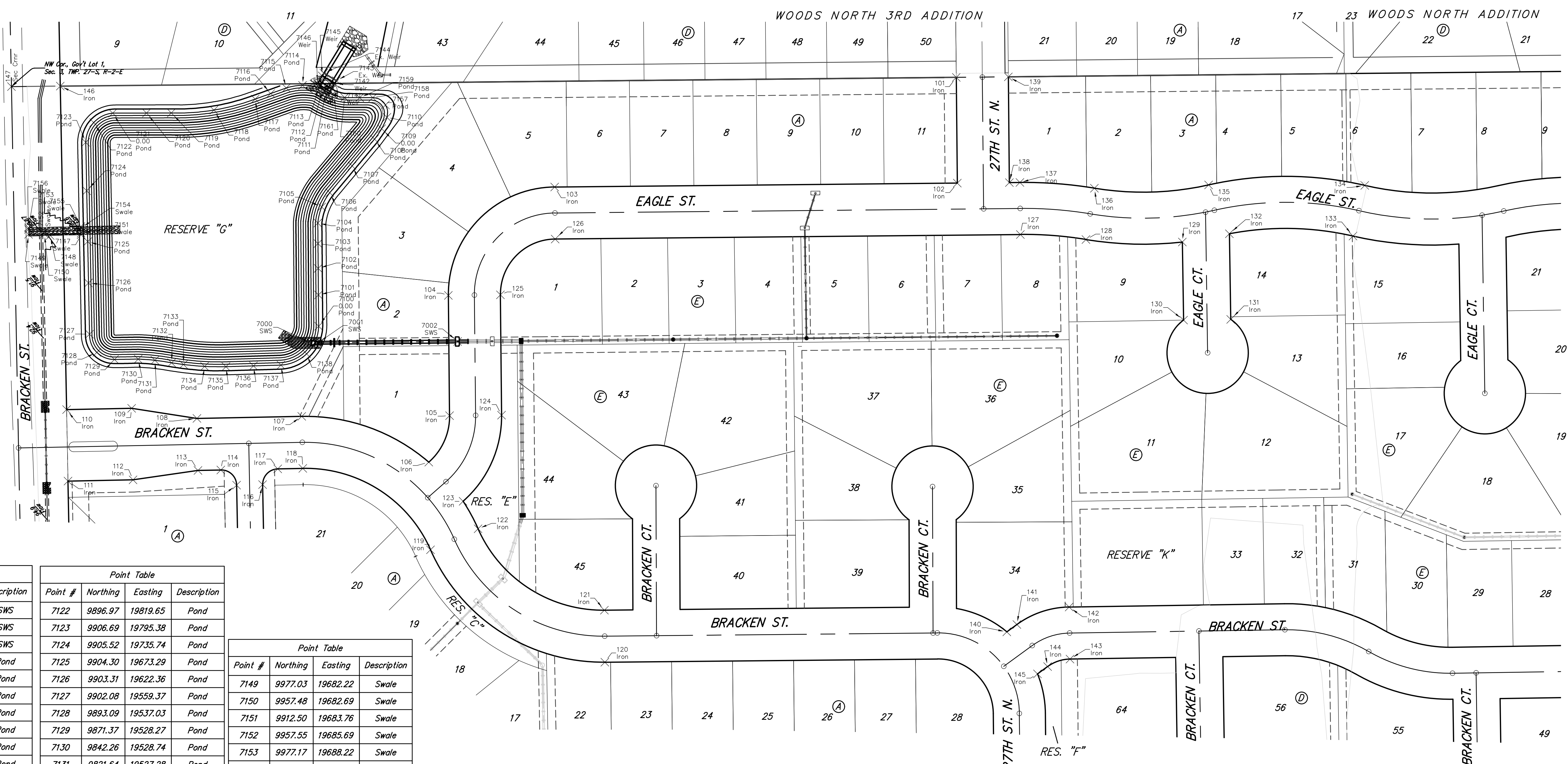
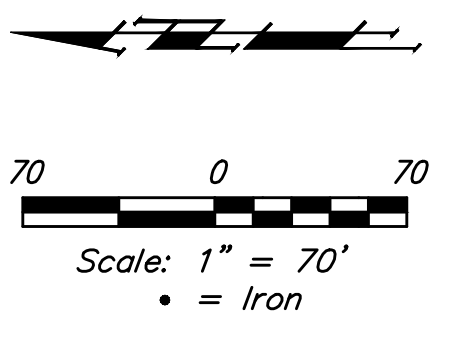


**BENCHMARKS:**

BM#1: Disc on Top of Curb  
South side of 27th St. N. and  
West of 27th Ct. N. Woods  
North 3rd Addition  
Elev. = 1397.69 NAVD88

BM#2: Northwest 1/4 Corner  
Government Lot 2, Sec. 3,  
TWP. 27-S, R-2-E  
Elev. = 1405.78 NAVD88



STORM WATER SEWER AND POND

Point #	Northing	Easting	Description
7000	9629.27	19548.68	SWS
7001	9621.10	19548.76	SWS
7002	9449.40	19550.43	SWS
7100	9620.29	19569.21	Pond
7101	9620.60	19607.70	Pond
7102	9620.86	19640.30	Pond
7103	9621.10	19670.84	Pond
7104	9621.31	19696.08	Pond
7105	9616.54	19715.97	Pond
7106	9606.66	19733.39	Pond
7107	9579.12	19766.38	Pond
7108	9551.58	19799.36	Pond
7109	9542.82	19812.14	Pond
7110	9536.30	19826.19	Pond
7111	9611.39	19857.74	Pond
7112	9615.66	19860.34	Pond
7113	9619.93	19862.94	Pond
7114	9640.10	19865.51	Pond
7115	9660.16	19862.22	Pond
7116	9679.24	19855.37	Pond
7117	9698.32	19848.53	Pond
7118	9749.12	19835.01	Pond
7119	9801.56	19831.48	Pond
7120	9832.02	19831.41	Pond
7121	9873.57	19831.32	Pond

Point #	Northing	Easting	Description
7122	9896.97	19819.65	Pond
7123	9906.69	19795.38	Pond
7124	9905.52	19735.74	Pond
7125	9904.30	19673.29	Pond
7126	9903.31	19622.36	Pond
7127	9902.08	19559.37	Pond
7128	9893.09	19537.03	Pond
7129	9871.37	19528.27	Pond
7130	9842.26	19528.74	Pond
7131	9821.64	19527.28	Pond
7132	9801.20	19524.19	Pond
7133	9786.56	19522.11	Pond
7134	9760.50	19519.71	Pond
7135	9734.33	19519.38	Pond
7136	9700.51	19520.39	Pond
7137	9666.70	19521.39	Pond
7138	9635.14	19535.19	Pond
7141	9606.42	19858.22	Weir
7142	9600.59	19867.78	Weir
7143	9598.51	19871.20	Ex. Weir
7144	9613.88	19880.56	Ex. Weir
7145	9615.96	19877.15	Weir
7146	9621.79	19867.58	Weir
7147	9912.45	19681.76	Swale
7148	9950.43	19680.85	Swale

Point #	Northing	Easting	Description
7149	9977.03	19682.22	Swale
7150	9957.48	19682.69	Swale
7151	9912.50	19683.76	Swale
7152	9957.55	19685.69	Swale
7153	9977.17	19688.22	Swale
7154	9912.64	19689.81	Swale
7155	9912.69	19691.76	Swale
7156	9977.22	19690.22	Swale
7157	9538.12	19841.35	Pond
7158	9553.66	19850.33	Pond
7159	9569.81	19850.28	Pond
7160	9588.33	19850.50	Pond
7161	9601.39	19853.35	Pond

IRONS

Point #	Northing	Easting	Description
101	8836.16	19875.28	Iron
102	8834.89	19745.23	Iron
103	9330.07	19740.41	Iron
104	9460.78	19607.13	Iron
105	9459.34	19459.17	Iron
106	9484.91	19401.97	Iron
107	9641.04	19458.30	Iron
108	9770.00	19455.78	Iron
109	9850.29	19468.21	Iron
110	9930.30	19466.64	Iron
111	9928.55	19378.66	Iron
112	9848.56	19380.22	Iron
113	9768.75	19391.79	Iron
114	9740.59	19392.34	Iron
115	9721.22	19373.72	Iron
116	9689.23	19374.34	Iron
117	9670.60	19393.71	Iron

Point #	Northing	Easting	Description
118	9639.79	19394.31	Iron
119	9482.81	19294.19	Iron
120	9268.31	19155.88	Iron
121	9268.93	19219.88	Iron
122	9424.26	19320.03	Iron
123	9442.70	19353.87	Iron
124	9395.35	19459.79	Iron
125	9396.79	19607.75	Iron
126	9329.45	19676.41	Iron
127	8757.35	19681.98	Iron
128	8676.76	19675.78	Iron
129	8558.16	19672.76	Iron
130	8556.68	19576.71	Iron
131	8498.69	19577.60	Iron
132	8500.31	19682.96	Iron
133	8348.27	19680.08	Iron
134	8333.87	19742.44	Iron

Point #	Northing	Easting	Description
135	8525.85	19743.00	Iron
136	8666.36	19738.93	Iron
137	8757.97	19745.98	Iron
138	8770.89	19745.85	Iron
139	8772.16	19875.91	Iron
140	8774.04	19193.20	Iron
141	8761.63	19202.26	Iron
142	8697.34	19223.77	Iron
143	8696.35	19159.78	Iron
144	8723.91	19150.56	Iron
145	8736.32	19141.50	Iron
146	9938.06	19864.50	Iron
147	9998.06	19863.92	Sec Cmr

Firefly Way Addition Phase I  
**COORDINATES**  
Storm Water Drain #419

Baughman Company, P.A. 315 Ellis St. Wichita, KS 67211 P 316-262-7271 F 316-262-0149  
ENGINEERING | SURVEYING | PLANNING | LANDSCAPE ARCHITECTURE

PROJECT NUMBER 468-85185	DESIGN AEG	DRAWN DJI
REVISIONS:	APPROVED	DATE 2/17
	SCALE Noted	
	SHEET	<b>15 OF 17</b>

E:\Projects\Firefly Way-Ritchie\_1604P195\Engineering\Phase I\SWD\_16-12-16-29\SWD Plans.dwg