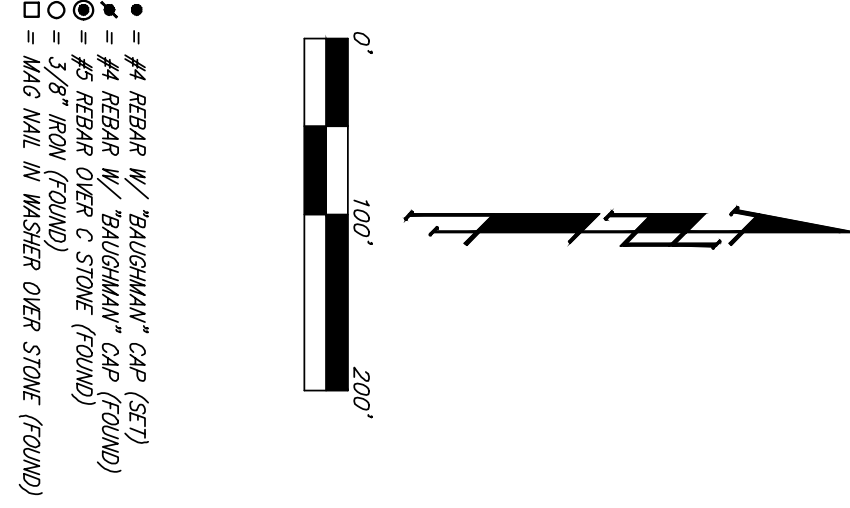
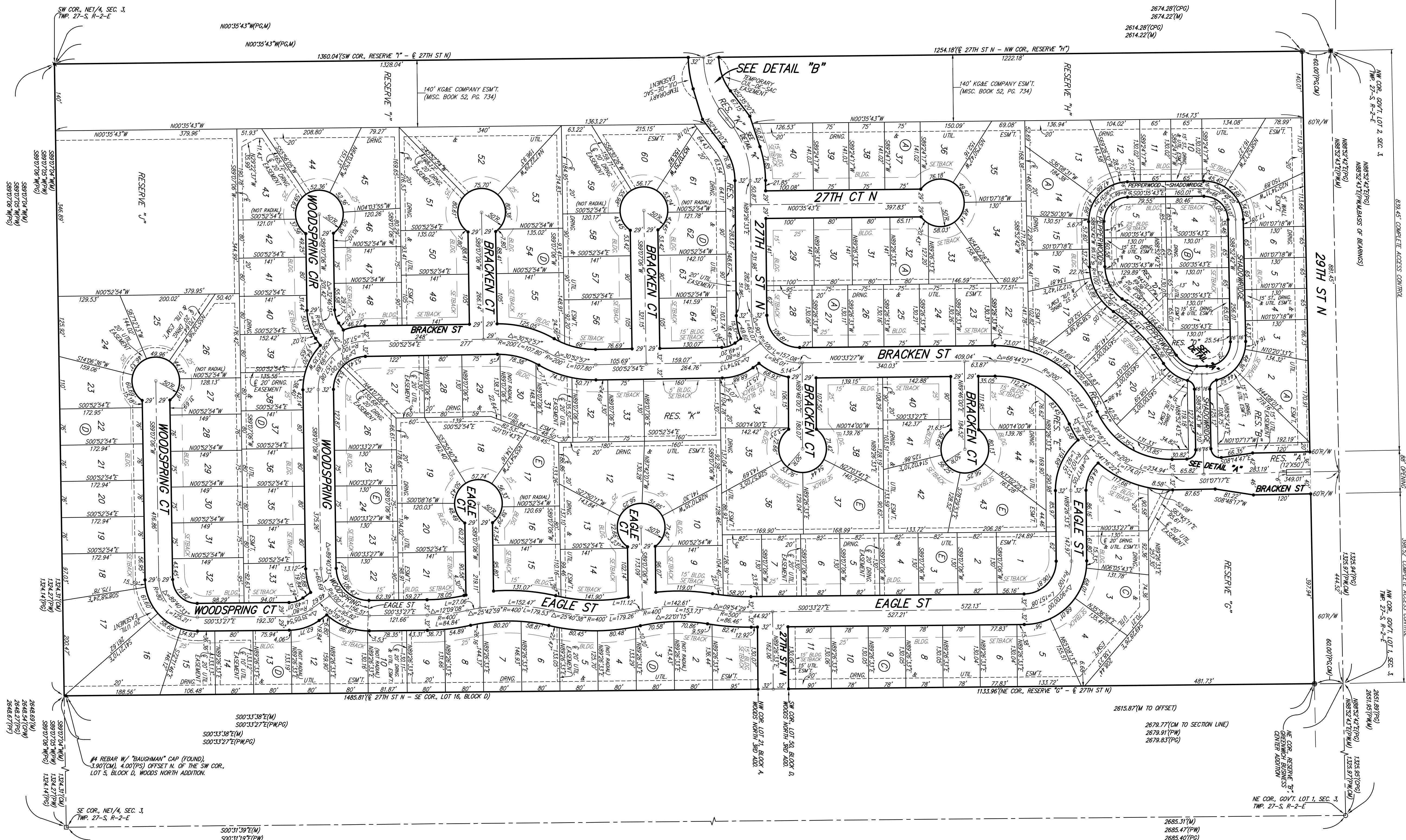


FIREFLY WAY AN ADDITION TO WICHITA, SEDGWICK COUNTY, KANSAS



REQUIREMENTS OF CHRG 2017H, CODE OF 27TH ST N AND WEST OF 27TH CT N, ETC. = 1307.69 MINORS

MINIMUM BLDG PAD ELEVATIONS FOR LOWEST OPENING TO THE STRUCTURES	LOT	BLOCK	MAJOR	ELEVATION
1-5	C	1307.5		
24-26	D	1307.8		

- (M) = MEASURED
- (S) = PREVIOUS SURVEY
- (D) = DISTANCE
- (A) = ADJUSTED INFO
- (F) = FIELD INFO PER
- (P) = THE FARMER PER
- (W) = WOODS NORTH ADDITION
- (C) = CALCULATED INFO PER
- (G) = GENTRICH BUSINESS CENTER ADDITION
- (O) = CALCULATED INFO PER GENTRICH BUSINESS CENTER ADDITION

NOTE:
A drainage plan has been developed for the plat and a portion of the plat is shown. The drainage plan is a portion of the applicable City or County Engineer and is intended to follow for the convenience of the owner.