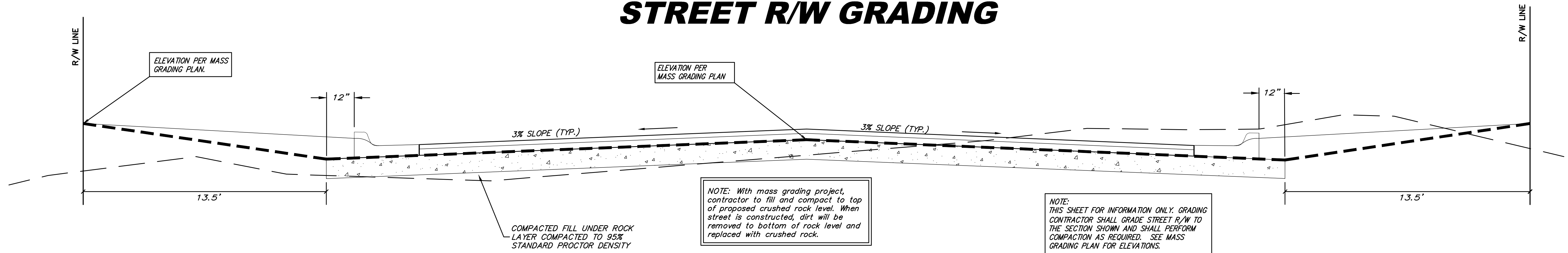
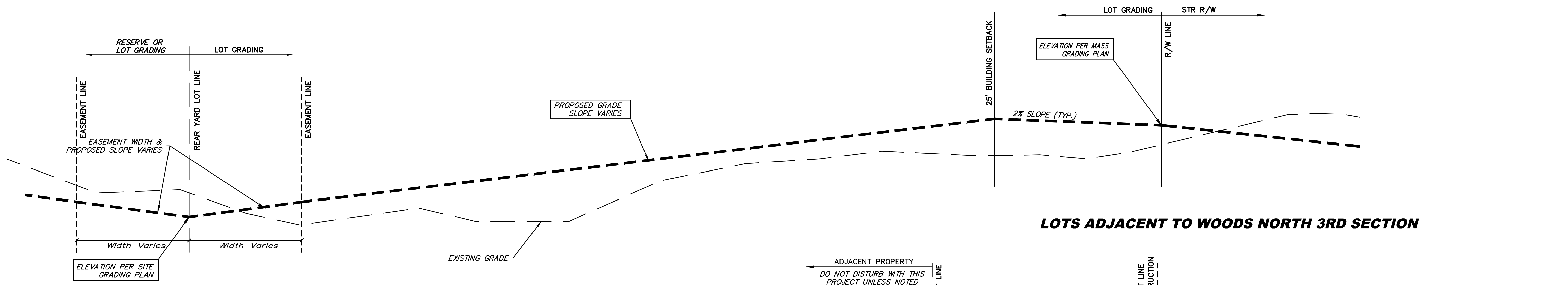


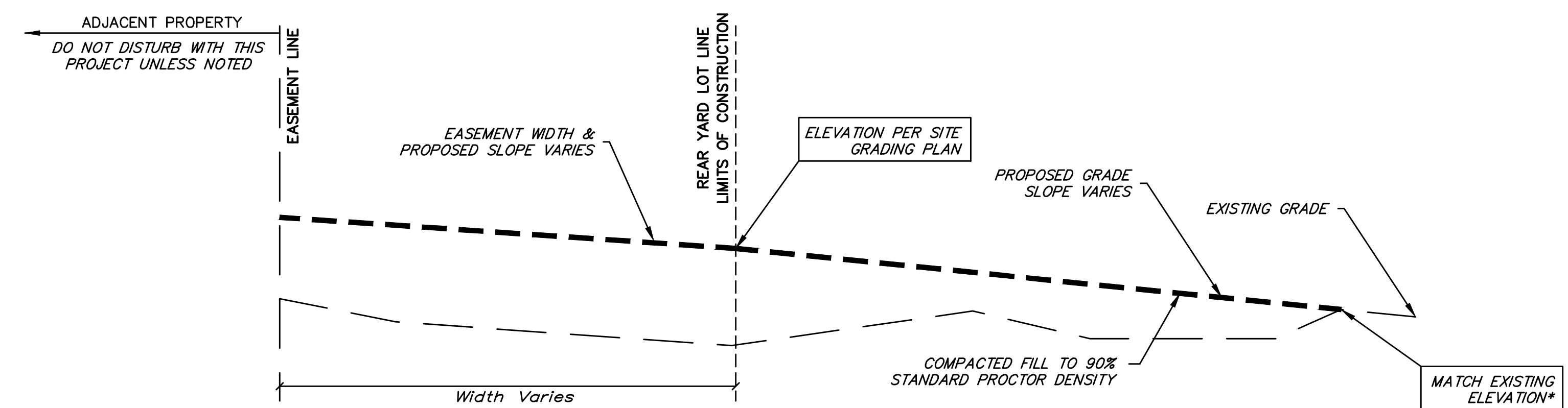
TYPICAL MASS GRADING DETAIL STREET R/W GRADING



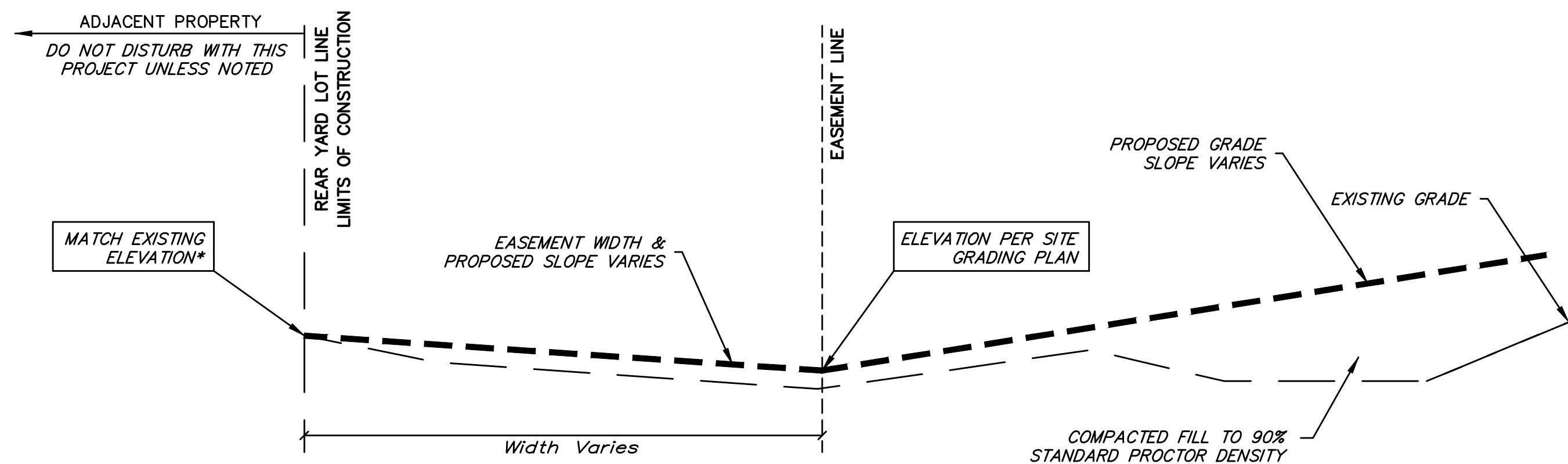
LOT FILL GRADING INTERIOR PLATTED LOT SECTION



LOTS ADJACENT TO WOODS NORTH 3RD SECTION



EXTERIOR PLATTED LOT SECTION



Mass Grading General Notes:

1. Earthwork quantities are unadjusted and are for reference only. All cost associated with mass grading shall be incidental to lump sum bid item "Mass Grading".
2. Contractor to strip top 4-6" of soil within street right-of-way and Reserve "G" before mass grading and stockpile. Topsoil is to be spread over Reserve "G" above static water elevation and areas not under proposed pavement prior to seeding.
3. Compaction of 95% Std. Proctor Density shall be obtained in all areas, moisture content at optimum to +4%.
4. It shall be the Contractor's responsibility to protect existing utilities during mass grading. Any damage done to these systems by Contractor or subcontractor shall be repaired at no additional cost to the project.
5. All areas disturbed by construction shall be seeded as indicated in the cover sheet general notes.



	Firefly Way Addition Ph. I MASS GRADING TYPICAL SECTION Storm Water Drain #419	
	Baughman Company, P.A. 315 Ellis St. Wichita, KS 67211 P 316-262-7271 F 316-262-0149 ENGINEERING SURVEYING PLANNING LANDSCAPE ARCHITECTURE	
PROJECT NUMBER 468-85185	DESIGN AEG	DRAWN DJL
REVISIONS:	APPROVED DATE 2/17	SCALE Noted SHEET
		7 OF 17