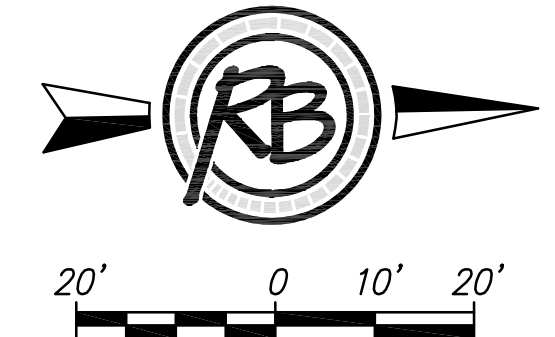


BM #4  
Sq. Cut TC East return on South side of 12th Street.  
Elev. 1306.69 NAVD 88



**CAUTION !! 10" GAS MAIN**

STA. 31+12.59 LINE 1  
VERTICAL DEFLECTION 4"  
18.76 L.F. 8" DI CL PIPE  
STA. 31+31.35 LINE 1  
VERTICAL DEFLECTION 4"  
15 L.F. 8" DI CL PIPE  
STA. 31+46.35 LINE 1  
1 - 8" MJ BEND 11.25' VERT.  
5.54 L.F. 8" DI CL PIPE  
STA. 31+51.89 LINE 1  
1 - 8" MJ BEND 11.25' VERT.

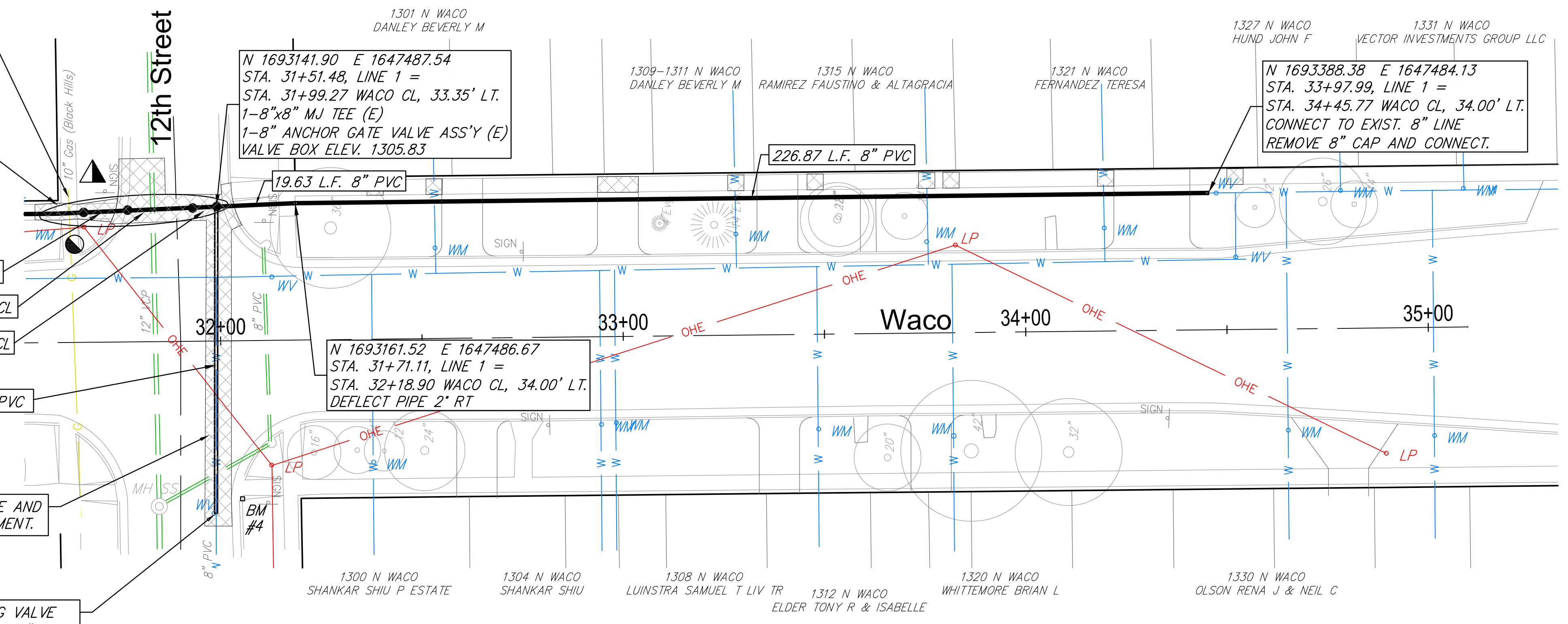
18.76 L.F. 8" DI CL  
15.00 L.F. 8" DI CL  
5.54 L.F. 8" DI CL  
76.13 L.F. 8" PVC

115 L.F. REMOVE AND REPLACE PAVEMENT.

REMOVE EXISTING VALVE AND CONNECT TO 8" MAIN

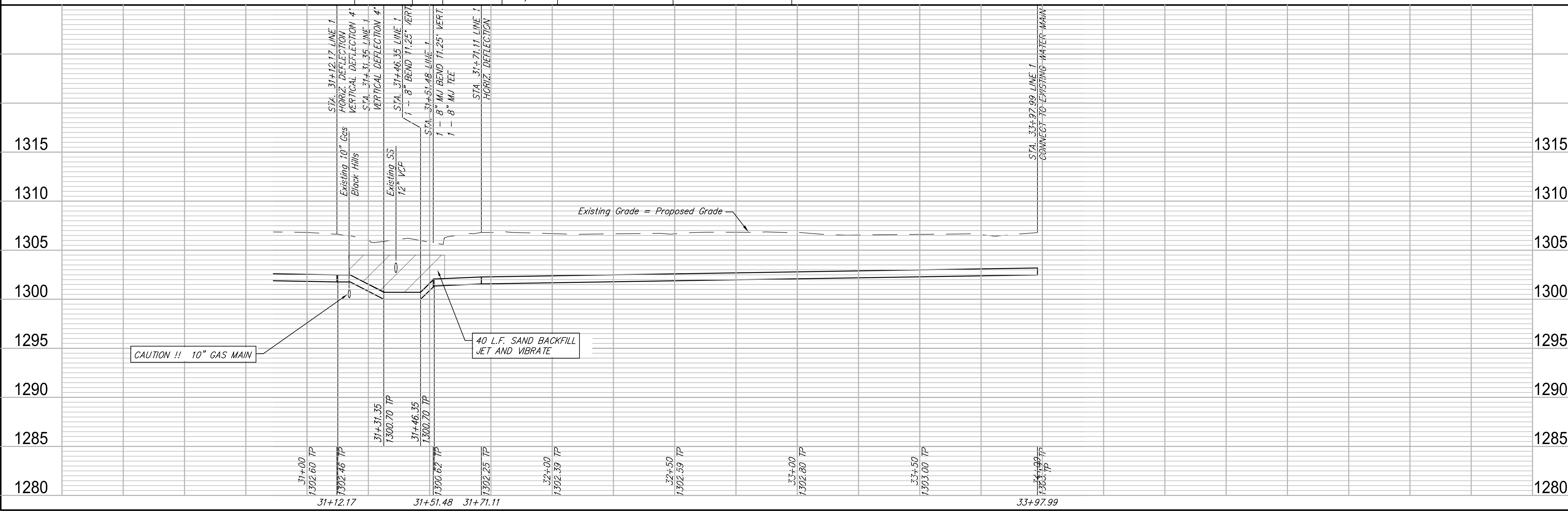
▲ Replace Wheel Chair Ramp

● Contractor to coordinate with Westar to support pole during construction.



WATER METER SUMMARY					
BL Station	Lt./Rt.	Service (Long or Short)	Service Size	Address	As Built
32+38	Rt.	Long		1300 N Waco	
32+58	Lt.	Short	5/8"	1301 N Waco	
32+94	Rt.	Long	5/8"	1304 N Waco	
32+98	Rt.	Long	3/4"	1308 N Waco	
33+28	Lt.	Short	5/8"	1309 N Waco	

WATER METER SUMMARY					
BL Station	Lt./Rt.	Service (Long or Short)	Service Size	Address	As Built
33+48	Rt.	Long	5/8"	1312 N Waco	
33+76	Lt.	Short	5/8"	1315 N Waco	
33+80	Rt.	Long	5/8"	1320 N Waco	
34+20	Lt.	Short	5/8"	1321 N Waco	



**RUGGLES BOHM**  
ENGINEERING & SURVEYING, L.L.C.  
1000 W. 17th St., Suite 100, Wichita, KS 67202  
PH: 781-644-1111 FAX: 781-644-1112

DESIGN: RA CMB  
PROJECT NUMBER: 448-90757  
DRAWING FILE: 4793W engineering base [WATER LINE] RA

REVIEW: \_\_\_\_\_ DATE: \_\_\_\_\_  
DRAWN: \_\_\_\_\_

**WACO WATER MAIN WATER LINE 1**  
Wichita, Kansas

REVISION SHEET: 11 OF 12  
JOB: 4793W