

PAVING AND INCIDENTAL SWS IMPROVEMENTS

to serve

AUBURN HILLS 16TH ADDITION PHASE IB

Onewood, from the east line of the plat west to the west line of Lot 1, Block D
 City View and City View Cir., from the south line of Onewood, southwesterly to and including the cul-de-sac
 City View Ct.. from the west line of City View, west to and including the cul-de-sac

CITY OF WICHITA, KANSAS
 James L. Armour, P.E. City Engineer

Project Number
 472-84393
 O.C.A. Number
 766130

General Notes

1. Contractor will be required to provide notice to utility companies a minimum of forty-eight (48) hours prior to any excavation, as follows:

Kansas One-Call	687-2470
The Contractor must notify the following in case of an emergency:	
Cox Communications	262-4270
Kansas Gas Service	1-888-482-4950
Westar Energy	383-8650
Aquila Energy	1-800-303-0357
SBC	268-2245
City of Wichita Water Dept.	268-4563
City of Wichita Sewer Maint.	268-4024
City of Wichita Storm Sewer Maint.	268-4090
City of Wichita Traffic Maint.	268-4034
Conoco Pipeline Co.	1-800-231-2551
Southern Star Pipeline Co.	529-6600
Phillips Pipeline Co.	1-800-766-8230

2. Utility service lines, poles, valve boxes, meters, and etcetera are to be adjusted as necessary by others prior to construction unless the plans specifically call for their adjustment by the Contractor or unless the plans specifically identify a utility to be adjusted by its owner during construction. Existing utilities and their location, as shown on the plans, represent the best information obtainable for design. The Contractor will be required to work around existing utilities within the right-of-way which do not conflict with proposed construction.

3. Rubble from the removal of miscellaneous structures and excess excavation which is to be wasted shall be disposed of on sites to be provided by the Contractor. These sites shall be approved by the Engineer as to suitability, appearance and site location. Locations, in the opinion of the Engineer, that will leave an unsightly appearance will not be approved. All disposal sites must be approved by the Kansas Department of Health and Environment. Material either stockpiled or disposed of in a flood plain would require a Kansas State Board of Agriculture permit. Any material dumped in waters of the United States or wetlands is subject to U.S. Corps. of Engineers permitting regulations. Any material buried or stockpiled beyond approved construction limits would require additional archaeological investigations unless buried in a previously approved borrow location.

4. Trees and shrubs in public right-of-way which are in direct conflict with proposed new construction shall be removed by the Contractor ONLY with the Developer or Baughman Company approval. Trees and shrubs which are not in direct conflict with proposed new construction shall be saved and protected from damage.

5. The Contractor shall give all property owners and/or tenants of developed property abutting the construction of this project a minimum of ten (10) days notice prior to start of construction.

6. The Contractor shall be responsible for preserving property irons. The Contractor will be required to re-establish any property irons which are damaged or destroyed by his construction operations. Such irons shall be re-established by a licensed land surveyor in accordance with state laws.

7. All existing and proposed erosion control measures including silt fencing, erosion control mat, straw bales, inlet barriers, and const. entrance shall be maintained throughout construction by the contractor and until project is accepted by the City of Wichita. The on-site engineer shall complete weekly reports on the status of erosion control measures. The contractor shall be required to comply with maintenance and/or replacement of erosion control measures as determined by the on-site engineer until project is accepted by City of Wichita.

8. A saw cut of at least one-half the depth of existing surface courses or one-fourth the depth of the existing total pavement thickness shall be provided at locations where proposed construction abuts the existing surface course or pavement for which partial removal of that surface or pavement is required. Sawed joint to facilitate removal within three (3) feet of existing joints will not be permitted and for such instances the limits of removal shall extend to the existing joint. This saw cut will not be paid for directly and this cost shall be considered as subsidiary to the removal of the surface or pavement.

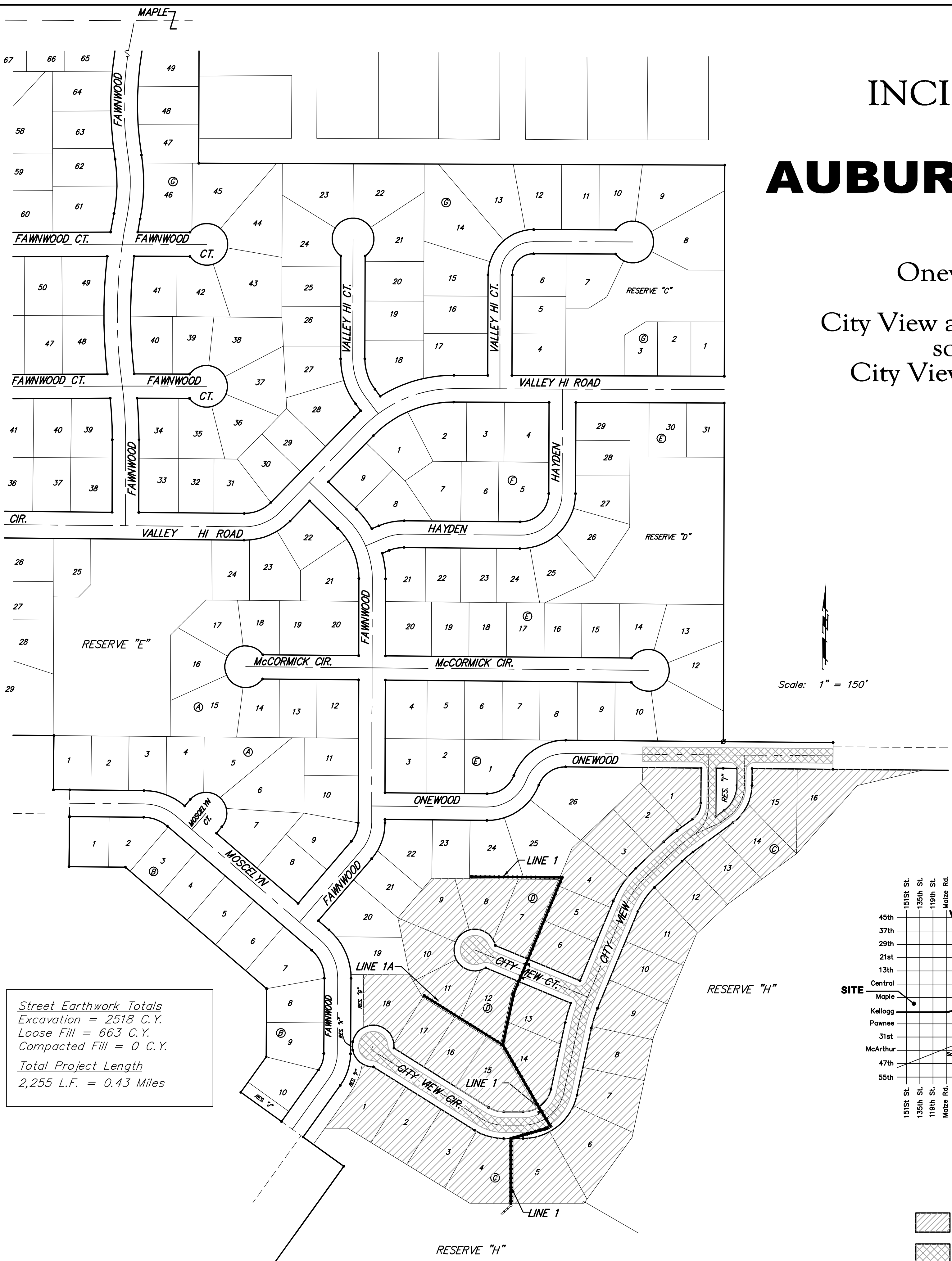
9. The contractor shall adjust valve boxes as necessary to match proposed grade. Cost to be included in bid item, "Site Clearing & Restoration."

10. All excess excavation shall remain on-site and shall be stockpiled or spread at a location determined by the engineer.

11. The developer for this project is Jay W. Russell, 722-2417.

12. All areas disturbed during construction shall be seeded at 300 lbs./acre with Rye Grass immediately following construction in that area. Contractor shall prepare ground per City Specifications.

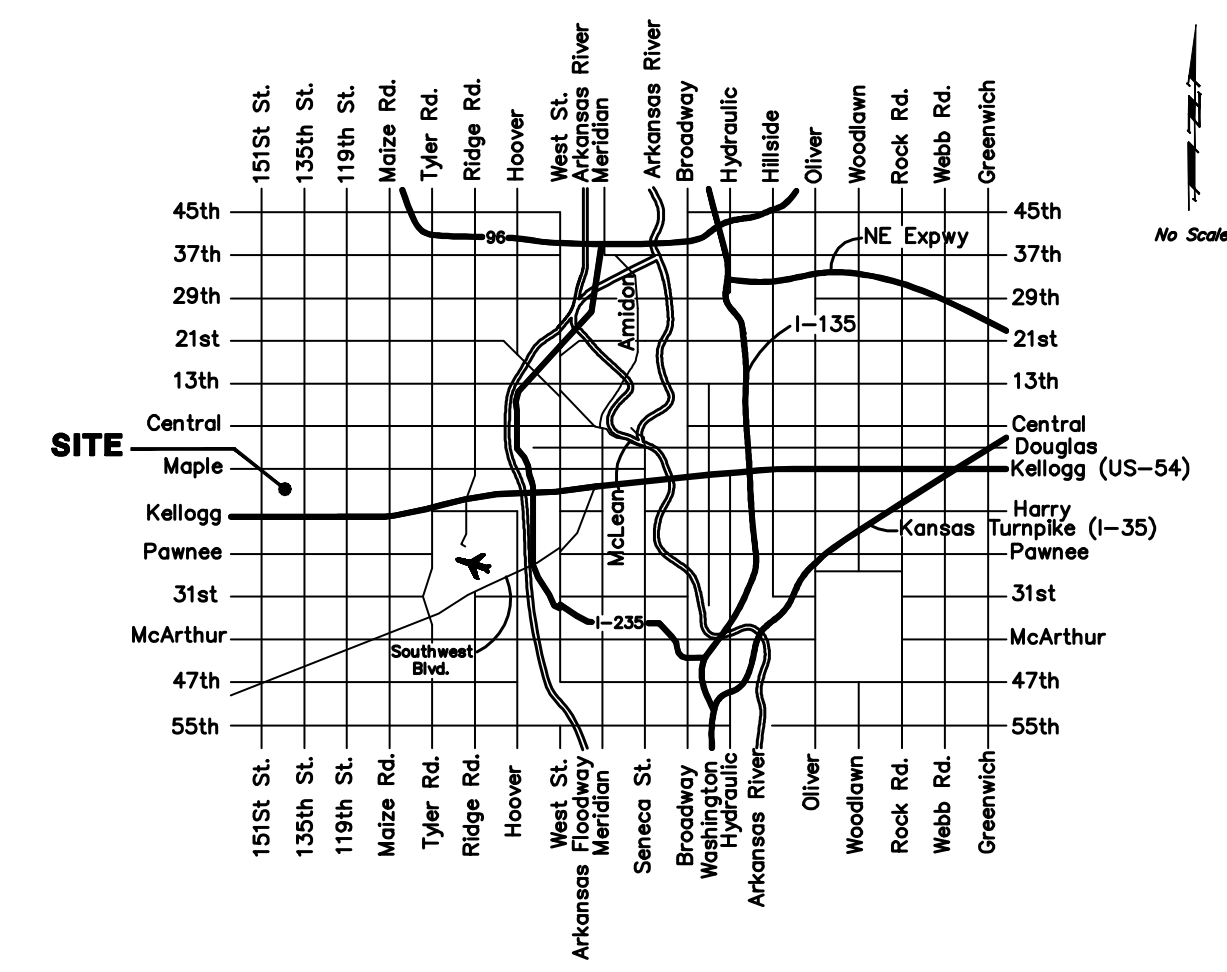
13. The Contractor shall drain any standing water in sump areas of the proposed pavement. Contractor shall overexcavate and recompact these areas as required to maintain compaction of 95% Standard Proctor Density. Cost to be incidental to pavement.



Street Earthwork Totals
 Excavation = 2518 C.Y.
 Loose Fill = 663 C.Y.
 Compacted Fill = 0 C.Y.
 Total Project Length
 2,255 L.F. = 0.43 Miles

Sheet Index

Title Sheet	1
35' Pavement Detail	2
29' Pavement Detail	3
Sign Detail	4
Miscellaneous Details	5
Onewood	6
City View Cir.	7-8
City View	9-10
City View Ct.	11
Line 1	12-14
Line 1A	15
Std. Type 1A Double Inlet Detail	16
Standard Manhole Detail	17
MH Ring and Cover Detail	18
Special Yard Inlet Detail	19
Standard Drop Inlet Detail	20
Erosion Control Plan	21
Erosion Control BMP's	22-25
Street X-Sections	26-32
Coordinate Sheet	33
Copy of Plat	34



Vicinity Map

- Benefit District
- Proposed Streets

Benchmarks

"□" Cut on Top of Curb at West Line of Lot 7, Block A, Auburn Hills 5th Addition.
 Elevation = 207.73 (City Datum)

Disc in Back of Curb, North of Front Corner Common to Lots 23 and 24, Block D, Auburn Hills 12th Addition.
 Elevation = 191.84 (City Datum)

"□" Cut on Center of Catch Basin North of Lot 7, Block A, Auburn Hills 14th Addition.
 Elevation = 193.65 (City Datum)