

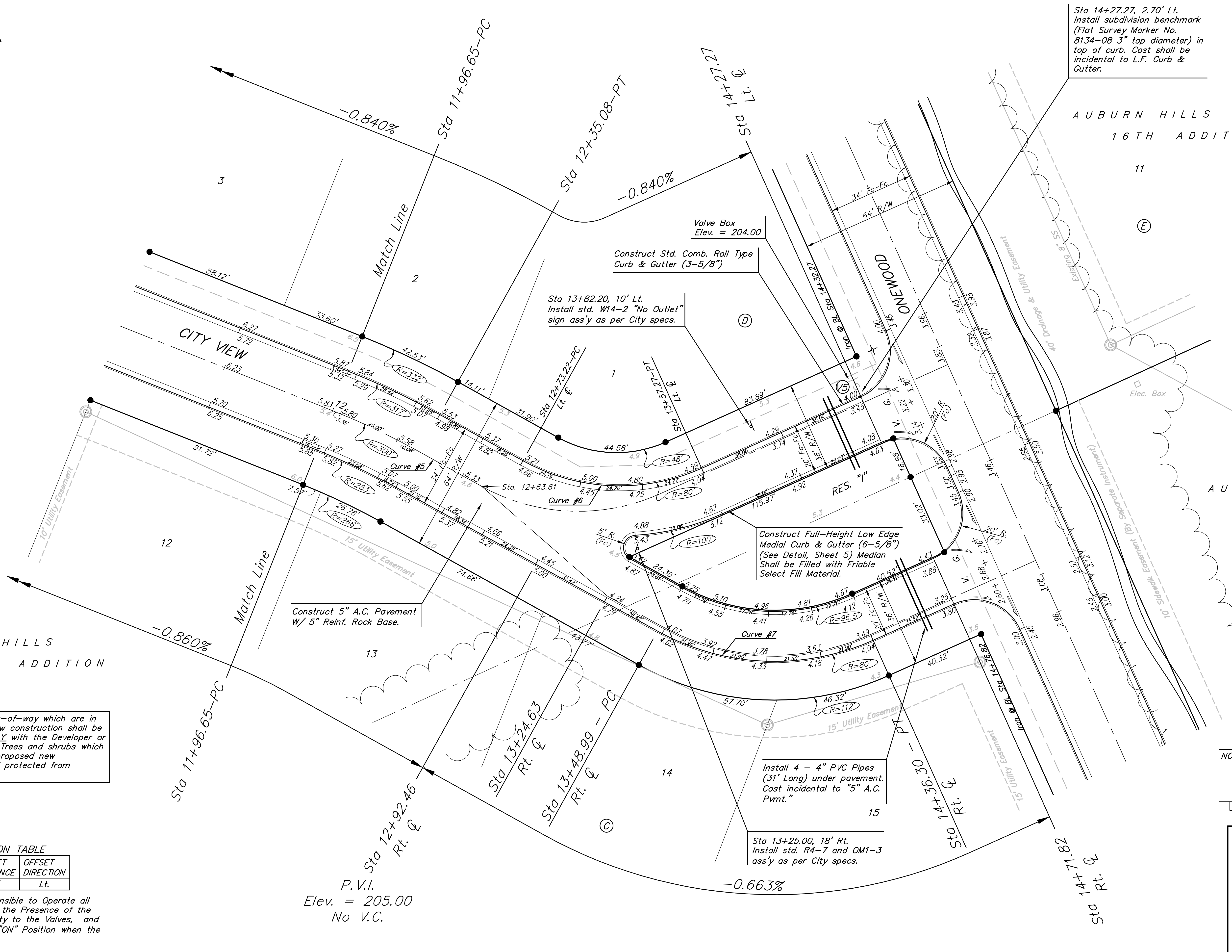
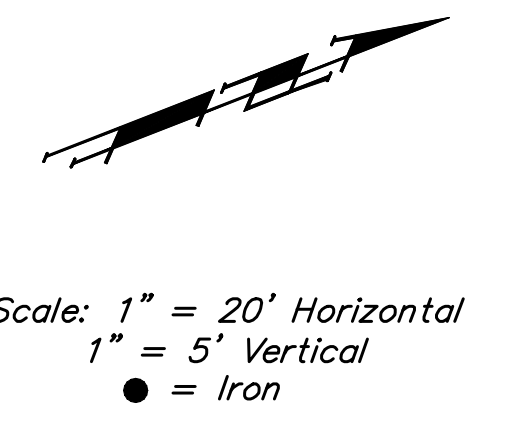
**Benchmarks:**

"□" Cut on Top of Curb at West Line of Lot 7, Block A, Auburn Hills 5th Addition.  
Elevation = 207.73 (City Datum)

Disc in Back of Curb, North of Front Corner Common to Lots 23 and 24, Block D, Auburn Hills 12th Addition.  
Elevation = 191.84 (City Datum)

"□" Cut on Center of Catch Basin North of Lot Corner Common to Lots 1 and 15, Block B, Auburn Hills 14th Addition.  
Elevation = 193.65 (City Datum)

Sta 14+27.27, 2.70' Lt.  
Install subdivision benchmark (Flat Survey Marker No. 8134-08 3" top diameter) in top of curb. Cost shall be incidental to L.F. Curb & Gutter.



AUBURN HILLS  
16TH ADDITION

AUBURN HILLS  
12TH ADDITION

AUBURN HILLS  
16TH ADDITION

Trees and Shrubs in public right-of-way which are in direct conflict with proposed new construction shall be removed by the Contractor ONLY with the Developer or Baughman Company approval. Trees and shrubs which are not in direct conflict with proposed new construction shall be saved and protected from damage.

NOTE: ROLL TYPE CURB & GUTTER TO BE CONSTRUCTED ON THE PAVEMENT SHOWN ON THIS SHEET. TOP OF CURB ELEVATIONS ARE GIVEN FOR FULL HEIGHT CURB.

WATER VALVE LOCATION TABLE

VALVE NUMBER	BASELINE STATION	OFFSET DISTANCE	OFFSET DIRECTION
V5	14+27.27	10'	Lt.

Paving Contractor will be Responsible to Operate all Water Valves on the Project, in the Presence of the Inspector, to Ensure Accessibility to the Valves, and that all Valves are Left in the "ON" Position when the Project is Completed.

P.V.I.  
Elev. = 205.00  
No V.C.

Install 4 - 4" PVC Pipes (31' Long) under pavement. Cost incidental to "5" A.C. Pvmt."

Sta 13+25.00, 18' Rt.  
Install std. R4-7 and OM1-3 ass'y as per City specs.

Construct Full-Height Low Edge Medial Curb & Gutter (6-5/8") (See Detail, Sheet 5) Median Shall be Filled with Friable Select Fill Material.

Sta 13+82.20, 10' Lt.  
Install std. W14-2 "No Outlet" sign ass'y as per City specs.

Valve Box Elev. = 204.00  
Construct Std. Comb. Roll Type Curb & Gutter (3-5/8")

Construct 5" A.C. Pavement W/ 5" Reinf. Rock Base.

		Auburn Hills 16th Addition - Phase 1B <b>City View</b> Sta. 11+96.65 to Sta. 14+71.82	
Baughman Company, P.A. 315 Ellis St. Wichita, KS 67211 P 316-262-7271 F 316-262-0149 ENGINEERING   SURVEYING   PLANNING   LANDSCAPE ARCHITECTURE			
PROJECT NUMBER 472-84393	DESIGN AEG,DMV	DRAWN DMV	APPROVED DATE 3/07/07
REVISIONS:	SCALE NOTED SHEET		
			10 OF 34