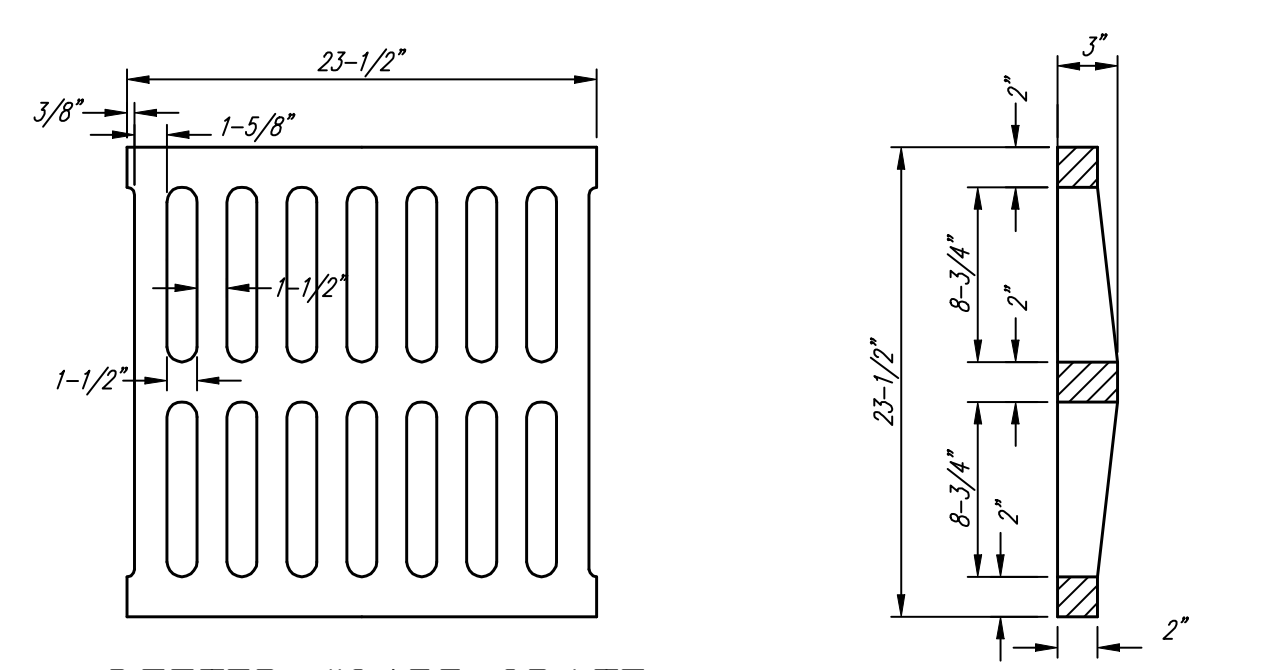
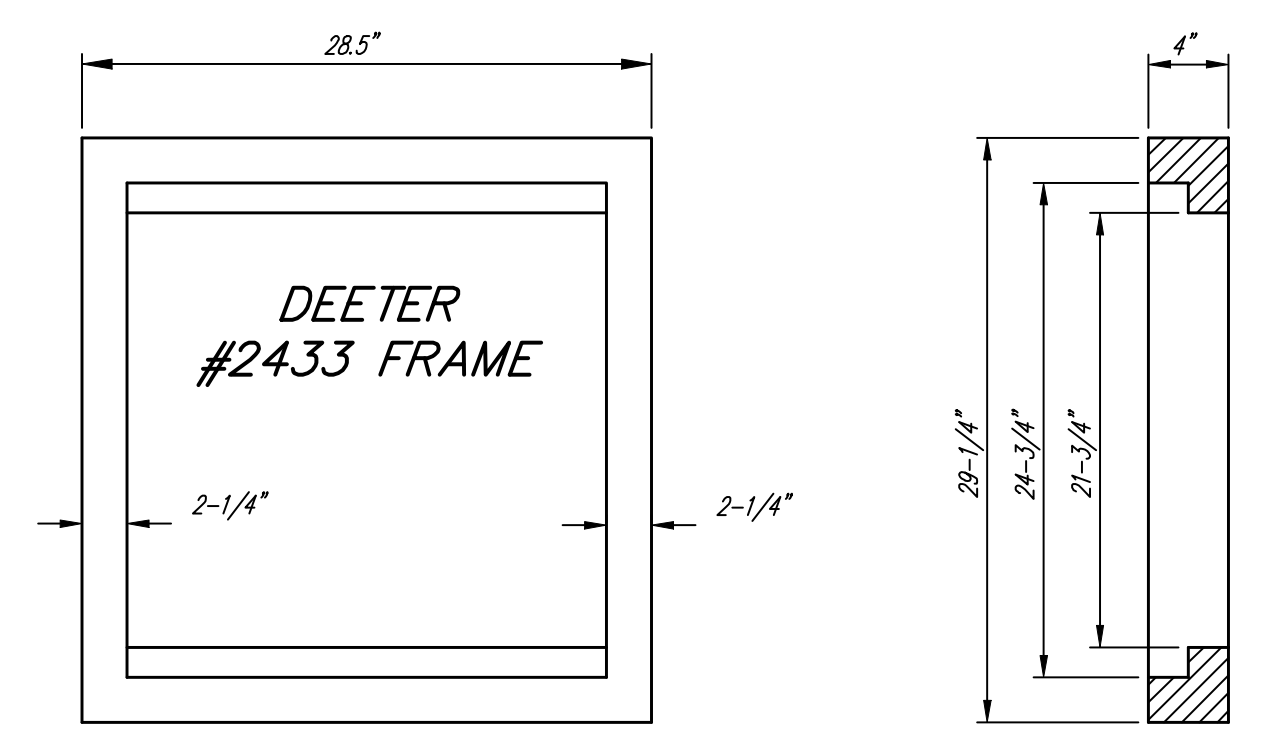
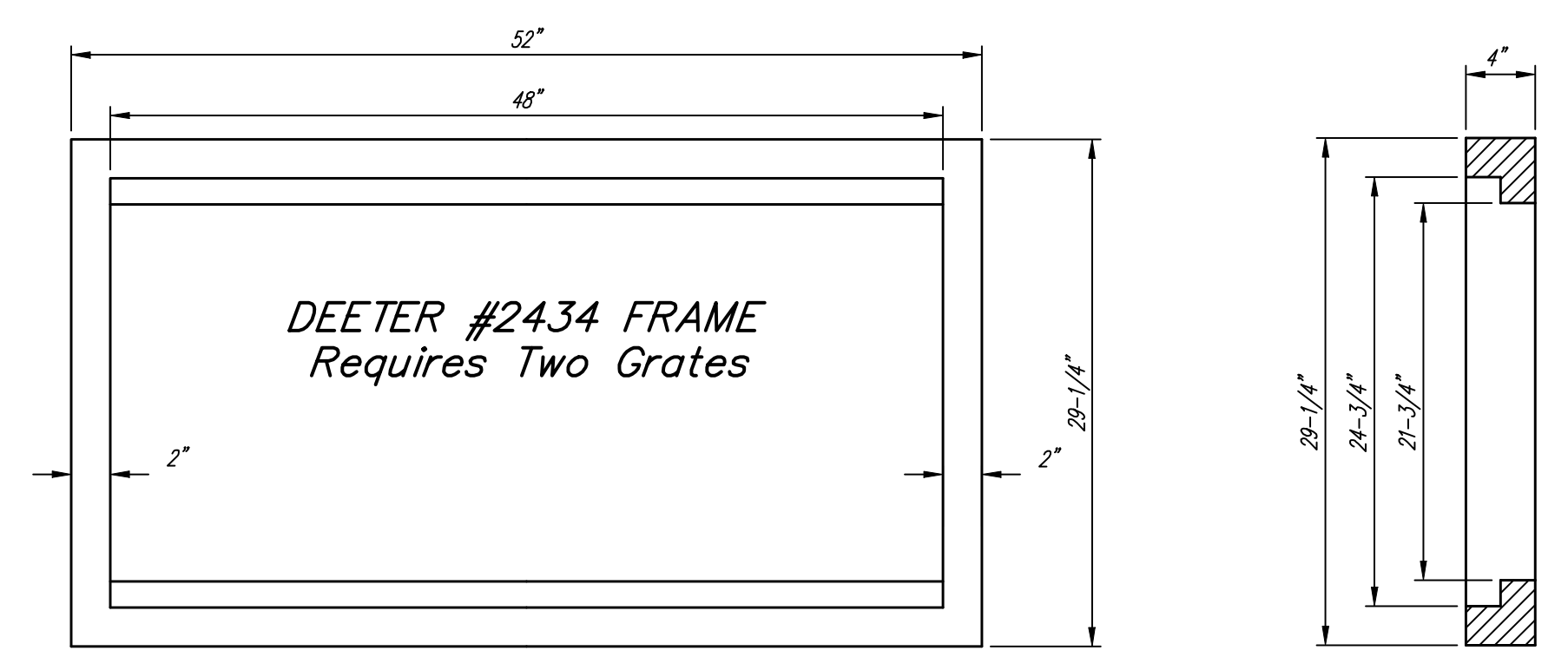


Note: Concrete apron shall be constructed around the inlet when inlet is located in an unpaved area. Where the inlet is adjacent to pavement, the pavement thickness shall be tapered to the inlet in 9 inches as indicated on the detail.

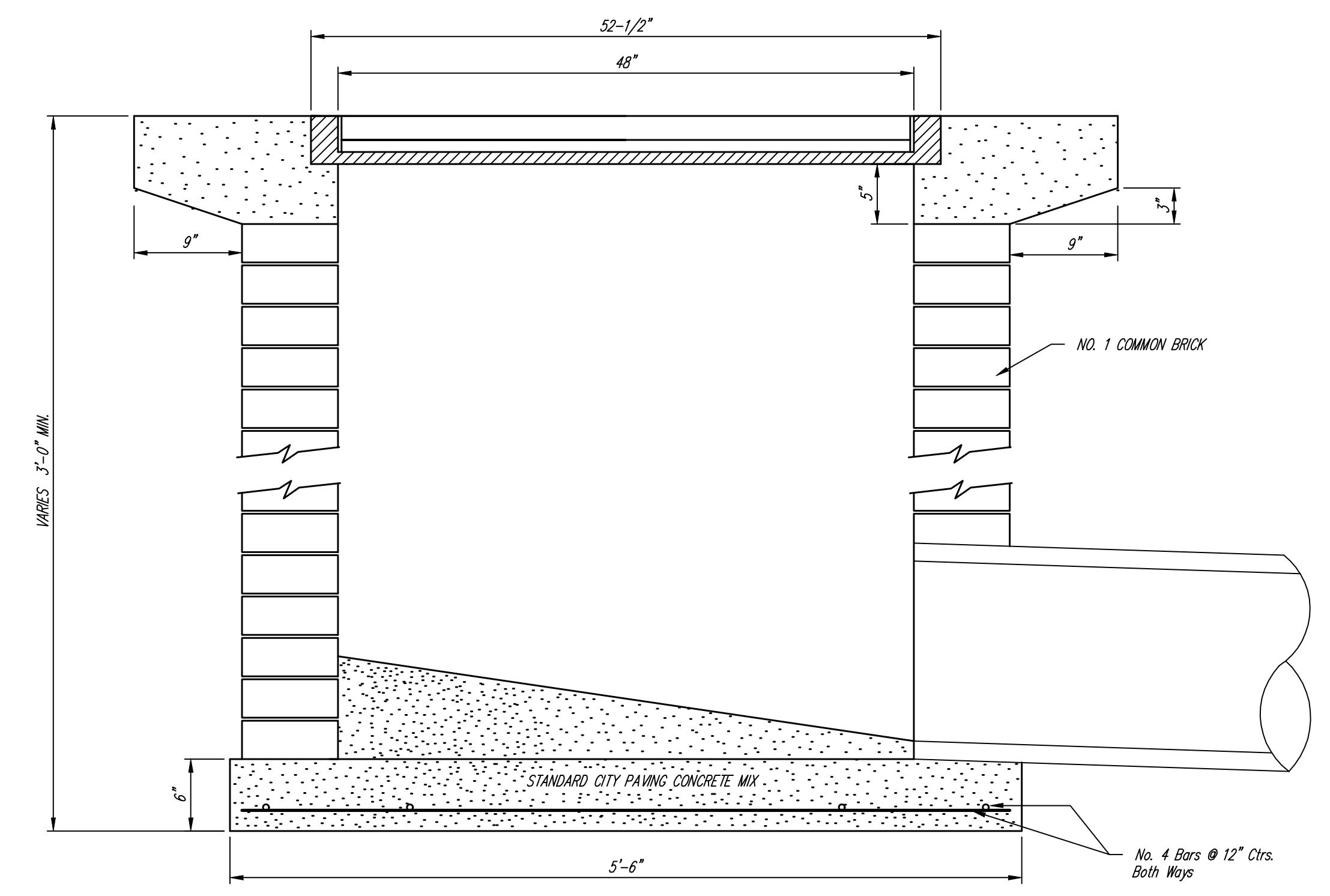
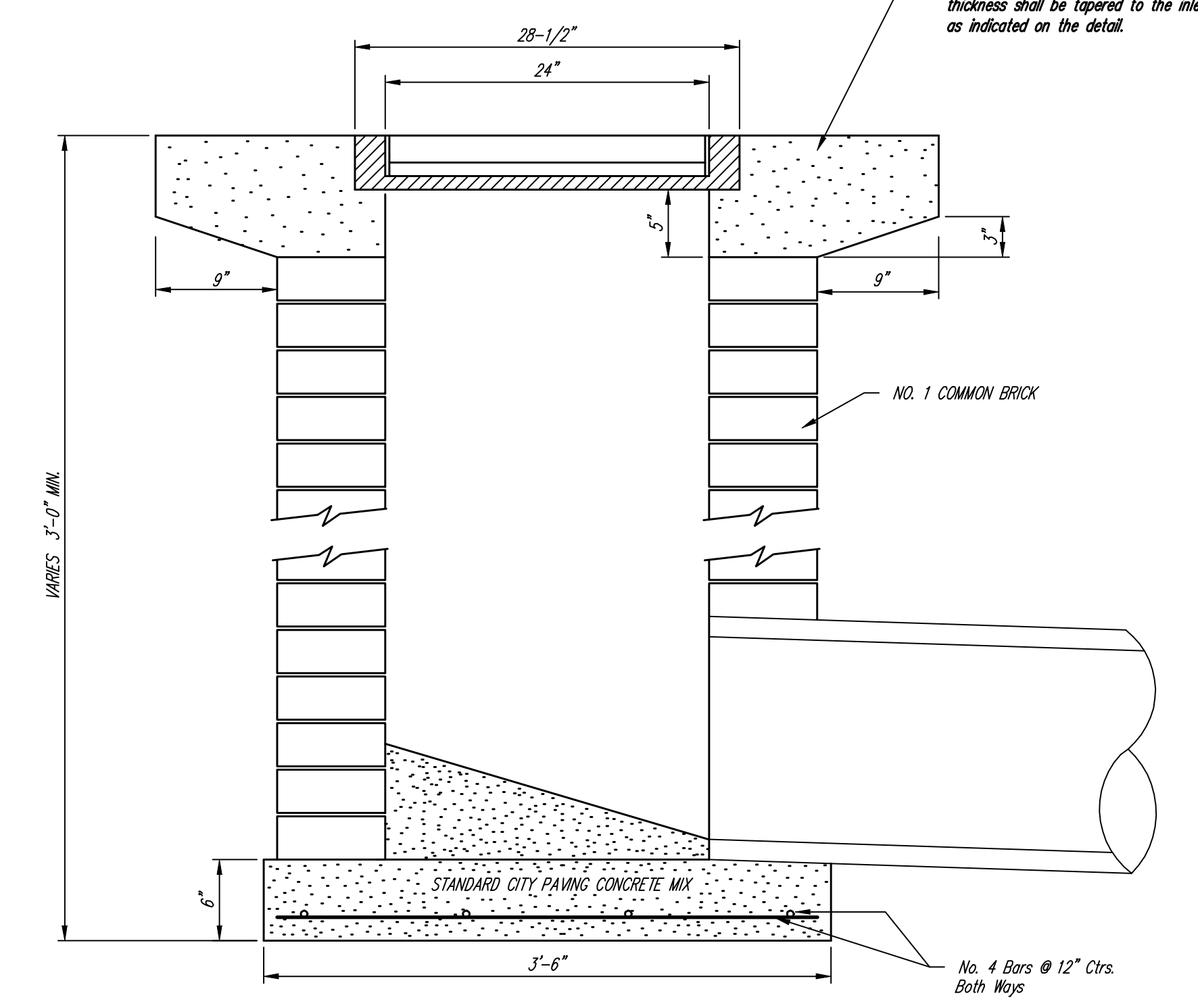
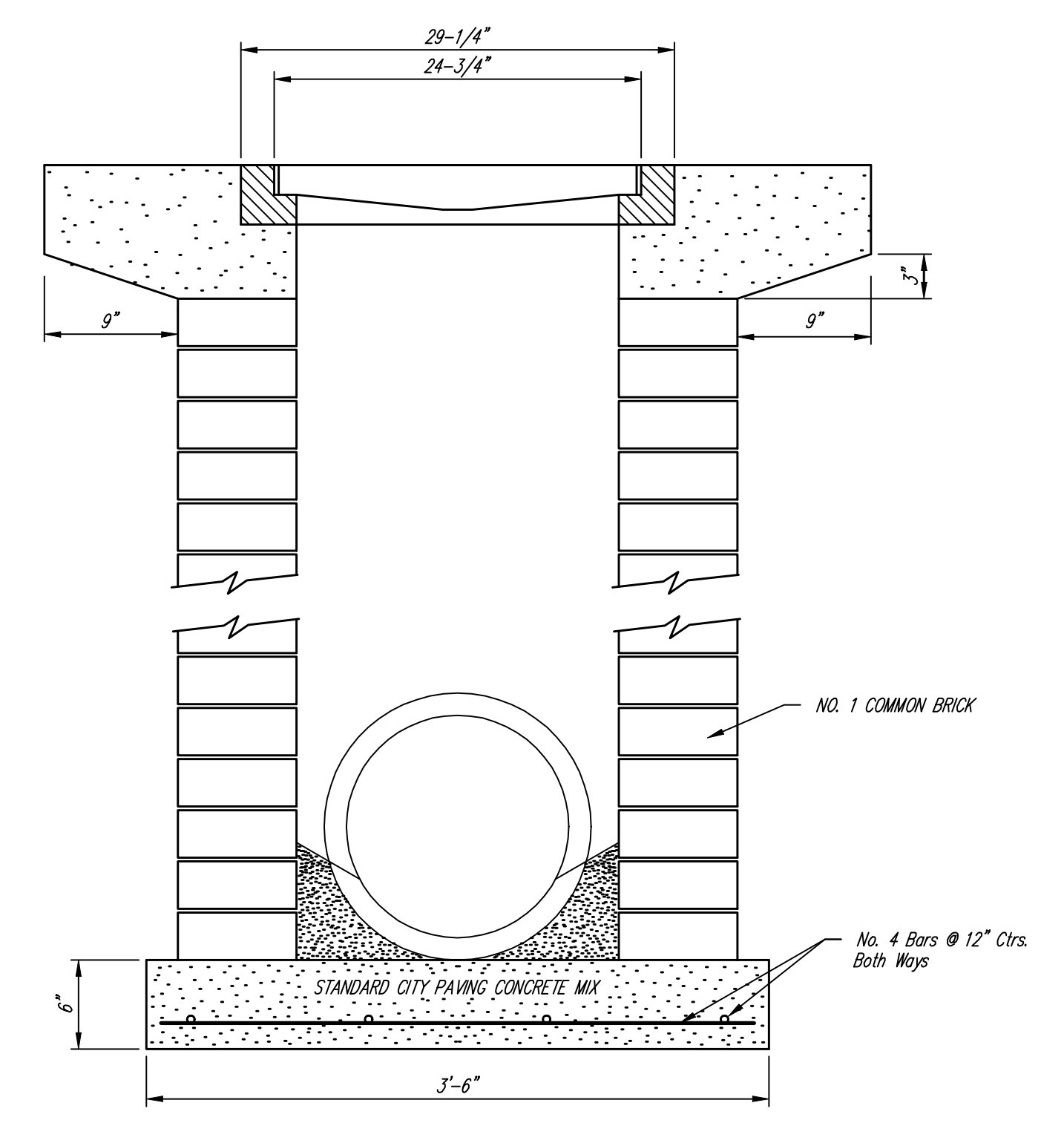


NOTE: Grates shall be imprinted on the top surface with "CITY OF WICHITA" using letters at least 1" in height. Other marking methods may be approved by the engineer.

DEETER #2433 GRATE
24" x 24" Frame and Grate Detail



Double 24" x 24" Frame Detail



	City of Wichita Standard	
	Drop Inlet Detail	
<small>Baughman Company, P.A. 315 Bliss St. Wichita, KS 67211 P 316-262-7271 F 316-262-0149 ENGINEERING SURVEYING PLANNING LANDSCAPE ARCHITECTURE</small>		
PROJECT NUMBER 472-84393	DESIGN C.O.W.	DRAWN STAFF
REVISIONS:	APPROVED	DATE 06/06
SCALE NONE		SHEET 20 OF 34
<small>\\DropIn2</small>		