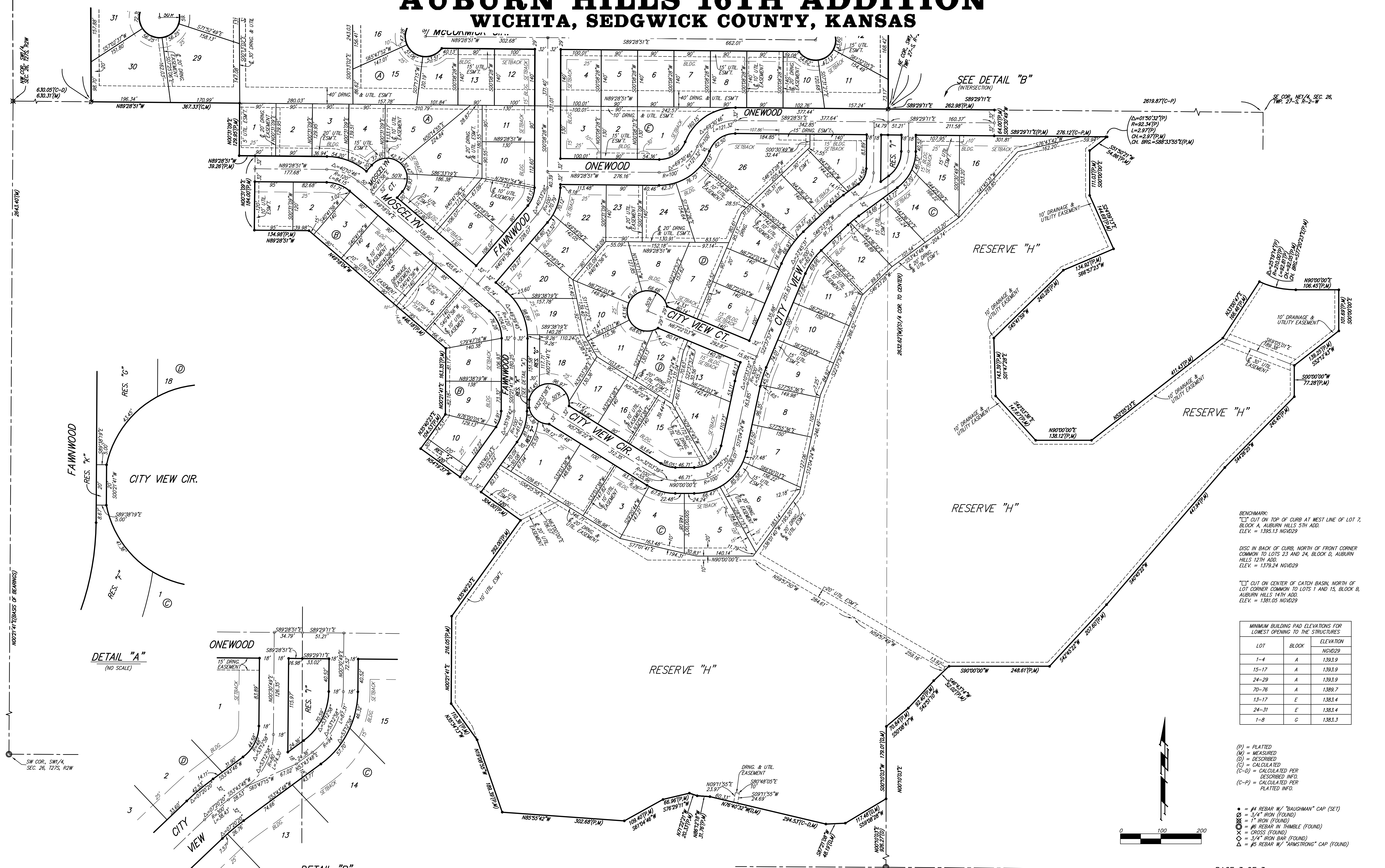
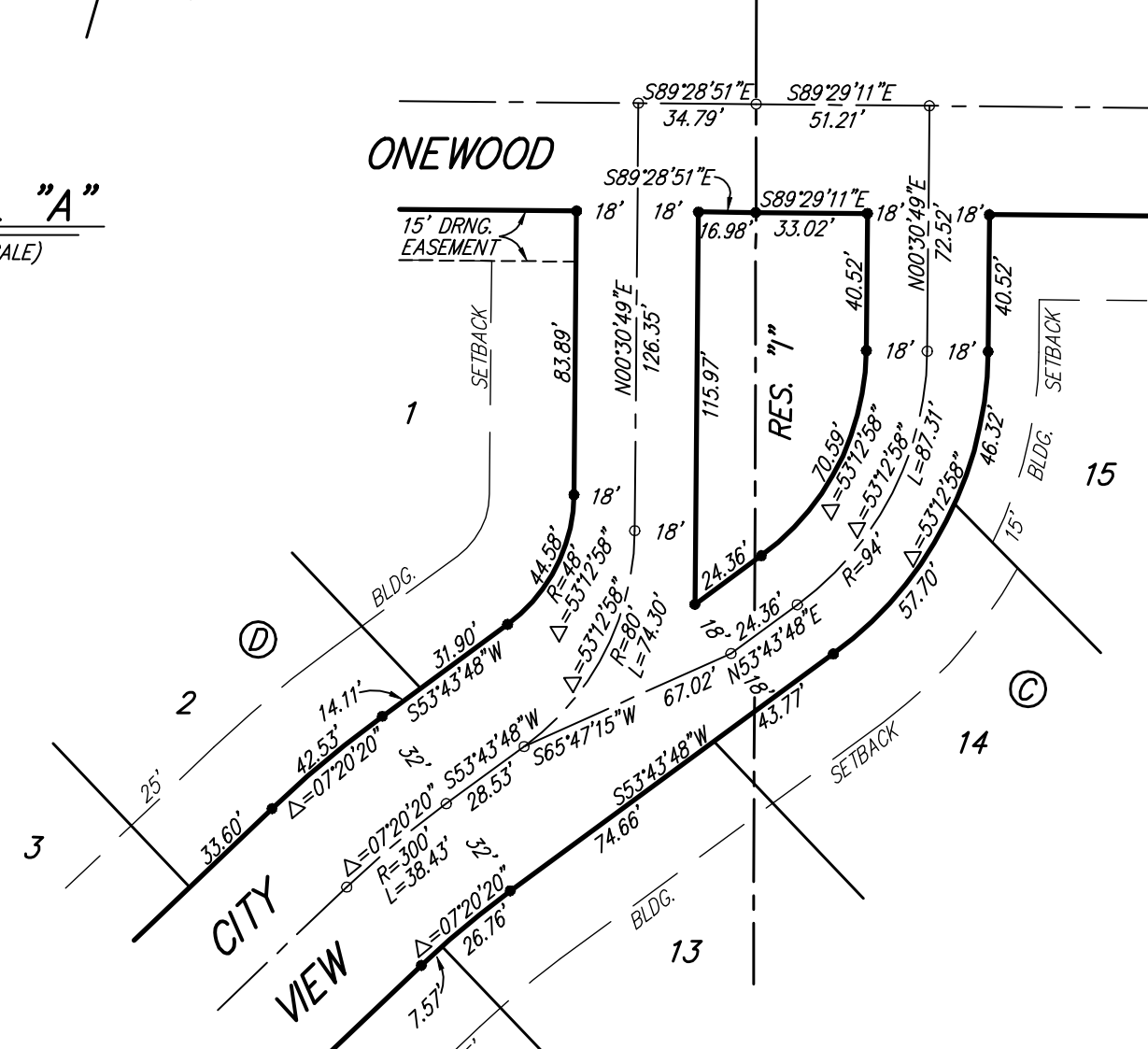


AUBURN HILLS 16TH ADDITION WICHITA, SEDGWICK COUNTY, KANSAS

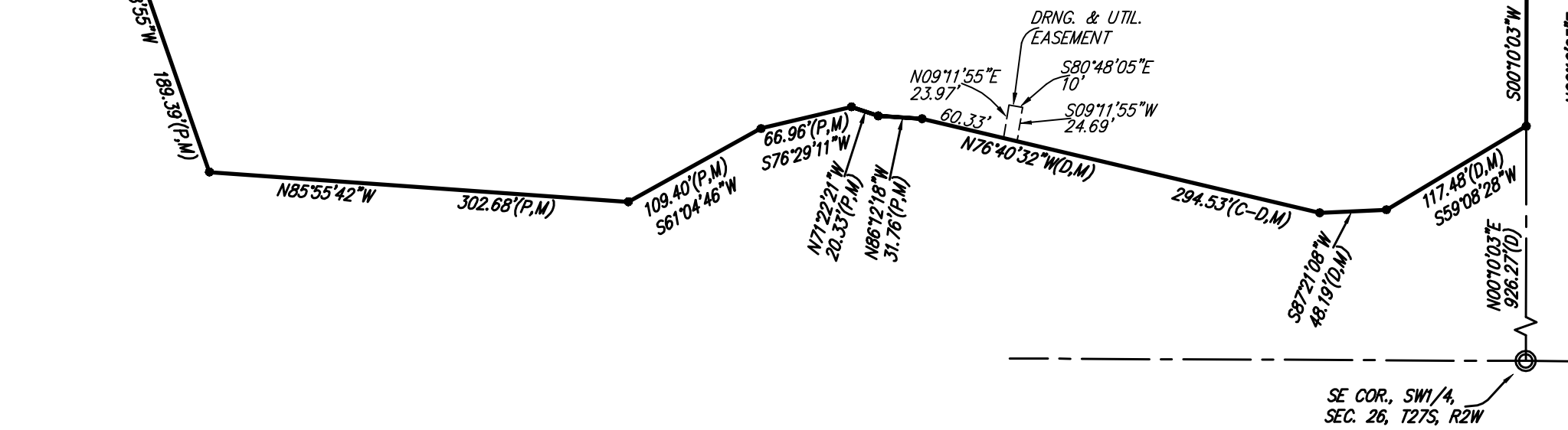


SEE DETAIL "B"
(INTERSECTION)

DETAIL "A"
(NO SCALE)



DETAIL "B"
(NO SCALE)



BENCHMARK:
 "C" CUT ON TOP OF CURB AT WEST LINE OF LOT 7, BLOCK A, AUBURN HILLS 5TH ADD. ELEV. = 1385.13 NGVD29
 "D" CUT IN BACK OF CURB, NORTH OF FRONT CORNER COMMON TO LOTS 23 AND 24, BLOCK D, AUBURN HILLS 12TH ADD. ELEV. = 1379.24 NGVD29
 "E" CUT ON CENTER OF CATCH BASIN, NORTH OF LOT CORNER COMMON TO LOTS 1 AND 15, BLOCK B, AUBURN HILLS 14TH ADD. ELEV. = 1381.05 NGVD29

LOT	BLOCK	ELEVATION NGVD29
1-4	A	1393.9
15-17	A	1393.9
24-29	A	1393.9
70-76	A	1389.7
13-17	E	1383.4
24-31	E	1383.4
1-8	G	1383.3

- (P) = PLATTED
 - (M) = MEASURED
 - (O) = OBSERVED
 - (C) = CALCULATED
 - (C-D) = CALCULATED PER DESCRIBED INFO.
 - (C-P) = CALCULATED PER PLATTED INFO.
- = #4 REBAR W/ "BAUGHMAN" CAP (SET)
 - ⊗ = 3/4" IRON (FOUND)
 - ⊙ = 1" IRON (FOUND)
 - ⊕ = #6 REBAR IN THIMBLE (FOUND)
 - ⊗ = CROSS (FOUND)
 - ⊙ = 3/4" IRON BAR (FOUND)
 - ⊕ = #5 REBAR W/ "ARMSTRONG" CAP (FOUND)

