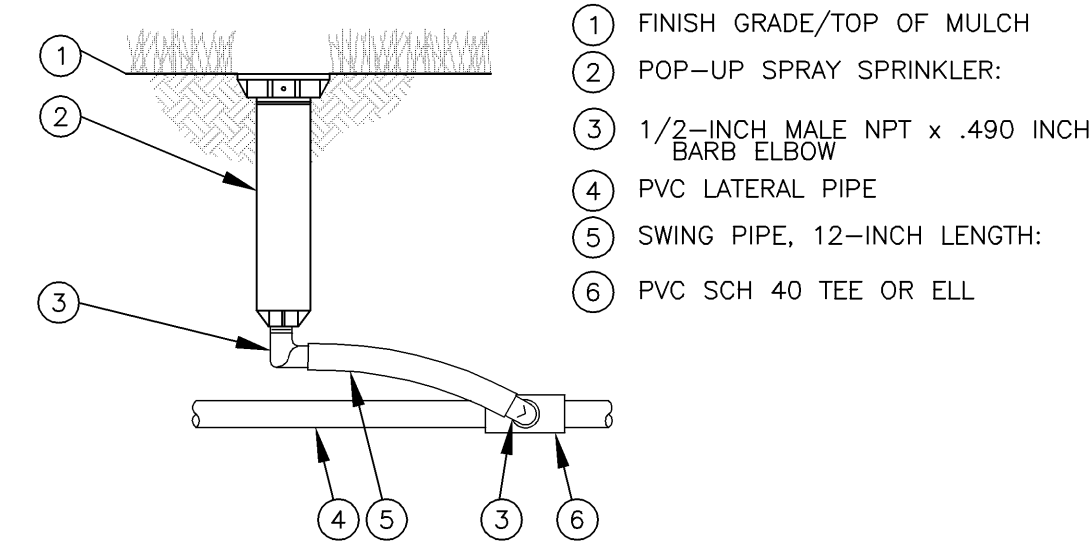
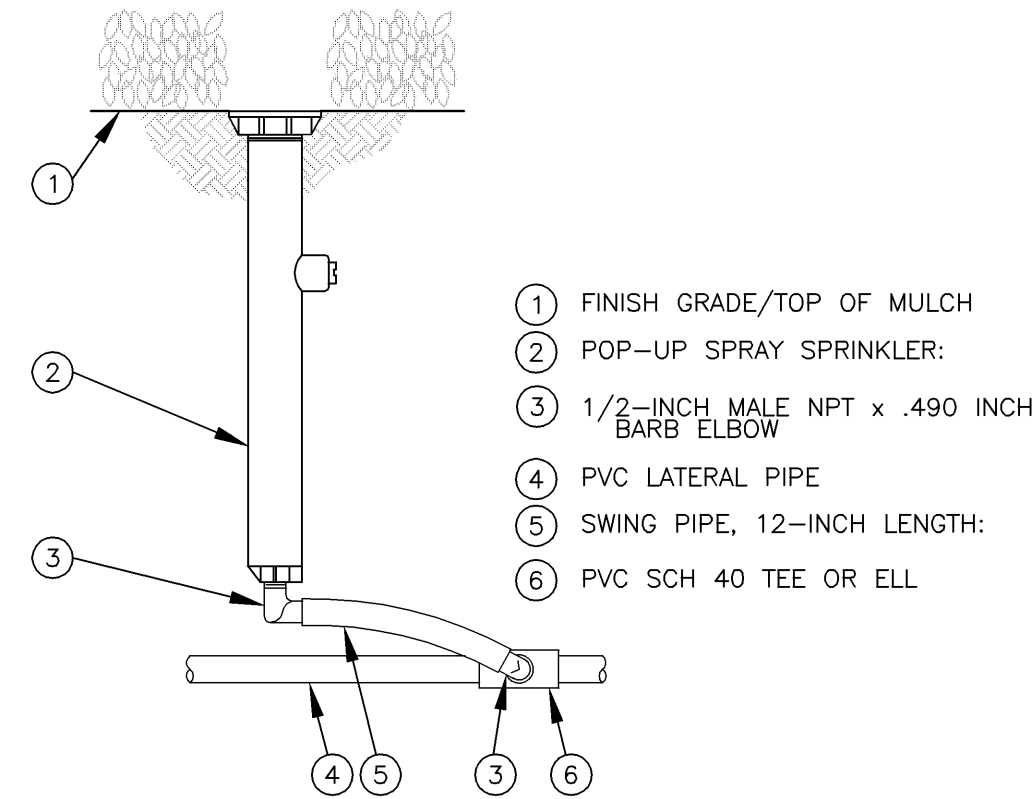


GENERAL IRRIGATION NOTES

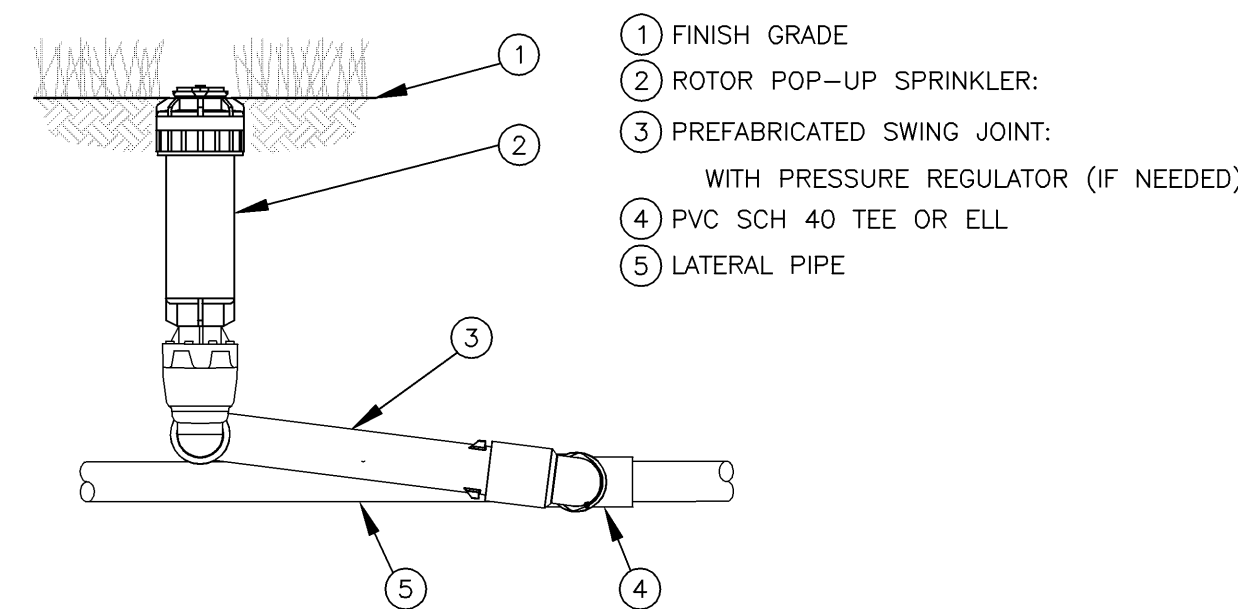
- THE DESIRED WATER COVERAGE OF THE IRRIGATION SYSTEM IS SHOWN ON THE DRAWINGS. THE CONTRACTOR IS TO INSTALL EQUIPMENT NECESSARY TO PROVIDE A COMPLETE, FUNCTIONAL SYSTEM THAT IS IN COMPLIANCE WITH THE PLANS, SPECIFICATIONS, APPLICABLE CODES, AND REGULATIONS.
- IRRIGATION PLAN IS A SCHEMATIC DRAWING TO REPRESENT DESIRED WATER COVERAGE. FIELD ADJUSTMENTS MAY BE NECESSARY TO AVOID UNFORESEEN OBSTACLES. CONTRACTOR SHALL BE RESPONSIBLE TO FIELD STAKE THE IRRIGATION SYSTEM PRIOR TO DIGGING WITH FINAL APPROVAL BY LANDSCAPE ARCHITECT OR THE CITY REPRESENTATIVE.
- IRRIGATION CONTRACTOR IS RESPONSIBLE FOR DAMAGES TO THE GROUNDS, WALKS, DRIVES, ELECTRICAL SYSTEMS, AND THEIR EQUIPMENT CAUSED BY LEAKS IN PIPING SYSTEM INSTALLED OR HAVING BEEN INSTALLED. REPAIR, AT IRRIGATION CONTRACTOR EXPENSE, ALL DAMAGES SO CAUSED. REPAIR WORK SHALL BE DONE AS DIRECTED BY THE CITY'S REPRESENTATIVE.
- DAMAGE TO THE GROUNDS, WALKS, DRIVES, AND WORK BY OTHER CONTRACTORS SHALL BE REPAIRED BY THE IRRIGATION CONTRACTOR.
- SUBMIT ALL PRODUCT INFORMATION AND SHOP DRAWINGS PER REQUIREMENTS SPECIFIED IN THE SPECIAL PROVISIONS AND SPECIFICATIONS.
- EACH ZONE OF IRRIGATION SYSTEM IS DESIGNED WITH A MAXIMUM OF 40± GALLONS PER MINUTE. IRRIGATION CONTRACTOR WILL VERIFY STATIC PRESSURE AND VOLUME OF IRRIGATION WATER SUPPLY PRIOR TO BEGINNING CONSTRUCTION. USE PRESSURE REGULATING VALVES AS NECESSARY TO ASSURE PROPER PERFORMANCE.
- ASSUMED STATIC WATER PRESSURE AT THE IRRIGATION SUPPLY TAP IN TRAFFIC MEDIAN: 48± psi @ 40 GPM.
- THIS IRRIGATION SYSTEM IS DESIGNED TO USE THE FOLLOWING ROTORS AND SPRAY HEADS:
SMALL TURF AREAS: RAINBIRD 1804-MPR @ 30psi
LARGE TURF AREAS: RAINBIRD 5000 @ 35psi
SHRUB & LANDSCAPE AREAS: RAINBIRD 1812-MPR @ 30psi
- CONTROLLER TO BE A RAINBIRD ESP-LX+ SERIES CONTROLLER, HYBRID SOLID STATE TYPE MOUNTED IN WEATHERPROOF, HIGH-IMPACT PLASTIC, LOCKABLE CABINET. CONTROLLER MUST HAVE DUAL PROGRAMMING AND BE CAPABLE OF MULTIPLE VALVES PER STATION. TO BE SIZED AND PLACED AS SHOWN ON IRRIGATION PLAN.
- MANUAL DRAIN VALVES ARE TO BE LOCATED AT THE ENDS AND LOW POINTS OF THE IRRIGATION MAINLINE. PLACE MANUAL VALVES IN LATCHABLE VALVE BOX FOR EASY ACCESS. PLACE ONE CUBIC FOOT OF GRAVEL BELOW VALVE.
- INSTALL IRRIGATION MAINLINE 18" MINIMUM BELOW FINISH GRADE UNLESS NOTED OTHERWISE. ALL MAINLINES TO BE CLASS 200 PVC. ALL LATERAL LINES TO BE SIZES AS REQUIRED TO MAINTAIN ADEQUATE PRESSURE BASED UPON STANDARD FLOW/PIPE SIZING. ALL LATERAL LINES TO BE SCH-40 PVC.
- PROVIDE PVC SLEEVES FOR IRRIGATION PIPES AND WIRING THAT CROSSES UNDER WALKS, STREETS, AND CONCRETE PADS. COMBINE PIPING WHENEVER POSSIBLE TO REDUCE QUANTITY OF SLEEVING MATERIALS. PVC SLEEVE SHALL BE AT LEAST TWICE THE SIZE OF INTERIOR PIPE.
- ELECTRICAL CONTROL AND GROUND WIRE TO BE USED FOR CONNECTING REMOTE CONTROL VALVES TO THE AUTOMATIC CONTROLLER SHALL BE 14AWG MINIMUM.
-CONTROL WIRE SHALL BE ONE COLOR AND GROUND WIRES SHALL BE ANOTHER COLOR.
-UNUSED WIRES BURIED IN THE GROUND FOR FUTURE USE SHALL BE A THIRD COLOR.
-WIRE CONNECTORS IN THE FIELD SHALL BE MADE USING APPROVED WIRE CONNECTORS UTILIZING A SEALING CEMENT TO INSURE A WATERPROOF CONNECTION.
- WHEN INSTALLING IRRIGATION PIPE ALONG CURBS OR IN ISLANDS, PLACE PIPE AS CLOSE TO CURB AS POSSIBLE TO ALLOW FOR PLANTING TREES, SHRUBS, AND GROUNDCOVERS.
- COMBINE MAINLINE, LATERAL LINES, AND CONTROL WIRING INTO SAME TRENCH WHERE POSSIBLE.
- ADJUST ALL IRRIGATION EQUIPMENT SO SIDEWALKS, PAVING AND BUILDING REMAIN DRY OF DIRECT SPRAY OR EXCESS WATER RUN-OFF.
- REFER TO WRITTEN SPECIFICATIONS AND SPECIAL PROVISIONS FOR ADDITIONAL REQUIREMENTS.



POP-UP SPRAY SPRINKLER
(TURF AREAS) NO SCALE



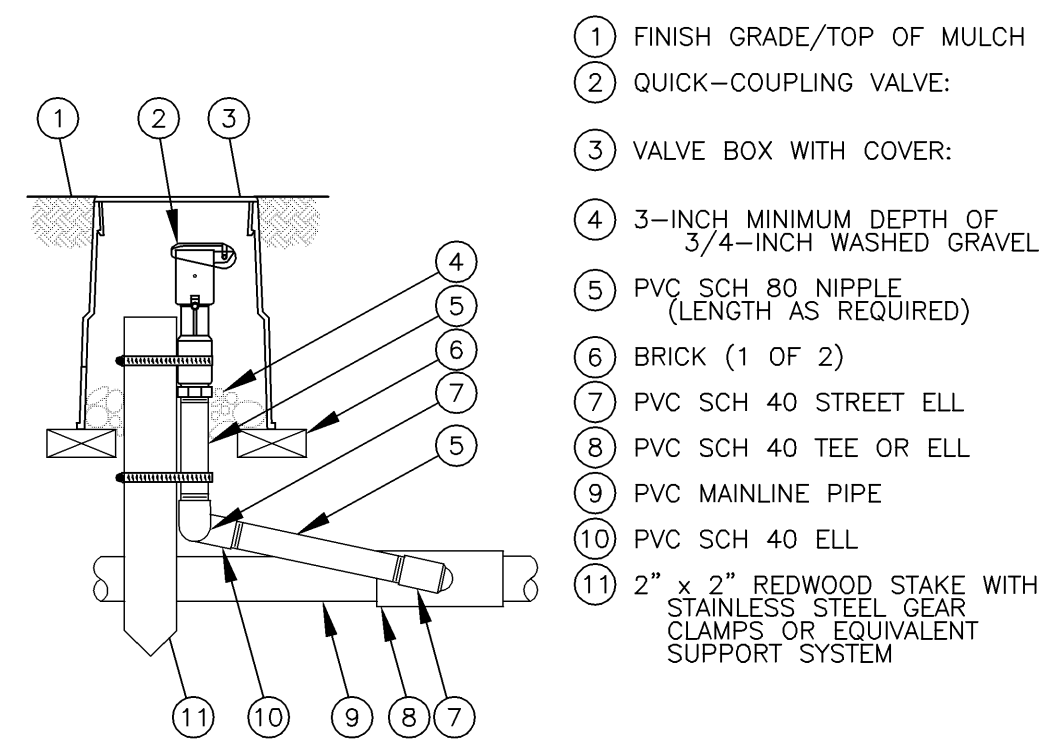
POP-UP SPRAY SPRINKLER
(SHRUB/LANDSCAPE AREAS) NO SCALE



ROTOR POP-UP SPRINKLER
(TURF AREAS) NO SCALE



MANUAL DRAIN VALVE
NO SCALE

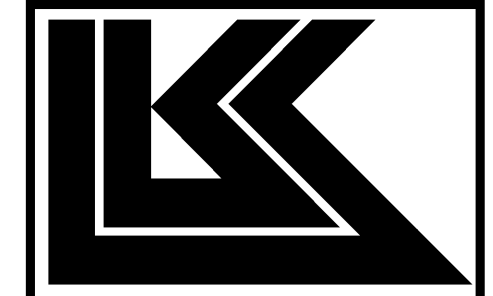


NOTE:
FURNISH FITTINGS AND PIPING NOMINALLY SIZED IDENTICAL TO NOMINAL QUICK COUPLING VALVE INLET SIZE.

QUICK-COUPLING VALVE
NO SCALE

FHWA REGION NO.	STATE	PROJECT NUMBER	FISCAL YEAR	SHEET NUMBER	TOTAL SHEETS
7	KANSAS	TE-0254-01	2005	16	21
FED. AID NO.					

PRINTS ISSUED		
DATE	ITEM	NO.
1/10/05	FIELD CHECK SET	
6/13/05	OFFICE CHECK SET	
9/29/05	REVISED OFFICE CHECK	
11/29/05	FINAL PLANS	
1/22/07	FOR CONSTRUCTION	



LAW/KINGDON, INC.
ARCHITECTS • ENGINEERS • PLANNERS
LANDSCAPE ARCHITECTS
345 RIVERVIEW #200, WICHITA, KS 67203
Phone (316) 268-0230 Fax (316) 268-0205
Copyright © 2007

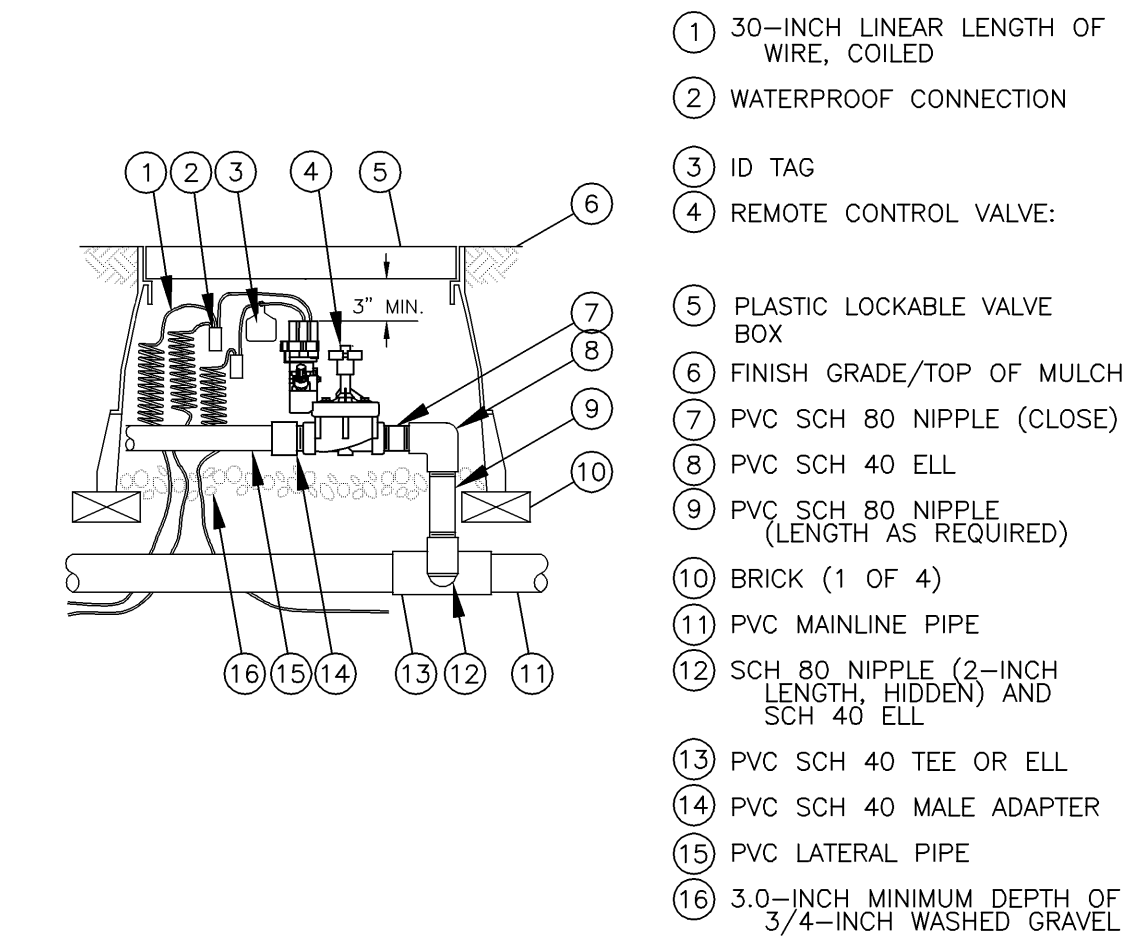
DRAWN		CHECKED	
JAB	JAB	JAB	JAB

K-96 TRAILHEAD LANDSCAPE PROJECT
WICHITA, KANSAS
GROVE PARK

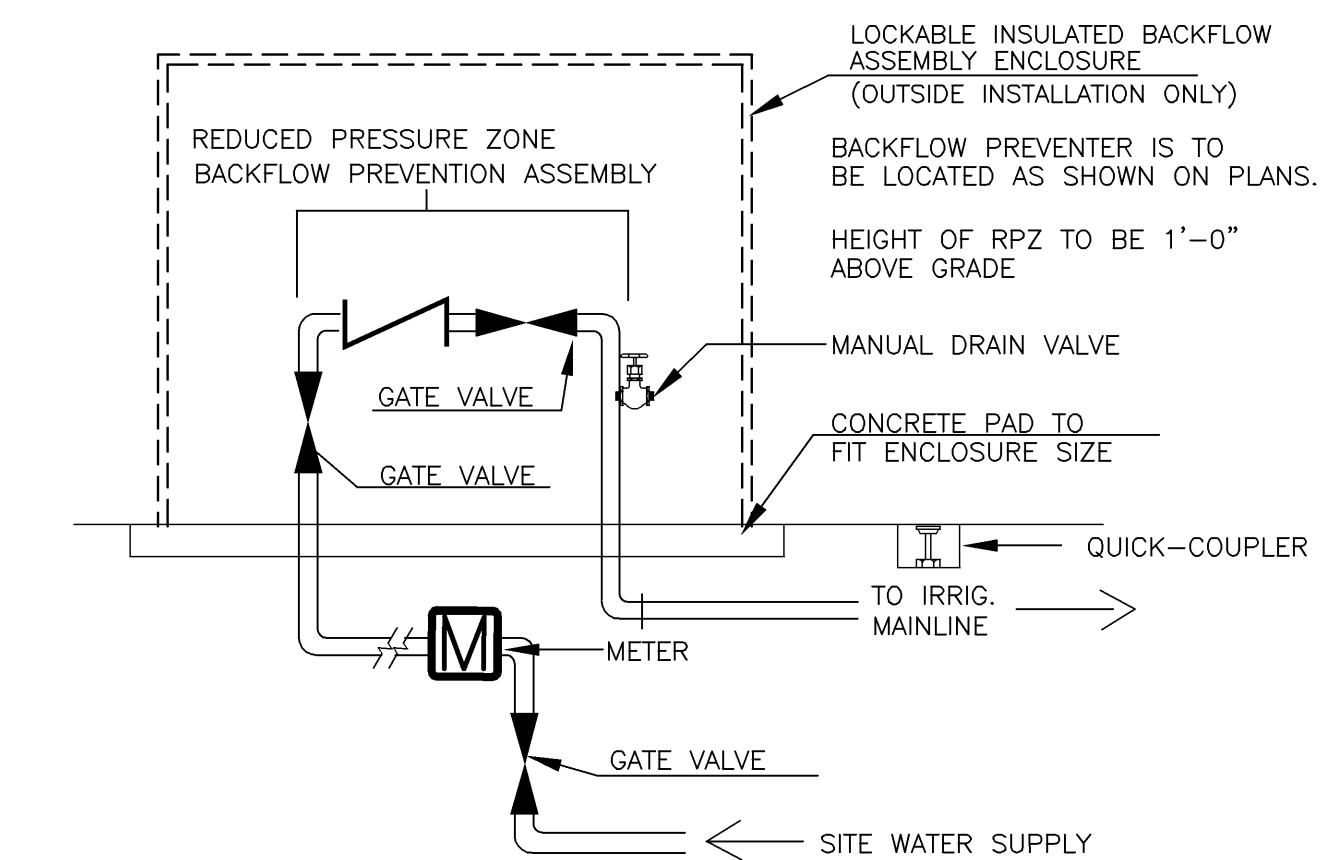
PROJECT NUMBER 044150

IRRIGATION NOTES & DETAILS

SHEET TITLE
SHEET NUMBER
IR3.1
OF 3 SHEETS



ELECTRIC REMOTE IRRIGATION VALVE
SPRAY AND ROTOR SPRINKLER ZONES NO SCALE



PRZ BACKFLOW PREVENTER
LOCATION AS SHOWN ON IRRIGATION PLAN NO SCALE