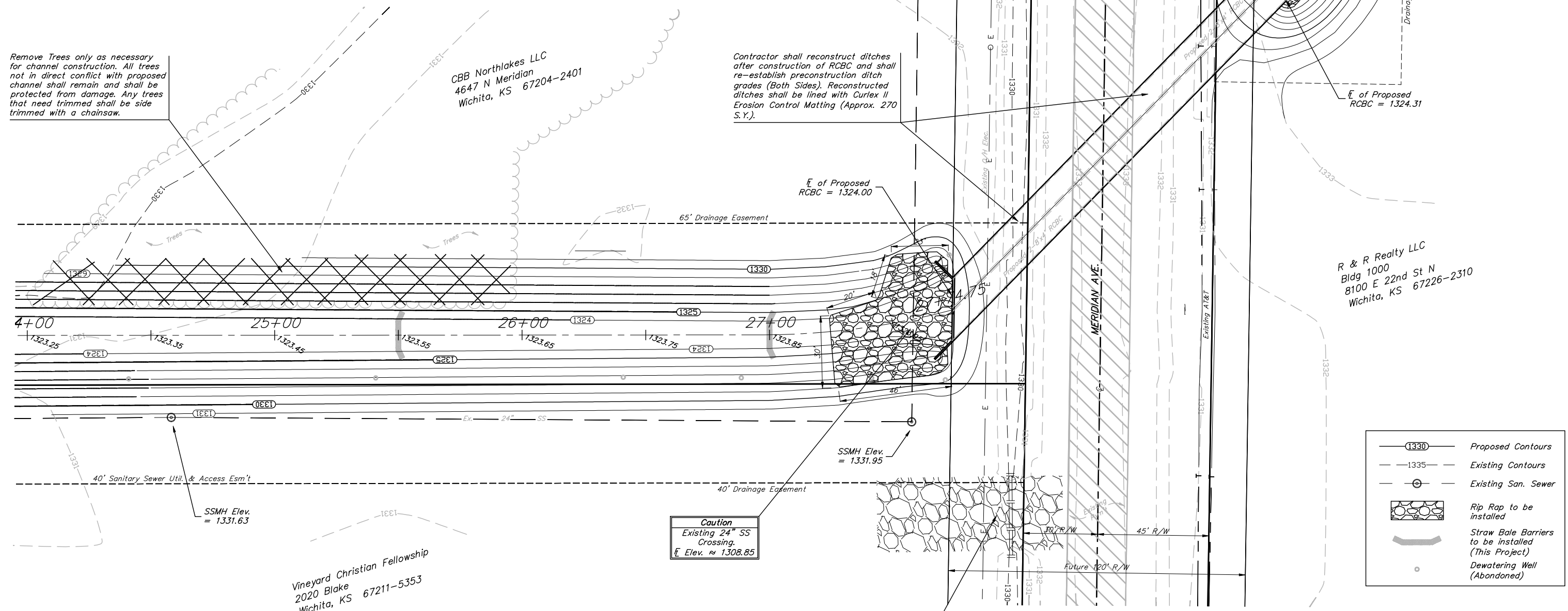


COW Benchmark at the Intersection of Meridian and 53rd St N, NE Corner, Top of Concrete Headwall.  
 44' North of Centerline  
 37' East of Centerline  
 50.90' NE of Section Corner  
 9' NE of and radial to curb  
 26' East of Section Line  
 Elev. = 1331.37 NGVD29

COW Benchmark at the intersection of Meridian and Keywest, NW Corner,  
 59' West of Centerline  
 32.3' North of Centerline  
 11.8' North of N curb line of Keywest  
 4.8' NW of center of Power Pole  
 Elev. = 1329.36 NGVD29

Scale: 1" = 20'



Remove Trees only as necessary for channel construction. All trees not in direct conflict with proposed channel shall remain and shall be protected from damage. Any trees that need trimmed shall be side trimmed with a chainsaw.

CBB Northlakes LLC  
 4647 N Meridian  
 Wichita, KS 67204-2401

Contractor shall reconstruct ditches after construction of RCBC and shall re-establish preconstruction ditch grades (Both Sides). Reconstructed ditches shall be lined with Curlex II Erosion Control Matting (Approx. 270 S.Y.).

R & R Realty LLC  
 Bldg 1000  
 8100 E 22nd St N  
 Wichita, KS 67226-2310

Vineyard Christian Fellowship  
 2020 Blake  
 Wichita, KS 67211-5353

**Caution**  
 Existing 24" SS Crossing.  
 Elev. ≈ 1308.85

Contractor shall Construct and Maintain one Construction Entrance onto Existing Paved Roadway (53rd St. N). Temporary 15" Pipe shall be installed in ditch. Cost of Pipe shall be incidental to Bid Item "Construction Entrance Installed"

EROSION CONTROL MEASURE	UNITS	QUANTITY
INSTALL STRAW BALE BARRIER	EA	2
INSTALL EROSION CONTROL MATTING	SY	270
QUANTITIES ARE FOR INFORMATION ONLY! CONTRACTOR SHALL VERIFY QUANTITIES PER FINAL BID QUANTITY SHEET.		

- Proposed Contours
- Existing Contours
- Existing San. Sewer
- Rip Rap to be installed
- Straw Bale Barriers to be installed (This Project)
- Dewatering Well (Abandoned)

**Baughman** Notgate Offsite Drainage  
**Channel Plan**  
 Storm Water Drain #307

Baughman Company, P.A. 315 8th St. Wichita, KS 67211 P 316-262-0149 F 316-262-0149  
 ENGINEERING | SURVEYING | PLANNING | LANDSCAPE ARCHITECTURE

PROJECT NUMBER 468-64253	DESIGN RDM/ABO	DRAWN RDM
REVISIONS:	APPROVED ABO	DATE 3-14-07
	SCALE Noted	
	SHEET	<b>7 OF 22</b>

Northgate\OFFSITE CHANNEL.dwg