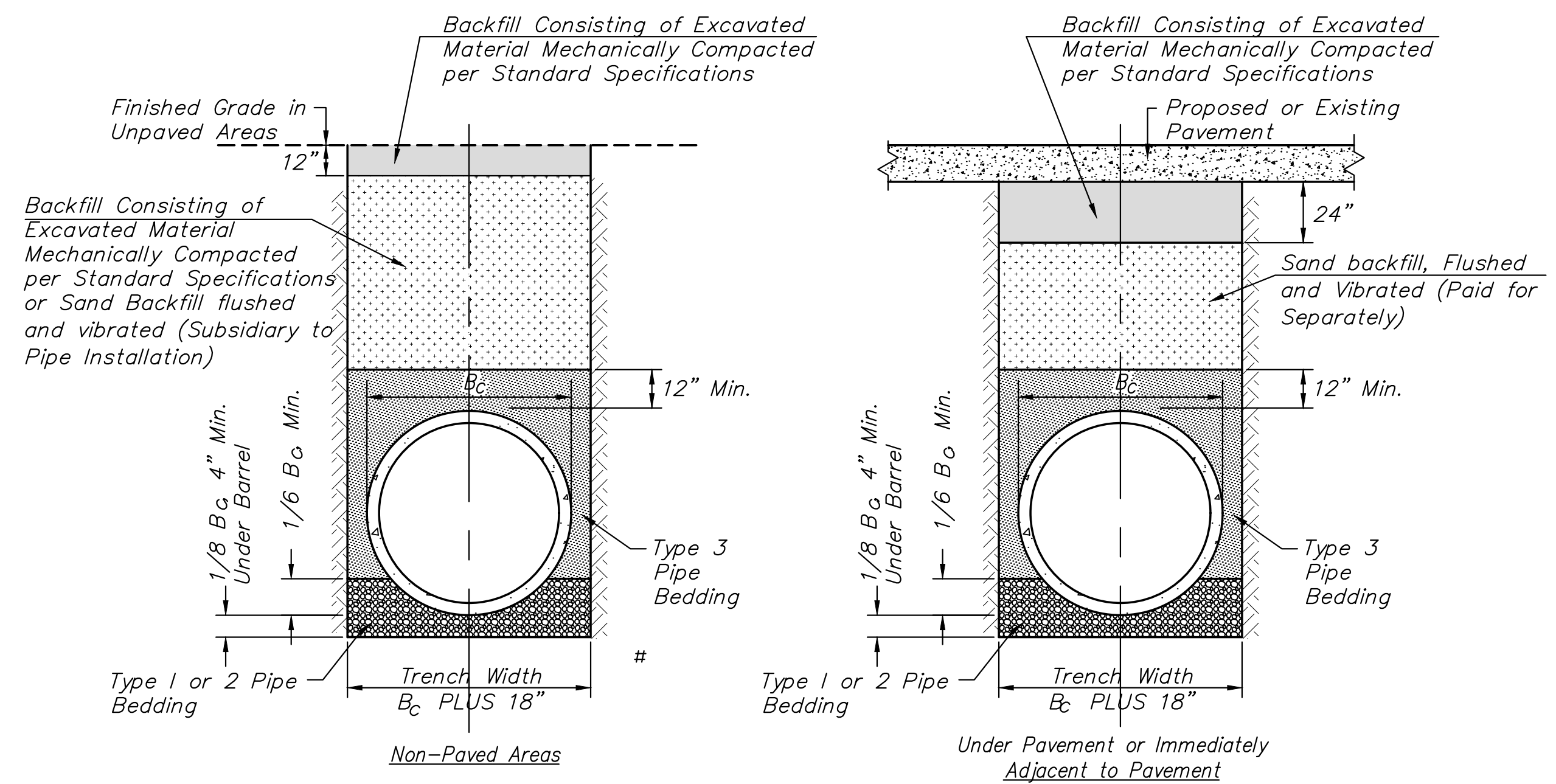
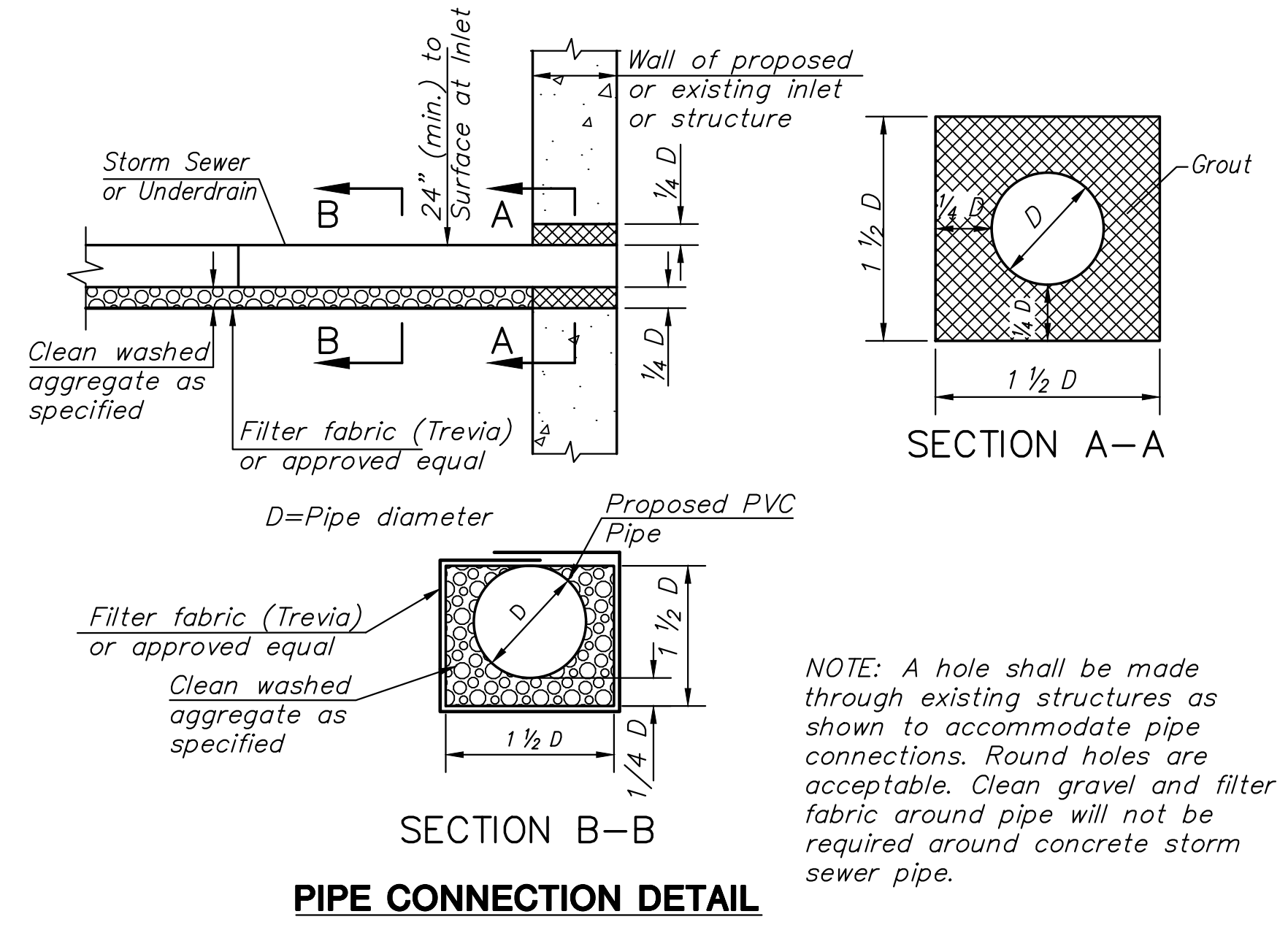


J:\PROJECTS\2017\150177_COW_17TH STREET REHAB_150177_CAD\SHOTS\06 CIVIL\SWS\15177D05.DWG
 PLOTTED: Tuesday, May 02, 2017 @ 06:25PM

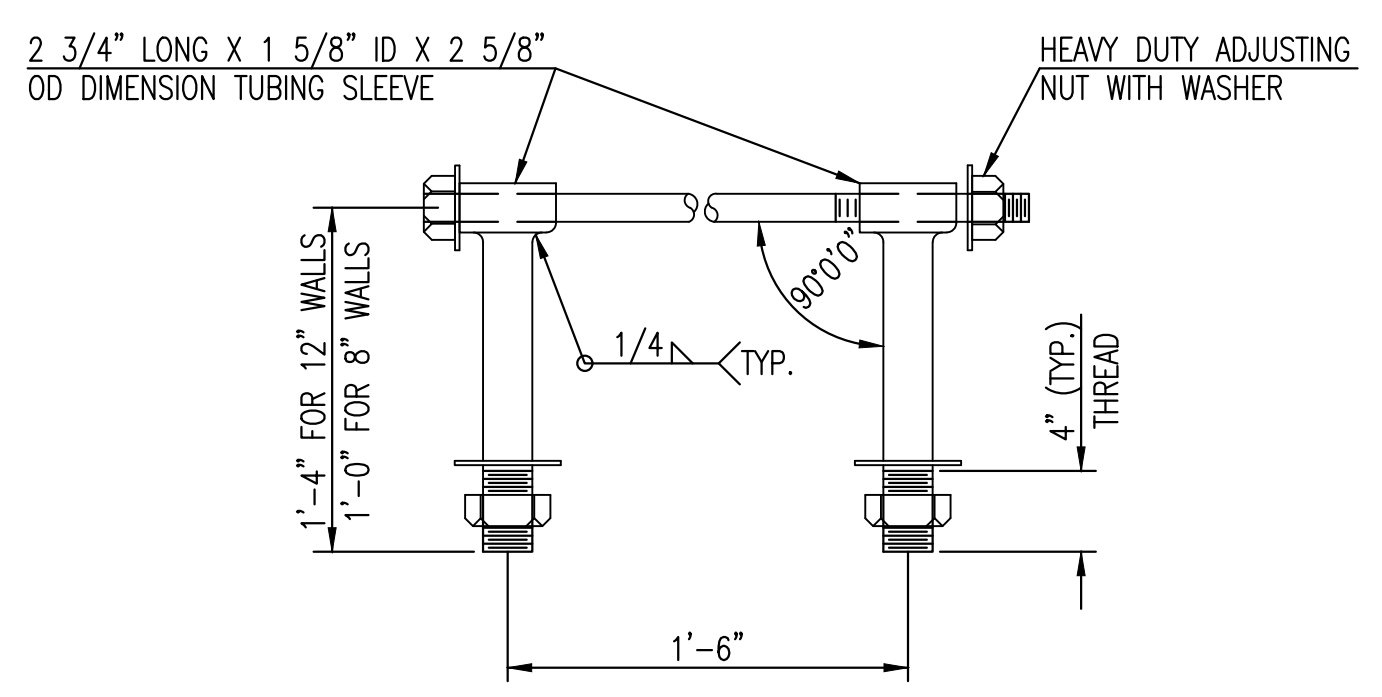


STORM SEWER TRENCH DETAILS



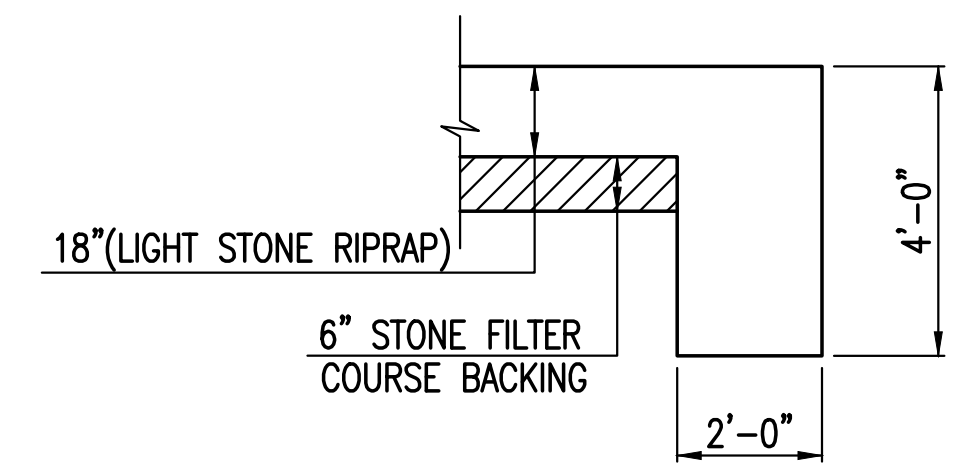
PIPE CONNECTION DETAIL

NOTE: A hole shall be made through existing structures as shown to accommodate pipe connections. Round holes are acceptable. Clean gravel and filter fabric around pipe will not be required around concrete storm sewer pipe.



HEAVY DUTY (H.D.) COUPLER

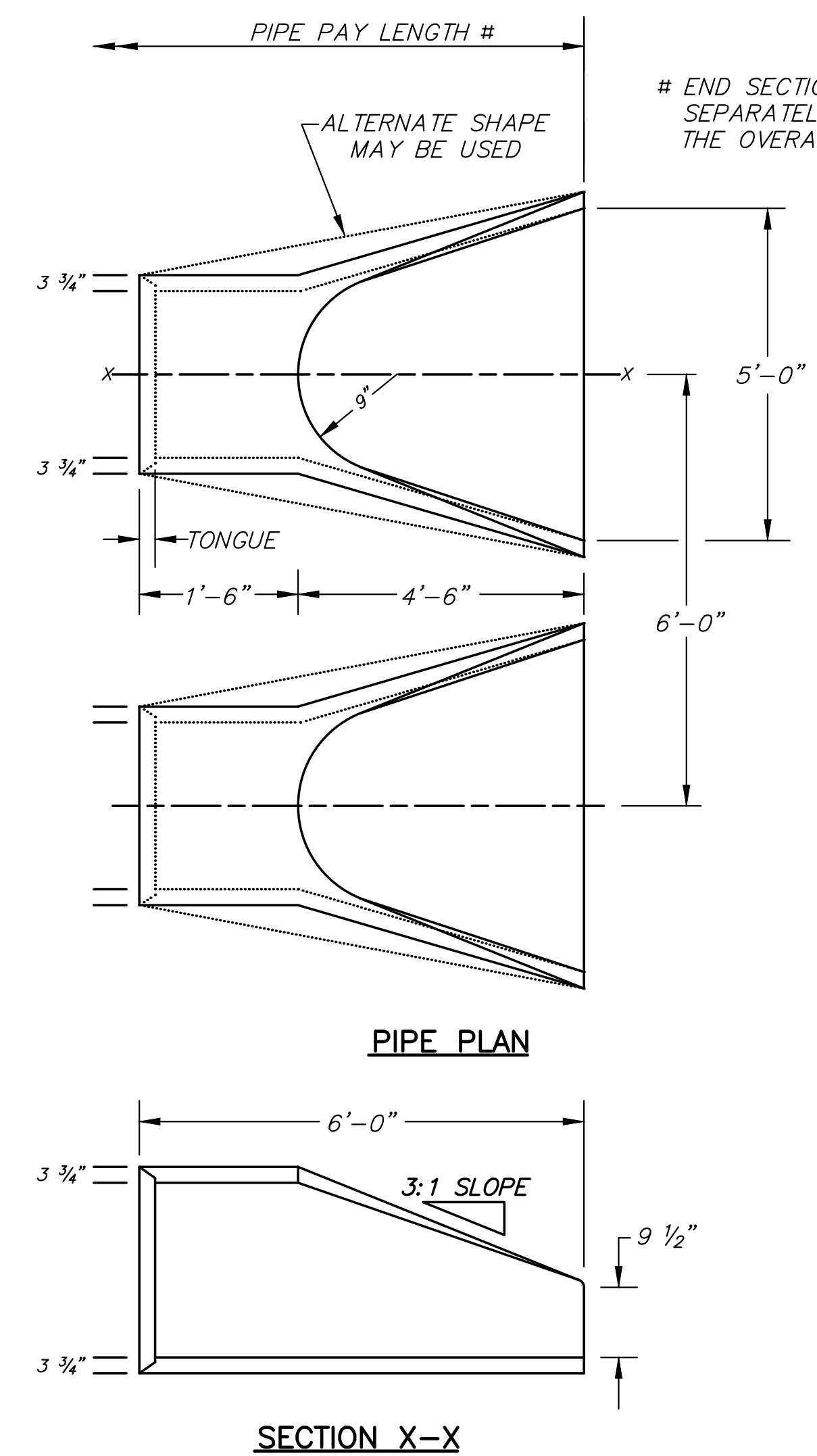
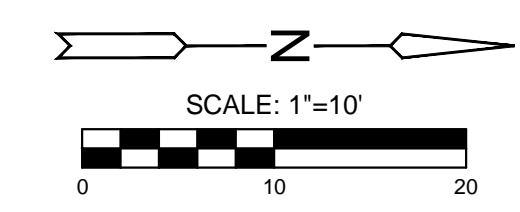
- NO SCALE
- NOTES
- BOLTS TO BE A-36 1 1/2" DIAMETER.
 - BOLTS, NUTS, WASHERS AND SLEEVES TO BE ZINC PLATED.
 - WASHERS TO BE 3 1/2" O.D. X 7 GAUGE.
 - SHIP WITH NUTS AND WASHERS PLACED ON BOLTS.



TYPICAL SECTION THRU TOEWALL

- NO SCALE
- NOTES
- ALL RIPRAP FOR THIS PROJECT SHALL BE NATURAL STONE. NEITHER BROKEN CONCRETE, FABRIC ENVELOPE, NOR PREMIXED DRY PACKAGED CONCRETE BAG ALTERNATES WILL BE ALLOWED, UNLESS INDICATED OTHERWISE.
 - TOEWALLS SHALL BE INSTALLED ALONG ALL UNPROTECTED EDGES OF STONE RIPRAP.
 - GROUTING OF THE SURFACE OF THE RIPRAP SHALL NOT BE PERFORMED, UNLESS INDICATED OTHERWISE. GROUTING OF THE TOEWALLS SHALL BE PERFORMED PER CITY SPECIFICATIONS.

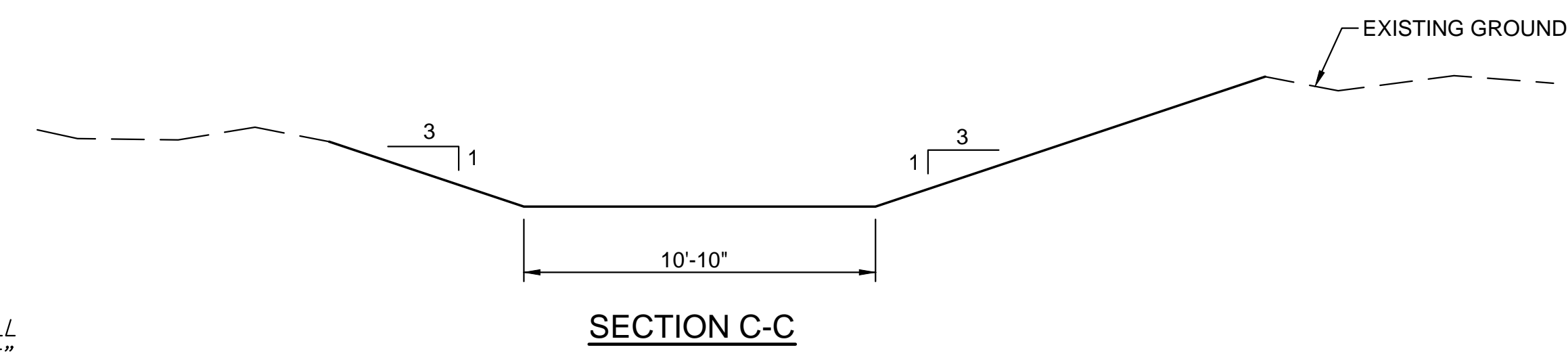
LIGHT STONE RIPRAP DETAILS



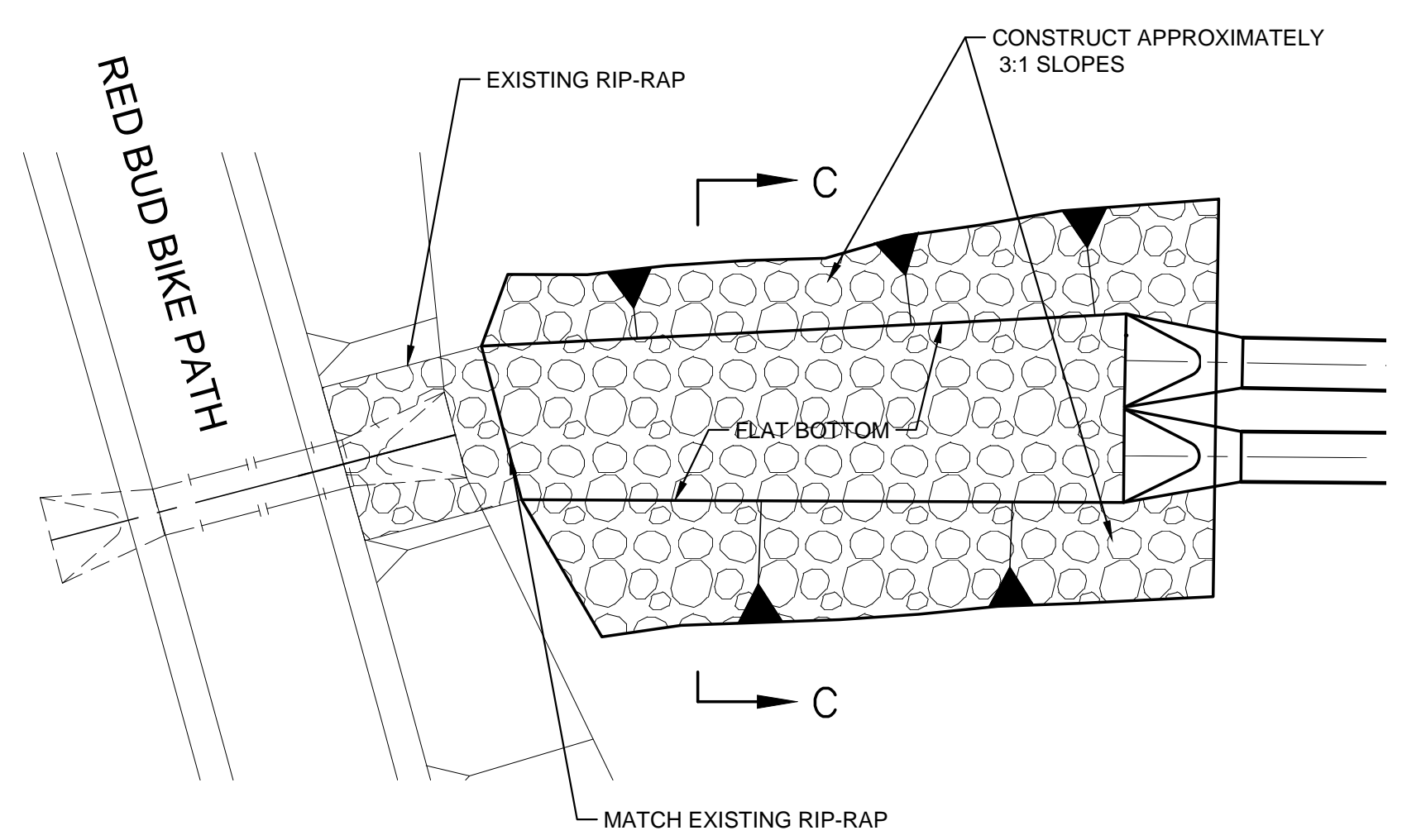
PIPE PLAN

SECTION X-X

- NOTES:**
- FILTER COURSE AND GROUTED TOE WALL SUBSIDIARY TO "RIP RAP, LIGHT STONE".
- TIES ARE SUBSIDIARY TO STORM SEWER PIPE.
- TIE RODS SHALL BE GALVANIZED OR POWER WASHED AND DIPPED IN AN APPROVED ZINC RICH EPOXY PRIME PAINT AFTER FABRICATION.
- RIP-RAP DIMENSIONS AT PIPE INLETS AND OUTLETS MAY BE ADJUSTED TO FIT ACTUAL FIELD CONDITIONS IF APPROVED BY THE ENGINEER.
- TIES TO BE USED ONLY TO HOLD PIPE SECTIONS TOGETHER, NOT FOR PULLING SECTIONS TIGHT.
- CONNECT END SECTION AND PIPE SECTIONS WITH PIPE TIES A MINIMUM DISTANCE OF 20' FROM THE END OF THE END SECTION.
- TIE ROD THREADS SHALL PROJECT TO THE INSIDE OF PIPE EXCEPT AS NOTED IN PLANS.
 -



SECTION C-C



STORM SEWER OUTFALL CHANNEL DETAIL



STREET REHABILITATION FOR
17TH STREET BETWEEN HILLSIDE & OLIVER
 WICHITA, KS

©2017
 MKEC Engineering
 All Rights Reserved
 www.mkec.com
 These drawings and their contents, including, but not limited to, all concepts, designs, & ideas are the exclusive property of MKEC Engineering (MKEC), and may not be used or reproduced in any way without the express consent of MKEC.

MISC. SWS DETAILS

PROJECT NO.	472-85215	
DATE	5/3/2017	
SCALE	AS SHOWN	
DESIGNED	DRAWN	CHECKED
JRA	WNJ	JRA

NO.	REVISION	DATE

SHEET NO.