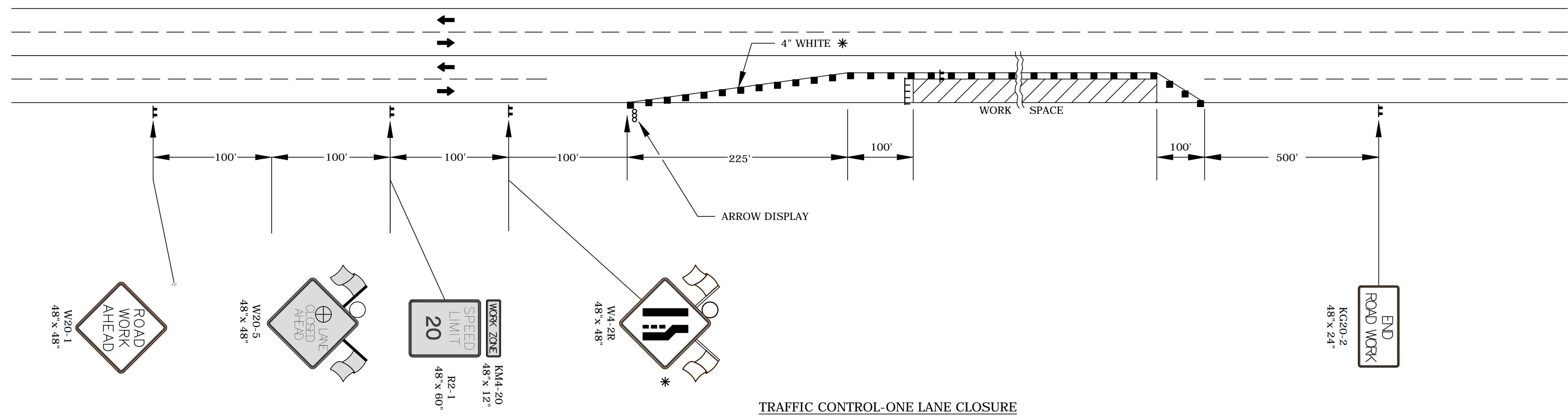


STATE	PROJECT NO.	YEAR	SHEET NO.	TOTAL SHEETS
KANSAS	448-90762	2016	48	54



STREET REHABILITATION FOR
17TH STREET BETWEEN HILLSIDE & OLIVER
 WICHITA, KS



TRAFFIC CONTROL-ONE LANE CLOSURE

- || TYPE III BARRICADES
- X LENGTH TO THE NEAREST WHOLE MILE
- CHANNELIZING DEVICE
- ▭ AHEAD, 1500 FT, OR 1 MILE
- ▭ AHEAD, 1000 FT, 1500 FT, OR 1/2 MILE
- ⊕ RIGHT OR LEFT
- ⊗ SPEED TO BE DETERMINED BY THE ENGINEER
- TYPE "A" LOW INTENSITY WARNING LIGHT

* FOR LEFT LANE CLOSURES USE W4-2L AND YELLOW EDGE LINE ALONG CHANNELIZING DEVICES.

TRAFFIC CONTROL NOTES:

THIS STANDARD TRAFFIC CONTROL SET-UP SHALL BE UTILIZED DURING WATER LINE AND STORM SEWER CONSTRUCTION UNDER AND ADJACENT TO 17TH STREET.

THE LENGTH OF THE WORK ZONE SHALL NOT BE EXCESSIVELY LONG. A WORK ZONE COVERING THE ENTIRE LENGTH OF UTILITY LINE BEING CONSTRUCTED IS NOT PERMITTED UNLESS APPROVED BY THE ENGINEER. ADJUST THE LENGTH TO MINIMIZE DRIVEWAY AND SIDE STREET CLOSURES.

THE CONTRACTOR SHALL UTILIZE SIDEWALK CLOSURE SIGNS TO PREVENT PEDESTRIANS FROM USING THE CROSS-WALK SIGNAL WHEN STREET OR UTILITY CONSTRUCTION EXTENDS THROUGH THE CROSSWALK.

THE CONTRACTOR SHALL SUBMIT A PLAN TO THE ENGINEER FOR APPROVAL IF AN ALTERNATE TRAFFIC CONTROL PLAN IS DESIRED BY THE CONTRACTOR.

ONE FLAGGER SHOULD BE STATIONED WITHIN EACH MULTI-LANE ROADWAY ACTIVITY AREA WHERE WORK IS IN A CLOSED LANE ADJACENT TO TRAFFIC AND NOT SEPERATED BY A CONCRETE SAFETY BARRIER SYSTEM.

©2013 MKEC Engineering All Rights Reserved
 www.mkec.com
 These drawings and their contents, including, but not limited to, all concepts, designs, & ideas are the exclusive property of MKEC Engineering (MKEC), and may not be used or reproduced in any way without the express consent of MKEC.

TRAFFIC CONTROL - TYPICAL PAVEMENT REHAB PLAN

PROJECT NO.	472-85215	
DATE	5/3/2017	
SCALE	1"=60'	
DESIGNED	DRAWN	CHECKED
JRA	WNJ	JRA
NO.	REVISION	DATE

J:\PROJECTS\2015\1601040177_COW_17TH STREET REHAB_160177 CAD\SHOTS\05 CIVIL\TRAFFIC\15177 TE744.DWG
 PLOTTED: Fri, May 05, 2017 @ 02:18 PM