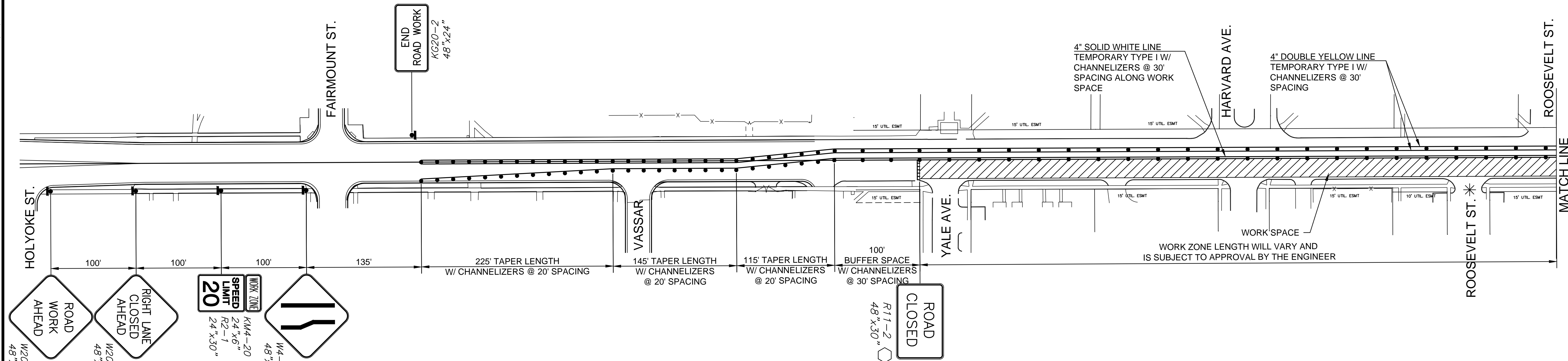


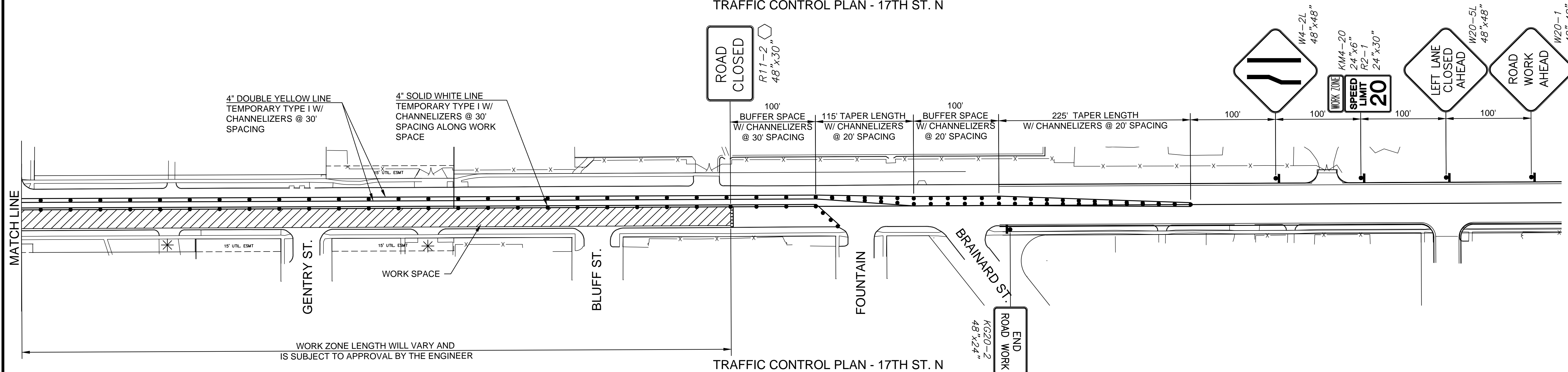
PLOTTED: Wednesday, May 03, 2017 @ 09:00AM

J:\PROJECTS\2017\1501177_CAD\SHS\06_CIVIL\TRAFFIC\15177-TP01.DWG

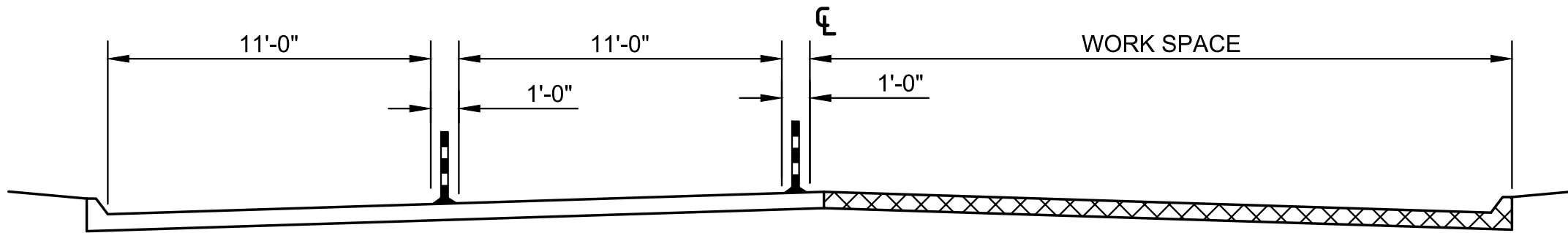
STREET REHABILITATION FOR
17TH STREET BETWEEN HILLSIDE & OLIVER
WICHITA, KS



TRAFFIC CONTROL PLAN - 17TH ST. N



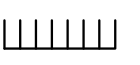

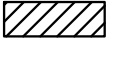


TRAFFIC CONTROL PLAN - 17TH ST. N





TRAFFIC CONTROL - 17TH ST. N

TRAFFIC CONTROL NOTES:
 THIS PLAN IS A TYPICAL TRAFFIC CONTROL PLAN TO BE UTILIZED DURING PAVEMENT PATCHING OPERATIONS. THE PLAN ALLOWS PATCHING TO OCCUR IN TWO ADJACENT LANES. THE LENGTH OF THE WORK ZONE SHALL BE SUBJECT TO APPROVAL BY THE ENGINEER.
 THE CONTRACTOR SHALL SUBMIT A PLAN TO THE ENGINEER FOR APPROVAL IF AN ALTERNATE TRAFFIC CONTROL PLAN IS DESIRED BY THE CONTRACTOR.
 THE CONTRACTOR SHALL PROVIDE ACCESS TO SIDE STREETS AND ENTRANCES THAT FALL WITHIN THE WORK ZONE WHEN POSSIBLE. COORDINATE OPENING LOCATIONS AND ADJUSTMENTS TO THE TRAFFIC CONTROL WITH THE ENGINEER.
 MINIMIZE THE DURATION OF DRIVEWAY CLOSURES. COORDINATE CLOSURES WITH THE PROPERTY OWNERS PRIOR TO CLOSING. ROOSEVELT STREET NORTH AND SOUTH OF 17TH STREET SHALL NOT BE CLOSED AT ANY TIME DURING CONSTRUCTION.
 NO TWO CONSECUTIVE SIDE STREETS CAN BE CLOSED AT THE SAME TIME (EXCEPTION IS FOUNTAIN & BRAINARD ST.)

LEGEND

-  Type III Barricade
-  Channelizer
-  Work Space
-  Traffic Flow
-  Single Access Point

SCALE: 1"=60'

©2017 MKEC Engineering
 All Rights Reserved
 www.mkec.com
 These drawings and their contents, including, but not limited to, all concepts, designs, & ideas are the exclusive property of MKEC Engineering (MKEC), and may not be used or reproduced in any way without the express consent of MKEC.

GENERAL TRAFFIC CONTROL	
PROJECT NO.	472-85215
DATE	5/3/2017
SCALE	AS SHOWN
DESIGNED	DRAWN
JRA	WNJ
CHECKED	JRA
NO.	REVISION
	DATE
SHEET NO.	
49 OF 54	