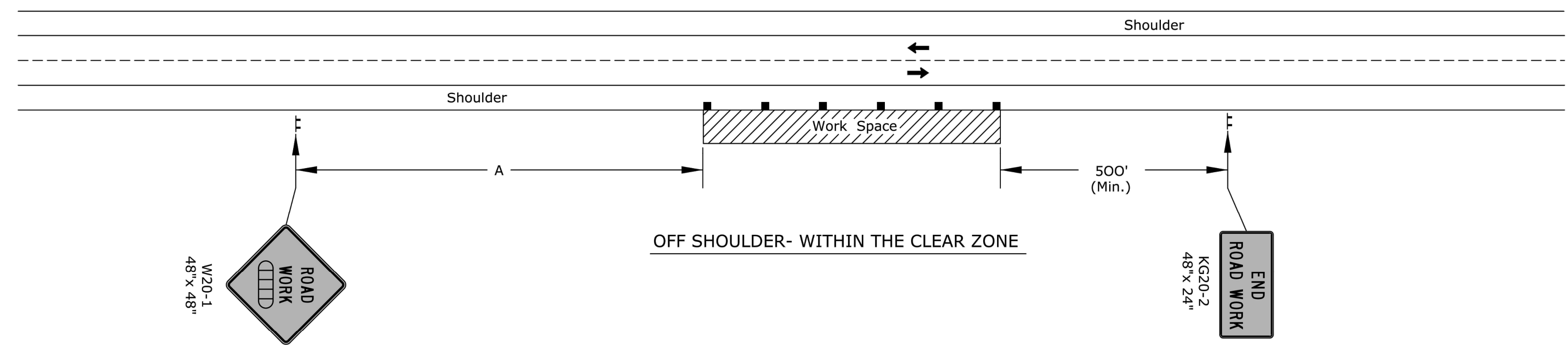


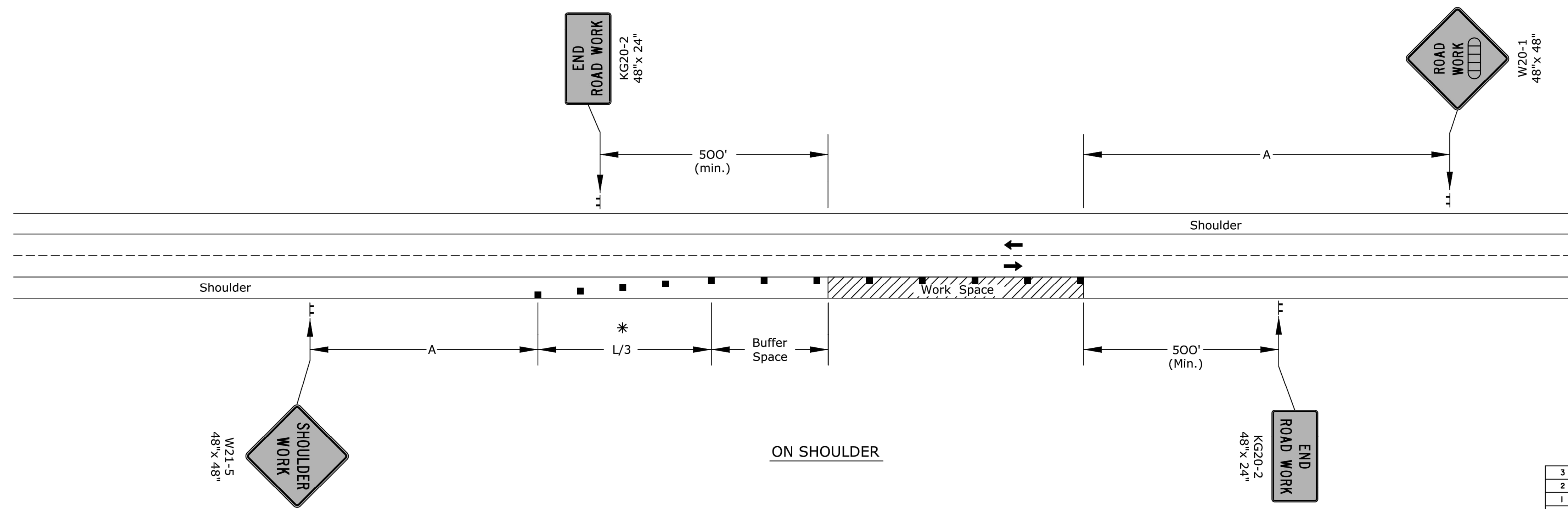
STATE	PROJECT NO.	YEAR	SHEET NO.	TOTAL SHEETS
KANSAS	472-85215	2016	54	54



Notes:

No traffic control is required if the work space is located outside of the clear zone.

For operations of 60 minutes or less, all signs and channelizing devices may be eliminated if a vehicle with high-intensity rotating, flashing, oscillating, or strobe lights is used.



* Omit taper if paved shoulder is less than 8' wide.

- Channelizing device
- ◻◻◻◻ Ahead, 1500 ft, or 1 mile

3				
2				
1				
NO.	DATE	REVISIONS	BY	APP'D

KANSAS DEPARTMENT OF TRANSPORTATION

**TRAFFIC CONTROL
SHOULDER WORK
UNDIVIDED ROADWAY**

TE720

DESIGNED	L.E.R.	QUANTITIES	R.W.B.	APP'D	Kristina Erlakson
DESIGN CK.	DETAIL CK.	QUAN. CK.	TRACE CK.		

J:\PROJECTS\2016\160104077_C0W_17TH STREET REHAB\150117 CAD\SHS\04 CIVIL\TRAFFIC\151771\ED05.DWG
 PLOTTED: Wednesday, May 03, 2017 11:01AM