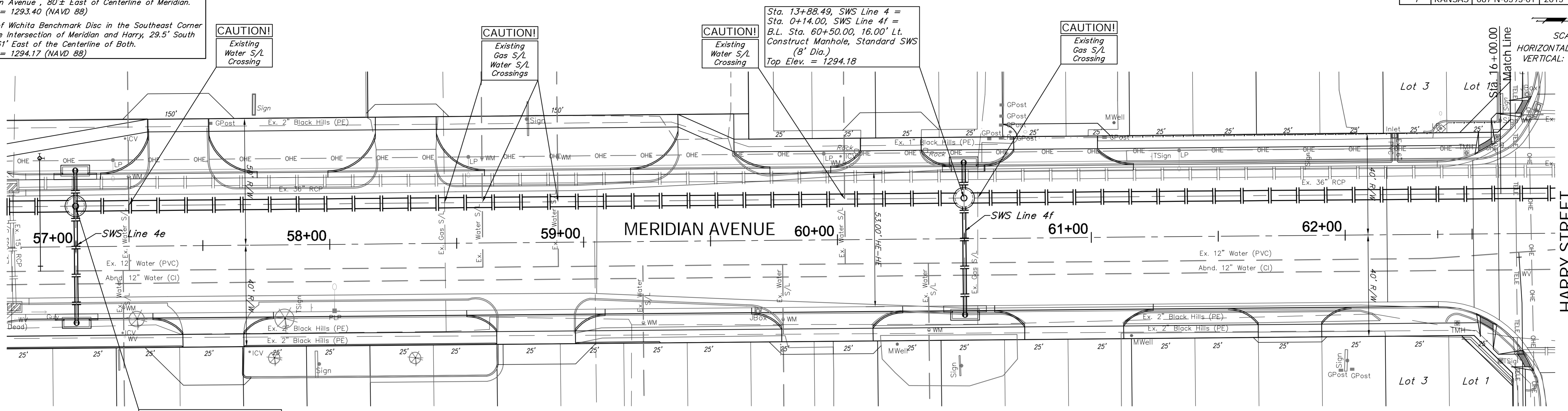


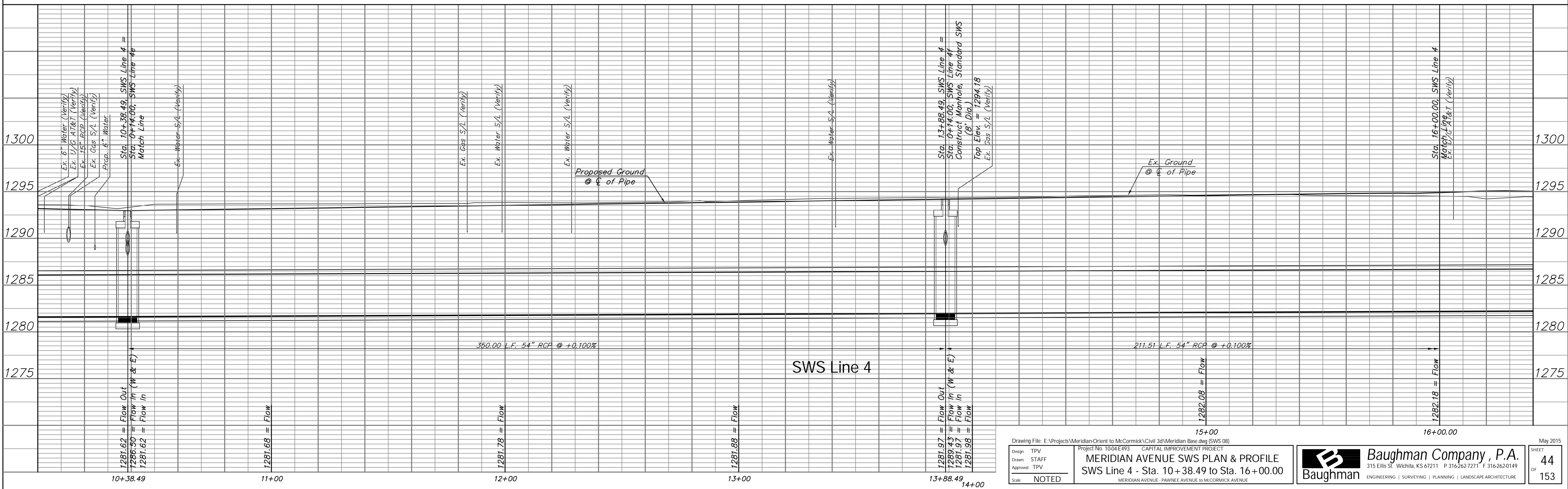
BENCHMARKS:
 BM #2 - Chiseled "b" on the Top of Curb on the South Side of Merton Avenue, 80± East of Centerline of Meridian. Elev. = 1293.40 (NAVD 88)
 BM #3 - City of Wichita Benchmark Disc in the Southeast Corner of the Intersection of Meridian and Harry, 29.5' South and 61' East of the Centerline of Both. Elev. = 1294.17 (NAVD 88)

REGION NO.	STATE	PROJECT NO.	FISCAL YEAR	SHEET NO.	TOTAL SHEETS
7	KANSAS	087 N-0593-01	2015	44	153



Sta. 10+38.49, SWS Line 4 =
 Sta. 0+14.00, SWS Line 4e =
 B.L. Sta. 57+00.00, 16.00' Lt.
 Match Point

Built per plan
 SWS Line 4



Design: TPV
 Drawn: STAFF
 Approved: TPV
 Scale: NOTED

Project No. 1004-E493 CAPITAL IMPROVEMENT PROJECT
MERIDIAN AVENUE SWS PLAN & PROFILE
 SWS Line 4 - Sta. 10+38.49 to Sta. 16+00.00
 MERIDIAN AVENUE - PAWNEE AVENUE TO MCCORMICK AVENUE

Baughman Company, P.A.
 315 Ellis St., Wichita, KS 67211 P 316.262.7271 F 316.262.0149
 ENGINEERING | SURVEYING | PLANNING | LANDSCAPE ARCHITECTURE

May 2015
 SHEET 44 OF 153