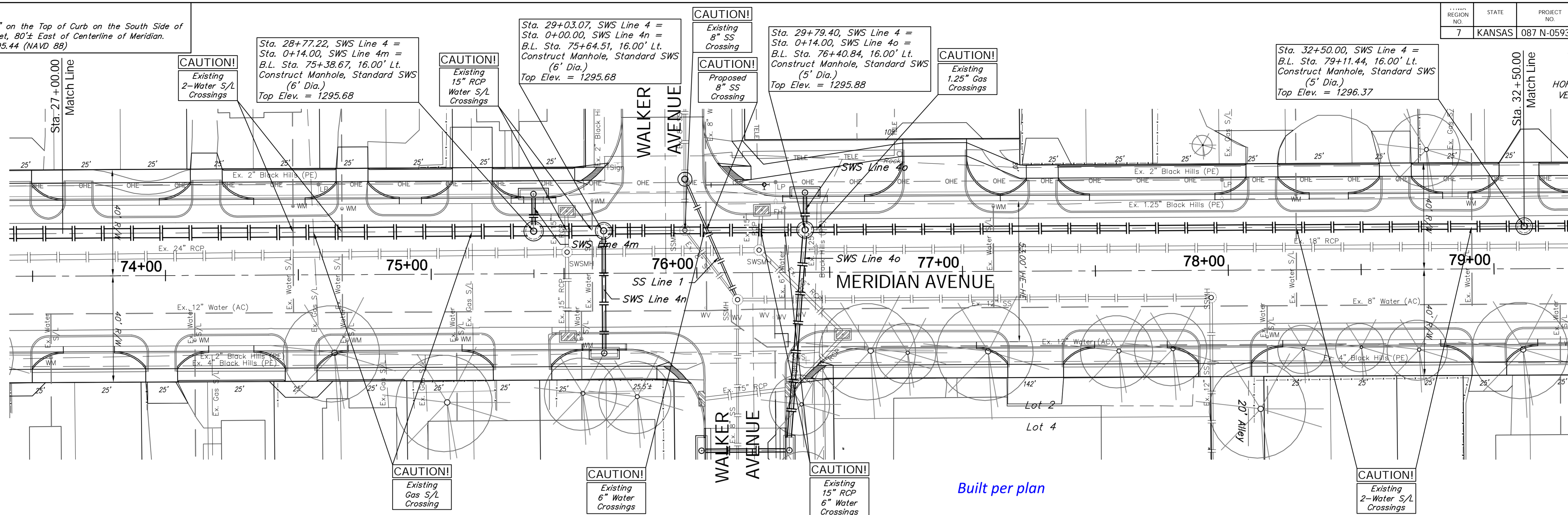


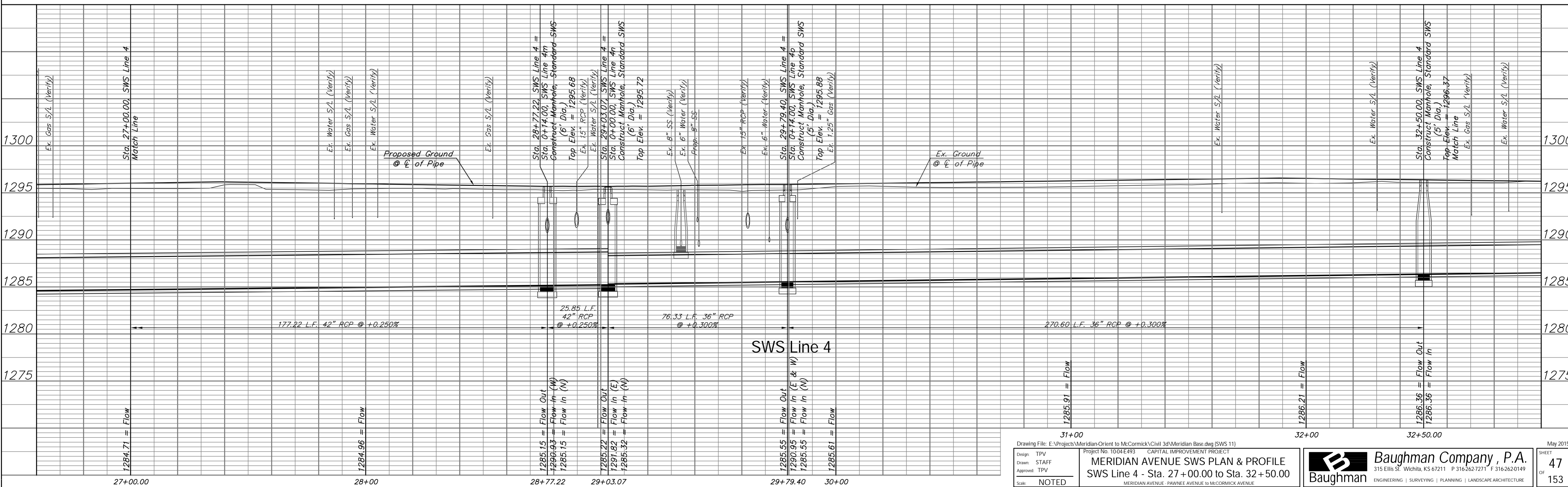
BENCHMARK:
 BM #6 - Chiseled "a" on the Top of Curb on the South Side of Walker Street, 80'± East of Centerline of Meridian.
 Elev. = 1295.44 (NAVD 88)

REGION NO.	STATE	PROJECT NO.	FISCAL YEAR	SHEET NO.	TOTAL SHEETS
7	KANSAS	087 N-0593-01	2015	47	153

SCALE:
 HORIZONTAL: 1" = 20'
 VERTICAL: 1" = 5'



SWS Line 4



Drawing File: E:\Projects\Meridian Orient to McCormick\Civil 3d\Meridian Base.dwg (SWS 11)
 Project No: 1004-E493 CAPITAL IMPROVEMENT PROJECT
MERIDIAN AVENUE SWS PLAN & PROFILE
 SWS Line 4 - Sta. 27+00.00 to Sta. 32+50.00
 MERIDIAN AVENUE - PAVINE AVENUE to MCCORMICK AVENUE

Design: TPV
 Drawn: STAFF
 Approved: TPV
 Scale: NOTED

Baughman Company, P.A.
 315 Ellis St., Wichita, KS 67211 P 316.262.7271 F 316.262.0149
 ENGINEERING | SURVEYING | PLANNING | LANDSCAPE ARCHITECTURE

May 2015
 SHEET 47 OF 153