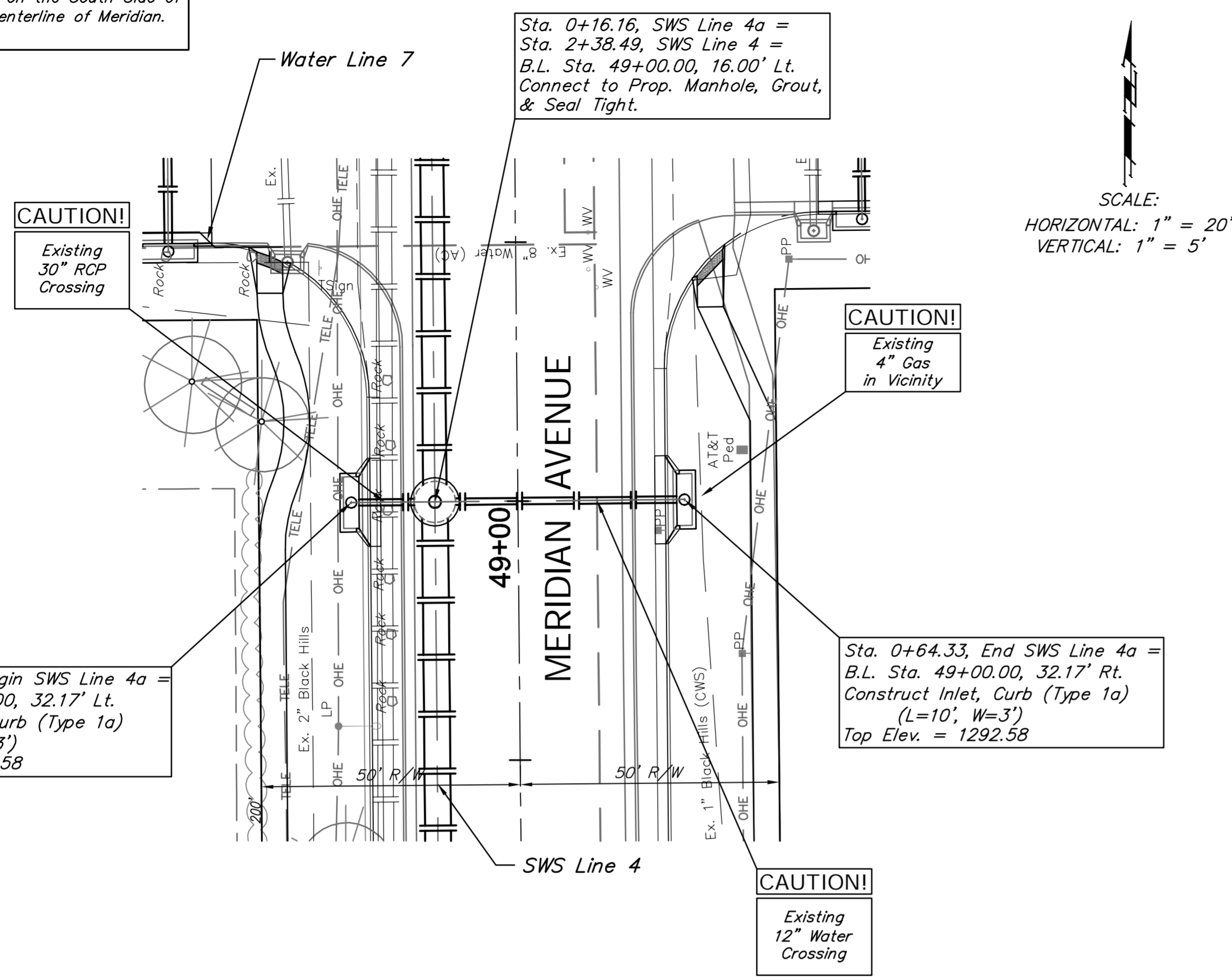
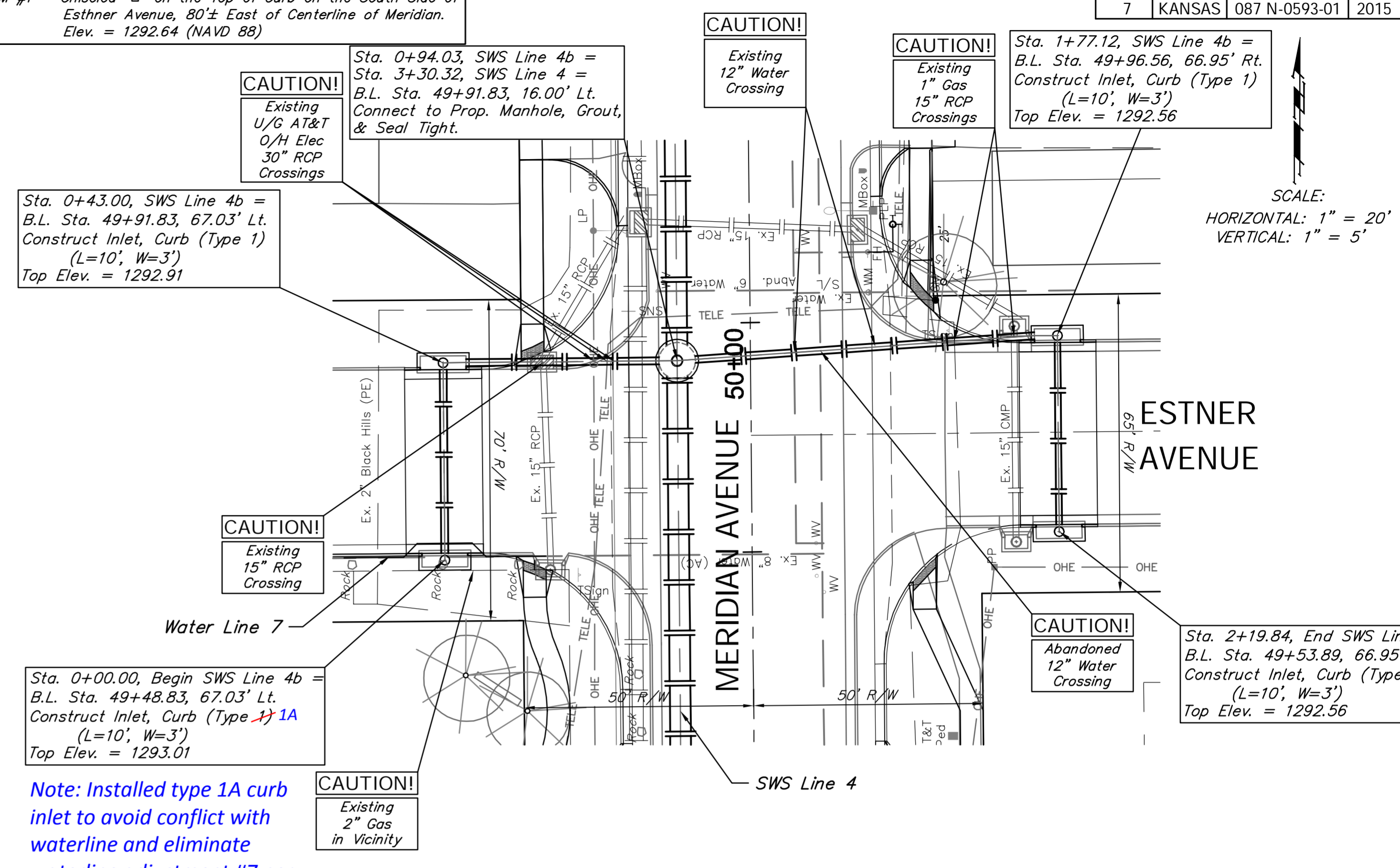


BENCHMARK:  
 BM #1 - Chiseled "b" on the Top of Curb on the South Side of  
 Esthner Avenue, 80'± East of Centerline of Meridian.  
 Elev. = 1292.64 (NAVD 88)



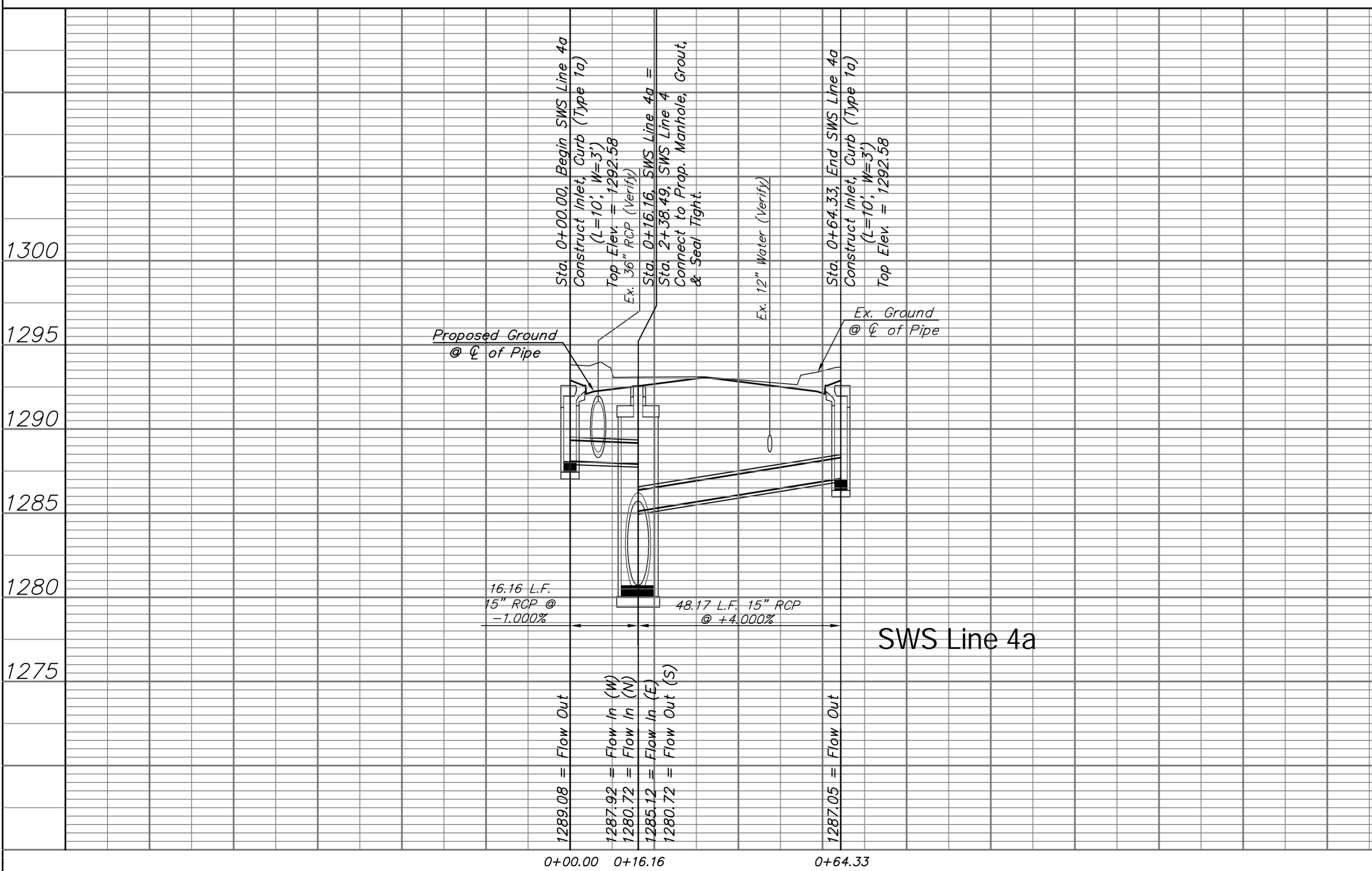
SWS Line 4a

BENCHMARK:  
 BM #1 - Chiseled "b" on the Top of Curb on the South Side of  
 Esthner Avenue, 80'± East of Centerline of Meridian.  
 Elev. = 1292.64 (NAVD 88)

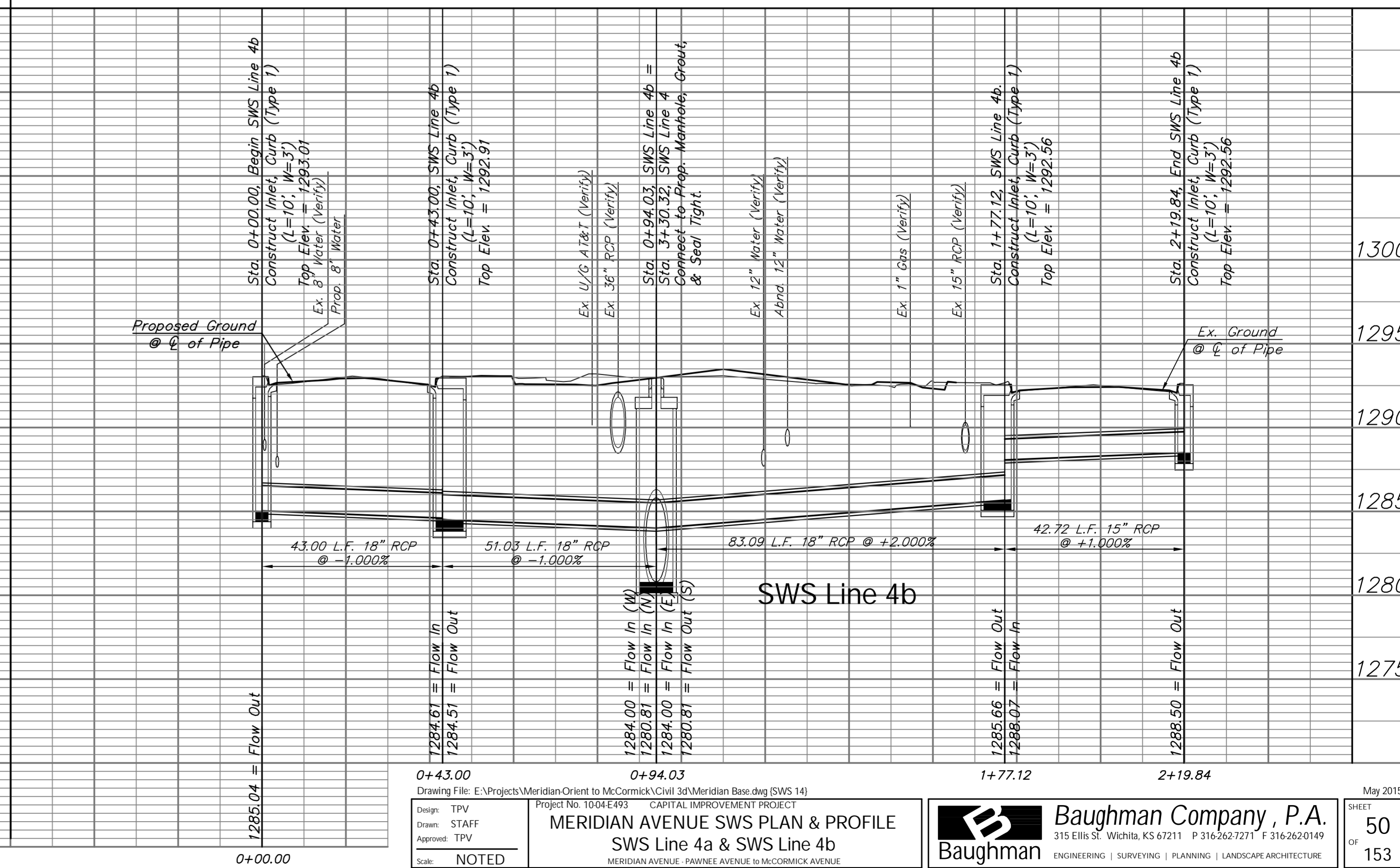


SWS Line 4b

Note: Installed type 1A curb inlet to avoid conflict with waterline and eliminate waterline adjustment #7 per Greg Baalman.



SWS Line 4a



SWS Line 4b

0+43.00      0+94.03      1+77.12      2+19.84

Drawing File: E:\Projects\Meridian Orient to McCormick\Civil 3d\Meridian Base.dwg (SWS 14)

Project No: 1004-E493 CAPITAL IMPROVEMENT PROJECT

Design: TPV  
 Drawn: STAFF  
 Approved: TPV  
 Scale: NOTED

**MERIDIAN AVENUE SWS PLAN & PROFILE**  
 SWS Line 4a & SWS Line 4b

**Baughman Company, P.A.**  
 315 Ellis St., Wichita, KS 67211 P 316.262.7271 F 316.262.0149  
 ENGINEERING | SURVEYING | PLANNING | LANDSCAPE ARCHITECTURE

SHEET 50 OF 153

May 2015