

**BENCHMARKS:**  
 BM #1 - Chiseled "b" on the Top of Curb on the South Side of Esthner Avenue, 80'± East of Centerline of Meridian. Elev. = 1292.64 (NAVD 88)  
 BM #2 - Chiseled "b" on the Top of Curb on the South Side of Merton Avenue, 80'± East of Centerline of Meridian. Elev. = 1293.40 (NAVD 88)

Sta. 0+00.00, Begin SWS Line 4c = B.L. Sta. 53+00.00, 30.00' Lt. Construct Inlet, Curb (Type 1) (L=10', W=3') Top Elev. = 1293.26

Sta. 0+14.00, SWS Line 4c = Sta. 6+38.49, SWS Line 4 = B.L. Sta. 53+00.00, 16.00' Lt. Connect to Prop. Manhole, Grout, & Seal Tight.

**CAUTION!**  
Existing U/G AT&T 1" Gas in Vicinity

Sta. 0+60.00, End SWS Line 4c = B.L. Sta. 53+00.00, 30.00' Rt. Construct Inlet, Curb (Type 1) (L=10', W=3') Top Elev. = 1293.26

**CAUTION!**  
Existing 30" RCP Crossing

**CAUTION!**  
Existing 12" Water Crossing

**CAUTION!**  
Abandoned 12" Water Crossing

SCALE:  
HORIZONTAL: 1" = 20'  
VERTICAL: 1" = 5'

Built per plan

SWS Line 4c

**BENCHMARKS:**  
 BM #2 - Chiseled "b" on the Top of Curb on the South Side of Merton Avenue, 80'± East of Centerline of Meridian. Elev. = 1293.40 (NAVD 88)

Sta. 0+36.00, SWS Line 4d = B.L. Sta. 56+53.59, 96.47' Lt. Construct Inlet, Drop (Double) See Detail, Sheet 63. Top Elev. = 1291.25

Sta. 1+16.47, SWS Line 4d = Sta. 9+92.08, SWS Line 4 = B.L. Sta. 56+53.59, 16.00' Lt. Connect to Prop. Manhole, Grout, & Seal Tight.

**CAUTION!**  
Existing U/G Elec 15" RCP 36" RCP Crossings

**CAUTION!**  
Existing 12" Water Crossing

**CAUTION!**  
Existing O/H Elec 2" Gas Crossings

**CAUTION!**  
Existing SWS Inlet in Conflict

Sta. 2+06.86, SWS Line 4d = B.L. Sta. 56+49.879, 74.31' Rt. Construct Inlet (Grated Driveway) (Double) FL Elev. = 1292.70

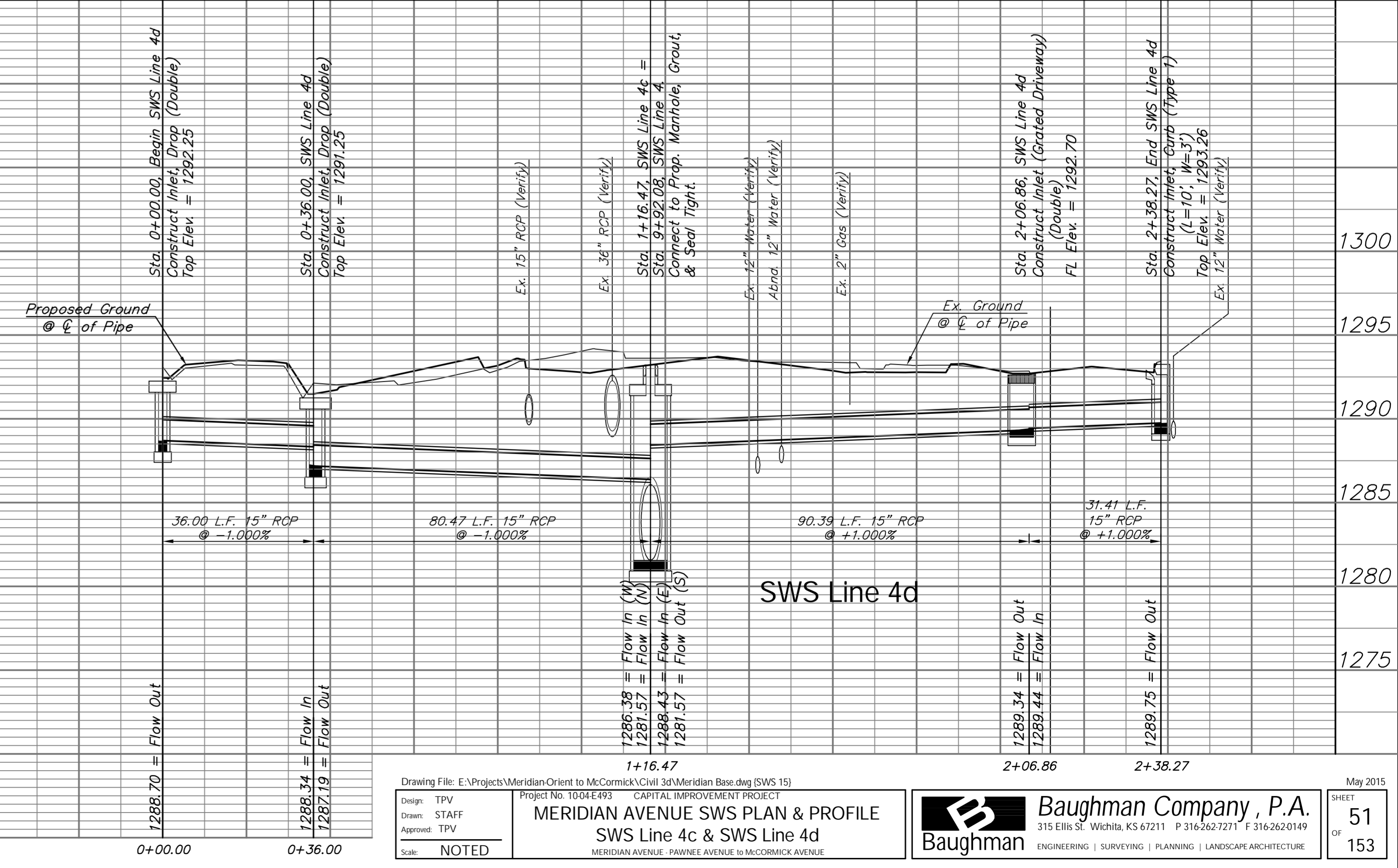
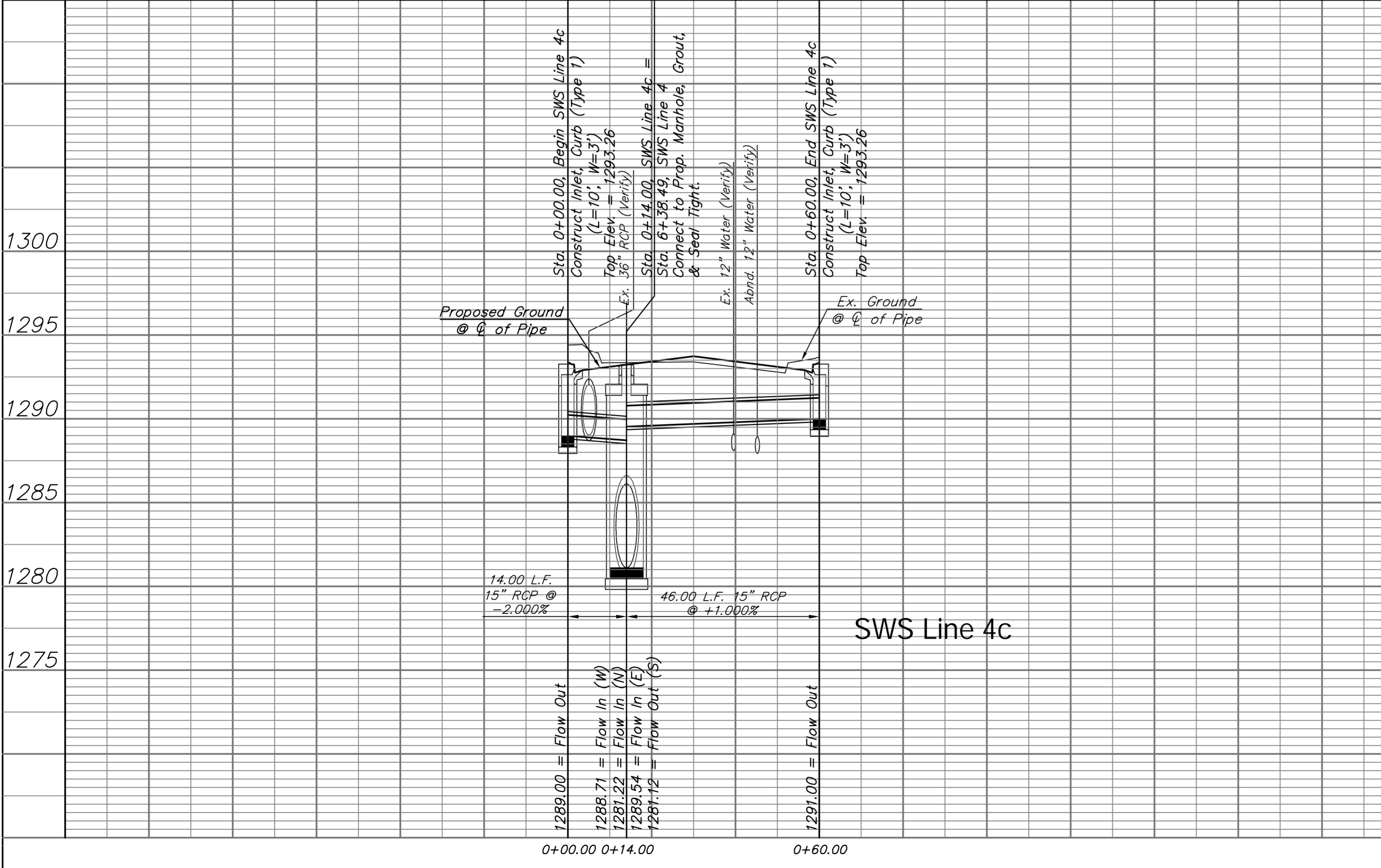
Sta. 2+38.27, End SWS Line 4d = B.L. Sta. 56+18.45, 74.31' Rt. Construct Inlet, Curb (Type 1) (L=10', W=3') Top Elev. = 1293.26

Sta. 0+00.00, Begin SWS Line 4d = B.L. Sta. 56+17.59, 96.56' Lt. Construct Inlet, Drop (Double) See Detail, Sheet 63. Top Elev. = 1292.25

SCALE:  
HORIZONTAL: 1" = 20'  
VERTICAL: 1" = 5'

Built per plan

SWS Line 4d



Drawing File: E:\Projects\Meridian Orient to McCormick\Civil 3d\Meridian Base.dwg (SWS 15)  
 Project No: 1004-E493 CAPITAL IMPROVEMENT PROJECT  
**MERIDIAN AVENUE SWS PLAN & PROFILE**  
 SWS Line 4c & SWS Line 4d  
 MERIDIAN AVENUE - PAVINE AVENUE TO MCCORMICK AVENUE  
 Design: TPV  
 Drawn: STAFF  
 Approved: TPV  
 Scale: NOTED

**Baughman Company, P.A.**  
 315 Ellis St., Wichita, KS 67211 P 316.262.1271 F 316.262.0149  
 ENGINEERING | SURVEYING | PLANNING | LANDSCAPE ARCHITECTURE

May 2015  
 SHEET 51 OF 153