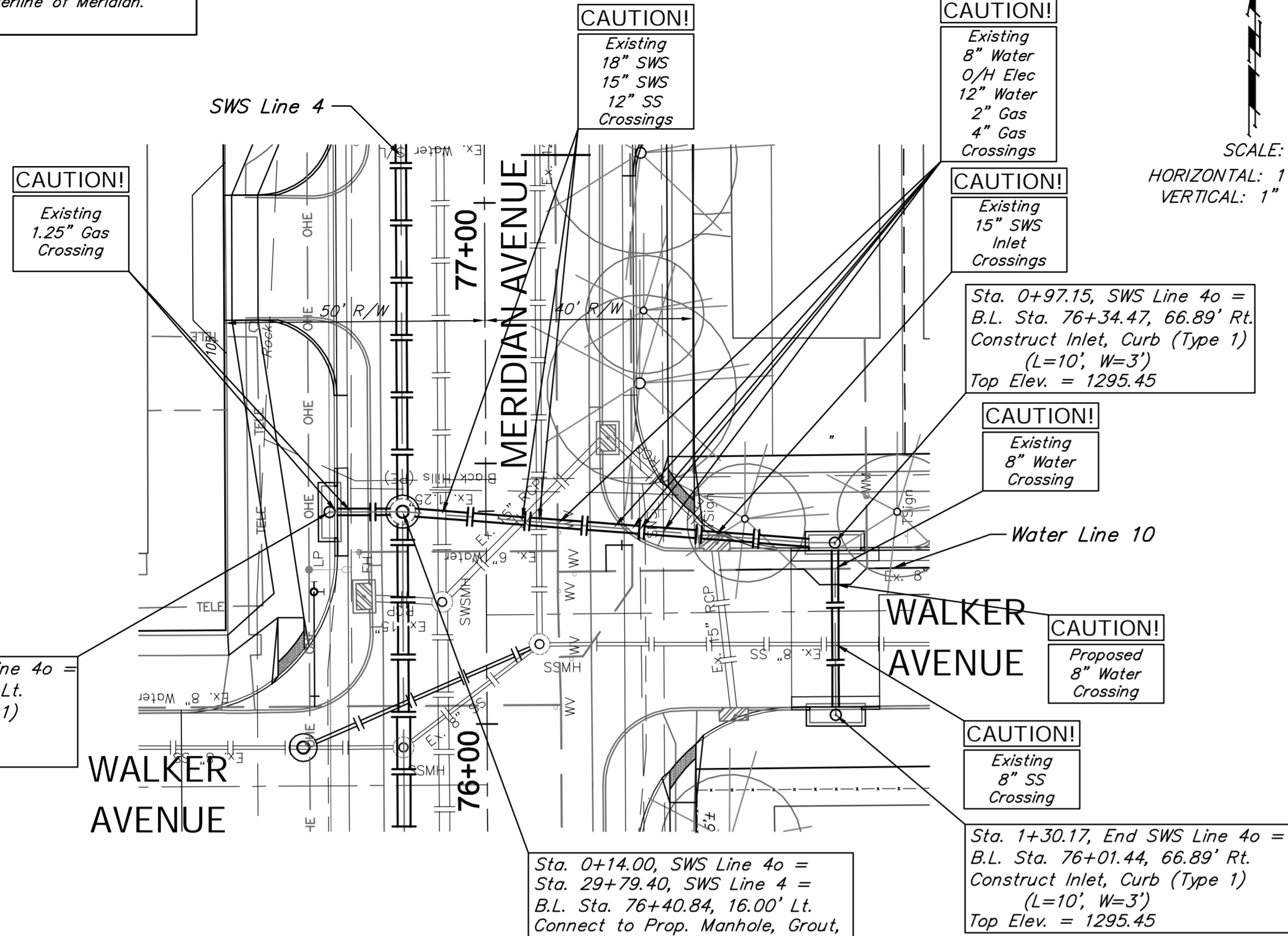
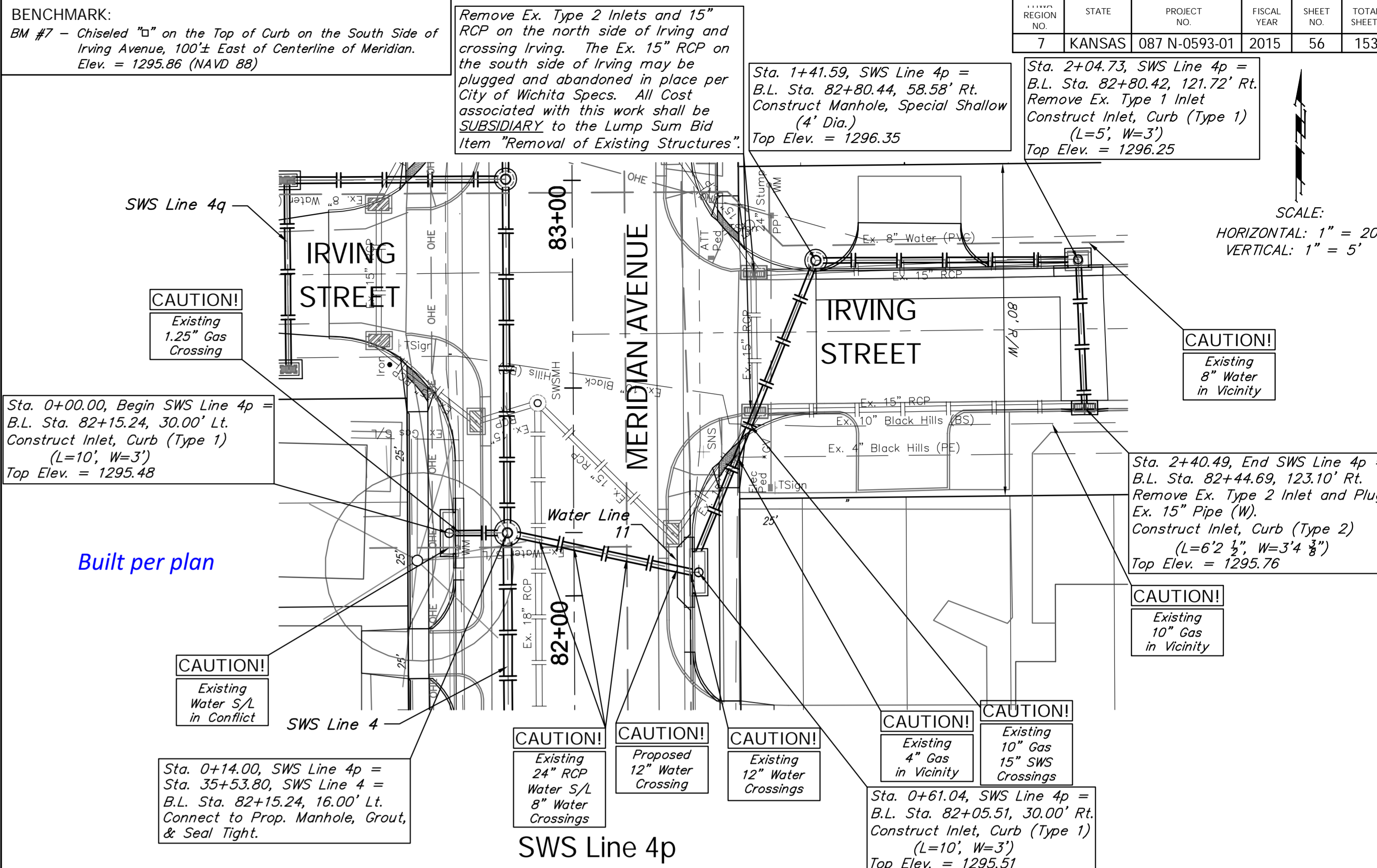


BENCHMARK:
 BM #6 - Chiseled "b" on the Top of Curb on the South Side of Walker Street, 80'± East of Centerline of Meridian.
 Elev. = 1295.44 (NAVD 88)

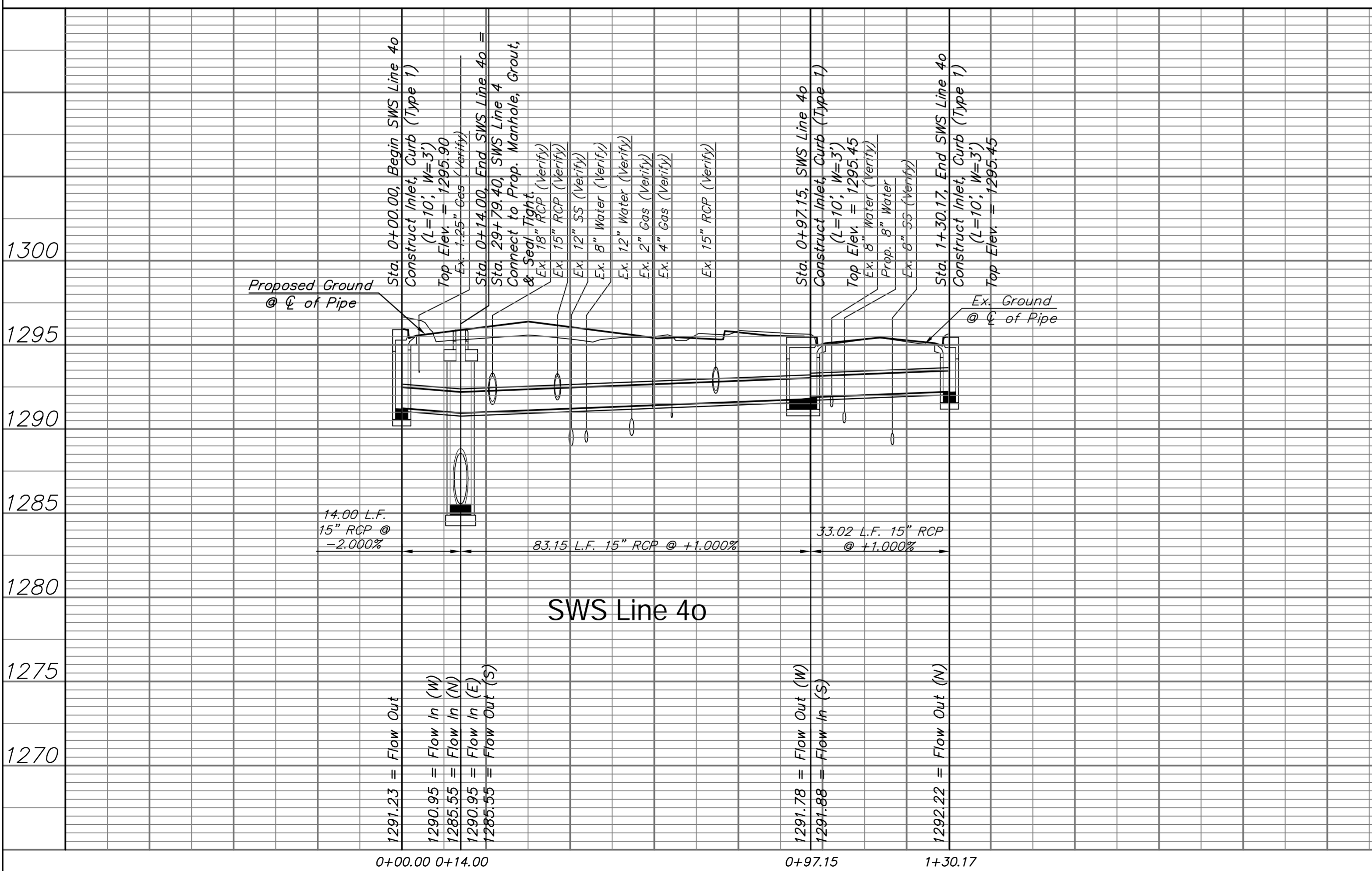


SWS Line 4o

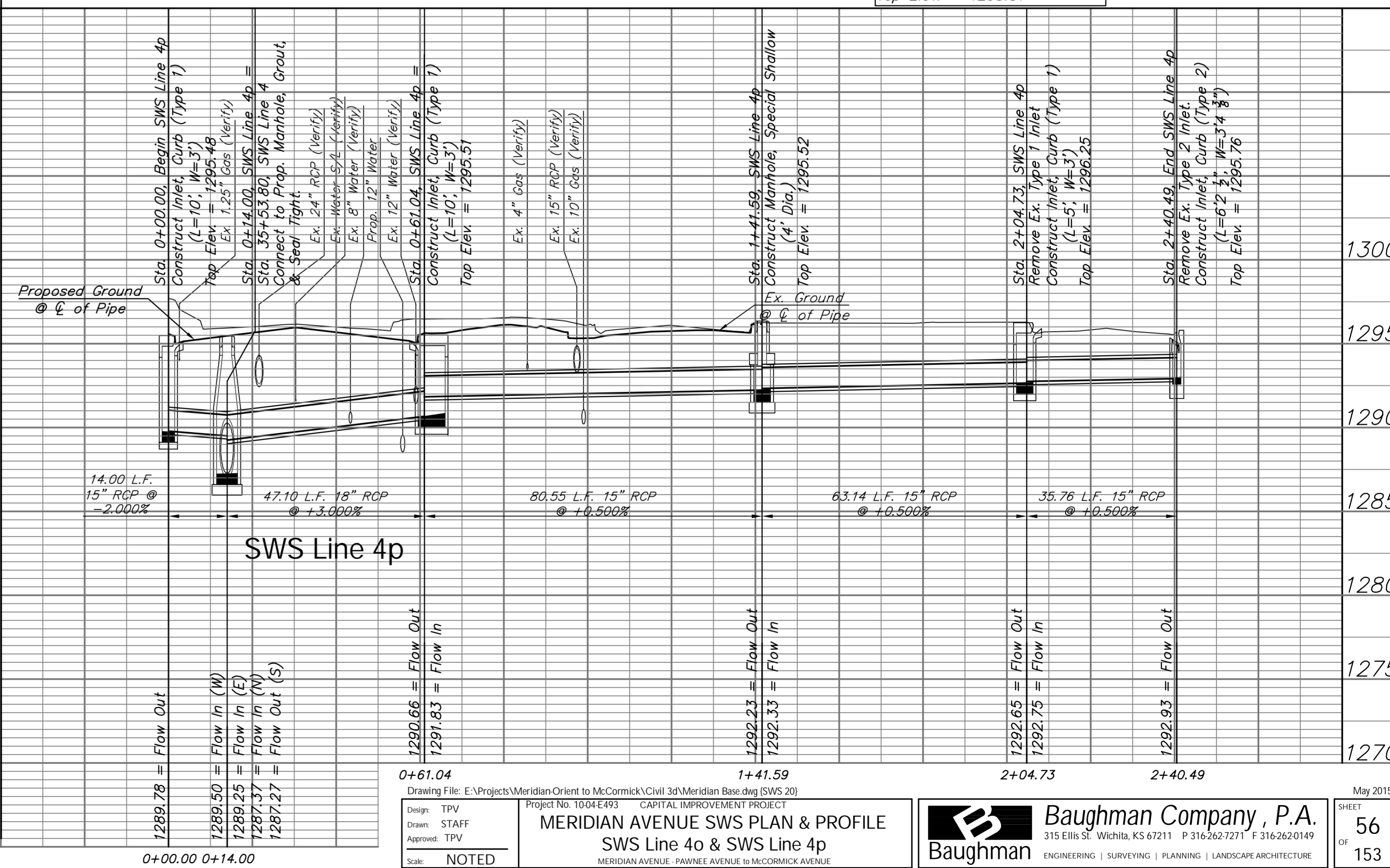
BENCHMARK:
 BM #7 - Chiseled "b" on the Top of Curb on the South Side of Irving Avenue, 100'± East of Centerline of Meridian.
 Elev. = 1295.86 (NAVD 88)



SWS Line 4p



SWS Line 4o



SWS Line 4p