

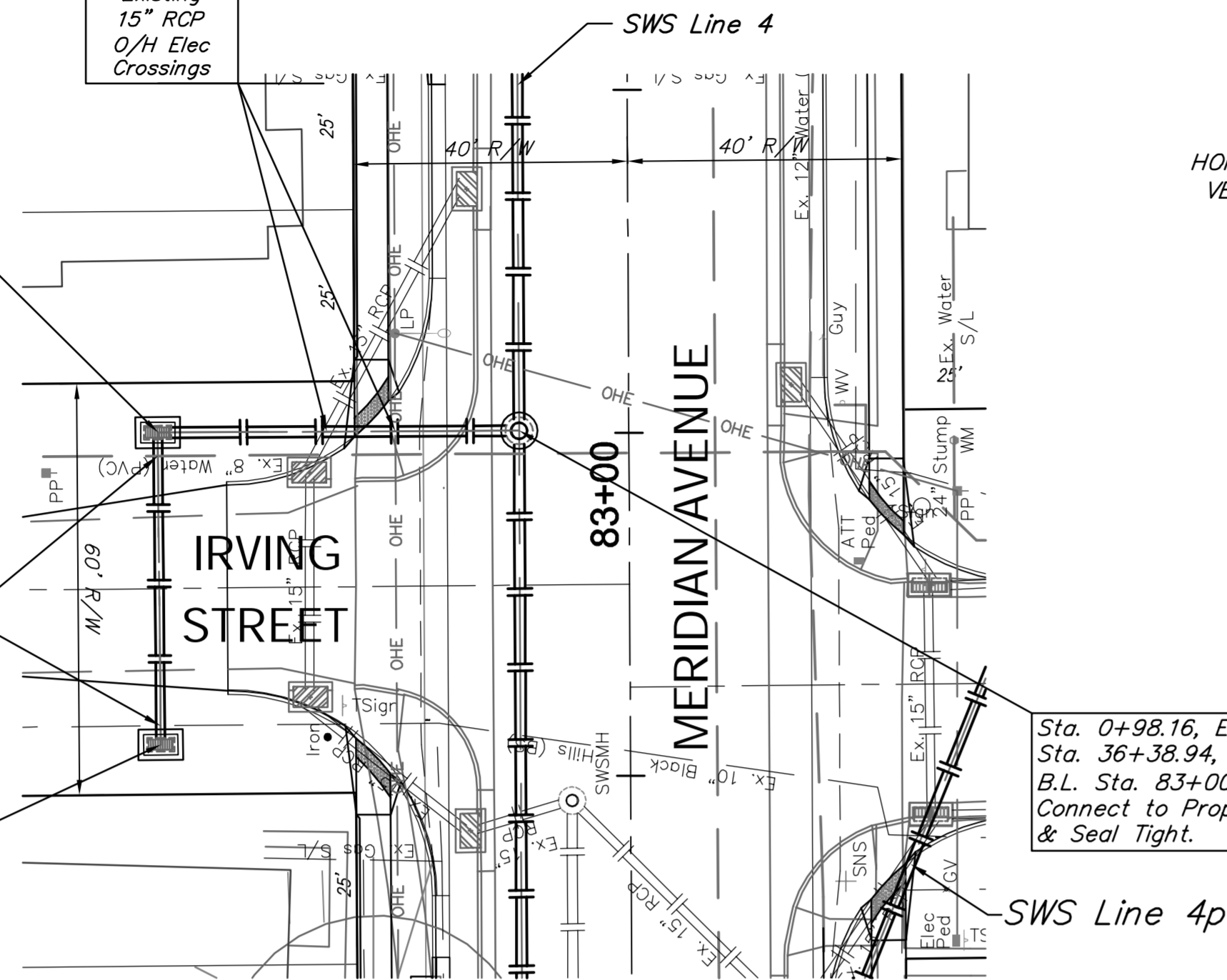
BENCHMARK:
 BM #7 - Chiseled "b" on the Top of Curb on the South Side of Irving Avenue, 100± East of Centerline of Meridian.
 Elev. = 1295.86 (NAVD 88)

Sta. 0+45.50, SWS Line 4q =
 B.L. Sta. 83+00.38, 68.67' Lt.
 Construct Inlet, Drop (Double) w/
 9" Reinforced Concrete Apron.
 Top Elev. = 1295.50

CAUTION!
 Existing 15" RCP
 O/H Elec
 Crossings

CAUTION!
 Existing 10" Gas
 8" Water
 Crossings

Sta. 0+00.00, Begin SWS Line 4q =
 B.L. Sta. 82+54.88, 68.46' Lt.
 Construct Inlet, Drop (Double) w/
 9" Reinforced Concrete Apron.
 Top Elev. = 1295.50



Built per plan

SWS Line 4q

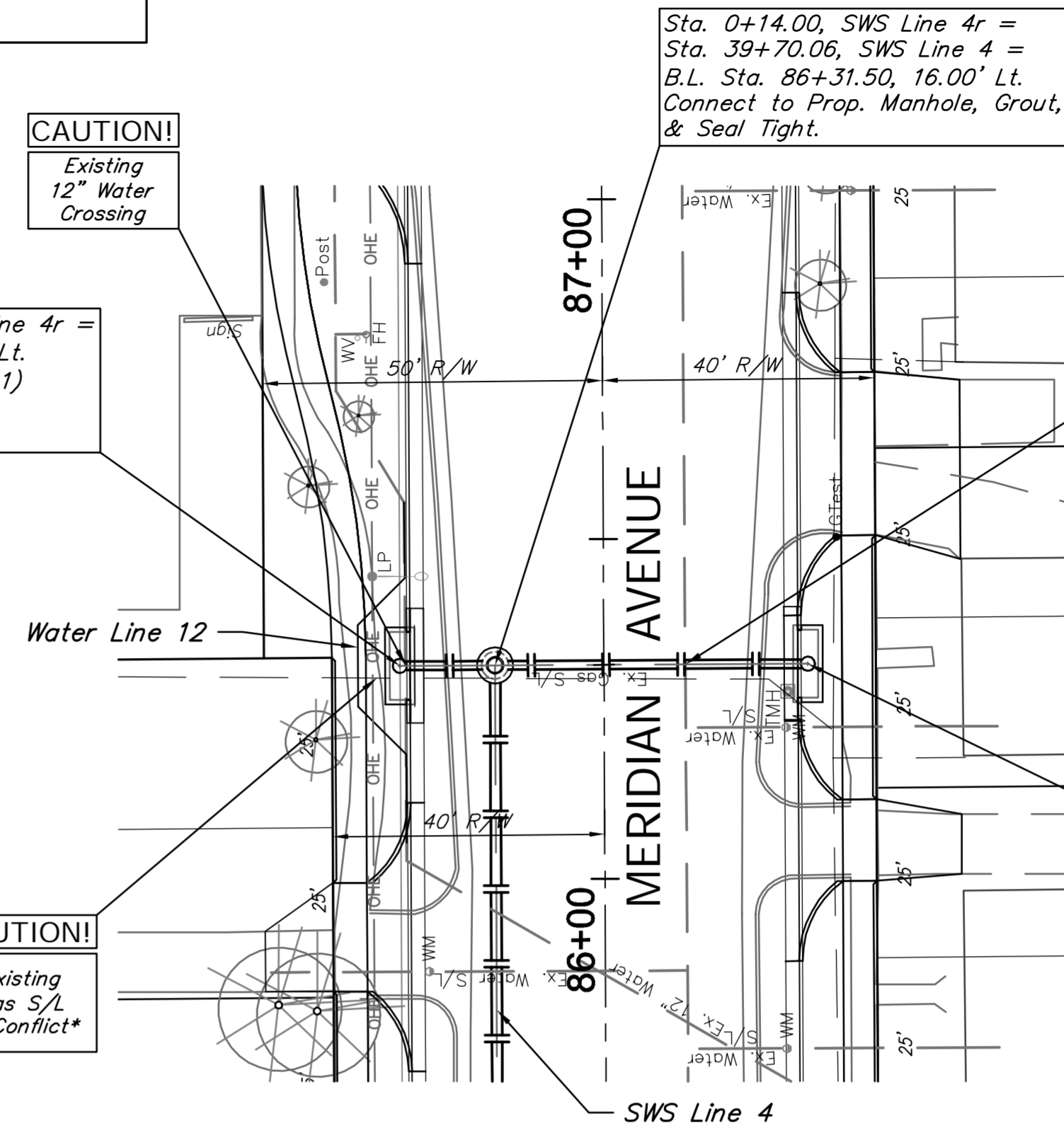
BENCHMARK:
 BM #8 - Chiseled "b" on West Curb Return on the Southwest Corner of Meridian and McCormick
 Elev. = 1297.18 (NAVD 88)

Sta. 0+00.00, Begin SWS Line 4r =
 B.L. Sta. 86+31.50, 30.00' Lt.
 Construct Inlet, Curb (Type 1)
 (L=10', W=3')
 Top Elev. = 1296.29

CAUTION!
 Existing 12" Water
 Crossing

*
 Kansas Gas will relocate the Gas Service Line as necessary during construction. Contact Jim Coe at 831-3121 to schedule relocation.

CAUTION!
 Existing Gas S/L
 in Conflict*



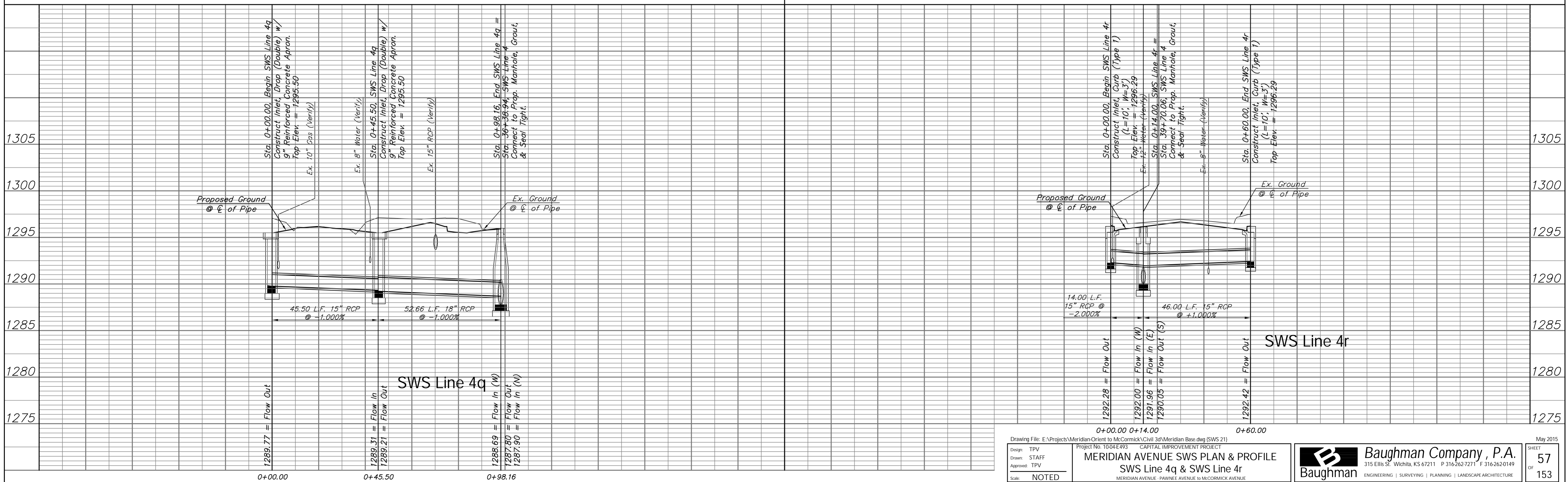
Built per plan

SWS Line 4r

REGION NO.	STATE	PROJECT NO.	FISCAL YEAR	SHEET NO.	TOTAL SHEETS
7	KANSAS	087 N-0593-01	2015	57	153

SCALE:
 HORIZONTAL: 1" = 20'
 VERTICAL: 1" = 5'

Sta. 0+60.00, End SWS Line 4r =
 B.L. Sta. 86+31.50, 30.00' Rt.
 Construct Inlet, Curb (Type 1)
 (L=10', W=3')
 Top Elev. = 1296.29



Drawing File: E:\Projects\Meridian-Orient to McCormick\Civil 3d\Meridian Base.dwg [SWS 21]
 Project No: 1004-E493 CAPITAL IMPROVEMENT PROJECT

Design: TPV
 Drawn: STAFF
 Approved: TPV
 Scale: NOTED

MERIDIAN AVENUE SWS PLAN & PROFILE
 SWS Line 4q & SWS Line 4r
 MERIDIAN AVENUE - PAVINE AVENUE TO MCCORMICK AVENUE

Baughman Company, P.A.
 315 Ellis St., Wichita, KS 67211 P 316.262.7271 F 316.262.0149
 ENGINEERING | SURVEYING | PLANNING | LANDSCAPE ARCHITECTURE

May 2015
 SHEET 57 OF 153