

# STREET PAVING AND INCIDENTAL STORM WATER SEWER IMPROVEMENTS

to serve

## FIREFLY WAY ADDITION PHASE I

27th St. N. from the east line of Lot 11, Block C, west to the west line of Eagle St.; on Eagle St. from the south line of Lot 5, Block D, north and west to the east line of Bracken St.; on Eagle Ct. (Lots 9 through 14, Block E) from the west line of Eagle St., west to and including the cul-de-sac; and Bracken St. from the south line of Lot 19, Block A, east and north to the north line of the plat

### CITY OF WICHITA, KANSAS

Gary Janzen, P.E. City Engineer

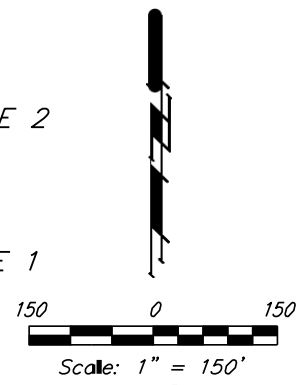
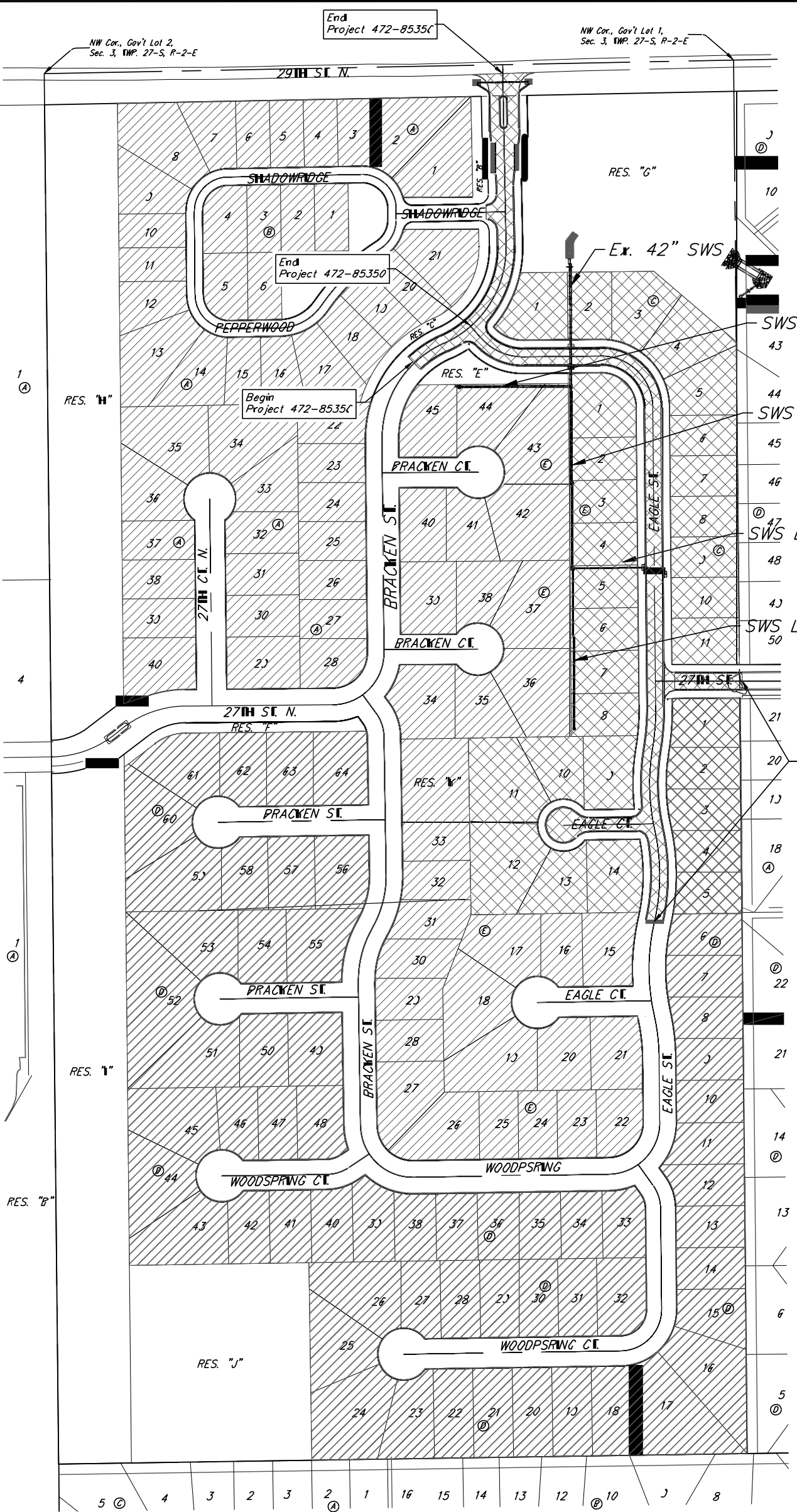
Project Number 472-85350 OCA Number 766381

and

Project Number 472-85356 OCA Number 766382

### GENERAL NOTES:

- Contractor will be required to provide notice to utility companies a minimum of forty-eight (48) hours prior to any excavation, as follows:  
Kansas One-Call 687-2470  
The Contractor must notify the following in case of an emergency:  
Cox Communications 262-4270  
Kansas Gas Service 1-888-482-4950  
Westar Energy 383-8650  
Black Hills Energy 1-800-303-0357  
AET 268-2245  
City of Wichita Water Dept. 268-4563  
City of Wichita Sewer Maint. 268-4024  
City of Wichita Storm Sewer Maint. 268-4090  
City of Wichita Traffic Maint. 268-4034  
Conoco Phillips Pipeline Co. 1-877-267-2290  
Southern Star Pipeline Co. 529-6600  
Kinder-Morgan Pipeline Co. 1-888-844-5658
- Utility service lines, poles, valve boxes, meters, and appurtenances are to be adjusted as necessary by others prior to construction unless the plans specifically call for their adjustment by the Contractor or unless the plans specifically identify a utility to be adjusted by its owner during construction. Existing utilities and their location, as shown on the plans, represent the best information obtainable for design. The Contractor will be required to work around existing utilities within the right-of-way which do not conflict with proposed construction.
- Rubble from the removal of miscellaneous structures and excess excavation which is to be wasted shall be disposed of on sites to be provided by the Contractor. These sites shall be approved by the Engineer as to suitability, appearance and site location. Locations, in the opinion of the Engineer, that will leave an unsightly appearance will not be approved. All disposal sites must be approved by the Kansas Department of Health and Environment. Material either stockpiled or disposed of in a flood plain would require a Kansas State Board of Agriculture permit. Any material dumped in waters of the United States or wetlands is subject to U.S. Corps. of Engineers permitting regulations. Any material buried or stockpiled beyond approved construction limits would require additional archaeological investigations unless buried in a previously approved borrow location.
- Trees and shrubs in public right-of-way which are in direct conflict with proposed new construction shall be removed by the Contractor ONLY with the Developer or Baughman Company approval. Trees and shrubs which are not in direct conflict with proposed new construction shall be saved and protected from damage.
- The Contractor shall give all property owners and/or tenants of developed property abutting the construction of this project a minimum of ten (10) days notice prior to start of construction.
- The Contractor shall be responsible for preserving property irons. The Contractor will be required to re-establish any property irons which are damaged or destroyed by his construction operations. Such irons shall be re-established by a licensed Land Surveyor in accordance with state laws.
- All existing and proposed erosion control measures including silt fencing, erosion control mat, straw bales, inlet barriers, and const. entrance shall be maintained throughout construction by the Contractor and until project is accepted by the City of Wichita. The on-site Engineer shall complete weekly reports on the status of erosion control measures. The Contractor shall be required to comply with maintenance and/or replacement of erosion control measures as determined by the on-site Engineer until project is accepted by City of Wichita. Maintenance and/or replacement of erosion control measures to be paid by L.S. bid item "Maintain Existing BMP's".
- All excess excavation shall remain on-site and shall be stockpiled or spread at a location determined by the engineer.
- All areas of Reserve "C" and Reserve "E", Firefly Way Addition shall be seeded and mulched as follows:  
SEED - Riviera Bermuda grass at 3 lbs/1000 sq. ft. mixed with Annual Rye at 3 lbs/1000 sq. ft.  
FERTILIZER - 12-24-12 Ration at 350 Lbs./Ac.  
MULCH - 2 Tons of Prairie Hay/ Acre  
No Mulch needed where erosion control mat specified  
Areas disturbed by construction within 20th St. N. shall be seeded as follows:  
SEED - Kansas Premium Fescue Blend 350#/Acre & Annual Rye 75#/Acre.  
FERTILIZER - 12-24-12 Ration at 350 Lbs./Ac.  
MULCH - 2 Tons of Prairie Hay/ Acre  
No Mulch needed where erosion control mat specified  
Reserve "B" and all areas disturbed during construction shall be seeded as follows (Temporary Seeding):  
SEED - Rye Grass (PLS)- 220 Lbs./Acre  
All seeding operations shall conform to City of Wichita Standard Specifications. All costs associated with seeding shall be included in bid item "Project Seeding".
- The developer for this project is Kevin Muller  
PH# (316) 684-7300.
- Contractor to use 800 CY of stockpiled topsoil on Lots 19-21, Block A for berm construction. If necessary, dirt stockpiled at the south of the Firefly Way Addition is available for berm construction. Contractor to spread topsoil over the top of all constructed berms.

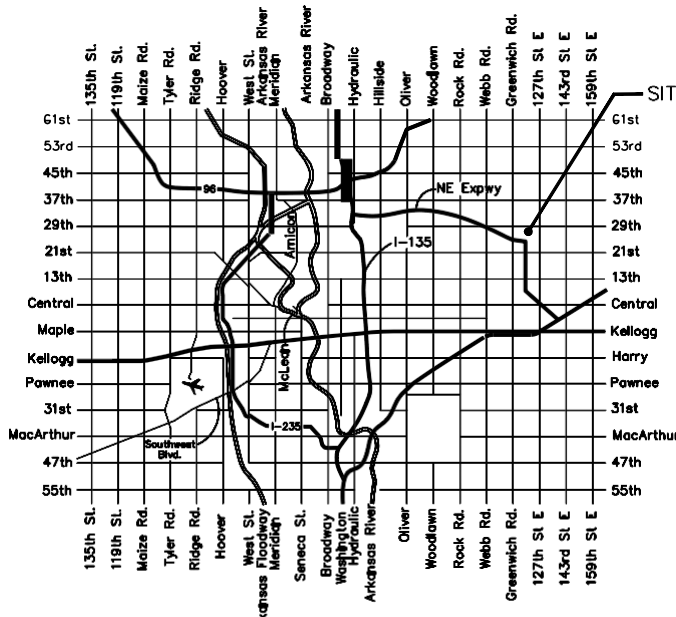


### BENCHMARKS

BM #1: Disc on Top of Curb South Side of 27th St. N. and West of 27th Ct. N. Woods North 3rd Addition Elev. = 1397.69 NAVD88  
BM #2: Northwest 1/4 Corner Government Lot 2, Sec. 3, TWP. 27-S, R-2-E Elev. = 1405.78 NAVD88

### SHEET INDEX

Cover Sheet	1
Asphalt Paving Detail	2
Curb & Gutter Detail	3
Valley Gutter Details	4
Sign Details	5
Pavement Underdrain Details	6
27th St. N.	7
Eagle St.	8-11
Eagle Ct.	12
Bracken St.	13-14
SWS Line 1	15-16
SWS Line 2	17
SWS Line 3	18
Erosion Control Plan	19
Erosion Control BMP Details	20-24
Std. Type 1A Curb Inlet Detail	25
Backyard Inlet Detail	26
Single/Double Drop Inlet Detail	27
Frame and Cover Details	28
Cross Sections	29-35
Coordinate Sheet	36
Copy of Plat	37-38



Project Earthwork Totals (CY unadjusted)			
	Excavation	Compacted Fill	Loose Fill
Street (R/W)	1,384	95	1,186
Reserve Berms	1,800	0	1,800
<b>Project Total</b>	<b>3,768</b>	<b>95</b>	<b>2,986</b>

Total Project Length  
2,572 L.F. = 0.49 Miles

Proj. No. 472-85356 and Proj. 472-85350 Benefit District

Proj. No. 472-85356 Benefit District

### Vicinity Map

**Baughman**  
Baughman Company, P.A. 315 Ellis St. Wichita, KS 67211 P 316-262-7271 F 316-262-0149  
ENGINEERING | SURVEYING | PLANNING | LANDSCAPE ARCHITECTURE

