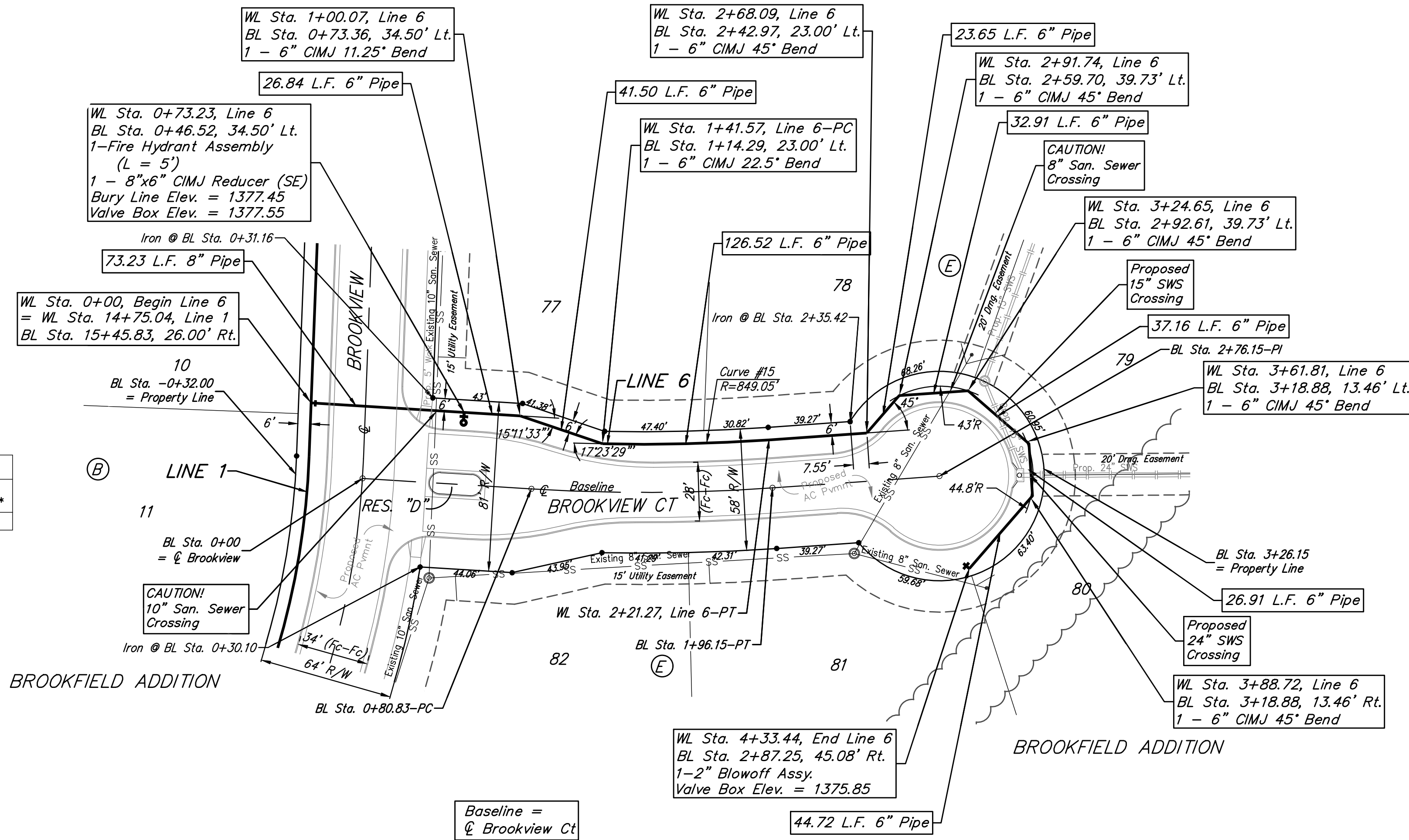


**BENCHMARKS:**  
 RR spike in asphalt, SW COR., N1/2, SW1/4, Sec. 34, TWP. 26-S, R-2-E. Elev. = 1400.59 NAVD88

RR spike in E. face of power pole, 174± N. of S. line, N1/2, SW1/4 & 49± E. of W. line, SW1/4, Sec. 34, TWP. 26-S, R-2-E. Elev. = 1398.64 NAVD88

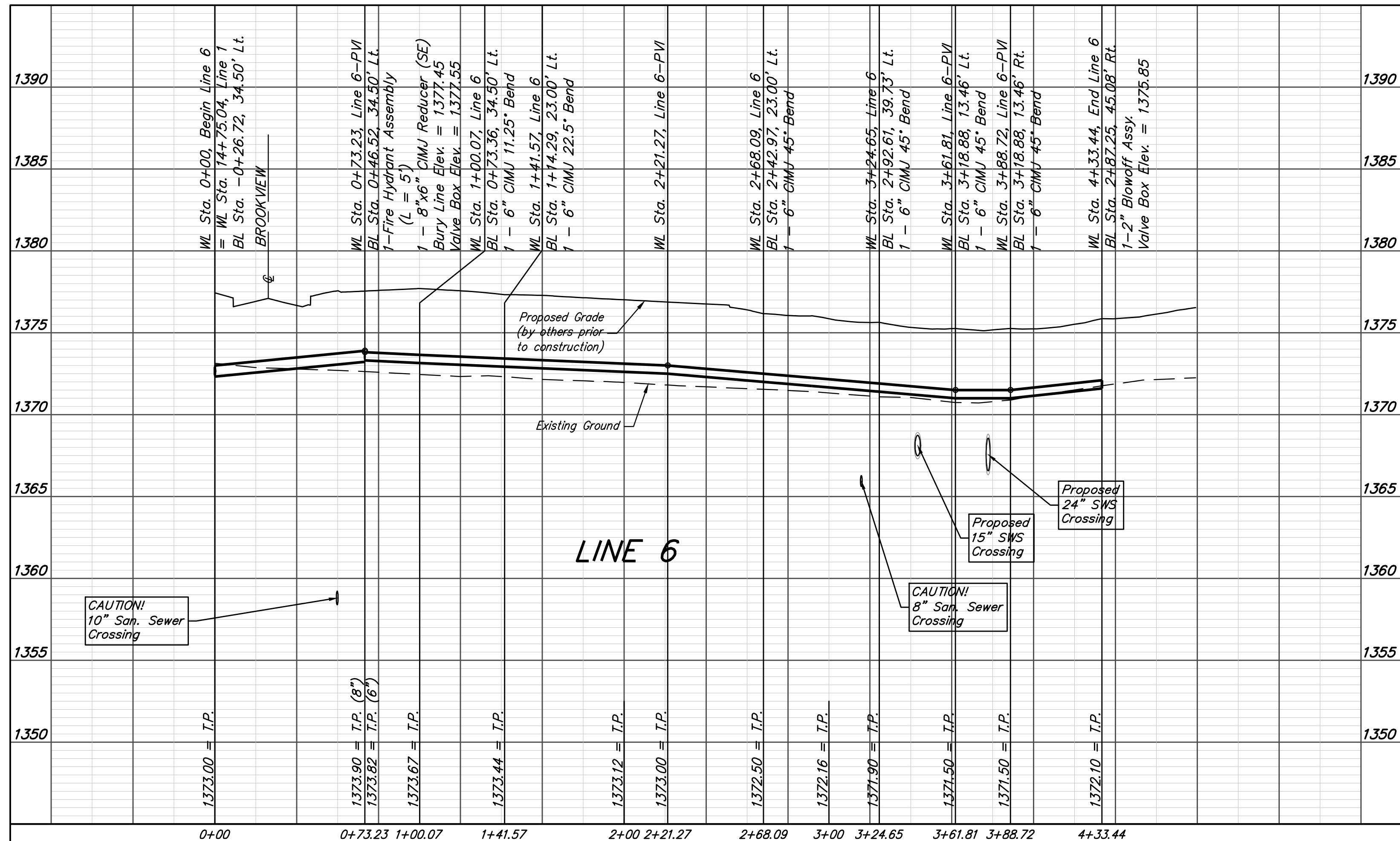
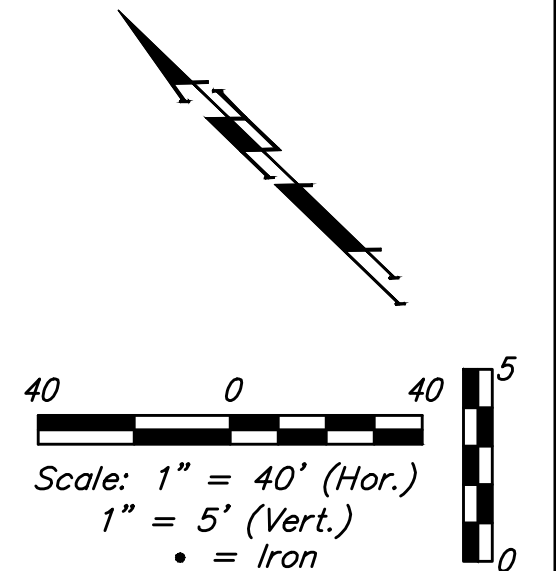
RR spike in S. face of power pole, 294± S. of N. line, SW1/4, & 48± E. of W. line, SW1/4, Sec. 34, TWP. 26-S, R-2-E. Elev. = 1386.14 NAVD88

FIRE HYDRANTS REQUIRED				
STATION	BURY LINE ELEVATION	TOP OF PIPE ELEVATION	FIRE HYDRANT BURY REQUIRED*	VALVE STEM EXT. REQUIRED (ft)*
0+73.23	1377.75	1373.90	4.5	-



Curve #15  
 Curve Data Based on Centerline of Pipe  
 Rad. = 849.05' Delta = 5°22'42" Tangent = 39.88'  
 Arc = 106.70' L.C. = 79.67' Def./Ft. = 1.51218 Min.

Station	Arc	Chord 8' Left	Defl.	Total Defl.
1+14.57	-	-	0°00'00"	0°00'00"
1+25.00	10.43'	7.72'	0°15'46"	0°15'46"
1+50.00	25.00'	18.50'	0°37'49"	0°53'35"
1+75.00	25.00'	18.50'	0°37'49"	1°31'23"
2+00.00	25.00'	18.50'	0°37'49"	2°09'11"
2+21.27	21.27'	15.74'	0°32'10"	2°41'21"



**Baughman** Brookfield Addition - Phase I  
**LINE 6**  
 Water Distribution System

Baughman Company, P.A. 315 Ellis St. Wichita, KS 67211 P 316-262-7271 F 316-262-0149  
 ENGINEERING | SURVEYING | PLANNING | LANDSCAPE ARCHITECTURE

PROJECT NUMBER: 448-90787 DESIGN: AEG DRAWN: JAK  
 APPROVED: DATE: 6/30/17

REVISIONS:

SCALE: Noted  
 SHEET: **10 OF 21**

E:\Projects\Brookfield Addition\_1604190\Engineering\Phase I\WTR\_1608-E541\WTR PLANS.dwg