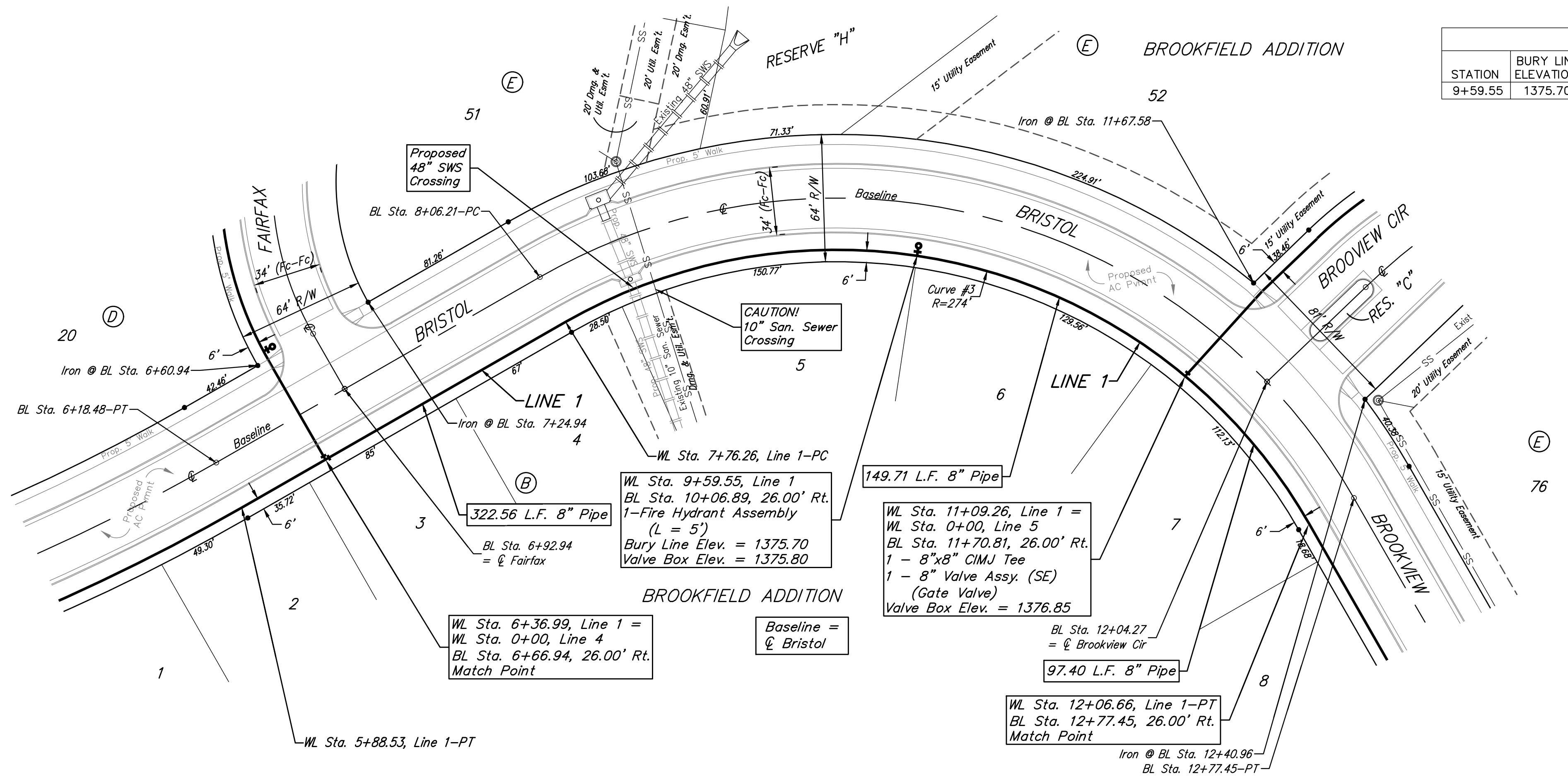
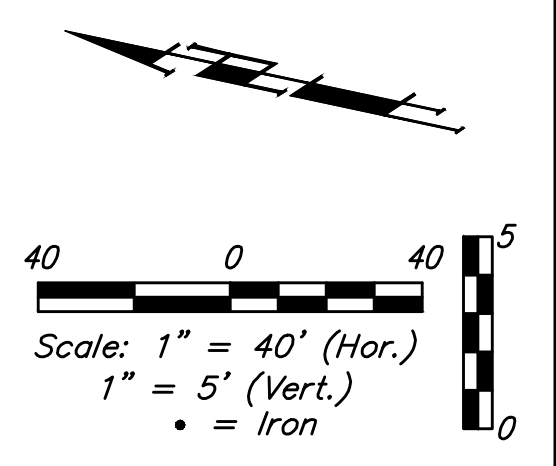


**BENCHMARKS:**  
 RR spike in asphalt, SW COR., N1/2, SW1/4, Sec. 34, TWP. 26-S, R-2-E. Elev. = 1400.59 NAVD88  
 RR spike in E. face of power pole, 174± N. of S. line, N1/2, SW1/4 & 49± E. of W. line, SW1/4, Sec. 34, TWP. 26-S, R-2-E. Elev. = 1398.64 NAVD88  
 RR spike in S. face of power pole, 294± S. of N. line, SW1/4, & 48± E. of W. line, SW1/4, Sec. 34, TWP. 26-S, R-2-E. Elev. = 1386.14 NAVD88

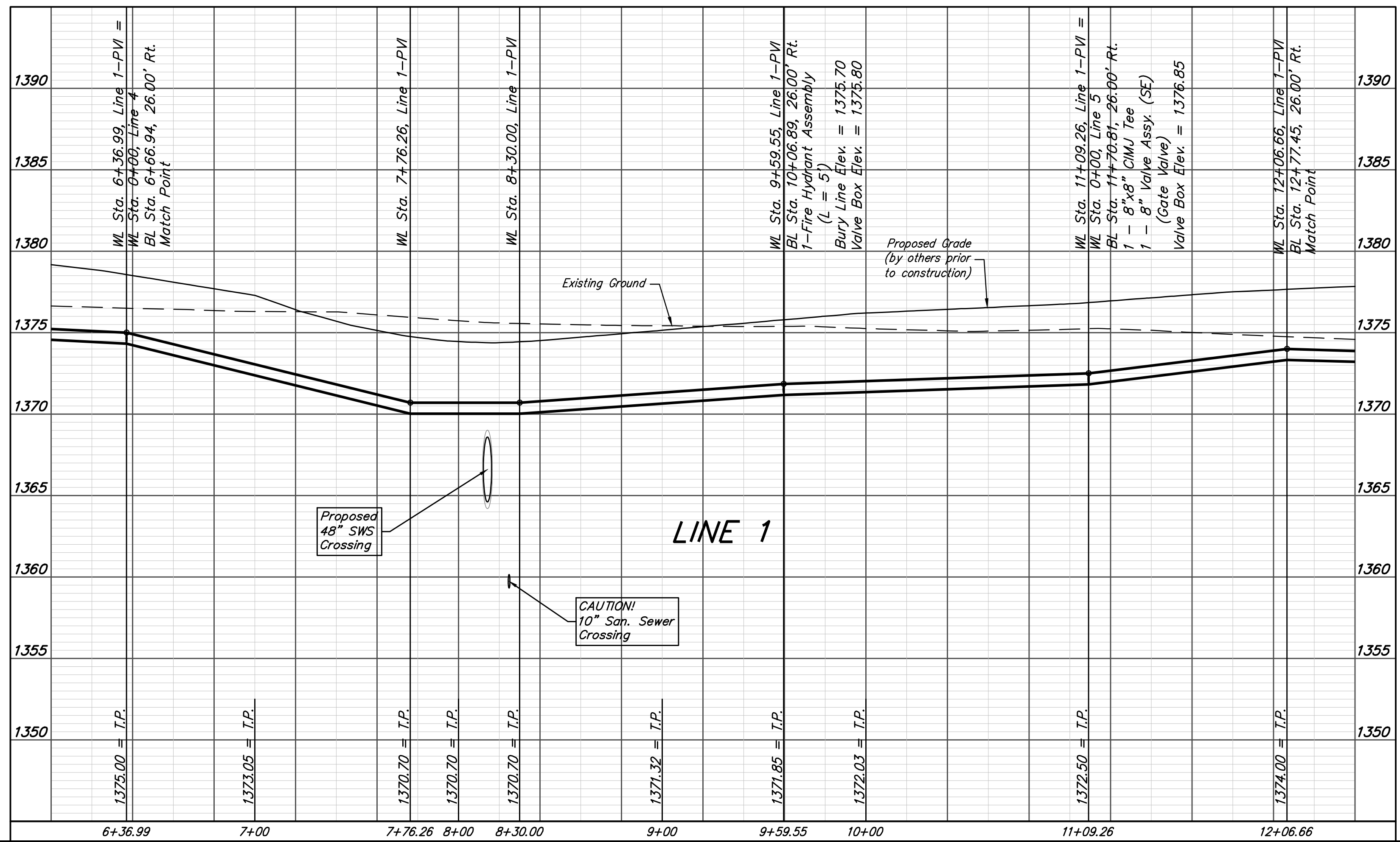


FIRE HYDRANTS REQUIRED				
STATION	BURY LINE ELEVATION	TOP OF PIPE ELEVATION	FIRE HYDRANT BURY REQUIRED*	VALVE STEM EXT. REQUIRED (ft)*
9+59.55	1375.70	1371.85	4.5	-



Curve #3  
 Curve Data Based on Centerline of Pipe  
 Rad. = 274' Delta = 90°00'00" Tangent = 274.00'  
 Arc = 430.40' L.C. = 387.49' Def./Ft. = 6.27323 Min.

Station	Arc	Chord 8' Right	Defl.	Total Defl.
7+76.26	-	-	0'00'00"	0'00'00"
8+00.00	23.74'	23.04'	2'28'56"	2'28'56"
8+25.00	25.00'	24.26'	2'36'49"	5'05'45"
8+50.00	25.00'	24.26'	2'36'50"	7'42'35"
8+75.00	25.00'	24.26'	2'36'50"	10'19'25"
9+00.00	25.00'	24.26'	2'36'50"	12'56'15"
9+25.00	25.00'	24.26'	2'36'50"	15'33'05"
9+50.00	25.00'	24.26'	2'36'50"	18'09'55"
9+59.55	9.55'	9.27'	0'59'54"	19'09'49"
9+75.00	15.45'	15.00'	1'36'56"	20'46'45"
10+00.00	25.00'	24.26'	2'36'49"	23'23'34"
10+25.00	25.00'	24.26'	2'36'50"	26'00'24"
10+50.00	25.00'	24.26'	2'36'50"	28'37'14"
10+75.00	25.00'	24.26'	2'36'50"	31'14'04"
11+00.00	25.00'	24.26'	2'36'50"	33'50'54"
11+09.26	9.26'	8.99'	0'58'05"	34'48'59"
11+25.00	15.74'	15.28'	1'38'45"	36'27'44"
11+50.00	25.00'	24.26'	2'36'50"	39'04'34"
11+75.00	25.00'	24.26'	2'36'49"	41'41'23"
12+00.00	25.00'	24.26'	2'36'50"	44'18'13"
12+06.66	6.66'	6.47'	0'41'47"	45'00'00"



**Baughman** Brookfield Addition - Phase I  
**LINE 1**  
 Water Distribution System

Baughman Company, P.A. 315 Ellis St. Wichita, KS 67211 P 316-262-7271 F 316-262-0149  
 ENGINEERING | SURVEYING | PLANNING | LANDSCAPE ARCHITECTURE

PROJECT NUMBER 448-90787	DESIGN AEG	DRAWN JAK
REVISIONS:	APPROVED	DATE 6/30/17
	SCALE Noted	SHEET <b>5 OF 21</b>

E:\Projects\Brookfield Addition\_1604F190\Engineering\Phase I\WTR\_1608E541\WTR PLANS.dwg