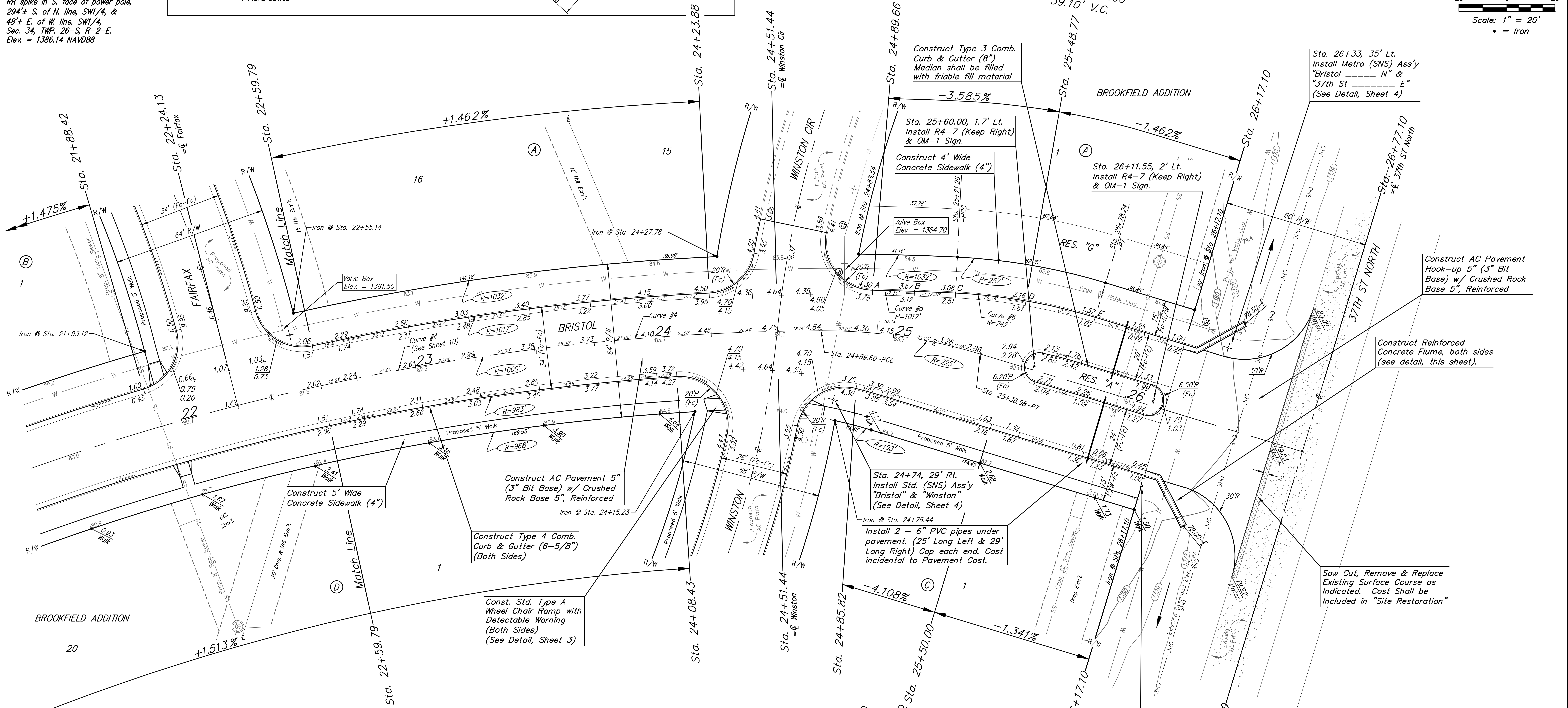
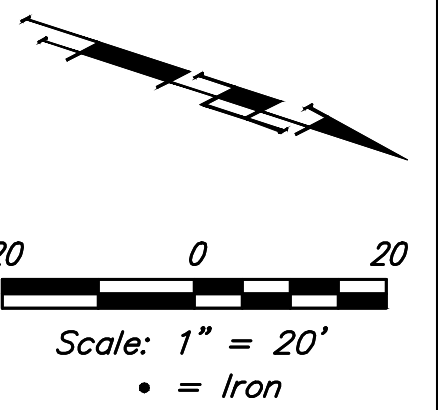
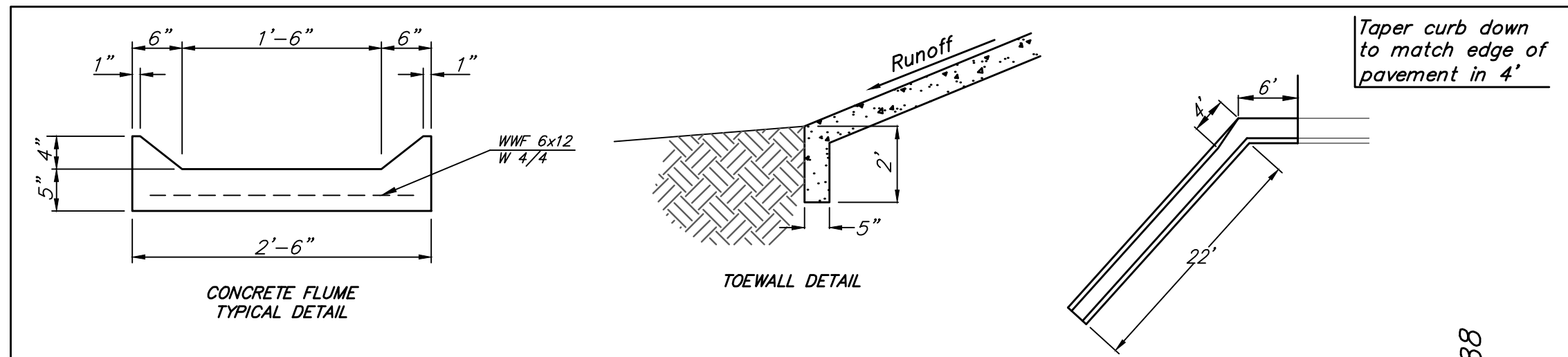


**BENCHMARKS:**  
 RR spike in asphalt, SW COR., N1/2, SW1/4, Sec. 34, TWP. 26-S, R-2-E. Elev. = 1400.59 NAVD88

RR spike in E. face of power pole, 174± N. of S. line, N1/2, SW1/4 & 49± E. of W. line, SW1/4, Sec. 34, TWP. 26-S, R-2-E. Elev. = 1398.64 NAVD88

RR spike in S. face of power pole, 294± S. of N. line, SW1/4, & 48± E. of W. line, SW1/4, Sec. 34, TWP. 26-S, R-2-E. Elev. = 1386.14 NAVD88



Curve #5  
 Curve Data Based on Face of Curb  
 Rad. = 1017' Delta = 2°45'33" Tangent = 24.49'  
 Arc = 34.60' L.C. = 48.97' Def./Ft. = 2.39234 Min.

Station	Arc	Chord 8' Lt.	Defl.	Total Defl.
A	-	-	0°00'00"	0°00'00"
B	17.30'	24.68'	0°41'23"	0°41'23"
C	17.30'	24.68'	0°41'24"	1°22'47"

Curve #6  
 Curve Data Based on Face of Curb  
 Rad. = 242' Delta = 13°59'25" Tangent = 29.69'  
 Arc = 59.10' L.C. = 58.94' Def./Ft. = 7.10166 Min.

Station	Arc	Chord 8' Lt.	Defl.	Total Defl.
C	-	-	0°00'00"	0°00'00"
D	29.55'	30.50'	3°29'51"	3°29'51"
E	29.55'	30.50'	3°29'51"	6°59'42"

**Baughman** Brookfield Addition - Phase I  
**BRISTOL**  
 Sta. 22+59.79 to Sta 26+17.10

Baughman Company, P.A. 315 Ellis St. Wichita, KS 67211 P 316-262-7271 F 316-262-0149  
 ENGINEERING | SURVEYING | PLANNING | LANDSCAPE ARCHITECTURE

PROJECT NUMBER 472-85344	DESIGN AEG	DRAWN JAK
REVISIONS:	APPROVED	DATE 6/30/17
SCALE Noted		SHEET <b>11 OF 56</b>

E:\Projects\Brookfield Addition\_1604F190\Engineering\Phase I\STR\_1608E54H\STR PLANS.dwg