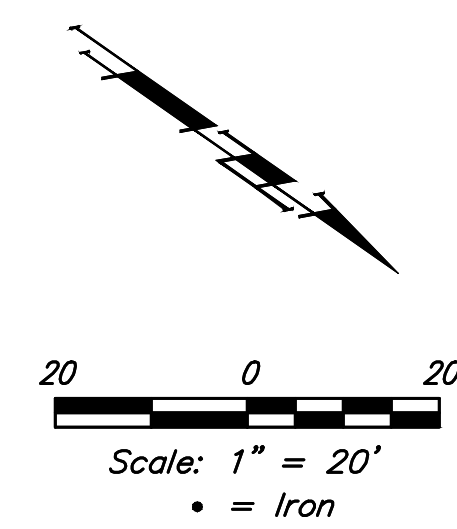


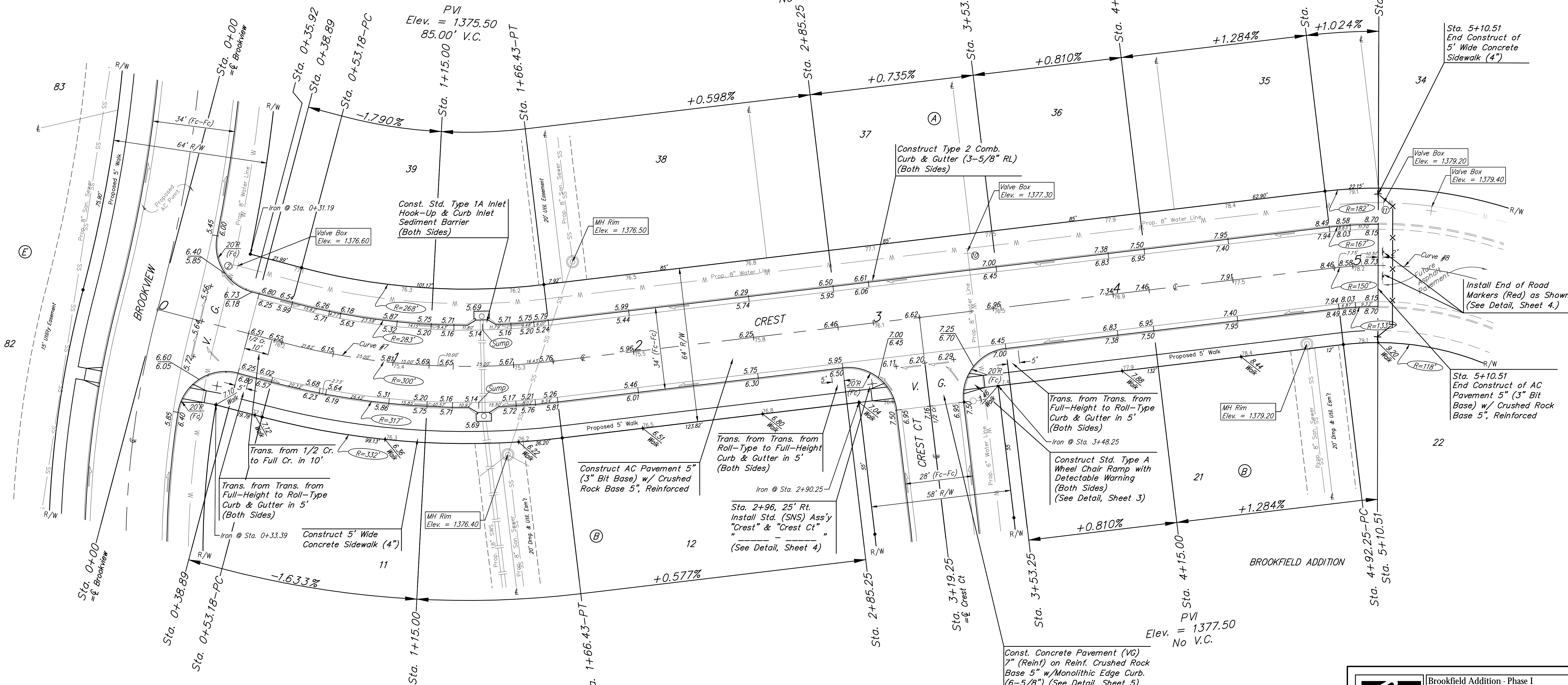
BENCHMARKS:
 RR spike in asphalt, SW COR., N1/2, SW1/4, Sec. 34, TWP. 26-S, R-2-E. Elev. = 1400.59 NAVD88

RR spike in E. face of power pole, 174± N. of S. line, N1/2, SW1/4 & 49± E. of W. line, SW1/4, Sec. 34, TWP. 26-S, R-2-E. Elev. = 1398.64 NAVD88

RR spike in S. face of power pole, 294± S. of N. line, SW1/4, & 48± E. of W. line, SW1/4, Sec. 34, TWP. 26-S, R-2-E. Elev. = 1386.14 NAVD88



BROOKFIELD ADDITION



PVI Elev. = 1375.50
 90.00' V.C.

Curve #7
 Curve Data Based on Centerline
 Rad. = 300' Delta = 21°37'45" Tangent = 57.31'
 Arc = 113.25' L.C. = 112.58' Def./ft. = 5.72958 Min.

Station	Arc	Face Chord Length		Defl.	Total Defl.
		8' Left	8' Right		
0+53.18	-	-	-	0'00'00"	0'00'00"
0+75.00	21.82'	20.00'	23.63'	2'05'01"	2'05'01"
1+00.00	25.00'	22.91'	27.08'	2'23'15"	4'28'16"
1+25.00	25.00'	22.91'	27.08'	2'23'14"	6'51'30"
1+50.00	25.00'	22.91'	27.08'	2'23'14"	9'14'44"
1+66.43	16.43'	15.06'	17.80'	1'34'08"	10'48'52"

Curve #8
 Curve Data Based on Centerline
 Rad. = 150' Delta = 6°58'28" Tangent = 9.14'
 Arc = 18.26' L.C. = 18.25' Def./ft. = 11.45856 Min.

Station	Arc	Face Chord Length		Defl.	Total Defl.
		8' Left	8' Right		
4+92.25	-	-	-	0'00'00"	0'00'00"
5+00.00	7.75'	9.04'	6.46'	1'28'48"	1'28'48"
5+10.51	10.51'	12.26'	8.76'	2'00'26"	3'29'14"

Baughman Brookfield Addition - Phase I
CREST
 Sta. 0+35.92 to Sta. 5+10.51

Baughman Company, P.A. 315 Ellis St. Wichita, KS 67211 P 316-262-7271 F 316-262-0149
 ENGINEERING | SURVEYING | PLANNING | LANDSCAPE ARCHITECTURE

PROJECT NUMBER 472-85344	DESIGN AEG	DRAWN JAK
REVISIONS:	APPROVED	DATE 6/30/17
SCALE Noted		SHEET 12 OF 56

E:\Projects\Brookfield Addition_1604F190\Engineering\Phase I\STR_1608E54H\STR PLANS.dwg