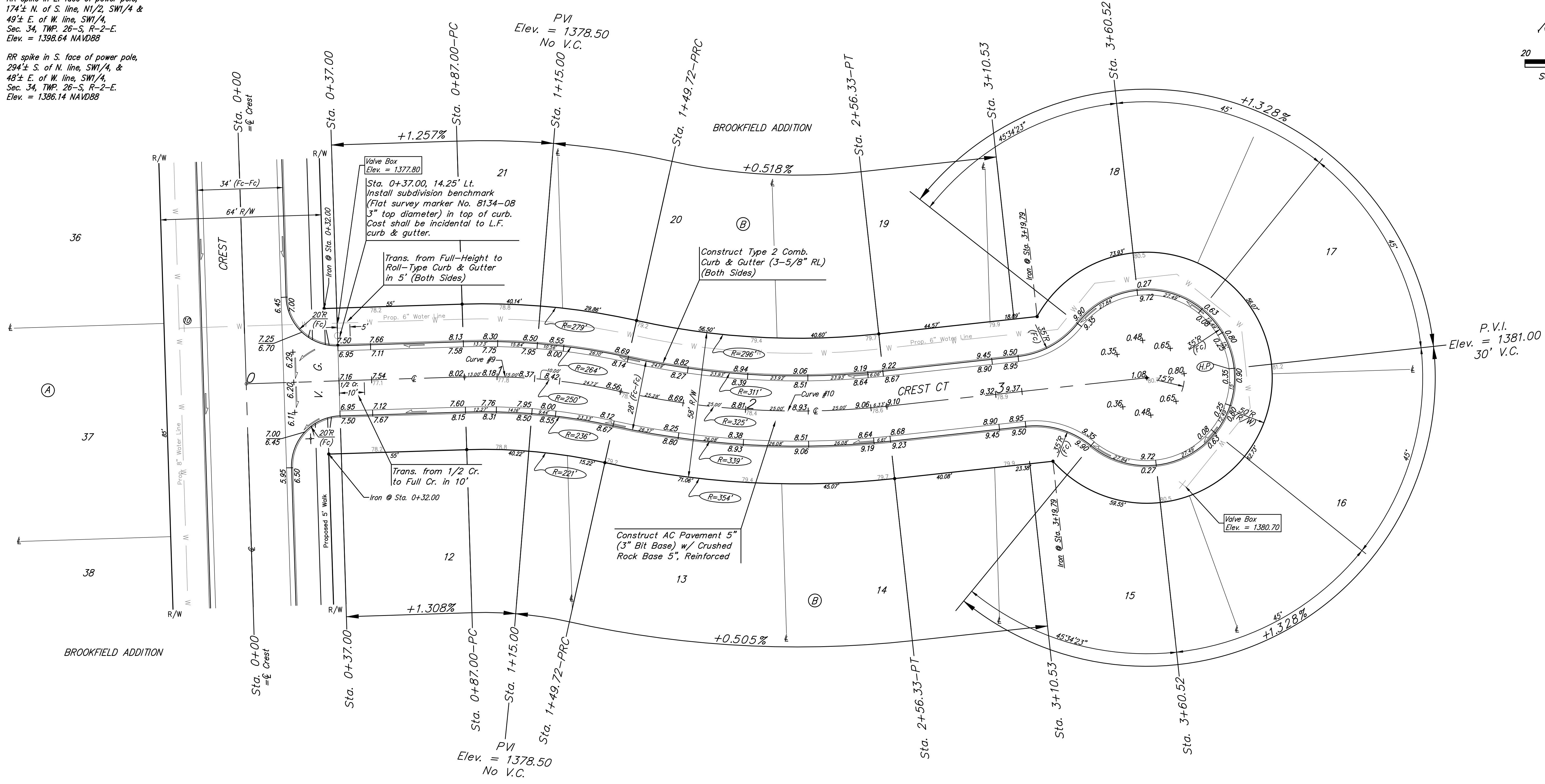
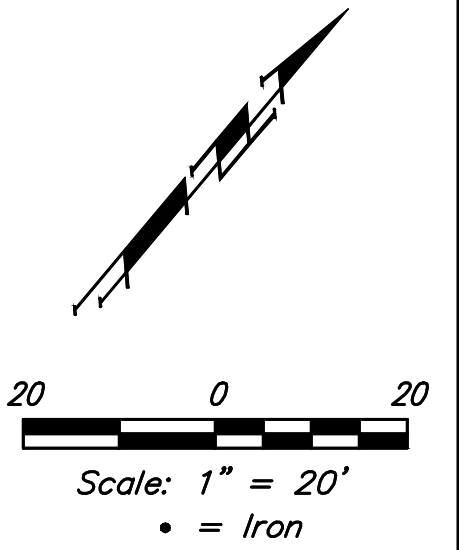


**BENCHMARKS:**  
 RR spike in asphalt, SW COR., N1/2, SW1/4, Sec. 34, TWP. 26-S, R-2-E. Elev. = 1400.59 NAVD88

RR spike in E. face of power pole, 174± N. of S. line, N1/2, SW1/4 & 49± E. of W. line, SW1/4, Sec. 34, TWP. 26-S, R-2-E. Elev. = 1398.64 NAVD88

RR spike in S. face of power pole, 294± S. of N. line, N1/2, SW1/4, & 48± E. of W. line, SW1/4, Sec. 34, TWP. 26-S, R-2-E. Elev. = 1386.14 NAVD88



**Curve #9**  
 Curve Data Based on Centerline  
 Rad. = 250' Delta = 142°27' Tangent = 31.53'  
 Arc = 62.72' L.C. = 62.55' Def./Ft. = 6.87540 Min.

Station	Arc	Face Chord Length		Defl.	Total Defl.
		8' Left	8' Right		
0+87.00	-	-	-	0'00'00"	0'00'00"
1+00.00	13.00'	14.14'	11.85'	1'29'23"	1'29'23"
1+25.00	25.00'	27.19'	22.79'	2'51'53"	4'21'16"
1+49.72	24.72'	26.88'	22.54'	2'49'58"	7'11'14"

**Curve #10**  
 Curve Data Based on Centerline  
 Rad. = 325' Delta = 184°45' Tangent = 53.79'  
 Arc = 106.61' L.C. = 106.14' Def./Ft. = 5.28914 Min.

Station	Arc	Face Chord Length		Defl.	Total Defl.
		8' Left	8' Right		
1+49.72	-	-	-	0'00'00"	0'00'00"
1+50.00	0.28'	0.26'	0.30'	0'01'29"	0'01'29"
1+75.00	25.00'	23.30'	26.69'	2'12'14"	2'13'43"
2+00.00	25.00'	23.30'	26.69'	2'12'14"	4'25'56"
2+25.00	25.00'	23.30'	26.69'	2'12'14"	6'38'10"
2+50.00	25.00'	23.30'	26.69'	2'12'14"	8'50'24"
2+56.33	6.33'	5.90'	6.76'	0'33'29"	9'23'53"

Roll type curb & gutter to be constructed on the pavement on this sheet.  
 Top of curb elevation are given for full height curb.

		Brookfield Addition - Phase I	
		<b>CREST CT</b>	
		Lots 12-21, Block B	
<small>Baughman Company, P.A. 315 Ellis St. Wichita, KS 67211 P 316-262-7271 F 316-262-0149          ENGINEERING   SURVEYING   PLANNING   LANDSCAPE ARCHITECTURE</small>			
PROJECT NUMBER 6/30/17	DESIGN AEG	DRAWN JAK	DATE 6/30/17
REVISIONS:	APPROVED		
	SCALE Noted		
	SHEET <b>13 OF 56</b>		