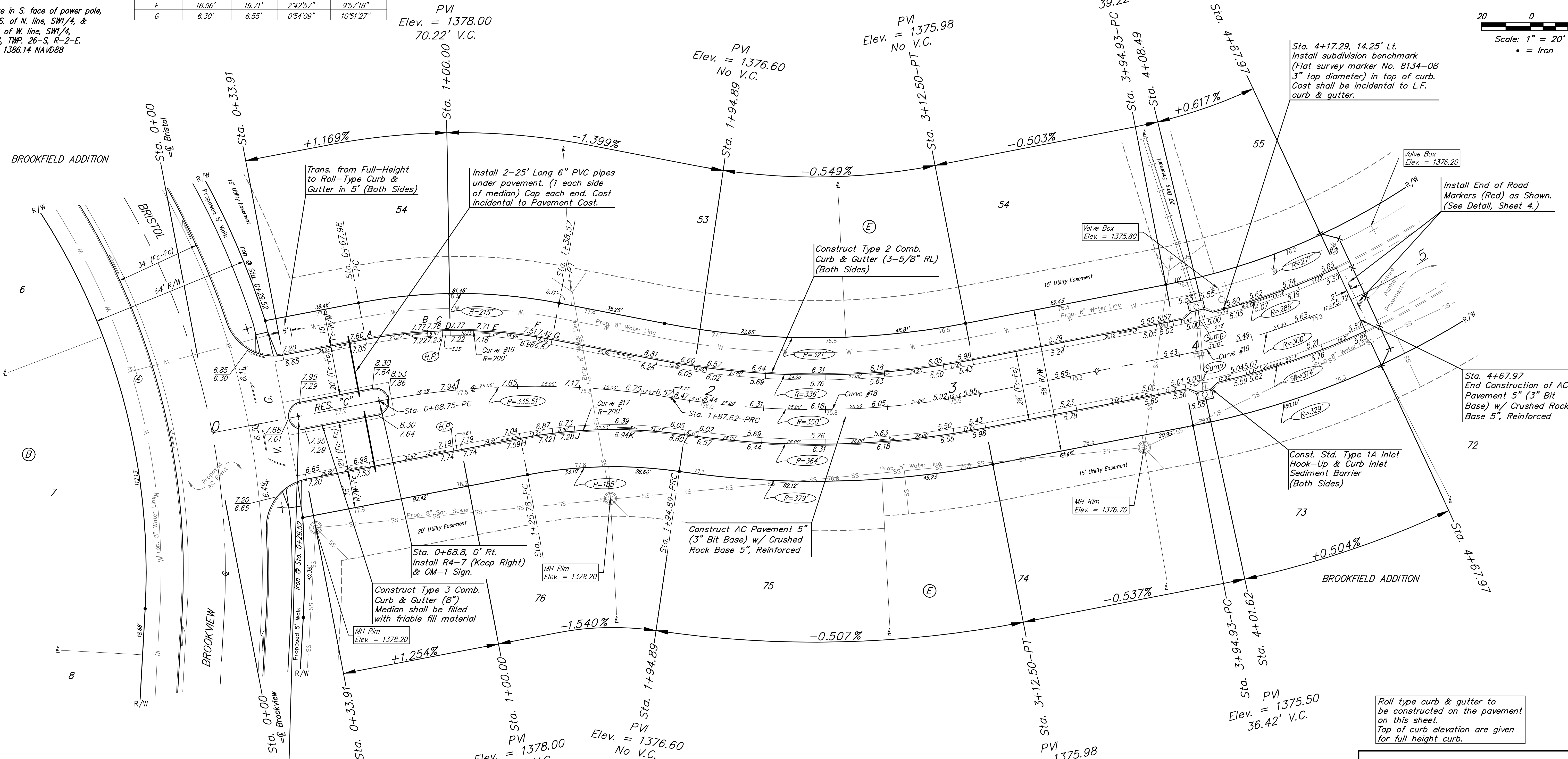
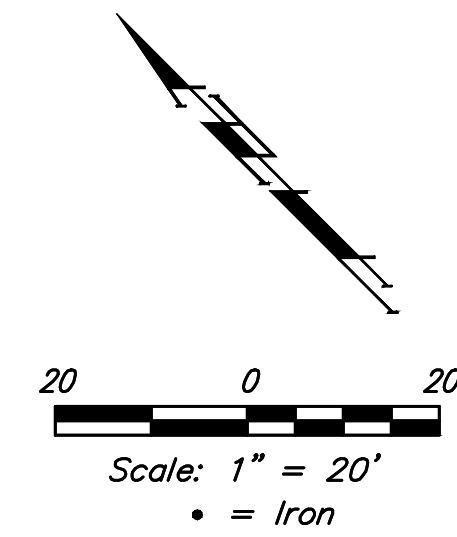


**BENCHMARKS:**  
 RR spike in asphalt, SW COR., N1/2, SW1/4, Sec. 34, TWP. 26-S, R-2-E. Elev. = 1400.59 NAVD88  
 RR spike in E. face of power pole, 174± N. of S. line, N1/2, SW1/4 & 49± E. of W. line, SW1/4, Sec. 34, TWP. 26-S, R-2-E. Elev. = 1398.64 NAVD88  
 RR spike in S. face of power pole, 294± S. of N. line, SW1/4, & 48± E. of W. line, SW1/4, Sec. 34, TWP. 26-S, R-2-E. Elev. = 1386.14 NAVD88

Curve #16  
 Curve Data Based on Face of Curb  
 Rad. = 200' Delta = 21'42"54" Tangent = 38.36'  
 Arc = 75.80' L.C. = 75.35' Def./Ft. = 8.59433 Min.

Station	Arc	Chord 8' Lt.	Defl.	Total Defl.
A	-	-	0'00"00"	0'00"00"
B	25.27'	26.26'	3'37"11"	3'37"11"
C	5.97'	6.21'	0'51"18"	4'28"29"
D	3.15'	3.28'	0'27"05"	4'55"34"
E	16.15'	16.79'	2'18"47"	7'14"21"
F	18.96'	19.71'	2'42"57"	9'57"18"
G	6.30'	6.55'	0'54"09"	10'51"27"



Curve #17  
 Curve Data Based on Face of Curb  
 Rad. = 200' Delta = 19'06"33" Tangent = 33.66'  
 Arc = 67.67' L.C. = 66.39' Def./Ft. = 8.47163 Min.

Station	Arc	Chord 8' Rt.	Defl.	Total Defl.
H	-	-	0'00"00"	0'00"00"
I	13.25'	12.54'	1'52"15"	1'52"15"
J	9.96'	9.42'	1'24"23"	3'16"38"
K	22.23'	21.03'	3'08"19"	6'24"57"
L	22.23'	21.03'	3'08"20"	9'33"17"

Sta. 0+35.5, 0' Rt. Install R4-7 (Keep Right) & OM-1 Sign.

Curve #18  
 Curve Data Based on Centerline  
 Rad. = 350' Delta = 20'26"35" Tangent = 63.11'  
 Arc = 124.88' L.C. = 124.22' Def./Ft. = 4.91105 Min.

Station	Arc	Face Chord Length		Defl.	Total Defl.
		8' Left	8' Right		
1+87.62	-	-	-	0'00"00"	0'00"00"
1+94.89	7.27'	6.81'	7.73'	0'35"42"	0'35"42"
2+00.00	5.11'	4.79'	5.43'	0'25"06"	1'00"48"
2+25.00	25.00'	23.42'	26.57'	2'02"46"	3'03"34"
2+50.00	25.00'	23.42'	26.57'	2'02"47"	5'06"21"
2+75.00	25.00'	23.42'	26.57'	2'02"47"	7'09"08"
3+00.00	25.00'	23.42'	26.57'	2'02"46"	9'11"54"
3+12.50	12.50'	11.71'	13.28'	1'01"24"	10'13"18"

Curve #19  
 Curve Data Based on Centerline  
 Rad. = 300' Delta = 13'56"57" Tangent = 36.70'  
 Arc = 73.04' L.C. = 72.86' Def./Ft. = 5.72939 Min.

Station	Arc	Face Chord Length		Defl.	Total Defl.
		8' Left	8' Right		
3+94.93	-	-	-	0'00"00"	0'00"00"
4+00.00	5.07'	4.70'	5.44'	0'29"03"	0'29"03"
4+25.00	25.00'	23.16'	26.82'	2'23"14"	2'52"17"
4+50.00	25.00'	23.16'	26.82'	2'23"14"	5'15"31"
4+67.97	17.97'	16.65'	19.28'	1'42"58"	6'58"29"

Roll type curb & gutter to be constructed on the pavement on this sheet. Top of curb elevation are given for full height curb.

**Baughman** Brookfield Addition - Phase I  
**BROOKVIEW CIR**  
 Sta. 0+33.91 to Sta. 4+67.97

Baughman Company, P.A. 315 Ellis St. Wichita, KS 67211 P 316-262-7271 F 316-262-0149  
 ENGINEERING | SURVEYING | PLANNING | LANDSCAPE ARCHITECTURE

PROJECT NUMBER: 472-85344  
 DESIGN: AEG  
 DRAWN: JAK  
 APPROVED: [Signature]  
 DATE: 6/30/17

REVISIONS:

SCALE: Noted  
 SHEET: **15 OF 56**

E:\Projects\Brookfield Addition\_1604F190\Engineering\Phase I\STR\_1608E544\STR PLANS.dwg