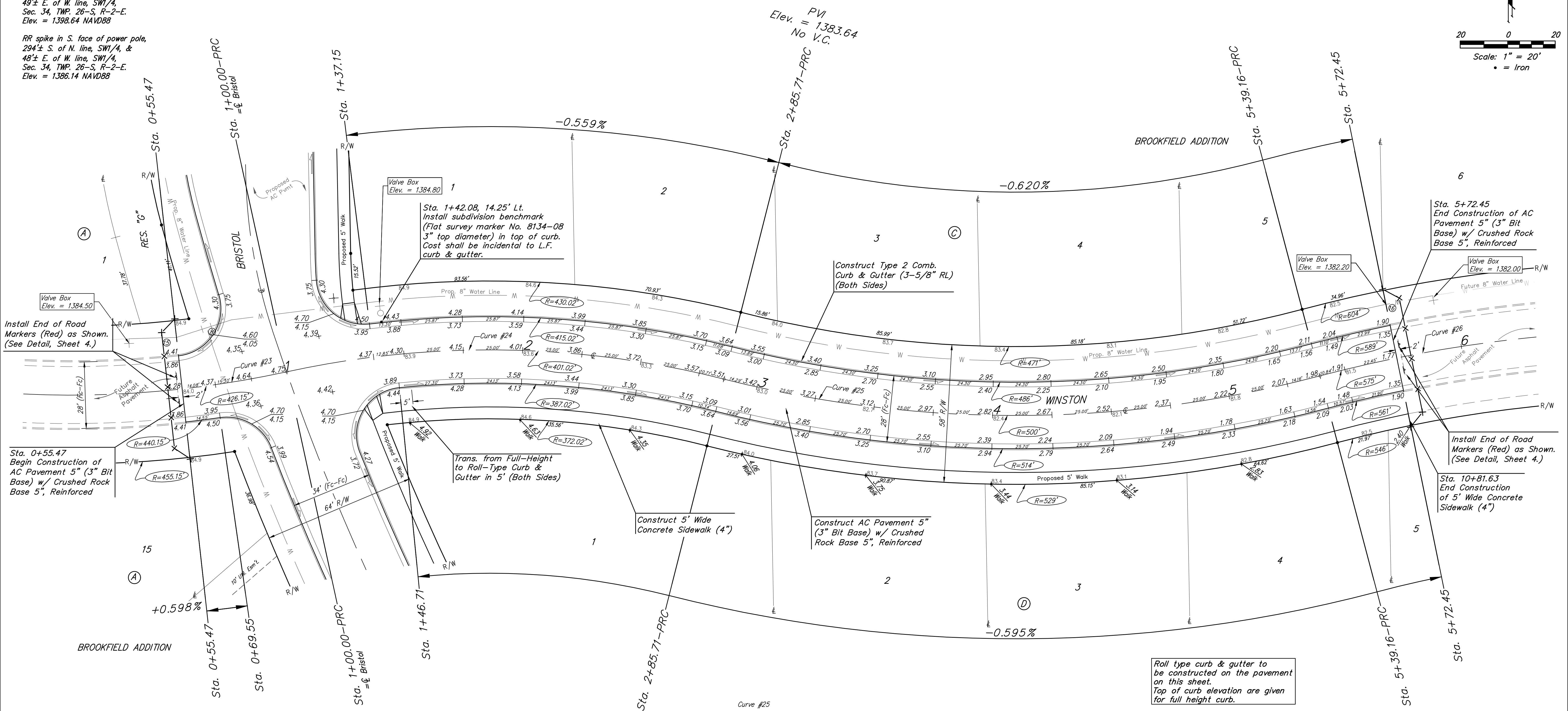
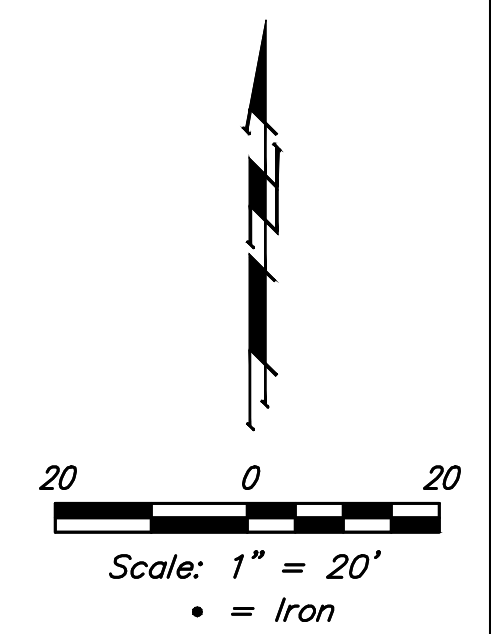


BENCHMARKS:
 RR spike in asphalt, SW COR., N1/2, SW1/4, Sec. 34, TWP. 26-S, R-2-E. Elev. = 1400.59 NAVD88
 RR spike in E. face of power pole, 174± N. of S. line, N1/2, SW1/4 & 49± E. of W. line, SW1/4, Sec. 34, TWP. 26-S, R-2-E. Elev. = 1398.64 NAVD88
 RR spike in S. face of power pole, 294± S. of N. line, N1/2, SW1/4, & 48± E. of W. line, SW1/4, Sec. 34, TWP. 26-S, R-2-E. Elev. = 1386.14 NAVD88



Curve #23
 Curve Data Based on Centerline
 Rad. = 426.15' Delta = 5°59'14" Tangent = 22.29'
 Arc = 44.53' L.C. = 44.51' Def./Ft. = 4.03361 Min.

Station	Arc	Face Chord Length		Defl.	Total Defl.
		8' Left	8' Right		
0+55.47	-	-	-	0'00'00"	0'00'00"
0+69.55	14.08'	13.35'	14.81'	0°56'48"	0°56'48"
0+75.00	5.45'	5.17'	5.73'	0°21'59"	1°18'47"
1+00.00	25.00'	23.71'	26.29'	1°40'50"	2°59'37"

Curve #24
 Curve Data Based on Centerline
 Rad. = 401.02' Delta = 26°32'01" Tangent = 94.55'
 Arc = 185.71' L.C. = 184.06' Def./Ft. = 4.28630 Min.

Station	Arc	Face Chord Length		Defl.	Total Defl.
		8' Left	8' Right		
1+00.00	-	-	-	0'00'00"	0'00'00"
1+37.15	37.15'	39.17'	35.10'	2°39'14"	2°39'14"
1+46.71	9.56'	10.08'	9.04'	0°40'59"	3°20'13"
1+75.00	28.29'	29.84'	26.73'	2°01'15"	5°21'28"
2+00.00	25.00'	26.37'	23.62'	1°47'10"	7°08'38"
2+25.00	25.00'	26.37'	23.62'	1°47'09"	8°55'47"
2+50.00	25.00'	26.37'	23.62'	1°47'10"	10°42'57"
2+75.00	25.00'	26.37'	23.62'	1°47'09"	12°30'06"
2+85.71	10.71'	11.30'	10.12'	0°45'54"	13°16'00"

Curve #25
 Curve Data Based on Centerline
 Rad. = 500' Delta = 29°02'36" Tangent = 129.51'
 Arc = 253.90' L.C. = 250.75' Def./Ft. = 3.43167 Min.

Station	Arc	Face Chord Length		Defl.	Total Defl.
		8' Left	8' Right		
2+85.71	-	-	-	0'00'00"	0'00'00"
3+00.00	14.29'	13.64'	14.89'	0°49'02"	0°49'02"
3+25.00	25.00'	23.86'	26.05'	1°25'48"	2°14'50"
3+50.00	25.00'	23.86'	26.05'	1°25'47"	3°40'37"
3+75.00	25.00'	23.86'	26.05'	1°25'48"	5°06'25"
4+00.00	25.00'	23.86'	26.05'	1°25'47"	6°32'12"
4+25.00	25.00'	23.86'	26.05'	1°25'48"	7°58'00"
4+50.00	25.00'	23.86'	26.05'	1°25'47"	9°23'47"
4+75.00	25.00'	23.86'	26.05'	1°25'48"	10°49'35"
5+00.00	25.00'	23.86'	26.05'	1°25'47"	12°15'22"
5+25.00	25.00'	23.86'	26.05'	1°25'48"	13°41'10"
5+39.61	14.61'	13.94'	15.23'	0°50'08"	14°31'18"

Curve #26
 Curve Data Based on Centerline
 Rad. = 575' Delta = 31°8'59" Tangent = 16.65'
 Arc = 33.29' L.C. = 33.28' Def./Ft. = 2.98864 Min.

Station	Arc	Face Chord Length		Defl.	Total Defl.
		8' Left	8' Right		
5+39.16	-	-	-	0'00'00"	0'00'00"
5+50.00	10.84'	11.25'	10.42'	0°32'24"	0°32'24"
5+72.45	22.45'	23.30'	21.58'	1°07'06"	1°39'30"

Baughman | **Winston**
 Brookfield Addition - Phase I
 Sta. 1+37.15 to Sta. 5+72.45

Baughman Company, P.A. 315 Ellis St. Wichita, KS 67211 P 316-262-7271 F 316-262-0149
 ENGINEERING | SURVEYING | PLANNING | LANDSCAPE ARCHITECTURE

PROJECT NUMBER: 472-85344
 DESIGN: AEG
 DRAWN: JAK
 APPROVED: [Signature]
 DATE: 6/30/17

REVISIONS:

SCALE: Noted
 SHEET: **18 OF 56**

E:\Projects\Brookfield Addition_1604F190\Engineering\Phase I\STR_1608544\STR PLANS.dwg